



TOSHIBA Satellite E45W-C4200X Screen Replacement

How to replace the screen in a Toshiba Satellite Radius 14", model number E45W-C4200X.

Written By: masato tsuchida



INTRODUCTION

This guide will walk you through the necessary steps for replacing the screen in your Toshiba Satellite E45W-C4200X.

Before using this guide, make sure to review the [troubleshooting](#) page to ensure the screen needs to be replaced.

Make sure to power off your laptop completely and disconnect from any external power source prior to beginning the process.



TOOLS:

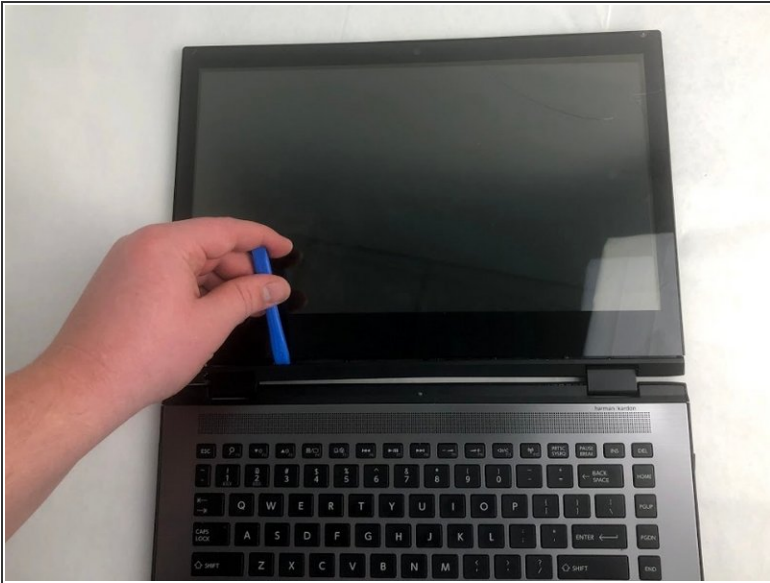
- [iFixit Opening Tools](#) (1)
- [metal Opening Tool](#) (1)
- [Phillips #1 Screwdriver](#) (1)



PARTS:

- [Toshiba Satellite E45W-C4200X LCD Screen](#) (1)

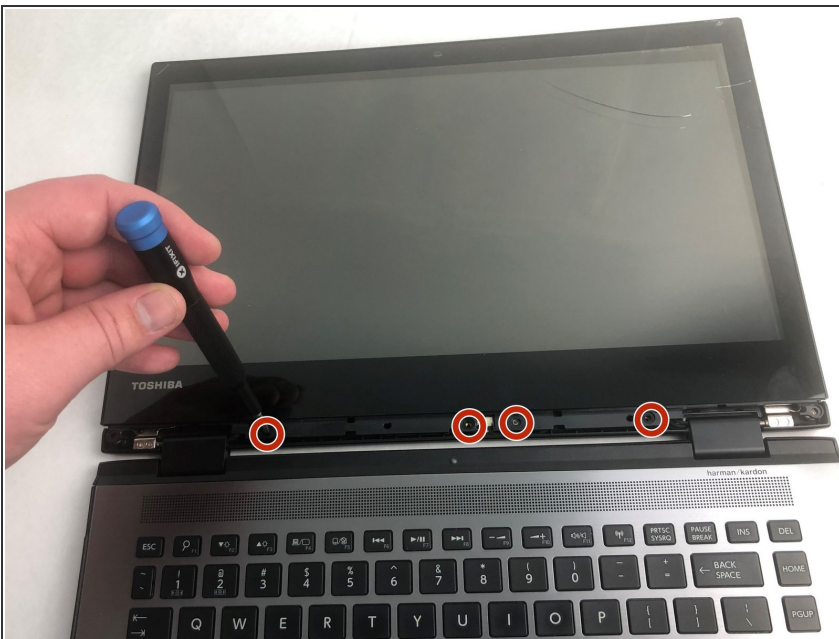
Step 1 — Screen



- Using a plastic opening tool, remove the plastic bar underneath the screen.

⚠ Use caution when removing the plastic bar to prevent cracking.

Step 2



- Use the Phillips #1 screwdriver and remove the four screws at the bottom of the screen.

☑ Be sure to store the screws in a safe place to prevent losing them.

Step 3



- Use the blue plastic opening tool to start separating the plastic cover from the screen.
- Once started, use the Jimmy to run along the edges to complete the separation.

⚠ Be sure to go very slow to avoid cracking the glass further and possibly cutting yourself.

i The camera is still connecting the protective cover to the laptop; we recommend setting it on top of the keyboard.

Step 4



- Remove the remaining screws that hold the screen in place using the Phillips #1 screwdriver.
- Carefully lift out the screen and fold on its face.

⚠ The screen is still attached, do not pull away from the laptop.

Step 5



- Disconnect the screen from the small circuit board.
- ⚠ Gently disconnect with even pressure on both sides to prevent damage.
- The old screen has now been completely removed.

To reassemble your device, follow these instructions in reverse order.