



TP-Link MR3040 Wireless Router Disassembly

This will show you how to disassemble the case to get into the interior of the device.

Written By: steve



INTRODUCTION

Kudos to hackeritalics at <https://www.youtube.com/watch?v=2ya8yov8...> for getting me the gist. What this does is show you the hidden tabs to release in order to open up the case without breaking it.



TOOLS:

- [Phillips #00 Screwdriver](#) (1)
 - [Flathead 3/32" or 2.5 mm Screwdriver](#) (1)
-

Step 1 — TP-Link MR3040 Wireless Router Disassembly



- First, open the case by prying off the bottom the same way you access the battery. Use a thumbnail on this side and the other side

Step 2



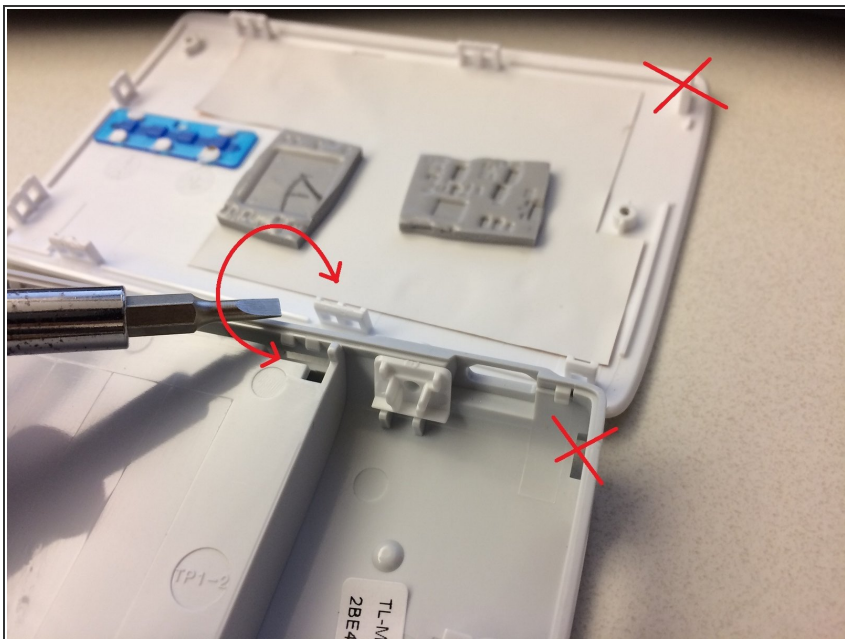
- This is also how you install or remove the battery

Step 3



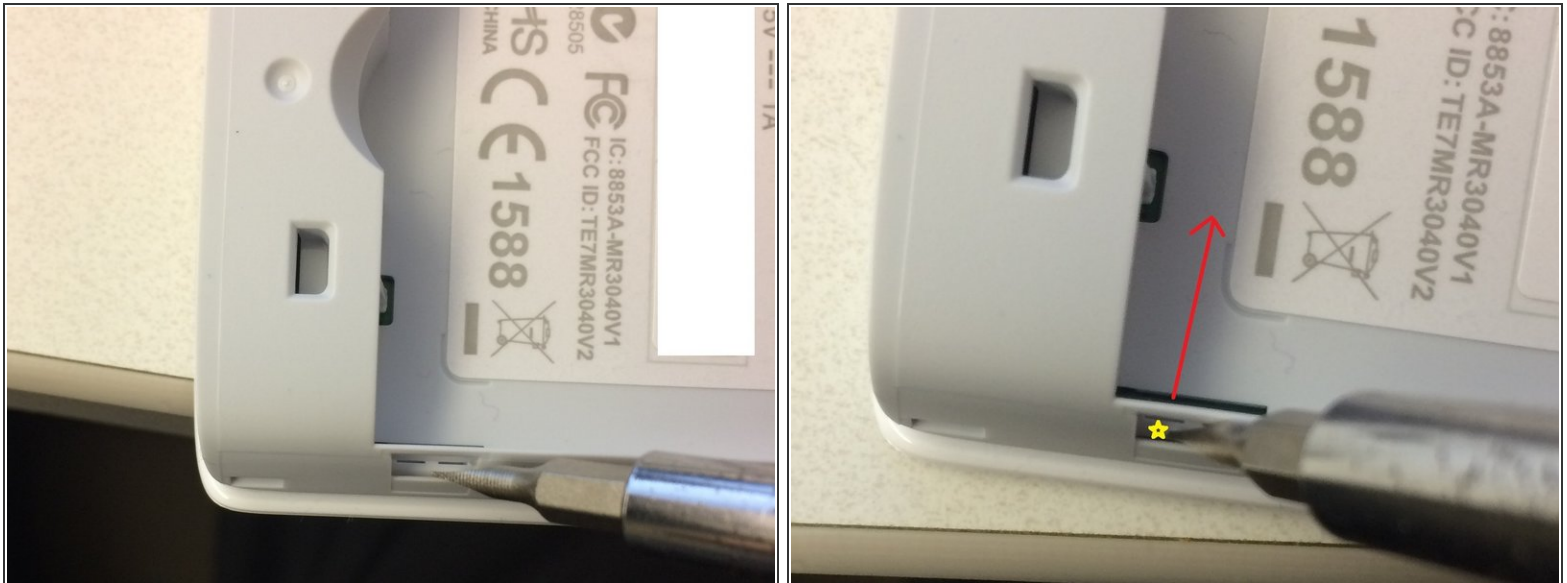
- First, use a small Philips head screwdriver - a 00 worked for me - and remove the two screws indicated by the ORANGE stars.
- The four yellow stars indicate where you will be prying the TABS away

Step 4



- This is what it will look like taken apart. The white plate at the top of the picture is the plate you will be removing. The gray plate is where the circuit board sits. In this picture the circuit board is already removed.
- NOTE that there are also tabs at the ends of the router, I noted one with a red X -- you don't need to worry about those, they slip off once you get the other tabs loose.

Step 5



- The latch is on the white case. The tabs are on the gray case. You will be pushing the white latch AWAY from the gray tabs.
- Put your flat blade to the OUTBOARD side of the white latch in the hole. Push INBOARD to pry it OFF of the tabs, pushing down through the hole at the same time in order to push the white case off. You'll want to hold the router by the gray if you can.
- As you push the latch you'll obviously need to try to pry the two pieces apart like with your fingernail.

To reassemble your device, snap it back together. Bear in mind that if you remove the circuit board you'll need to align the power and other switch with their carriers in the gray case.