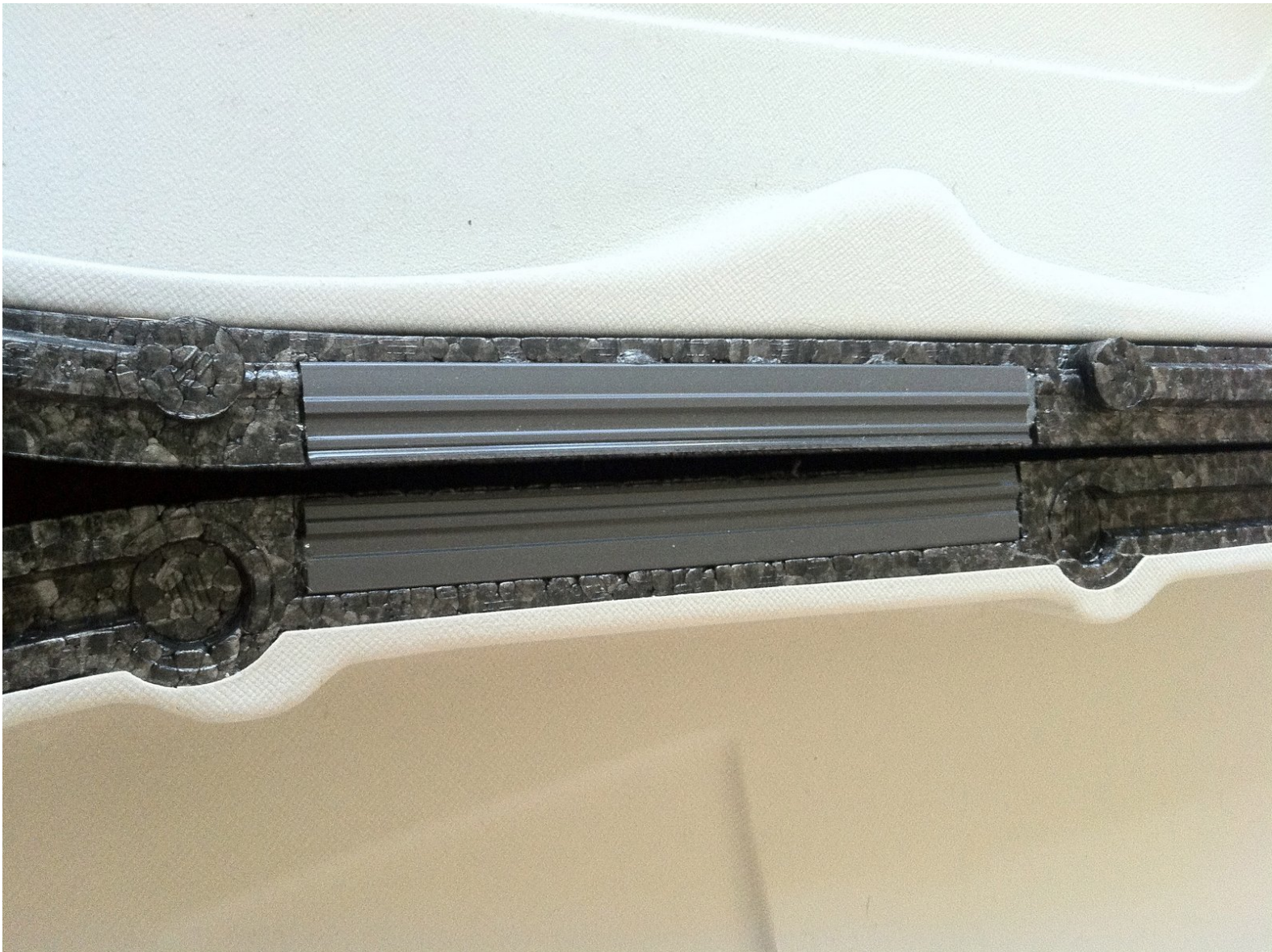




# TRIC Guitar Case Plastic Hinge Replacement

A quick guide showing how to repair/replace a plastic hinge on a TRIC Case guitar case (manufactured by Godin for Simon & Patrick, Godin, Seagull, Norman, Art & Lutherie, LaPatrie guitars).

Written By: Silas



## INTRODUCTION

You will need to order the part, buy some Shoe Goo, and source a blow dryer (hair dryer).



### TOOLS:

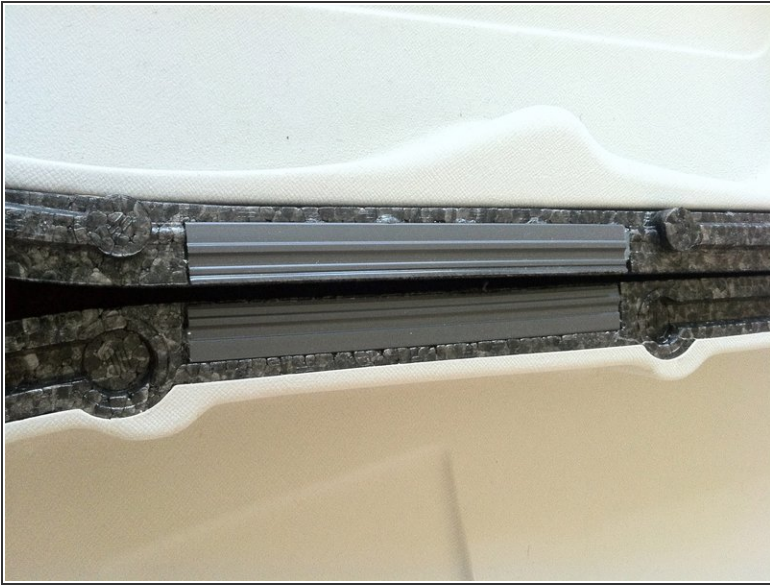
- [Heat Gun](#) (1)
- [Shoe Goo](#) (1)



### PARTS:

- [TRIC Case Hinge](#) (1)

## Step 1 — Plastic Hinge



- Confirm that the hinge is actually broken or split. Indeed, one of my hinges is broken.
- Sometimes a broken hinge can be accompanied by a second broken hinge since the stress of one broken hinge begins to break the second one.



## Step 2



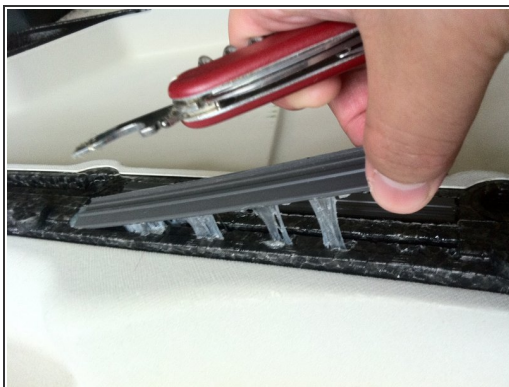
- Order a replacement hinge from your local guitar store, or directly contact Godin for replacement at [info@godinguitars.com](mailto:info@godinguitars.com)
- My supplier/brand was "Godin", the model was "TRIC Case Hinges", and the Color was "GREY".
- Here's what the new hinge looks like next to the old hinge.
- Here's what the new hinge looks like next to a human foot in the distance.

## Step 3



- Using a blow dryer (or heat gun) to warm up the glues holding the old hinge in place.
- This heating process took at least 15 minutes for me with a blow dryer.

## Step 4



- As the glue starts to soften, you can pry the hinge pieces off with a tool like a Swiss Army knife. If it is still stuck on solid, keep blow drying it.

## Step 5



- The hinge piece comes off!  
Fantastic.



## Step 6



- Repeat for the other hinge piece: blow dry, soften the glue, pry off.
- Hinge pieces shown side by side: new hinge on the left, old hinge on the right.

## Step 7



- Use Shoe Goo to fill the cavity where the old hinge was previously. **WARNING:** do not use traditional hot glue gun because it dries up too fast before you even get a chance to put the new hinge on.
- Put the new hinge in the cavities and apply some pressure to make it sink deep into the hinge cavity.



## Step 8



- Fold the guitar case closed and clamp the clips to close it tight. Push the two sides to let excess Shoe Goo ooze out (that sounds so nice!).
- Put a sack of rice or something heavy on the guitar case to let the glue solidify and dry overnight.
- Wipe off any excess Shoe Goo that has oozed out with a paper towel or tissue.

## Step 9



- After the Shoe Goo has dried up, your TRIC case is like new! So great!
- To prevent future cracking, I may apply some sort of strong tape to the inside of the hinge.

Transport your guitar with peace-of-mind.