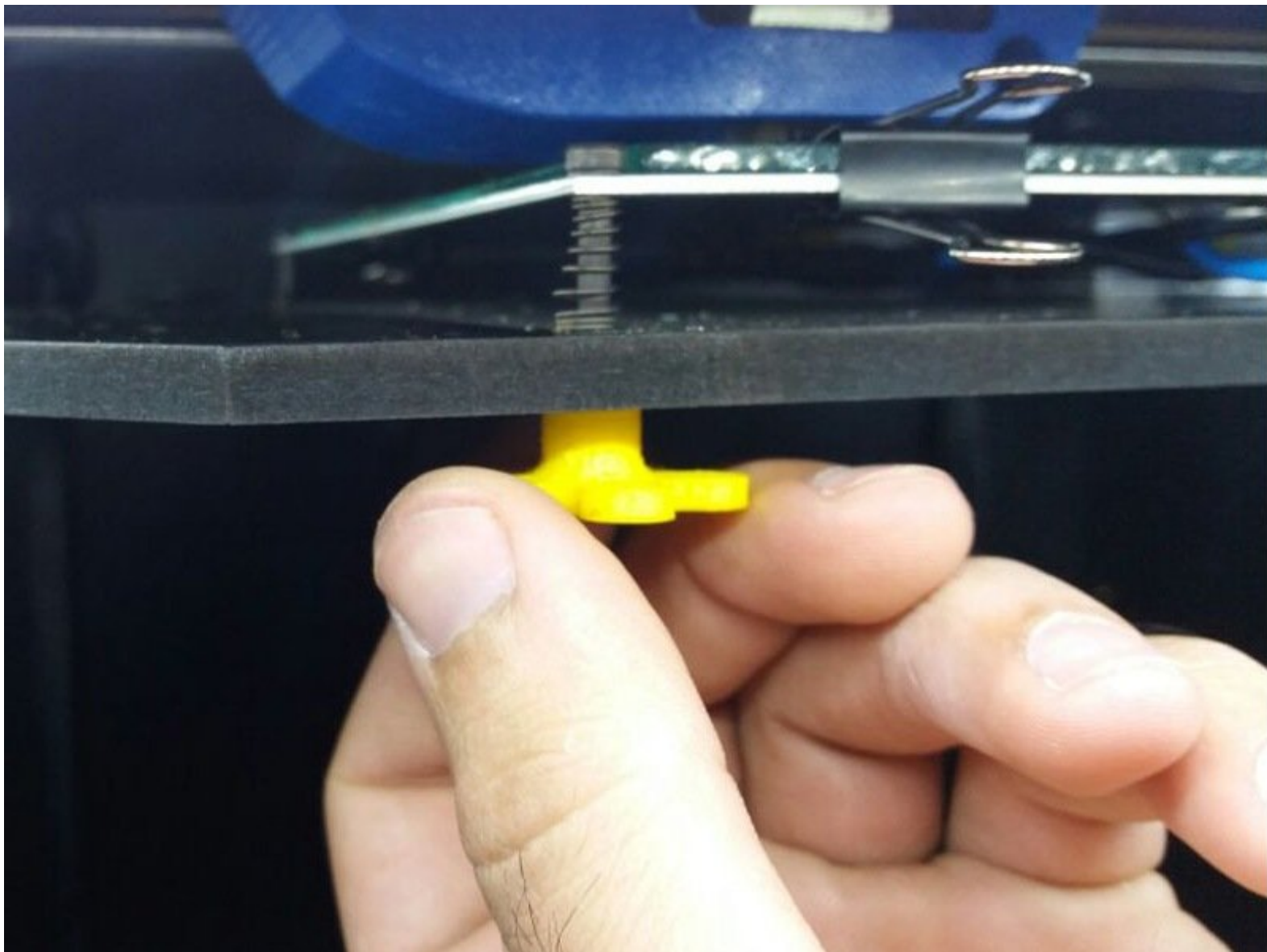


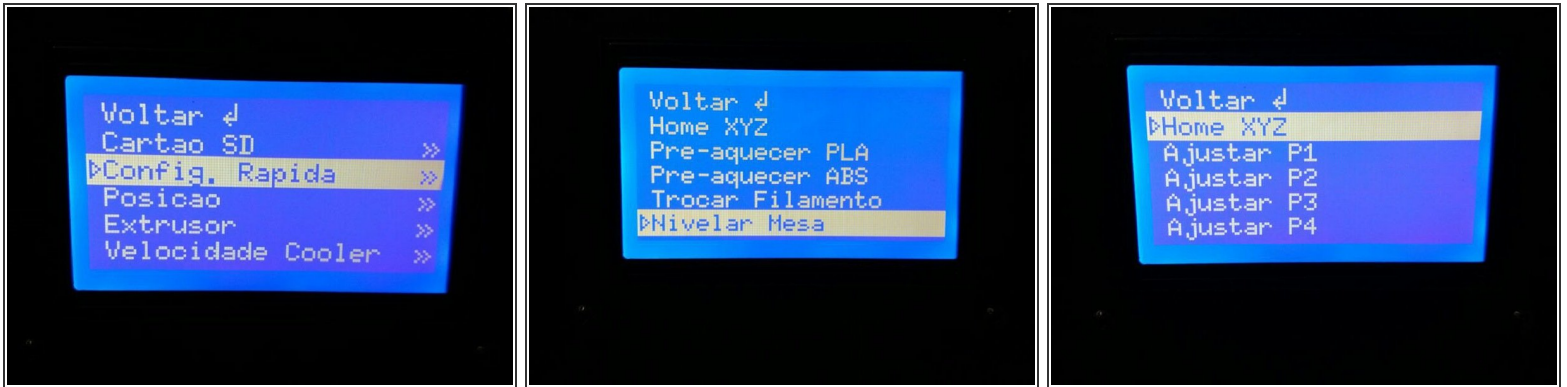


Table setting

Written By: Moustas Impessoras 3D

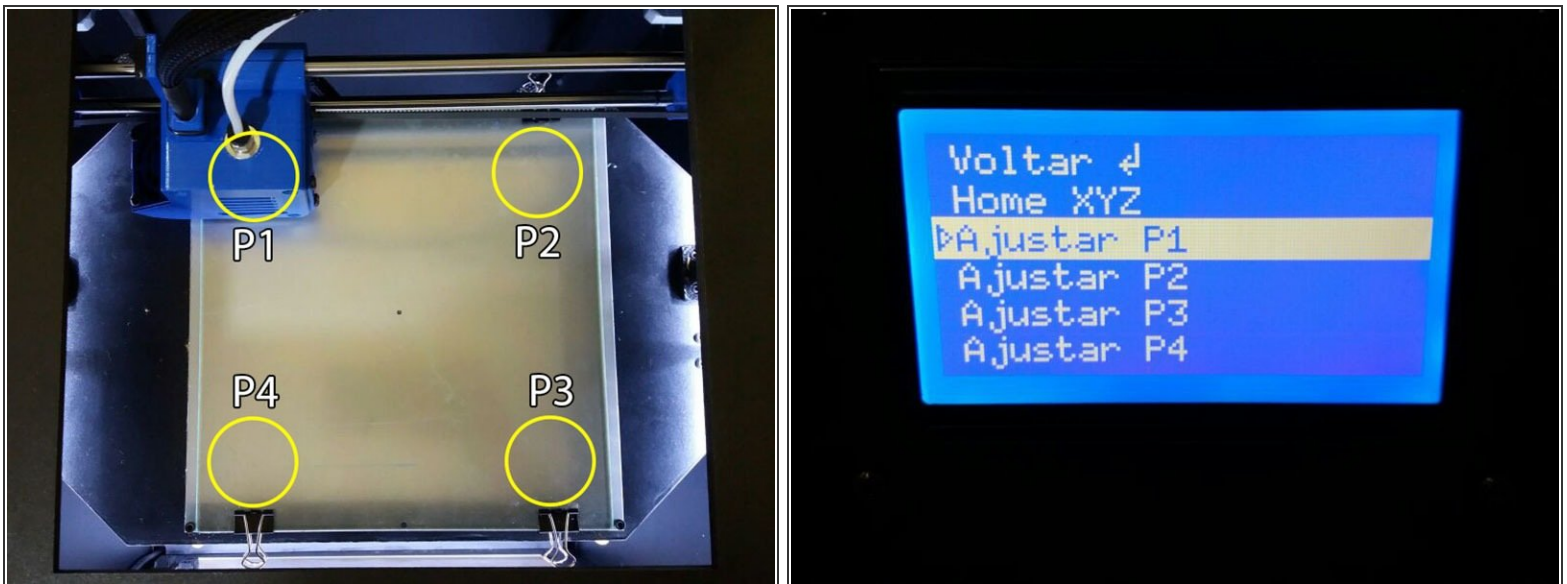


Step 1 — Accessing the menu



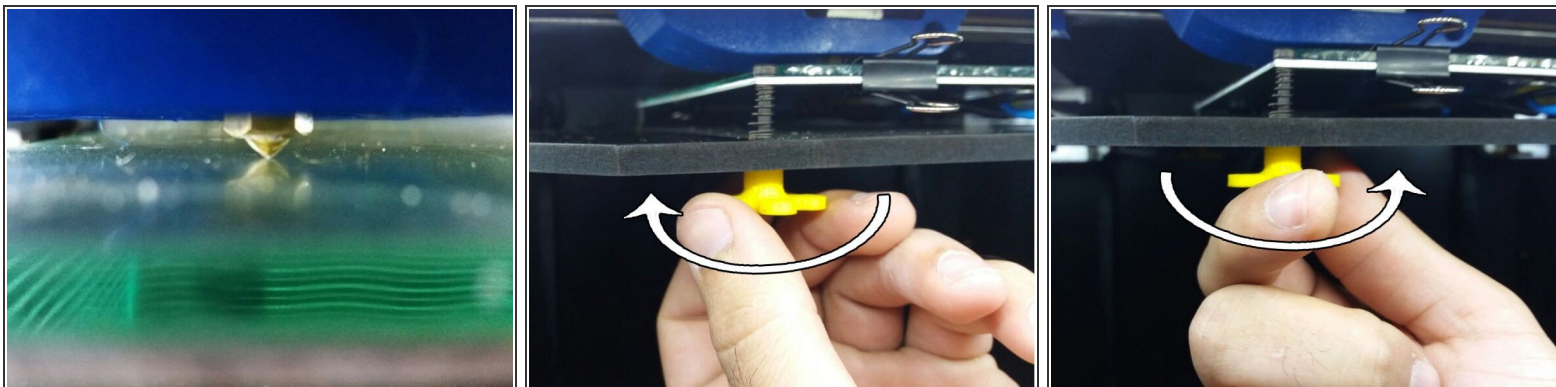
- With the machine on, go to the Quick Settings in the Home Menu.
- Select the "Level Table" option.
- Select "Home XYZ" so that the head goes to the starting position.

Step 2 — Adjustment positions



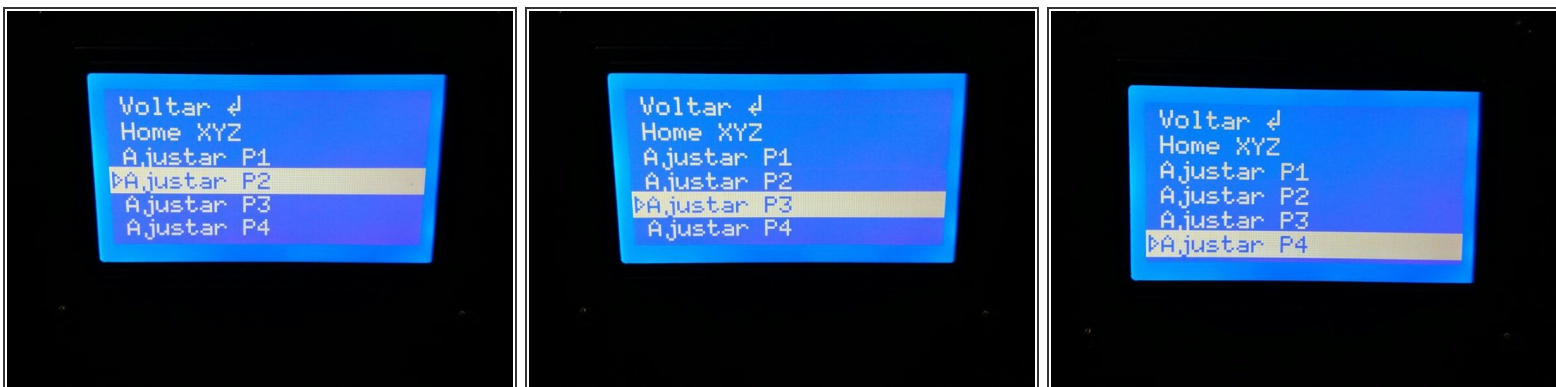
- The leveling should be performed on the 4 points of the table, as shown in the figure.
- Select the "Set P1" option to level the table height at the first point.

Step 3 — Adjusting table height



- The nozzle should be slightly away from the glass (thickness of a sulphite sheet).
- To bring the table closer to the nozzle, turn the rosette clockwise.
- To move the table away from the spout, rotate the rosette counterclockwise.

Step 4 — Adjustment of other points



- Repeat the procedure for adjusting P1 for the other points.

Ready! Your table is level!