



# Tablet Chuwe 10.1 Touch Screen Replacement

Learn how to dismount and loosen the damaged touch screen

Written By: Fran Ruiz



# INTRODUCTION

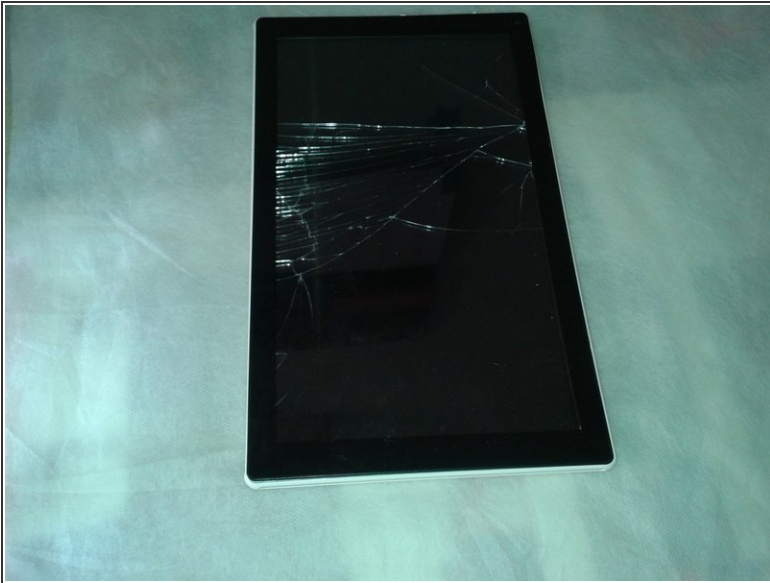
It's common to break the touch screen of your device, we are going to learn to dismount and get to the Flex cable to find out the reference number so we can order a new touch screen to substitute the broken one

---

## TOOLS:

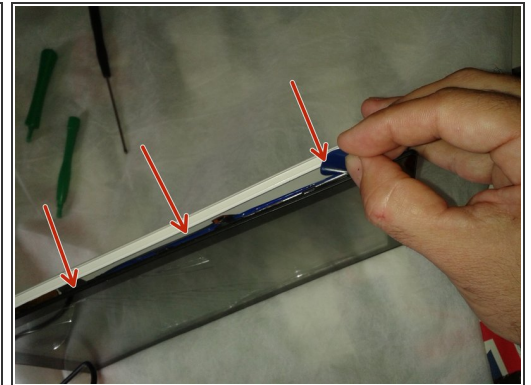
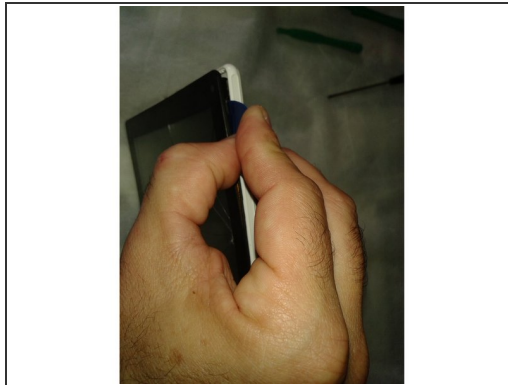
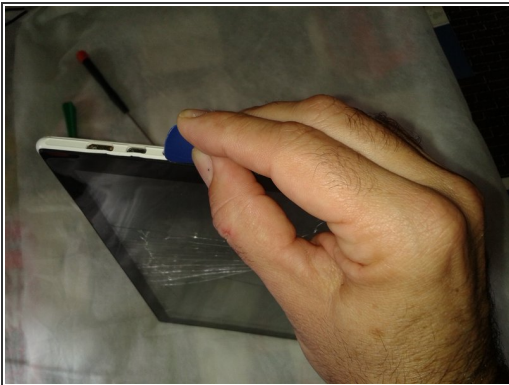
- [Phillips #000 Screwdriver](#) (1)
  - [iFixit Opening Picks set of 6](#) (1)
-

## Step 1 — Touch Screen



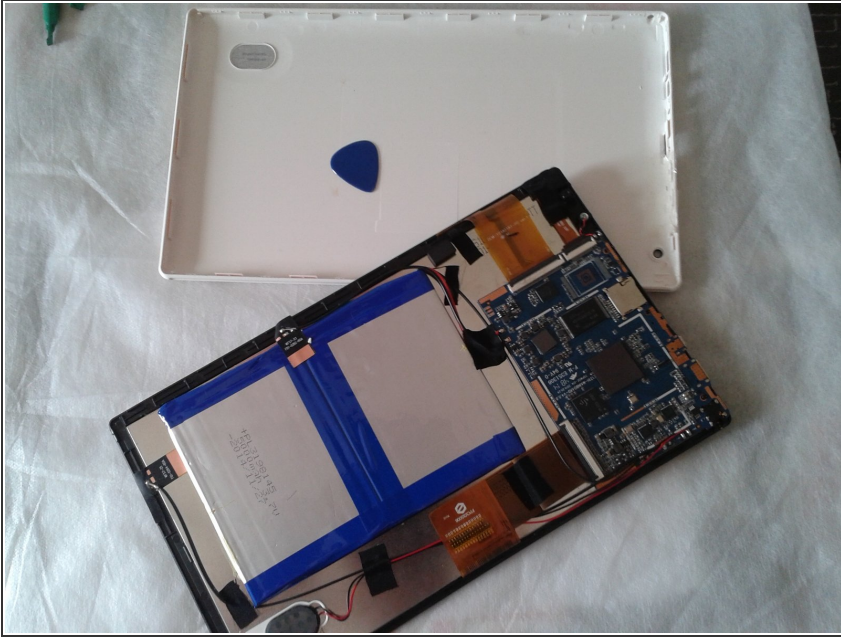
- We must use a plastic guitar pick or in the case that you do not have one, a plastic card can do us helpful (credit card)

## Step 2



- Slowly, insert the pick pressing it and swinging it along the perimeter of the tablet's body

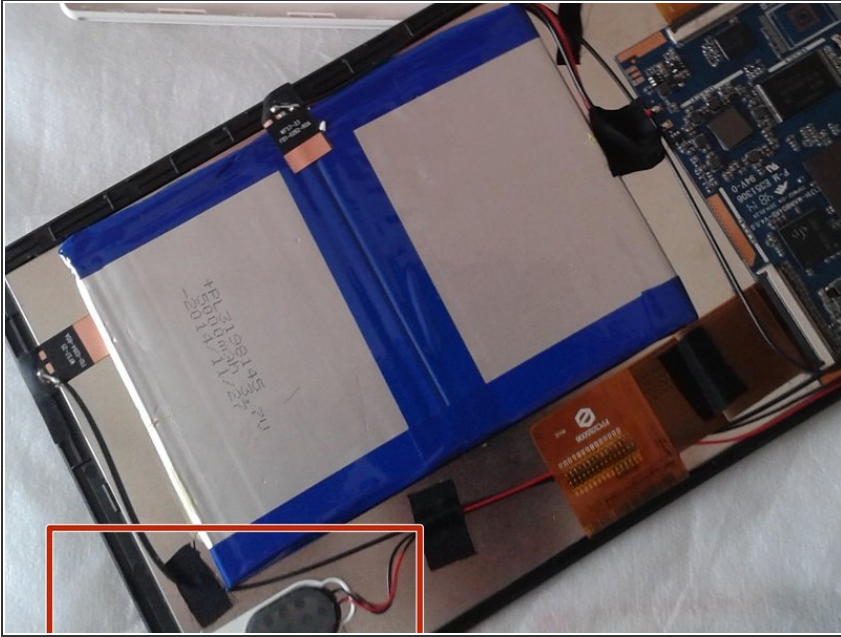
## Step 3



- Carefully loosen with your fingers the back and place the tablet face down on a flat and clean surface

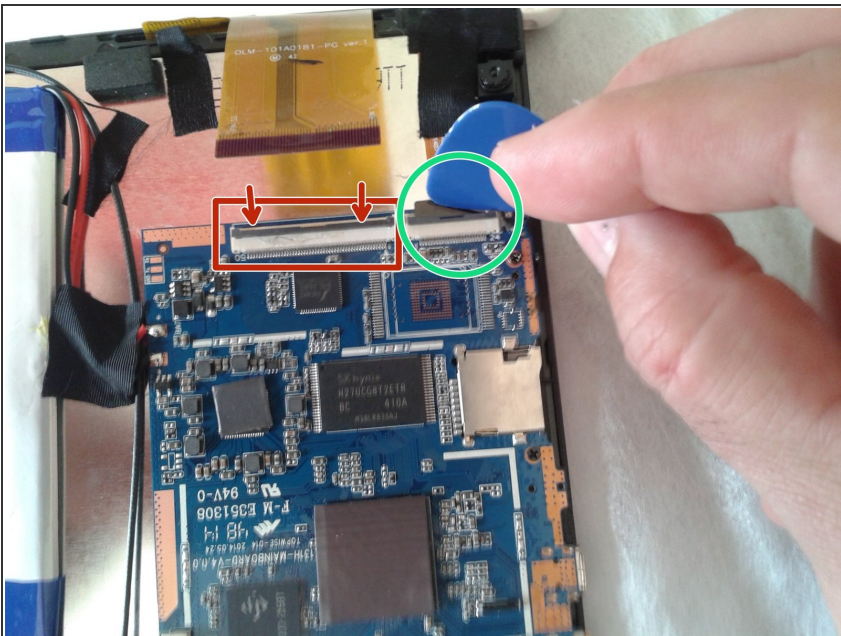


## Step 4



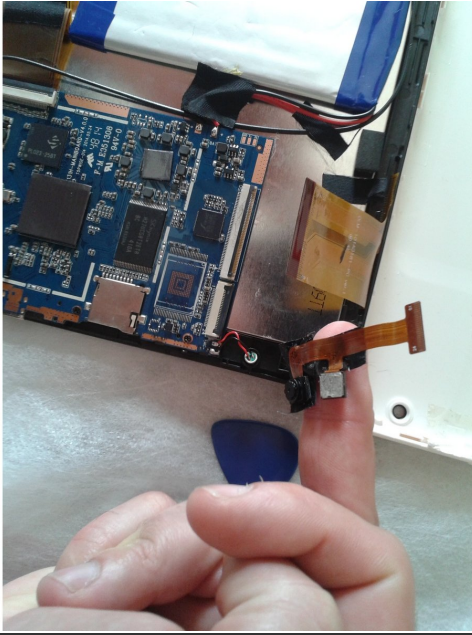
- the speaker is screwed next to the touch chassis, we must release the screw and place it in a visible place, the speaker will remain with adhesive tape next to the battery

## Step 5



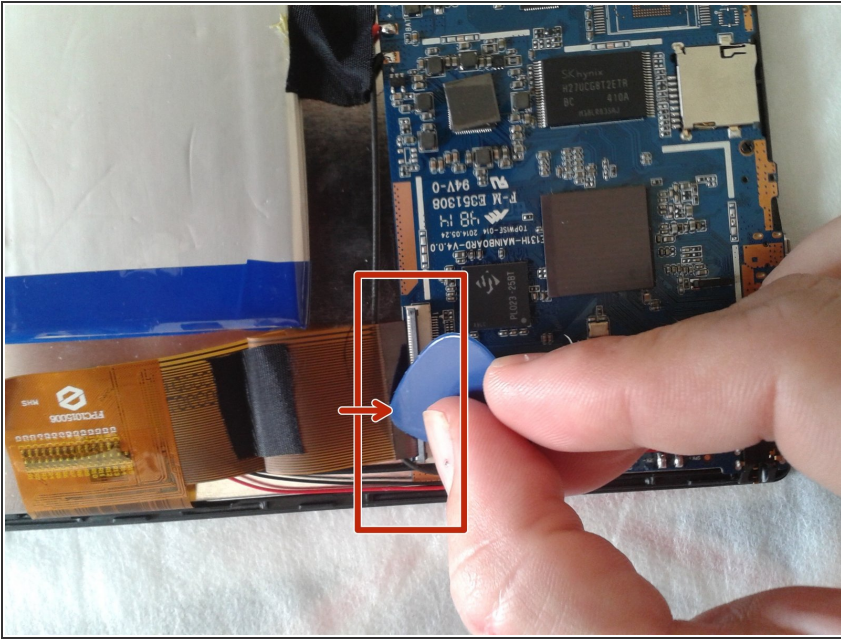
- With the help of the pua or the fingers, we must release the data FLEX from the connection, making a small upward pressure

## Step 6



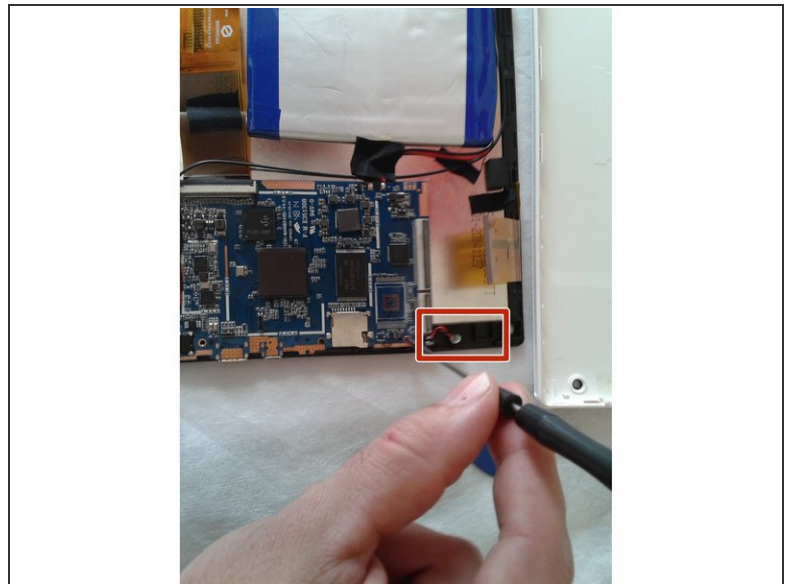
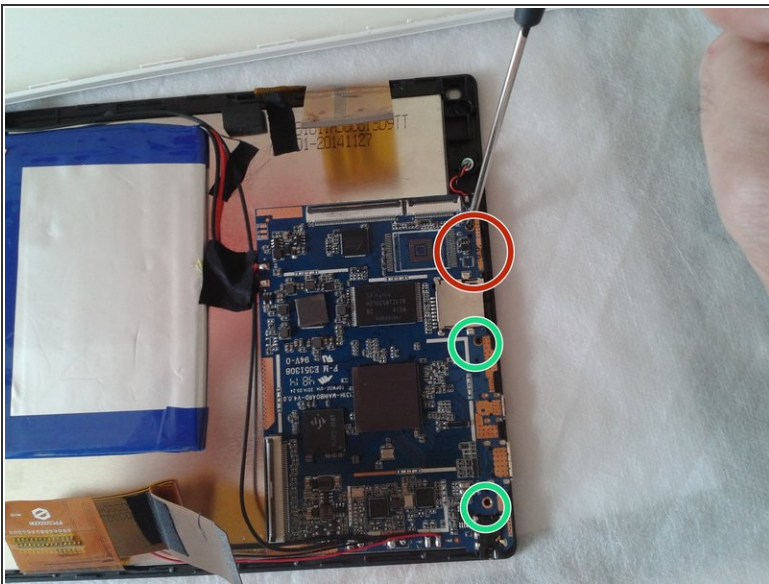
- Careful! The FLEX cable that joins the front and rear camera, will be completely loose, we must place it in a clean place for later assembly.

## Step 7



- we will have a third FLEX on the motherboard, we must do the same method to press up on the connector until it is released, carefully these FLEX are easy to break.

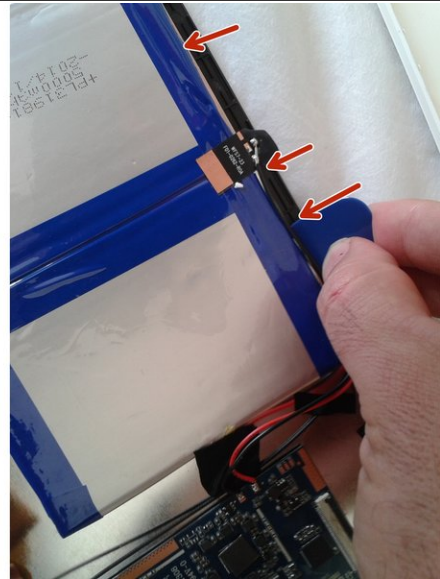
## Step 8



- now with the help of a Phillips screwdriver, we must release the three screws that hold the base plate of the touch screen chassis, and the sensor with positive and negative cables, we can help with the fingers in a smooth way.



## Step 9



- carefully, we already have the loose base plate of the touch chassis, we look at the various grips that connect the touch screen with the LCD and with the time and small balancing we are doing pressure to separate touch and LCD screen.

## Step 10



- Following these steps we have loosen our LCD screen and the carcass of the touch screen, now we must look for the reference number that appears on the FLEX cable of the touch screen so we can order a new one

In order to reassemble your device, follow these instructions in reverse order