



Tagital T10 Power button Replacement

A guide to replace your Tagital T10 power button.

Written By: Destin Dawsy



INTRODUCTION

The power button is located at the top of your device, by the camera. This button can deteriorate over time or by rough handling, preventing the device from powering on and off or entering sleep mode. To fix this, the power button must be replaced.



TOOLS:

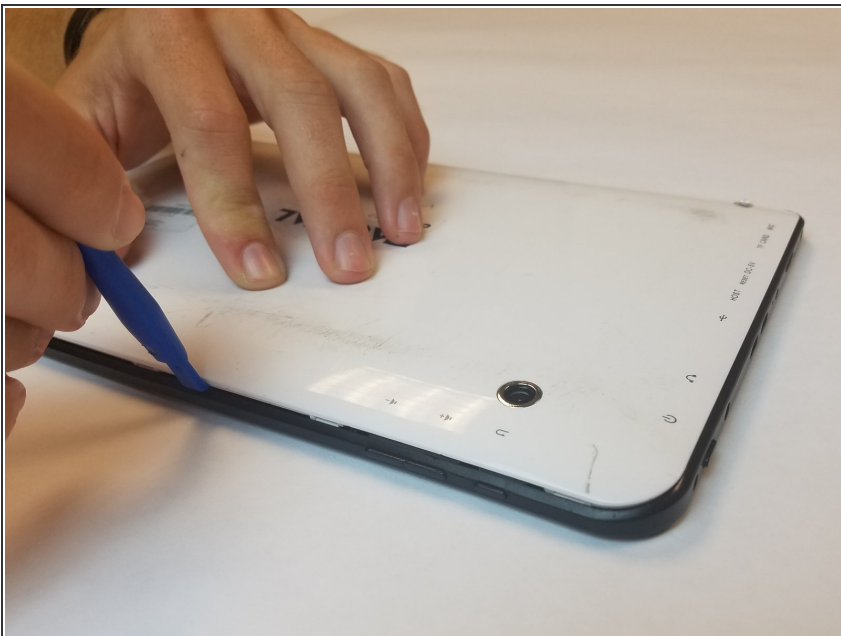
- [Phillips #000 Screwdriver](#) (1)
 - [Tweezers](#) (1)
 - [iFixit Opening Tools](#) (1)
-

Step 1 — Power button



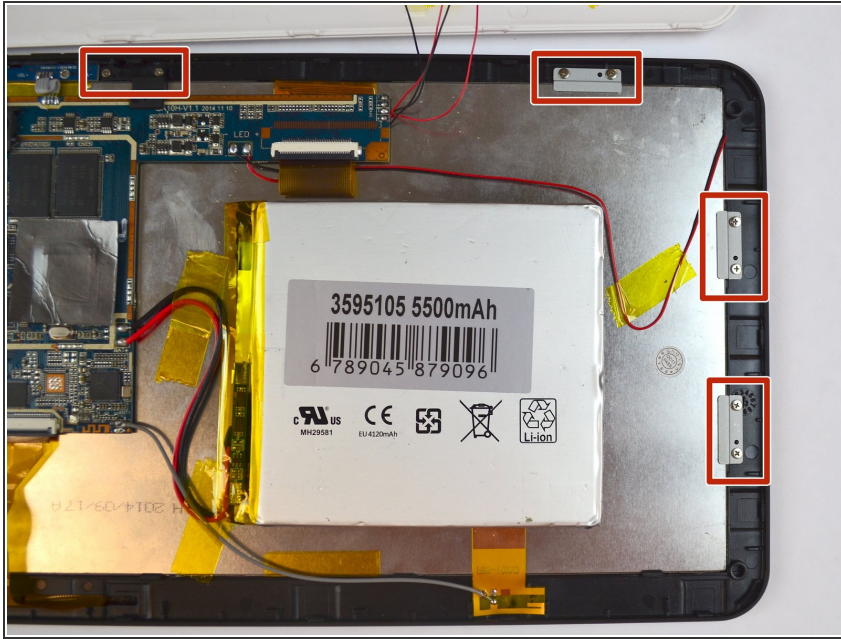
- ★ Always make sure your device is completely powered off before performing repairs.
- Remove the two 4 mm Phillips head screws at the top of the tablet.

Step 2



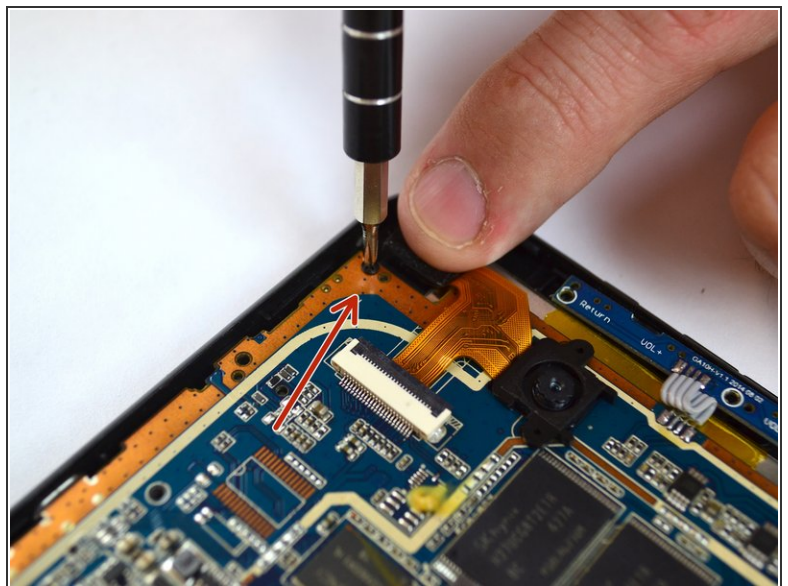
- Carefully remove the back cover by using a plastic opening tool, moving all the way around the perimeter of the tablet.
- Set the back cover aside.
- ⚠ The speakers are attached to the inside back cover, and are connected by wires to the motherboard of the tablet. Carefully set the back cover aside so that you do not rip the wires free.

Step 3



- Remove all of the 4mm screws that attach the display screen to the back of the touch screen with brackets.
- ⓘ There should be a total of 8 screws and at size PH000.

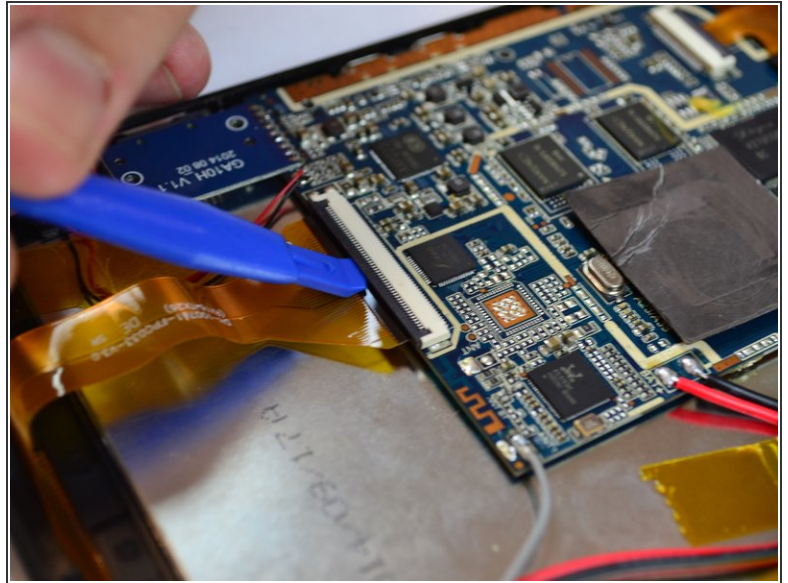
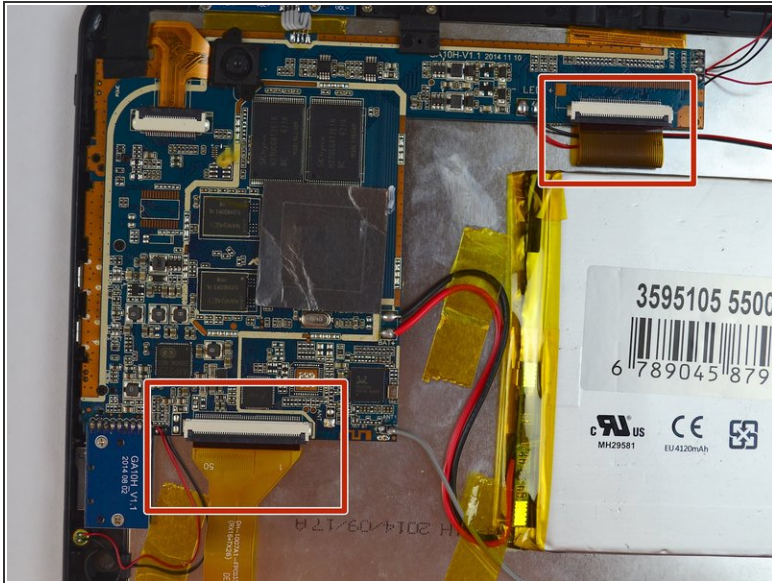
Step 4



- Remove all of the 4mm screws that attach the motherboard to the rest of the device.
- ⓘ One screw is located beneath the black tape that holds the rear-facing camera in place. Peel the tape up to access it.
- ⓘ There should be a total of 7 screws at size PH000.

This document was generated on 2019-09-19 05:27:57 PM (MST).

Step 5



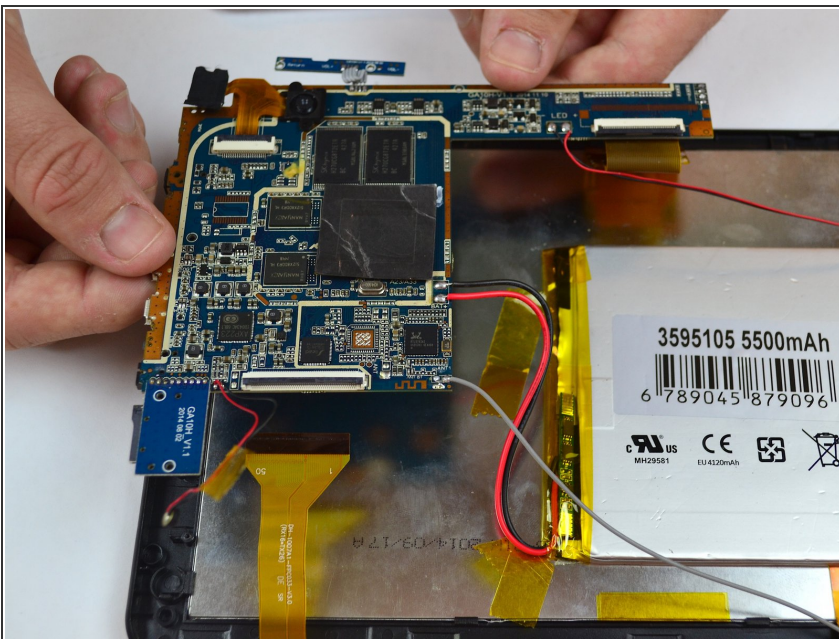
- Locate the 2 ZIF connectors.
- Flip up the black tab to release the two filaments, so that they are no longer connected to the motherboard.

Step 6



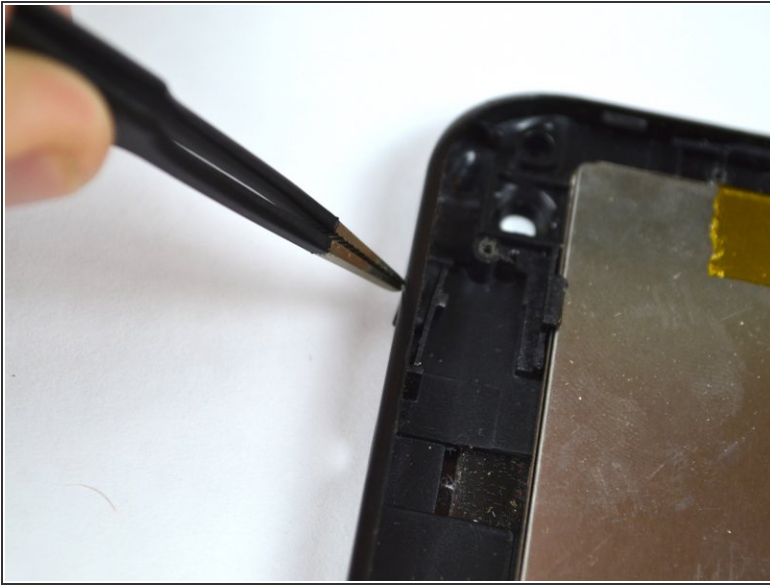
- Locate the notification light on the upper corner of the device.
- Gently pull on the wires to remove the light from it's housing.

Step 7



- Remove the motherboard from the back of the display screen.
- ⚠ Some wires are still attached to the device, so carefully set it to the side.

Step 8



- Push the power button towards the interior of the device to free it from its slot, using tweezers.

To reassemble your device, follow these instructions in reverse order.