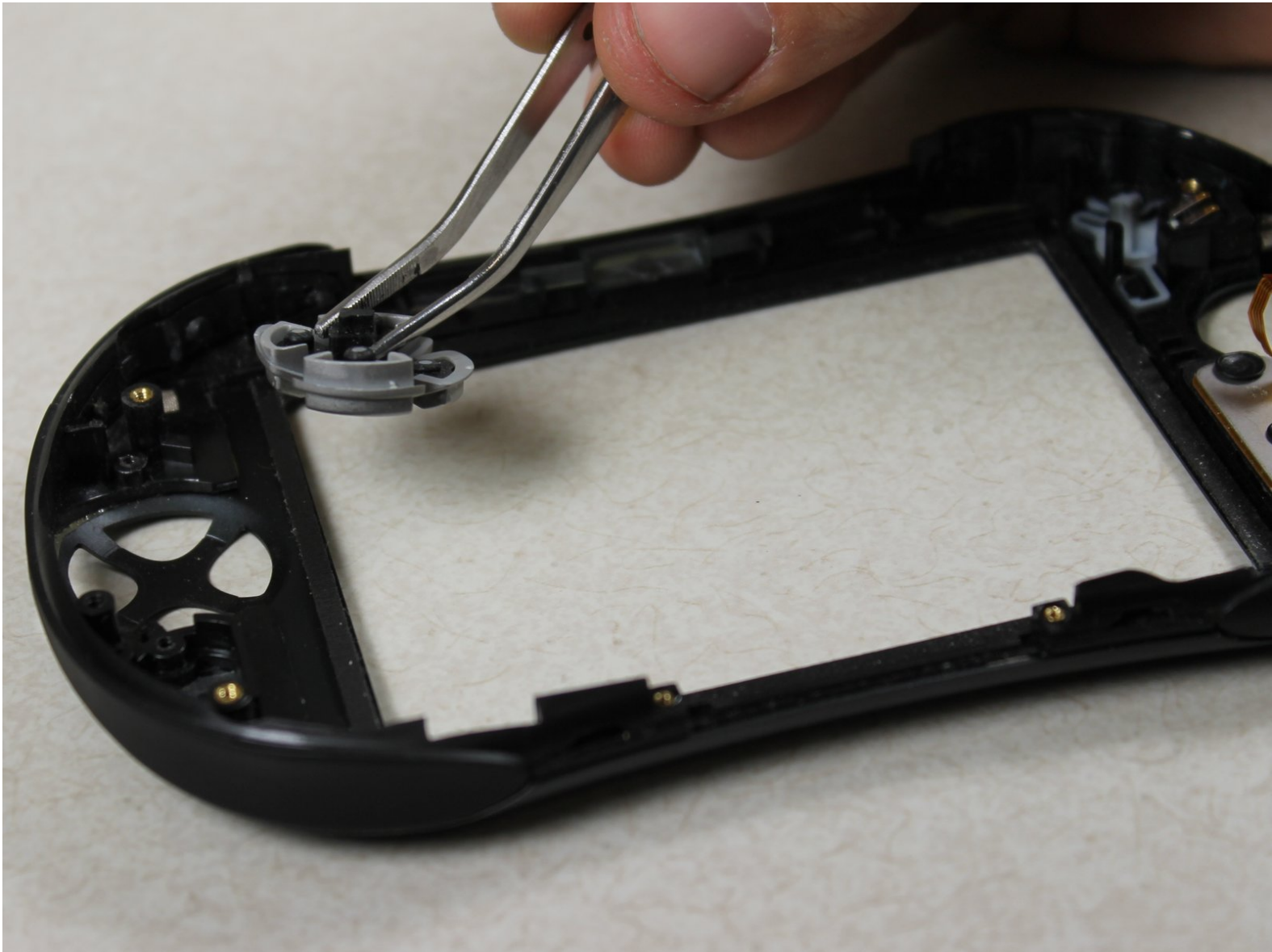




Tapwave T2907US Zodiac 2 Directional Pad Replacement

Installing a new directional pad in place of a broken one.

Written By: Daniel Wiseman



INTRODUCTION

Use this guide when the directional pad needs to be replaced.



TOOLS:

- [Phillips #00 Screwdriver](#) (1)
 - [Spudger](#) (1)
 - [T5 Torx Screwdriver](#) (1)
-

Step 1 — Back Cover



- Remove the four Torx T5 screws from the back panel.

Step 2



- Wedge a spudger in between the front and back panel.
- Apply leverage downwards to the spudger in order to remove the back panel.

Step 3 — Battery



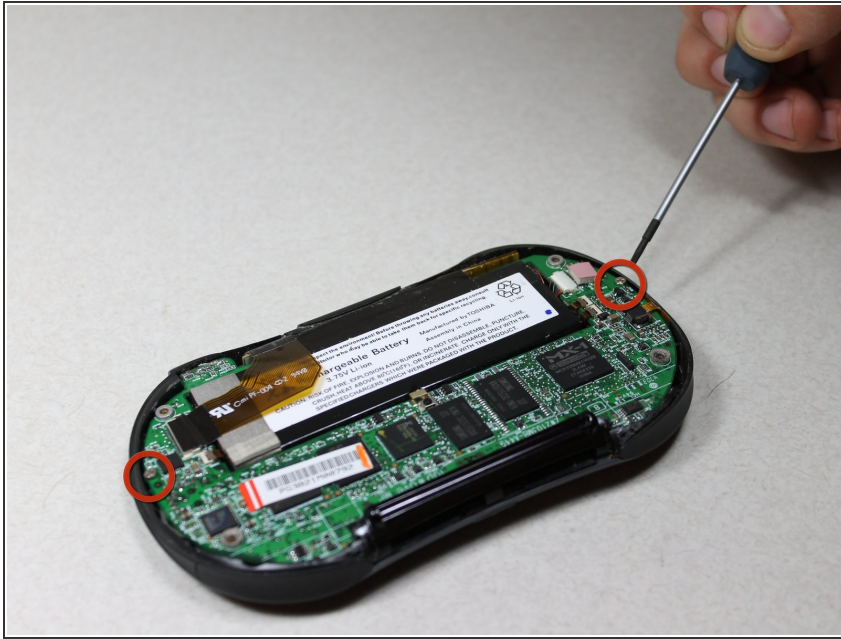
- Slide the battery out from under the brown wire-tape.
- Be careful of the wires still connected to the other end of the battery. Do not pull or damage may occur.

Step 4



- Slowly pull the white plug from its receptor. Grasp its sides firmly with a pair of tweezers and gently wiggle from side to side.

Step 5 — Directional Pad



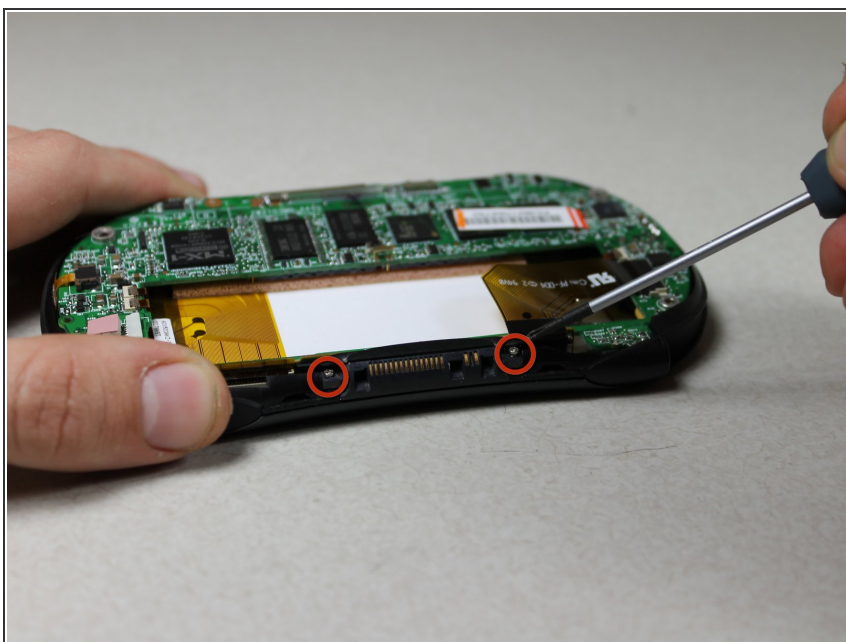
- Unscrew the 2 Philips #00 screws on each end of the motherboard.

Step 6



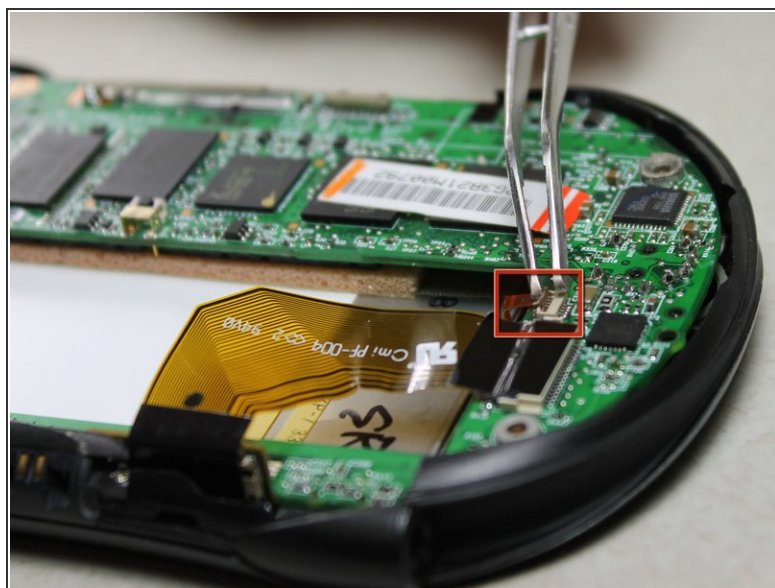
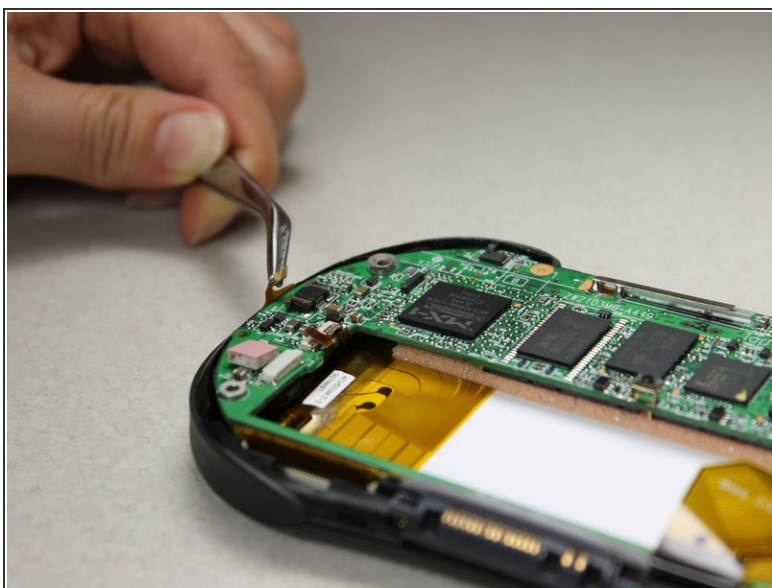
- Pull off the black memory card slot piece.

Step 7



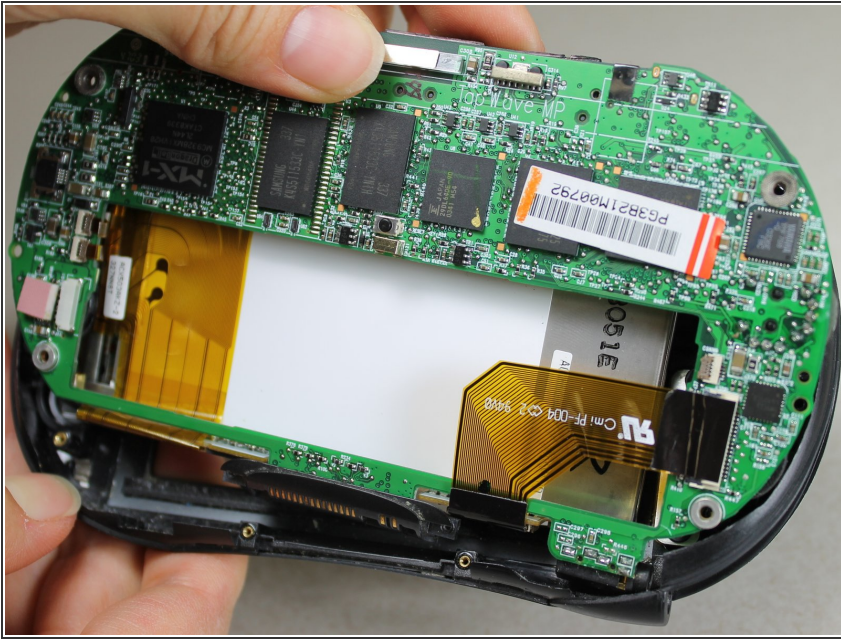
- Unscrew the 2 Philips #00 screws on each side of the charging port.

Step 8



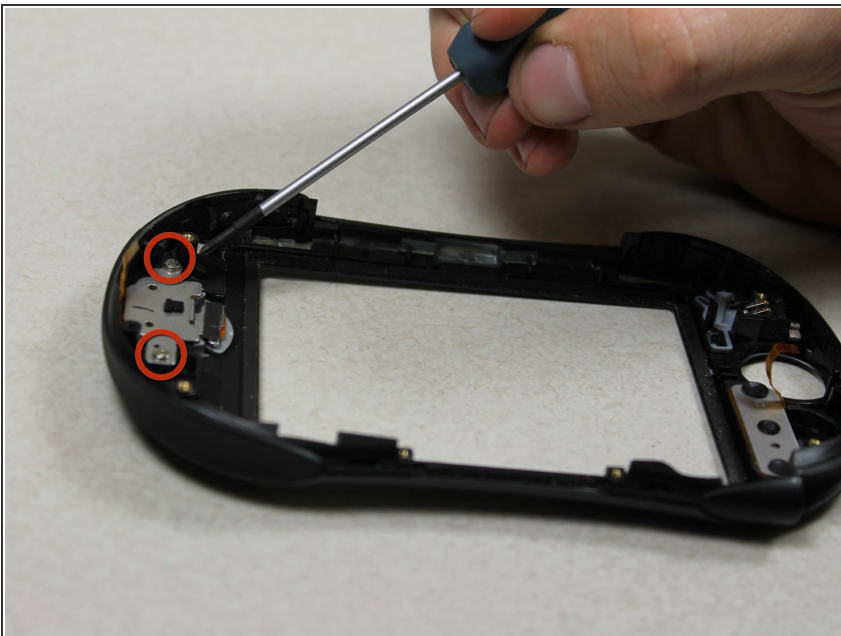
- Disconnect 2 brown wire-tape ends from each end of the motherboard. Gently pull straight out with tweezers.

Step 9



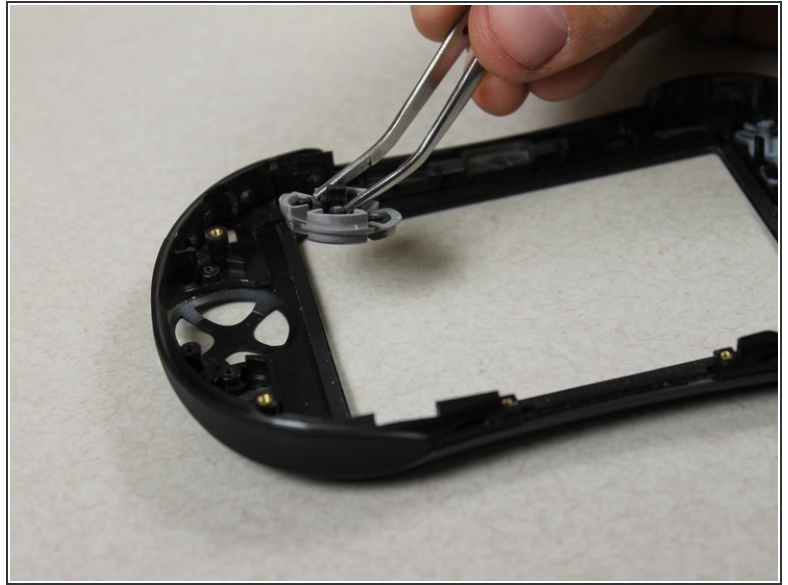
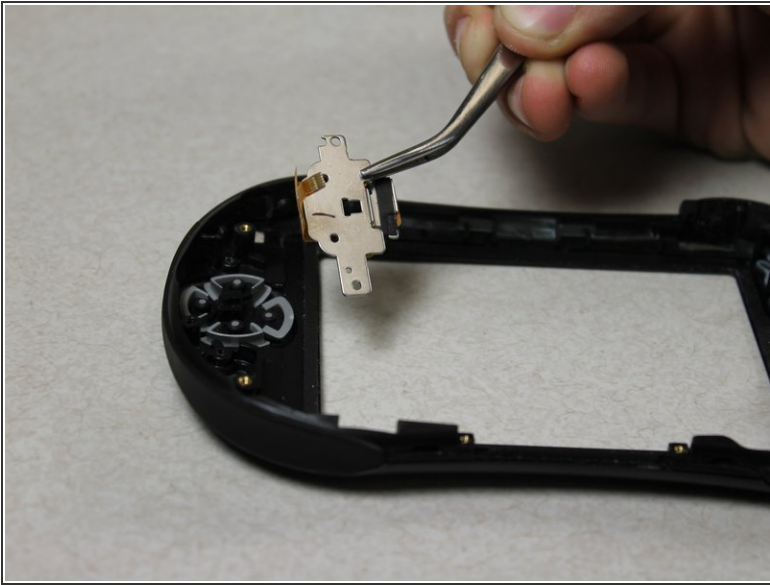
- Grasp the upper left edge of the motherboard and slide diagonally up and left away from the auxiliary port entrance.
- ⓘ Glue connecting the port to the casing may make it difficult to remove. Gently apply force as needed.

Step 10



- Unscrew the 2 silver Philips #00 screws from both sides of the directional pad component on the front casing.

Step 11



- Take out the 2 pieces of the directional pad with tweezers.

To reassemble your device, follow these instructions in reverse order.