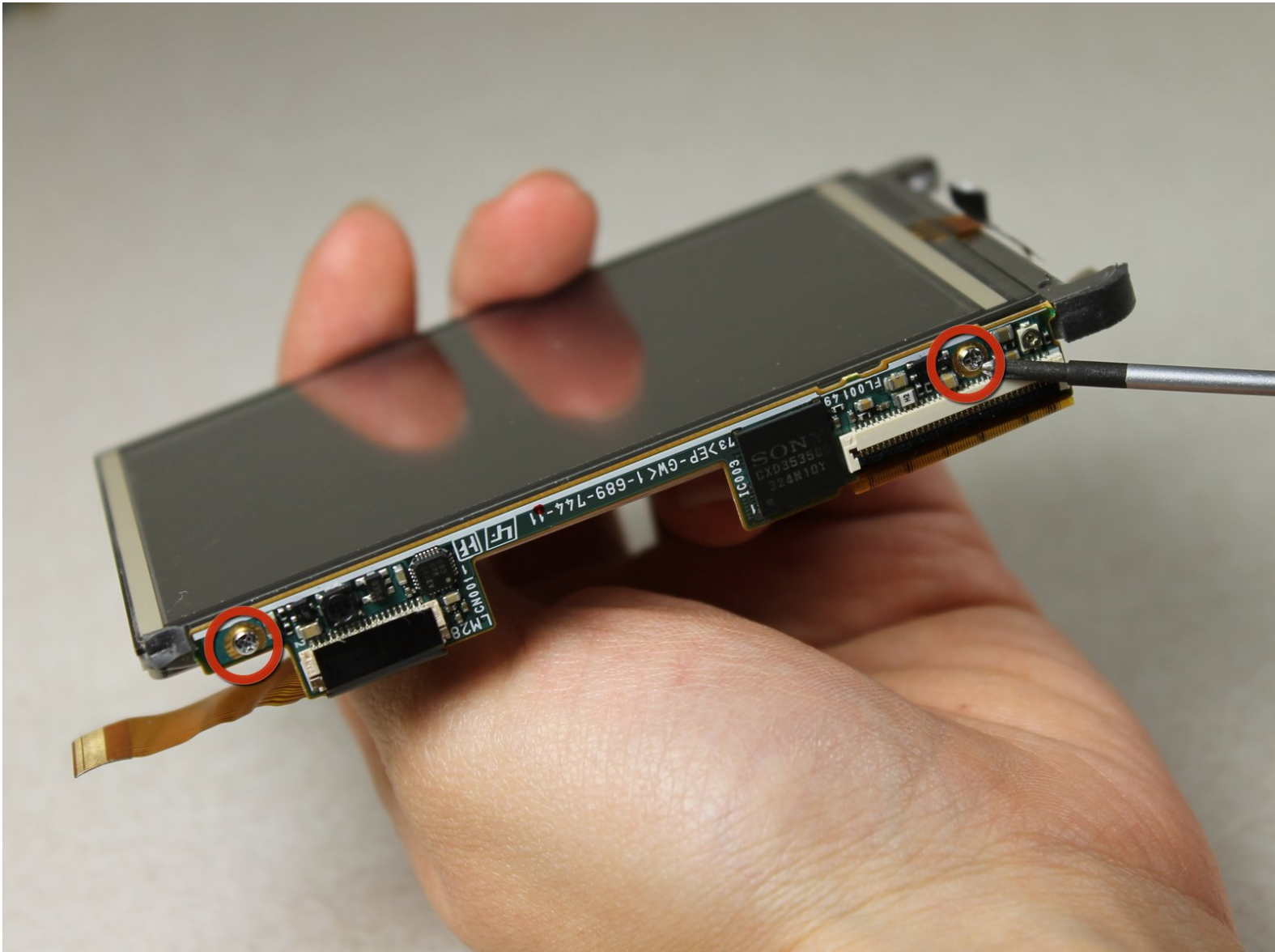




# Tapwave T2907US Zodiac 2 Touchscreen/Display Replacement

Installing a brand new screen in place of a broken one.

Written By: Daniel Wiseman



# INTRODUCTION

Use this guide when you need to replace your display due to a clumsy mistake.



## TOOLS:

- [Tweezers](#) (1)
  - [Phillips #00 Screwdriver](#) (1)
  - [Spudger](#) (1)
  - [T5 Torx Screwdriver](#) (1)
-

## Step 1 — Back Cover



- Remove the four Torx T5 screws from the back panel.

## Step 2



- Wedge a spudger in between the front and back panel.
- Apply leverage downwards to the spudger in order to remove the back panel.



## Step 3 — Battery



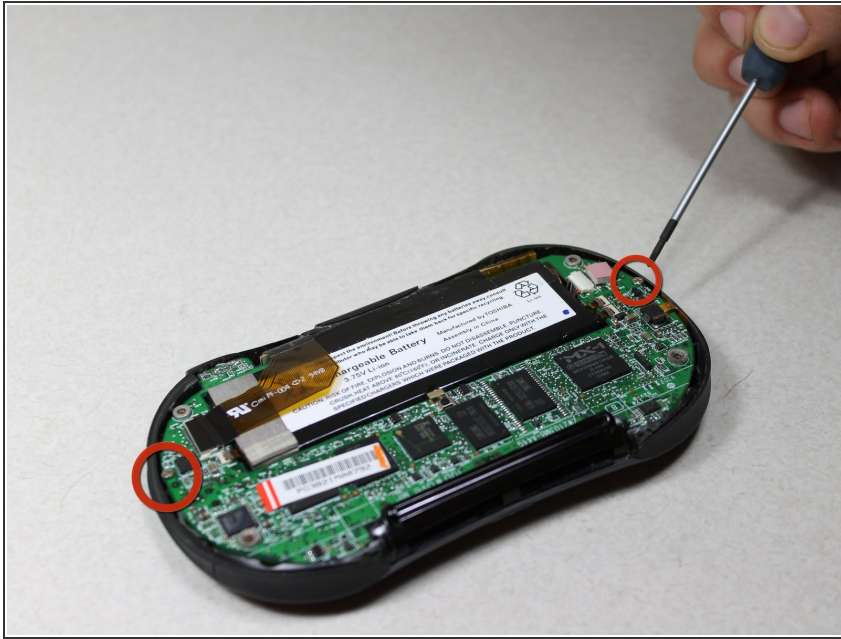
- Slide the battery out from under the brown wire-tape.
- Be careful of the wires still connected to the other end of the battery. Do not pull or damage may occur.

## Step 4



- Slowly pull the white plug from its receptor. Grasp its sides firmly with a pair of tweezers and gently wiggle from side to side.

## Step 5 — Motherboard



- Unscrew the 2 Philips #00 screws on each end of the motherboard.

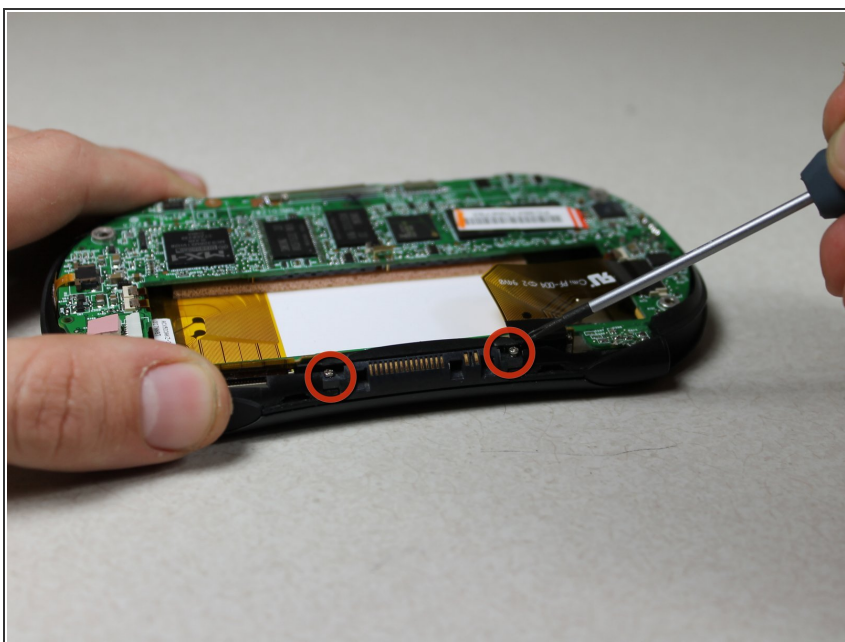
## Step 6



- Pull off the black memory card slot piece with tweezers.

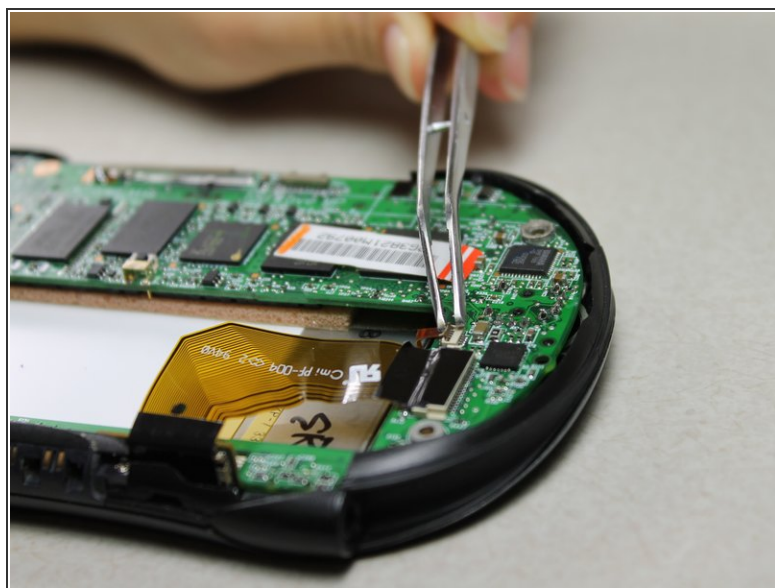
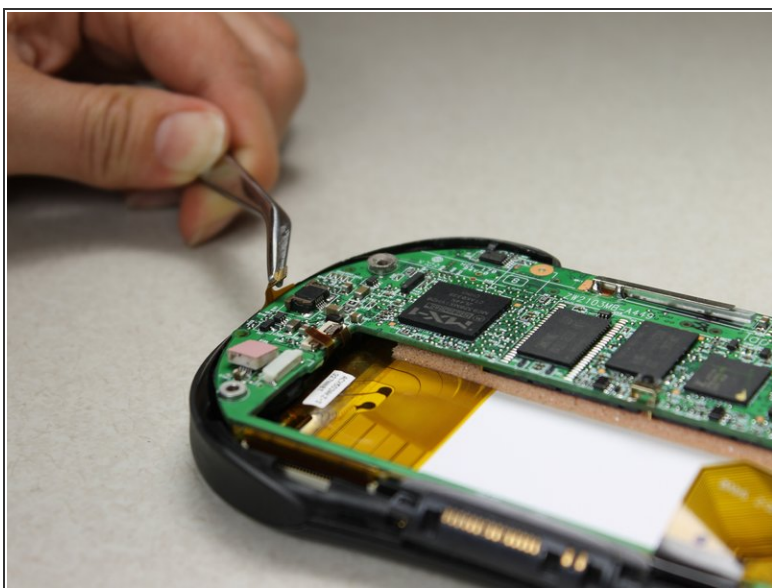


## Step 7



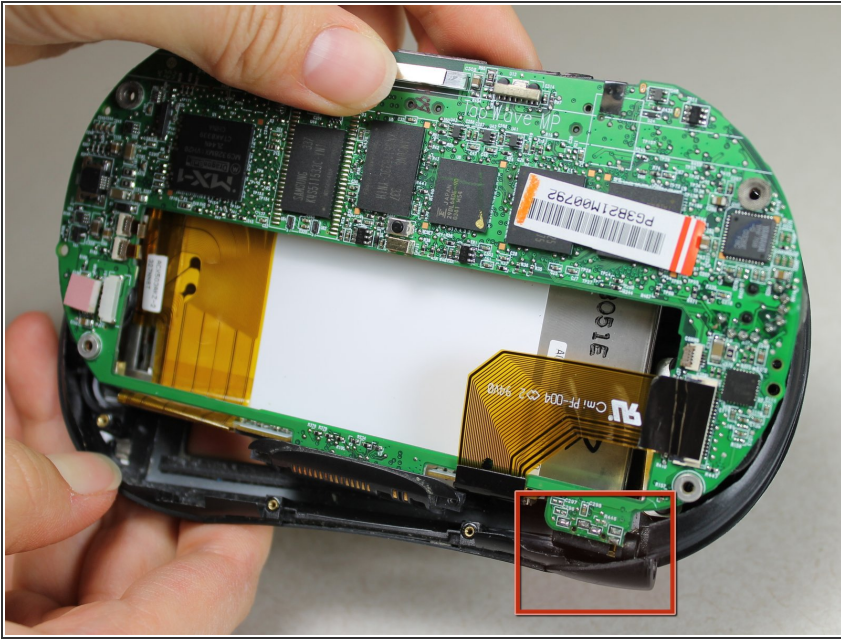
- Unscrew the 2 Philips #00 screws on each side of the charging port.

## Step 8



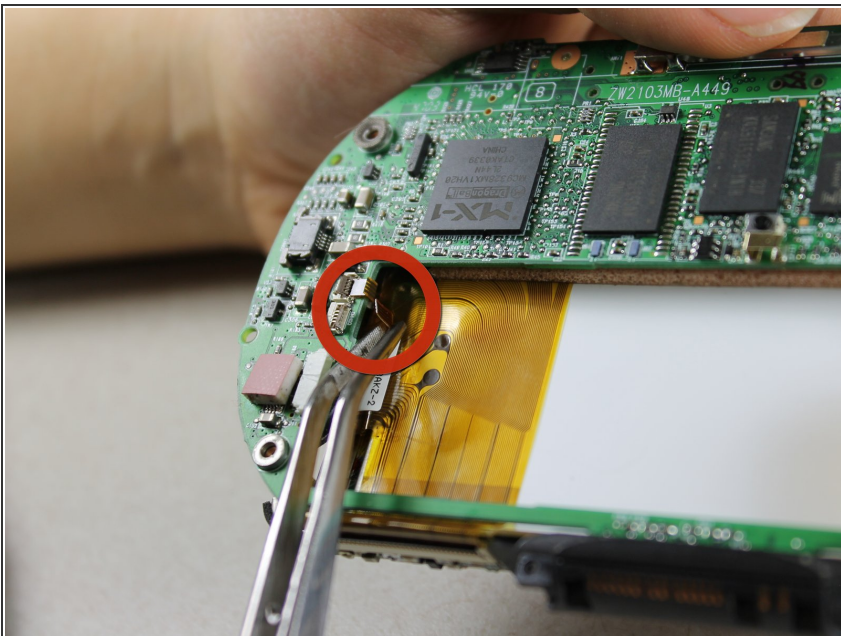
- Disconnect 2 brown wire-tape ends from each end of the motherboard. Gently pull straight out with tweezers.

## Step 9



- Pull the motherboard and screen component diagonally up and left away from the auxiliary port entrance to remove.
- ⓘ Glue connecting the auxiliary port to the casing may make it difficult to remove. Gently apply force as needed.

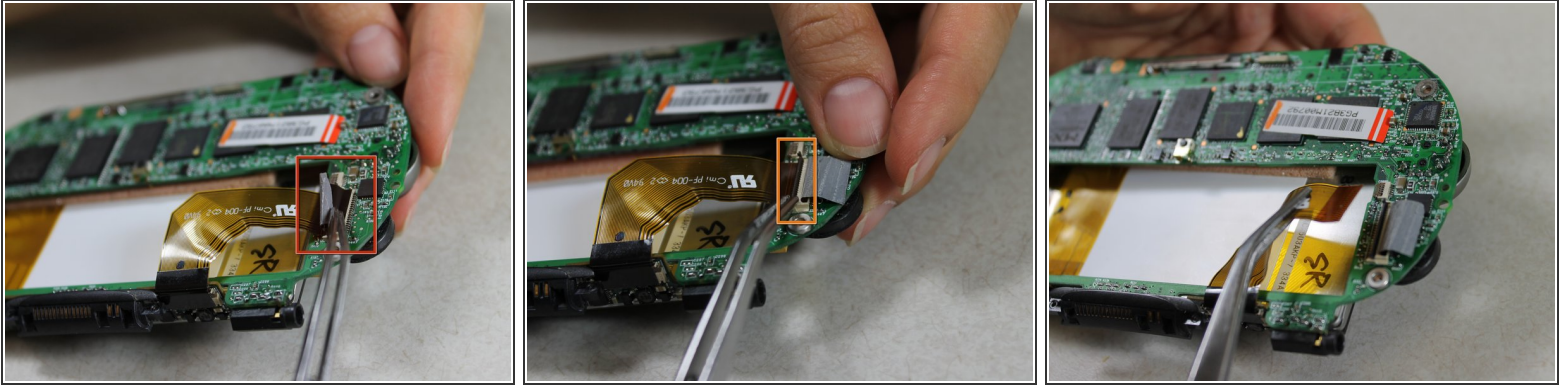
## Step 10



- Disconnect the 2 brown wire-tape ends from the left side of the battery slot on the motherboard using tweezers.

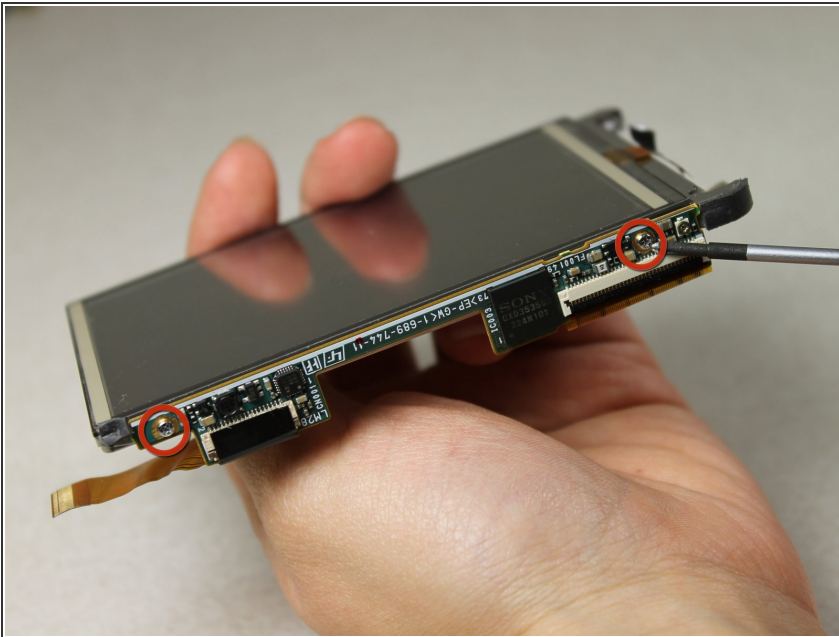


## Step 11



- Disconnect the large brown wire-tape from the motherboard.
- Peel the black tape back from the wire-tape using tweezers.
- Lift the black, hinged, plastic lock with tweezers to release the wire-tape.
- The screen and motherboard components can now be separated from each other.

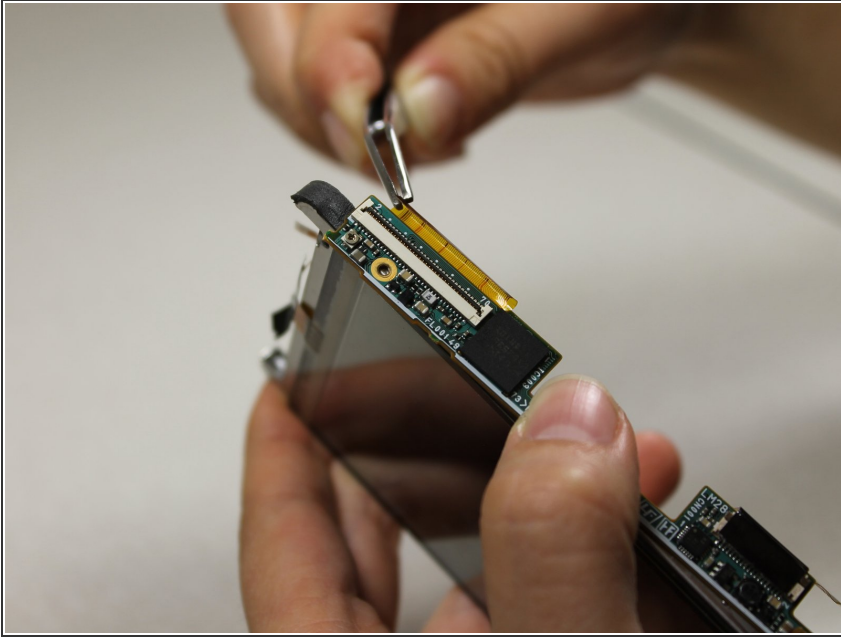
## Step 12 — Touchscreen/Display



- Unscrew the 2 Philips #00 screws from the bottom edge of the screen component.

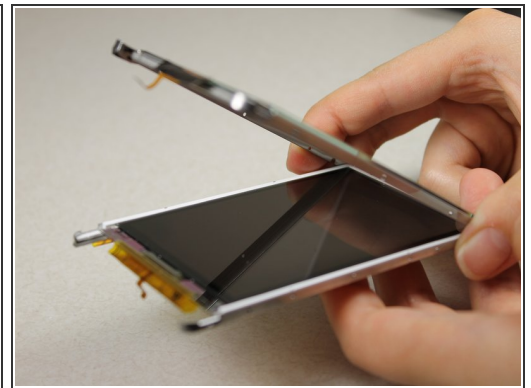
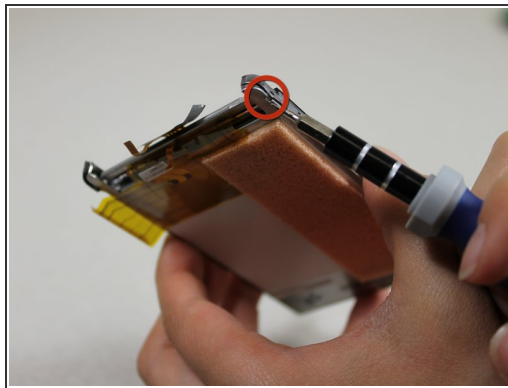
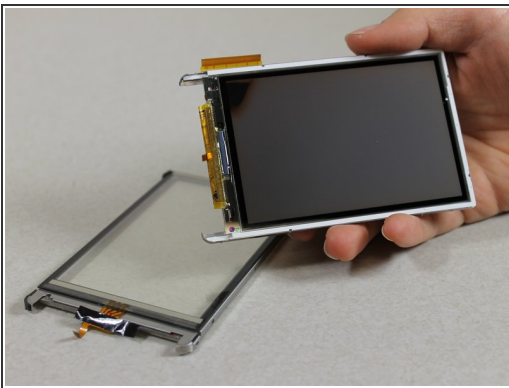


## Step 13



- Take off the brown wire-tape from the small circuit board component.
- Lift up so that the black plastic hinge piece swings open and the tape can be removed.

## Step 14



 **Warning:** If you are too rough with the screwdriver, you can permanently damage the display.

- Use a Slot SL1.5 screwdriver to pry the touchscreen shell from the display component using the 4 slots around the entire component

To reassemble your device, follow these instructions in reverse order.