



# Tea Kettle Switch Replacement

It is not an unusual problem: the switch of your kettle pops out of its container and you're not able to put on your kettle anymore.

Written By: Anniek Moll






## TOOLS:

- [Phillips #2 Screwdriver](#) (1)
-

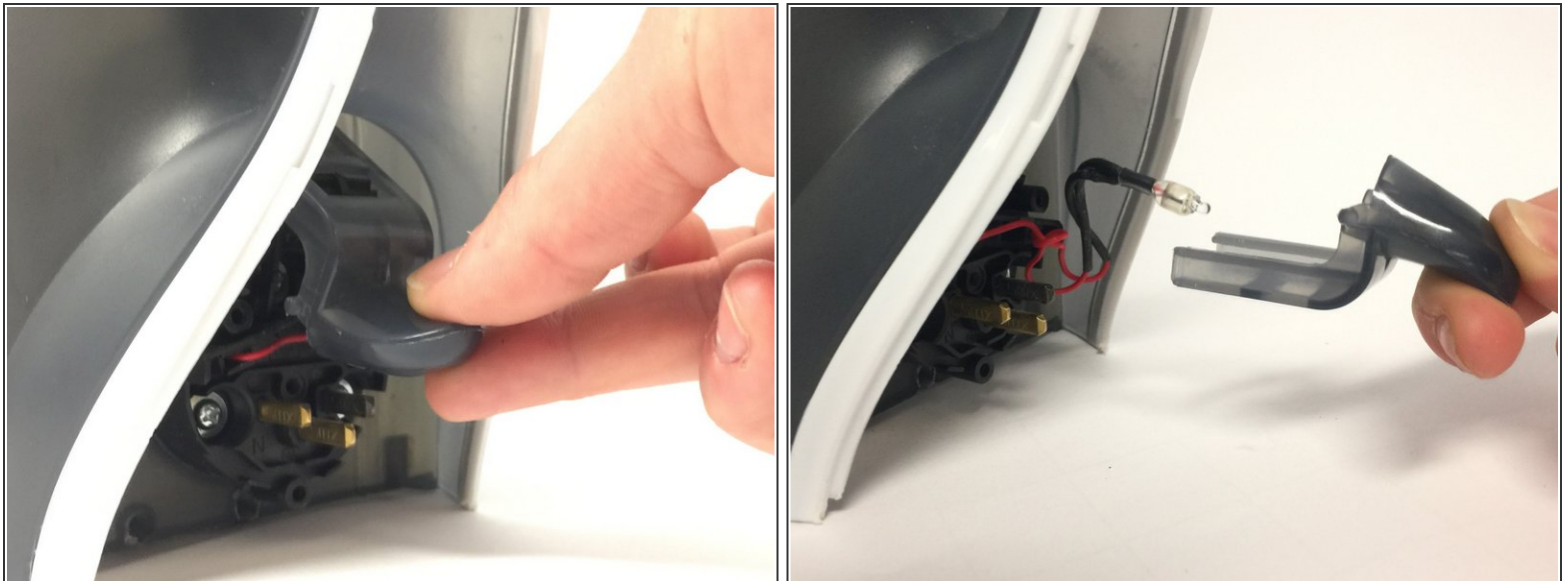
## Step 1 — Switch




 Before you start: disconnect the device from power

- Unscrew the bottom screws (2x)
- Unscrew the top screws (2x)
- Take off the handle part

## Step 2



- Pull out the switch

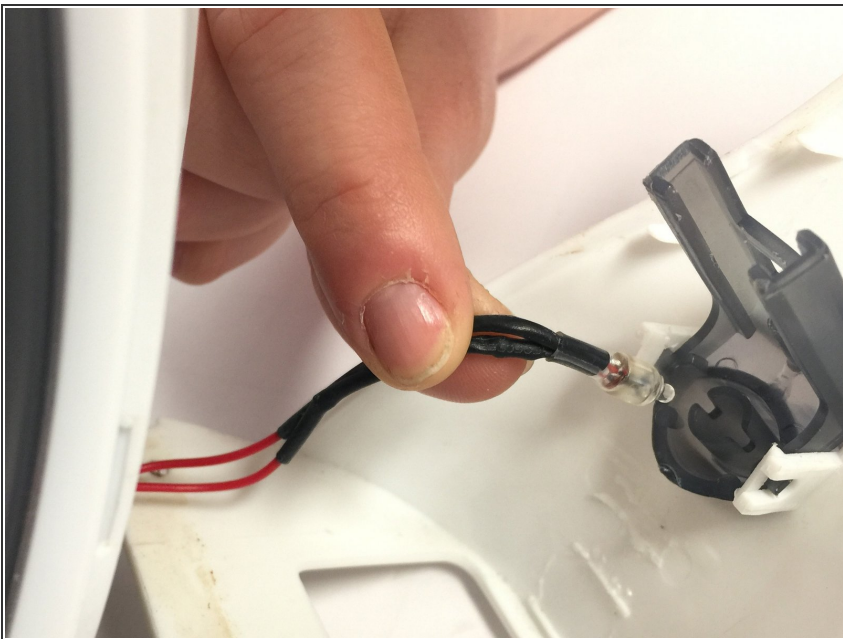
 it is possible you pull too hard and take out another part and the spring that are positioned behind the switch.

### Step 3



- Click the switch back into the handle part

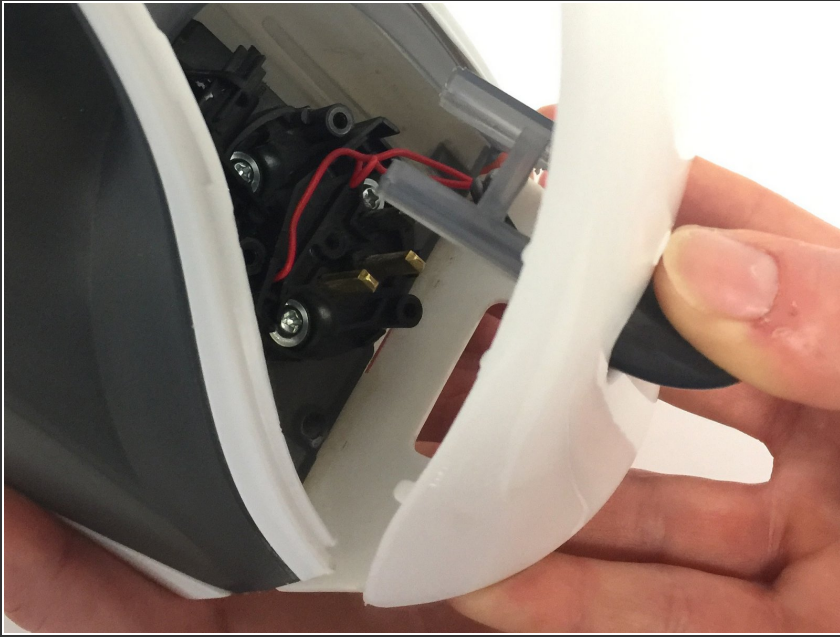
### Step 4



- Put the light back into the switch

⚠ This might take some extra attention, a precise work.

## Step 5



- Put back the handle part on the frame

## Step 6



- Plug in the kettle
- Put down the switch to check if it works again

To reassemble your device, follow these instructions in reverse order.