



Teardown: Breville Toaster

This guide will give you photographic images and descriptions as how to teardown a Breville toaster.

Written By: Aisyah Azmi



INTRODUCTION

This teardown is done as to comply with the task 2 IDES 2171. Photographed and written by Ashley Mutandiro and Aisyah Azmi, first year students of Bachelor of Industrial Design UNSW Sydney, Australia.



TOOLS:

- [64 Bit Driver Kit](#) (1)
 - [Spudger](#) (1)
 - [Slip Joint Pliers](#) (1)
-

Step 1 — Breville Toaster Teardown



- Breville Toaster.
- The toaster before the teardown process.

Step 2



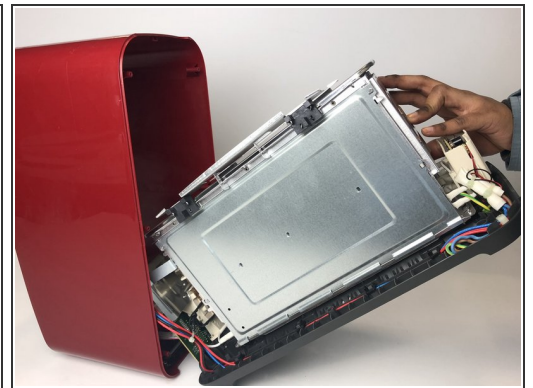
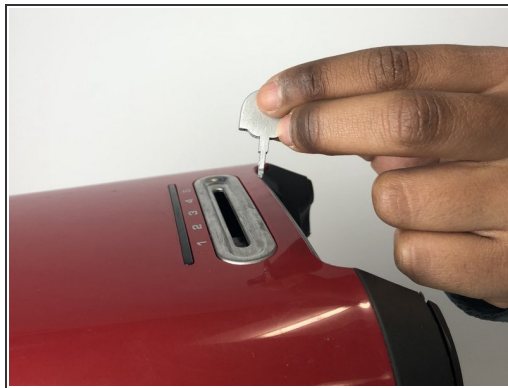
- Turn the toaster upside-down.
- Use the drill to unscrew the six slotted Spanner head screws
- Use the drill with corresponding screwdriver bit to remove the Truss Phillip screws
- The Slotted Spanner head screws hold the four rubber feet at the bottom of the casing.

Step 3



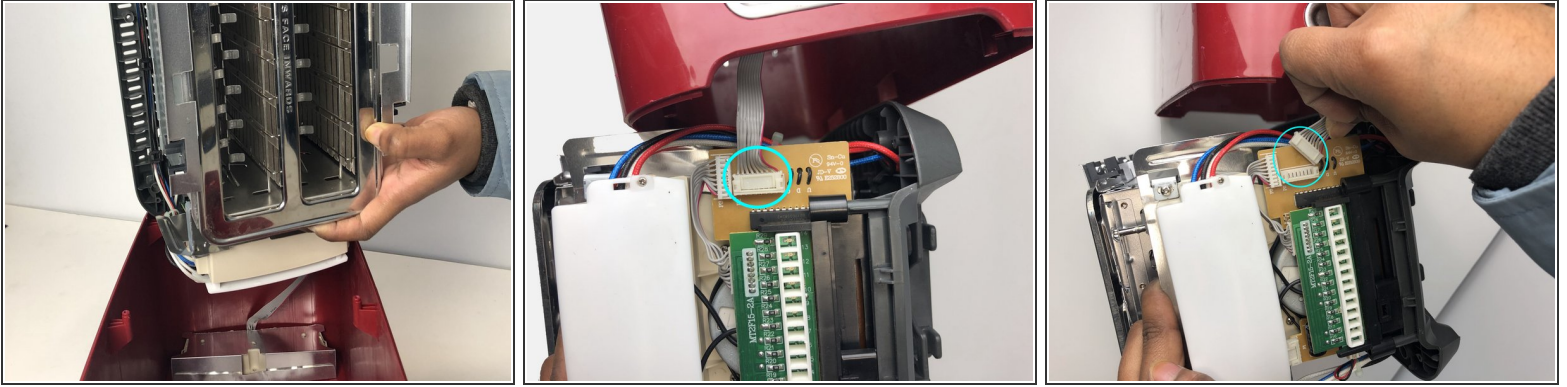
- Unattach the four rubber feet.

Step 4



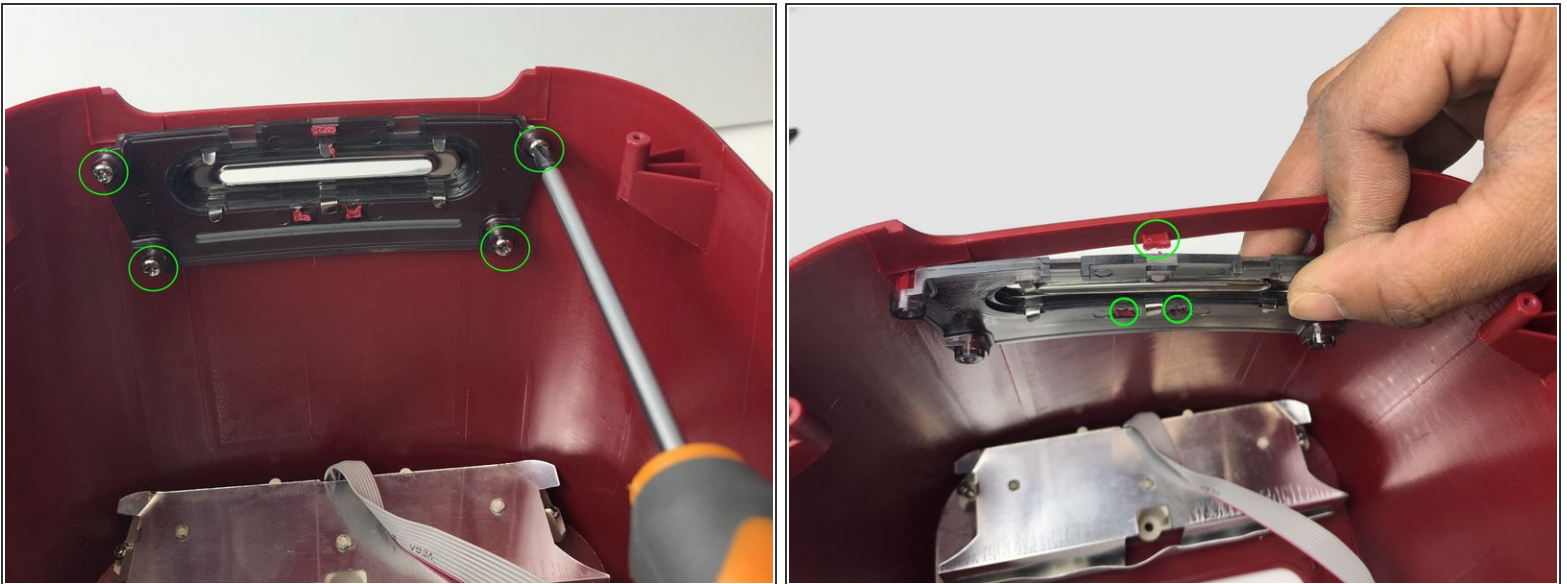
- Detach the timer knob using a flat head screw driver
- Remove the internal components from the red casing

Step 5



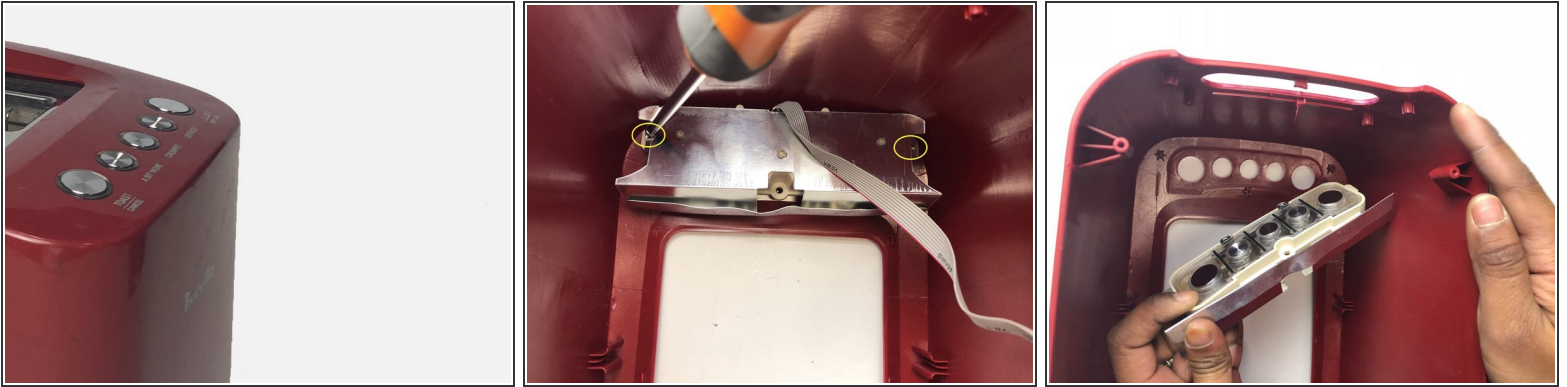
- **Note:** Red casing is still attached to the interior body of the toaster.
- Detach electric circuit housing from red casing

Step 6



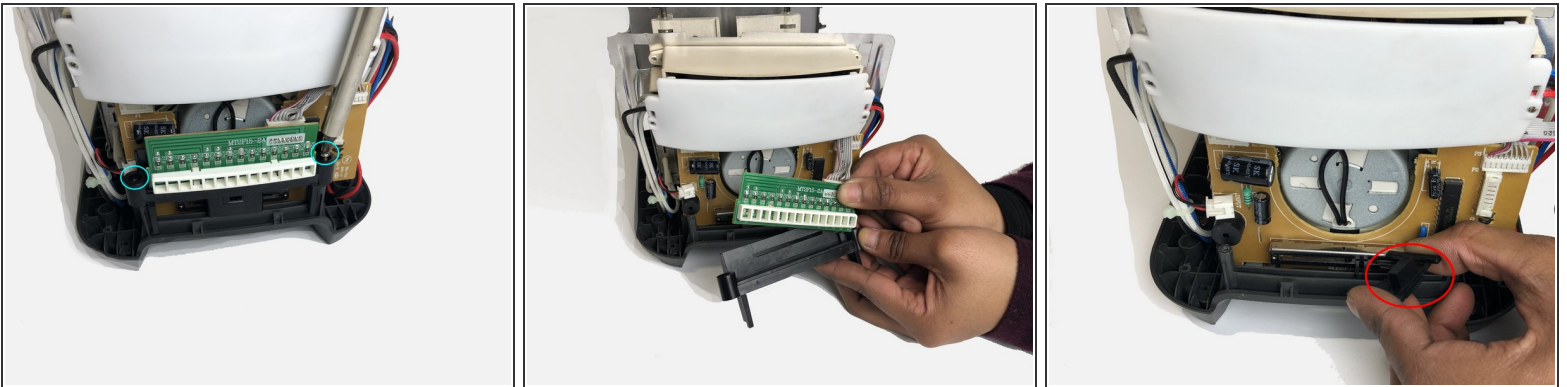
- Firstly, unscrew the four Pan Phillip head screws
- Then snap off the three welded plastic studs to detach the timer knob housing from the red casing

Step 7



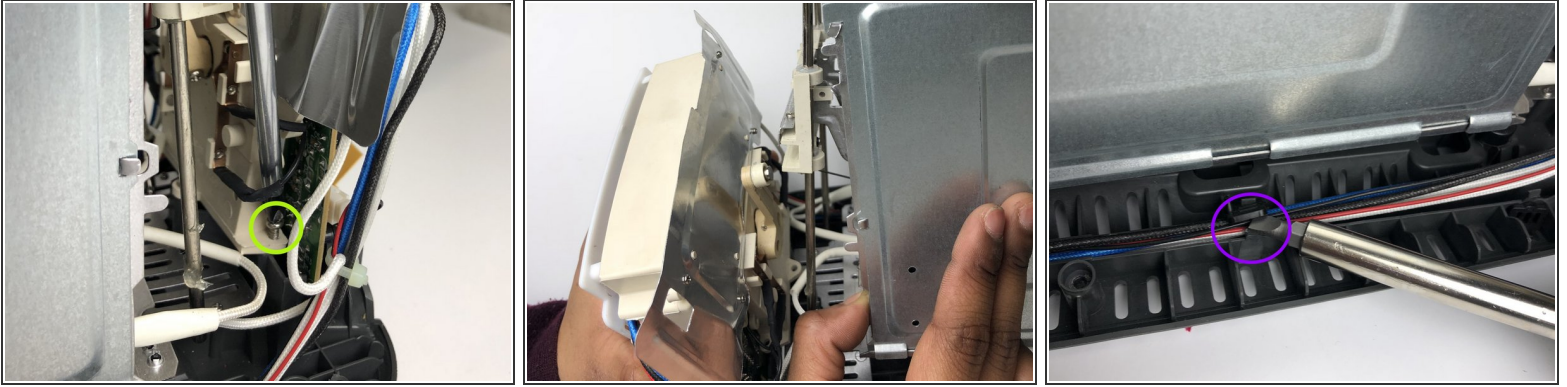
- Unfasten the two Pan Phillip head screws to detach the buttons' housing

Step 8



- Note: There are two housings attach to both side of the interior body of the toaster.
- Remove the two Pan Phillip head screws to detach the circuit board from the heat controller housing.
- Then, remove the slider as well.

Step 9



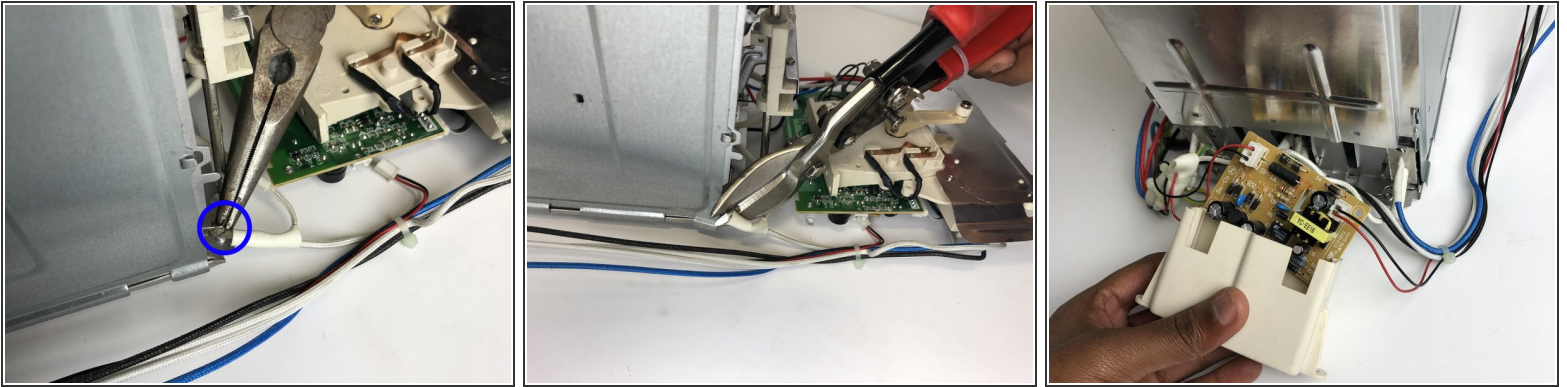
- Remove the circuit board housing for the heat controller from the interior body of the toaster by unscrewing two Pan Phillip head screws
- Remove the cable fasteners using a flat head screw driver

Step 10



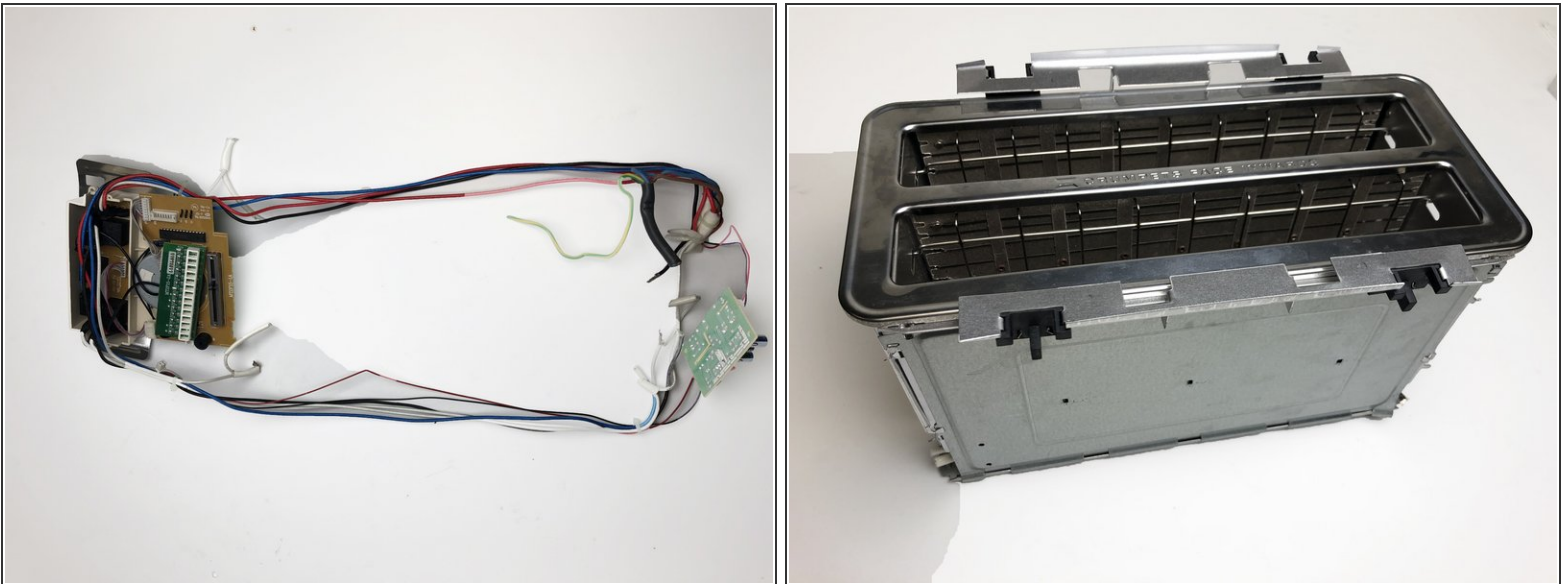
- Separate the interior body of the toaster from the bottom cover.
- Remove the screw caps
- Unscrew the two Pan Phillip head screws to detach the aluminium vent

Step 11



- Use pliers to break apart the welded wires from the interior body.
- Snip off the rest of the wires still attached to the interior body using a wire cutter
- Remove the circuit board from its housing

Step 12



- Separate the electric components from the interior body

Step 13 — Components of the Toaster Teardown



● Insert wisdom here.