



# Television Coaxial Connector Replacement

The cable connector was pulled out of the back of the TV, disassembled and repaired.

Written By: brant



# INTRODUCTION

I've repaired this problem several times using this method and it works well.



## TOOLS:

- [Phillips #00 Screwdriver](#) (1)
  - [Large Needle Nose Pliers](#) (1)
  - [Soldering Iron](#) (1)
-

## Step 1 — Coaxial Connector



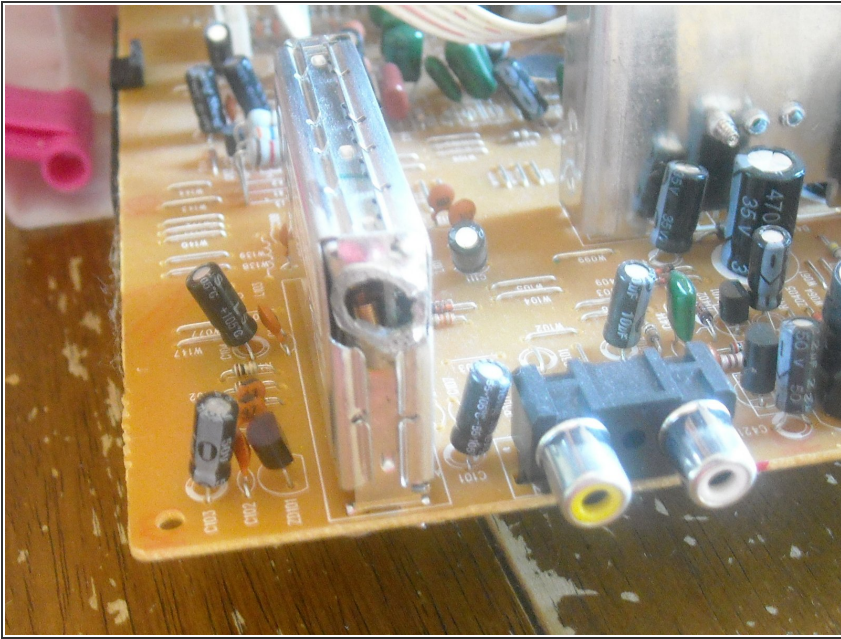
- Kids pulled the cable connector off the back of the hello kitty TV

## Step 2



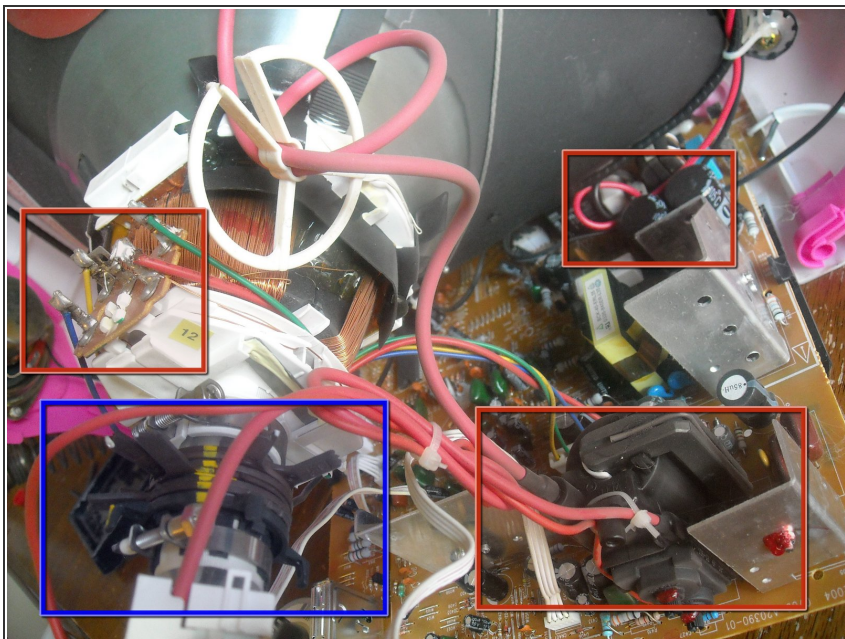
- Remove screws from back, there's 5 in this case circled in red.
- Notice the parts container highlighted in orange always a good idea for screws.
- Cookie circled in pink for good measure.

### Step 3



- assess damaged area once cover is off.

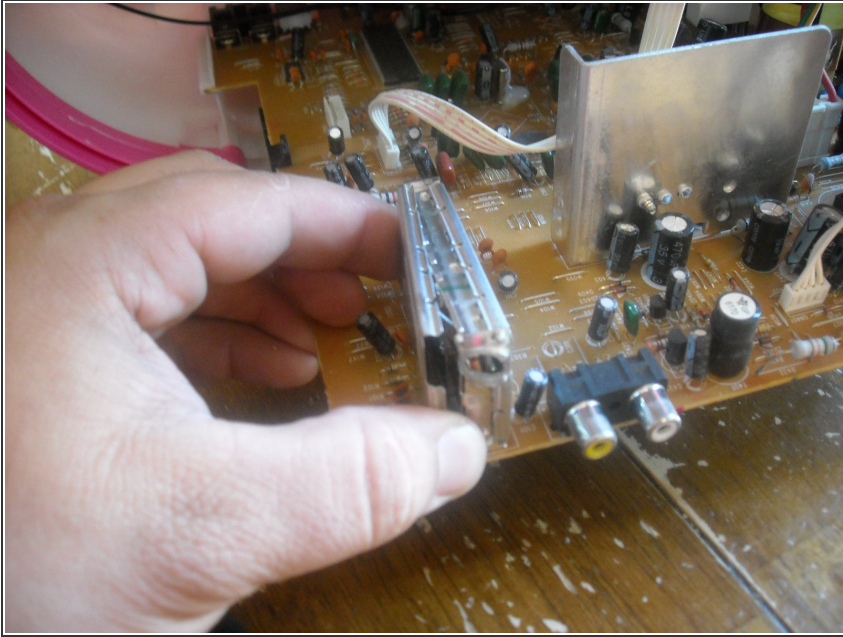
## Step 4



⚠ Beware the danger areas, Capacitors (especially big ones) can hold a charge for months, enough to throw you across the room and melt tools.

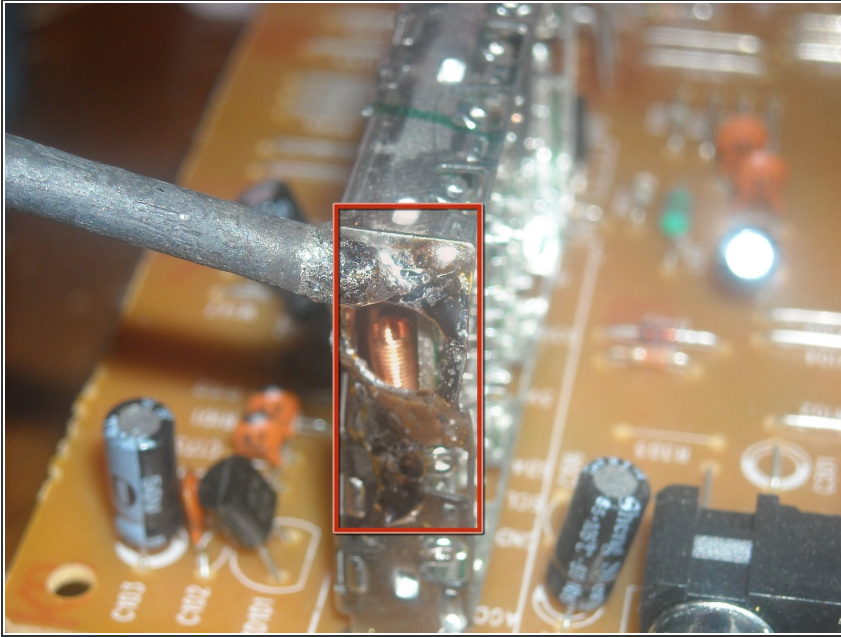
- High voltage areas are outlined in red.
- Delicate sensitive areas outlined in blue.

## Step 5



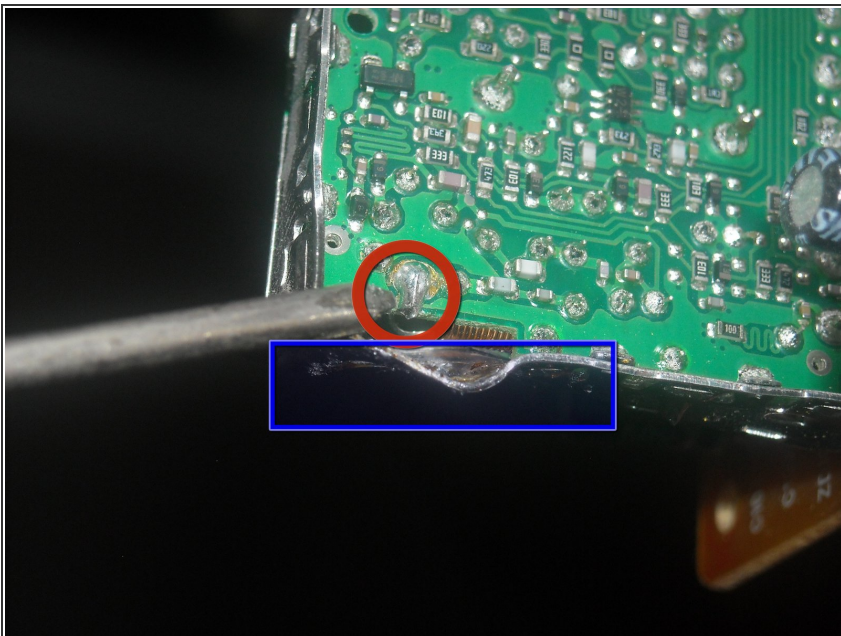
- remove both covers on video input box, use a small prying tool if necessary, but you should be able to remove them by hand as seen here.

## Step 6



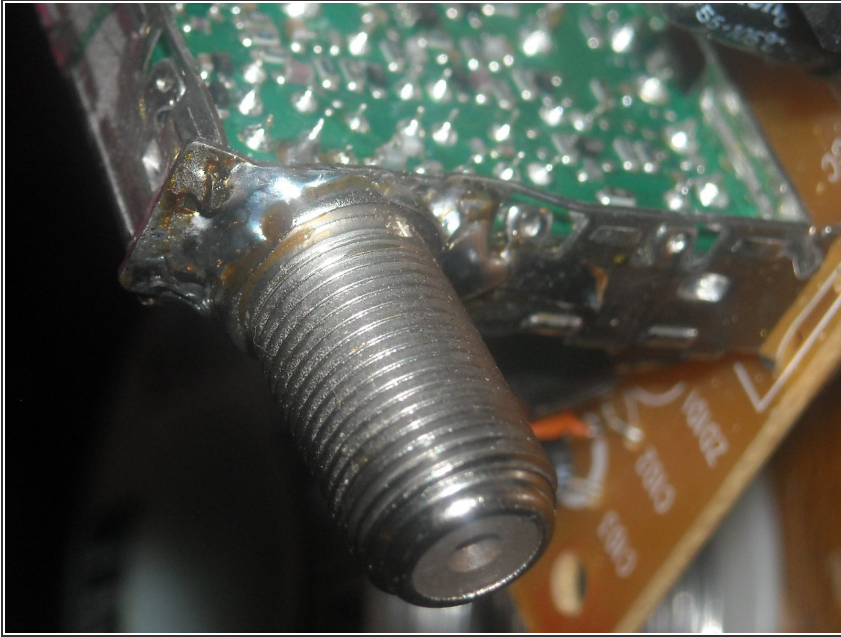
- Use a soldering iron, and solder sucker to remove excess solder from the connector area. You can also use solder-absorbing braided wick.

## Step 7



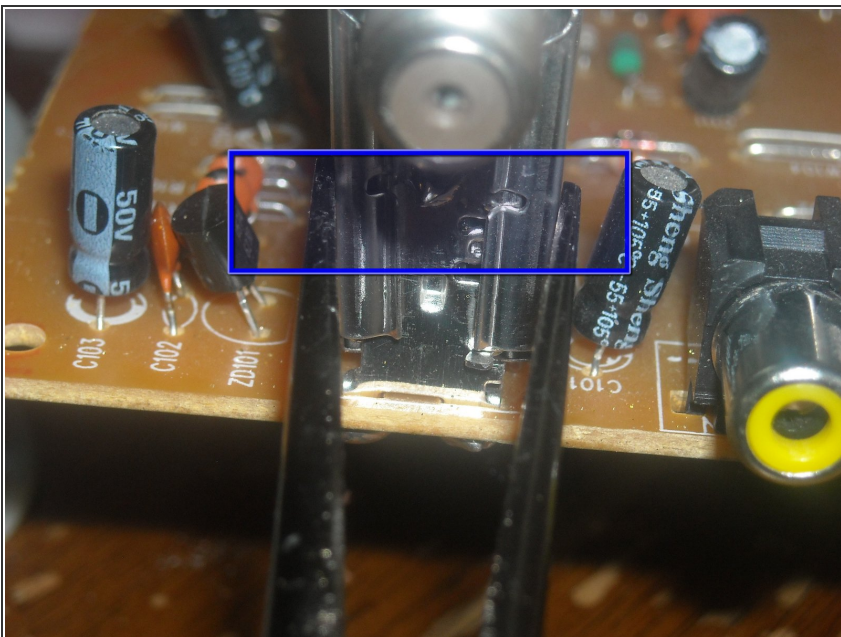
- identify, where the centre pin connector was ripped from the board.
- Use needle-nose pliers to straighten out the tin bracket as much as possible. It does not need to be perfect, but this helps with the alignment of the connector to the back of the tv cover.

## Step 8



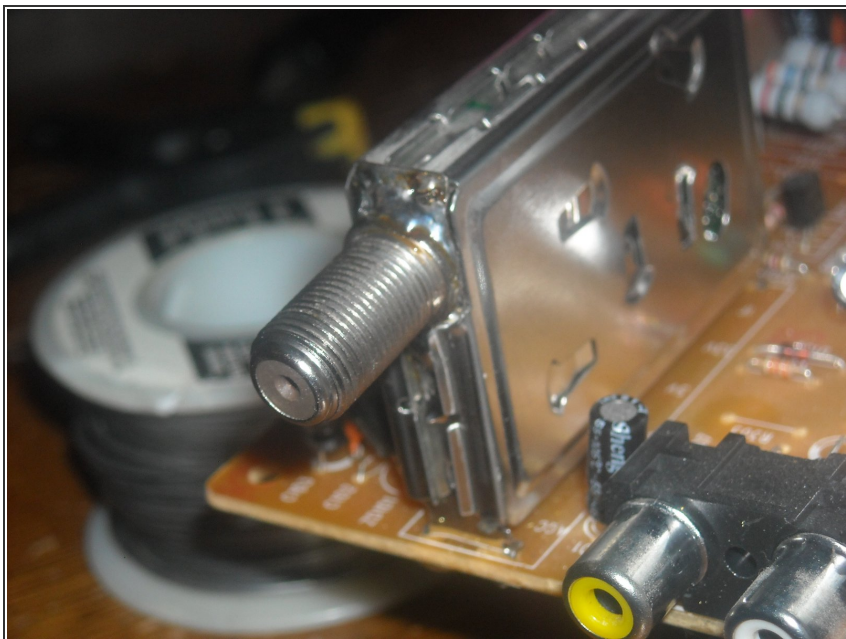
- Align the connector, ensuring the center pin can reach the spot on the board where it needs to be re-connected.
- Solder the barrel of the connector to the metal bracket first, try not to let it get too hot. You may want to use a solder gun with dual heat of at least 50 watts for this part.
- When that's done don't forget to solder the center pin to the board using as little solder as possible, to ensure there's no grounding to the metal cover.

## Step 9



- Re-seat both covers using needle nose pliers to ensure they're seated properly.

## Step 10



- Carefully reconnect the coax jack.

## Step 11



- Carefully replace the plastic cover. Replace cover screws.
- ⓘ Repairing is more environmentally responsible than disposing of a TV in a landfill. You are saving the environment from the Lead (Pb) glass from the rear of the CRT and Barium (Ba) glass in front screen.
- ⓘ There is very little danger of the CRT imploding or cracking if you use common sense, they are built for shipping and rough handling. The cadmium in the screen is unlikely to escape even during breakage, and is not much of an environmental hazard.

To reassemble your device, follow these instructions in reverse order.