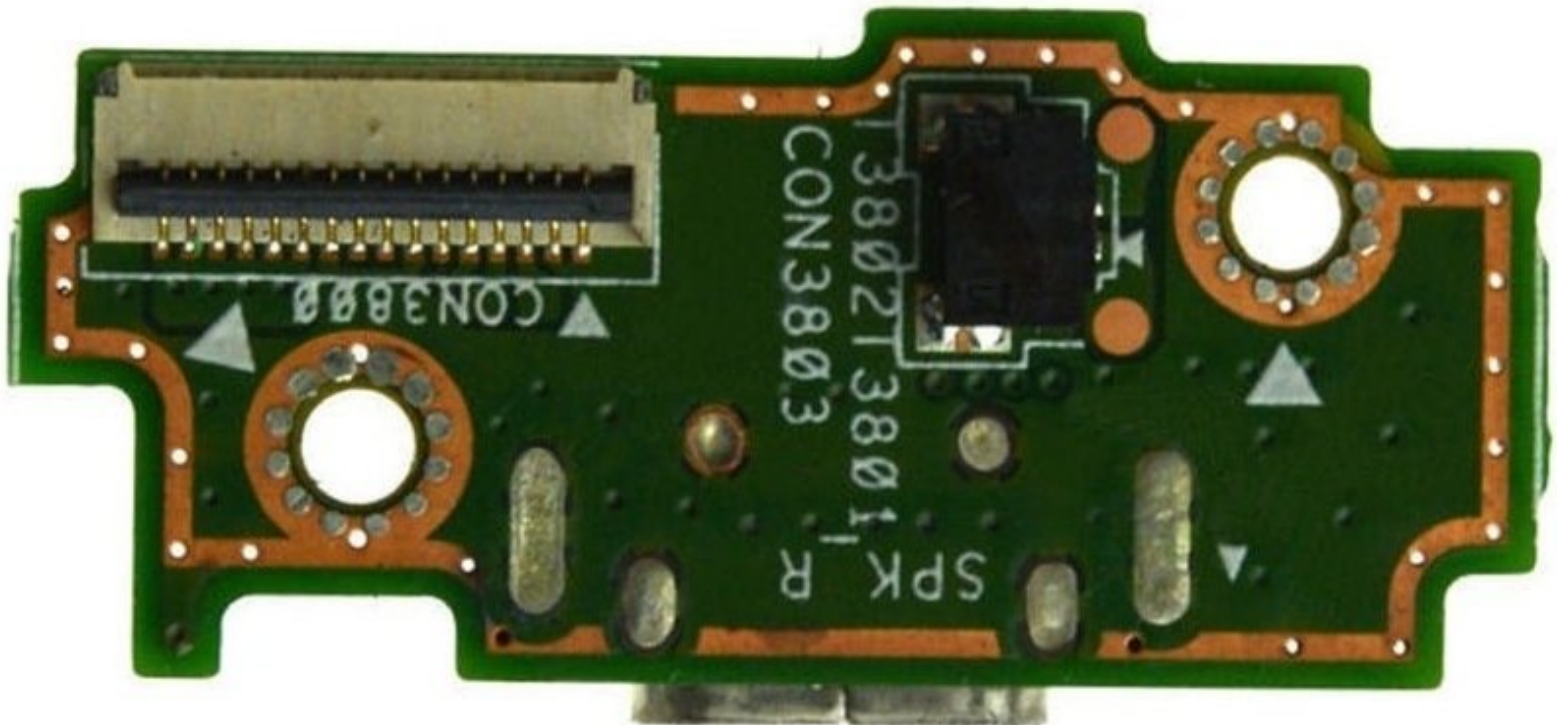




Tesco hudl2 Charge port Replacement

Replace your charge port if the socket is broken. However, if the socket looks intact and the tablet won't charge, it may be a motherboard fault.

Written By: Tim





PARTS:

- [hudl2 Charging Port](#) (1)
-

Step 1 — Open the case



⚠ Take your time!

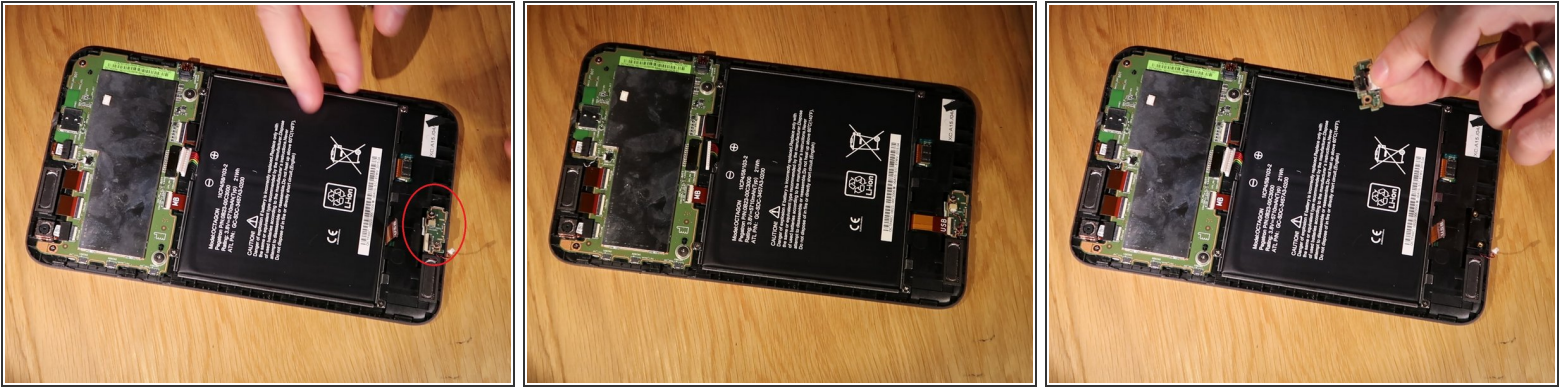
- Use a guitar pick, although some have successfully used a fingernail. Don't use a screwdriver as you will damage the case.
- Start at one corner and carefully insert your tool, working it along the seam until you hear a click and the case starts to come apart.
- Carry on working your way around the case. Be very careful near the buttons.
- Eventually the rear case will come away. There aren't any wires attached to the rear case, it just lifts off.
- When it's time to reassemble, clip the rear cover back on carefully, making sure to fit the side with the buttons first and being careful to ensure they are positioned correctly.

Step 2



- This is what you will see once the rear case is removed.

Step 3 — Replace the charging port



- Carefully peel off the black sticky tape and set it aside.
- ⚠ Don't damage the twisted wire leading to the speaker.
- Unscrew the two screws holding the port in place.
- Remove the two pin speaker plug by moving it gently from side to side until it comes out of its socket.
- Use a spudger to flip open the latch and then withdraw the flat cable.
- Lift out the board and replace with a new one. Reattach the black sticky tape.