



Texas Instruments TI-30 XS Multiview Battery Replacement

This guide will show you how to replace the battery on the TI-30 XS MultiView calculator.

Written By: Nancy Ruiz



INTRODUCTION

This guide will teach you how to remove and replace the battery to the TI-30XS Multiview. Be sure to note the orientation of the battery for when a new one is being put in.



TOOLS:

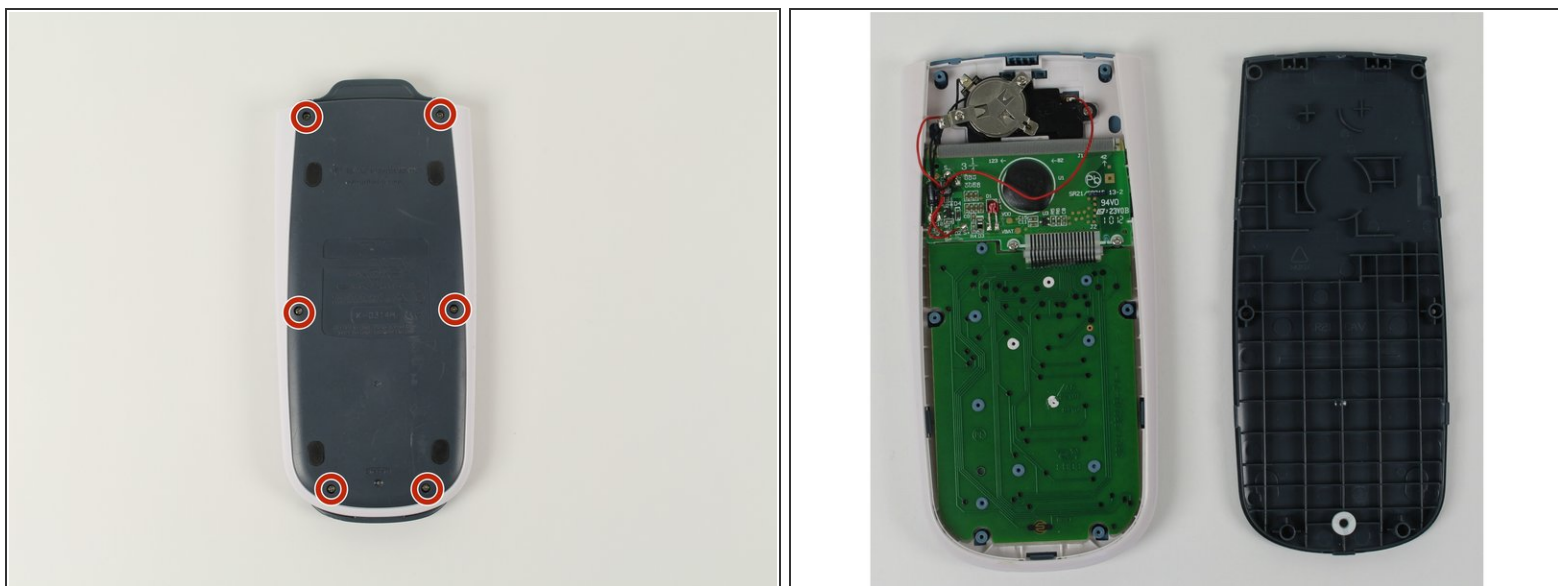
- [Spudger](#) (1)
- [Phillips #00 Screwdriver](#) (1)



PARTS:

- [CR2032 Lithium Battery](#) (1)

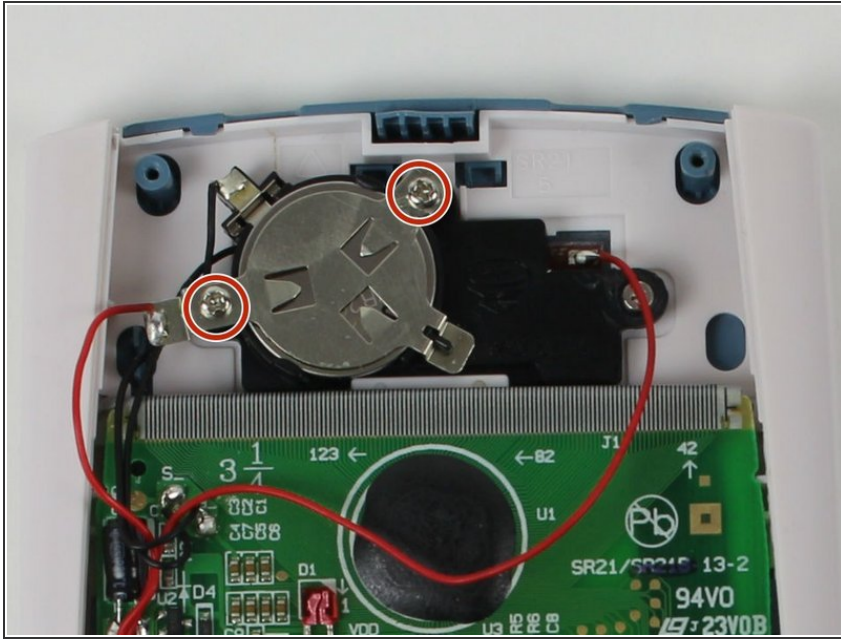
Step 1 — Open the device



⚠ If the screw is not turning, do not force it. This can strip the screw. See the [How to Remove a Stripped Screw](#) guide if the screw is already stripped.

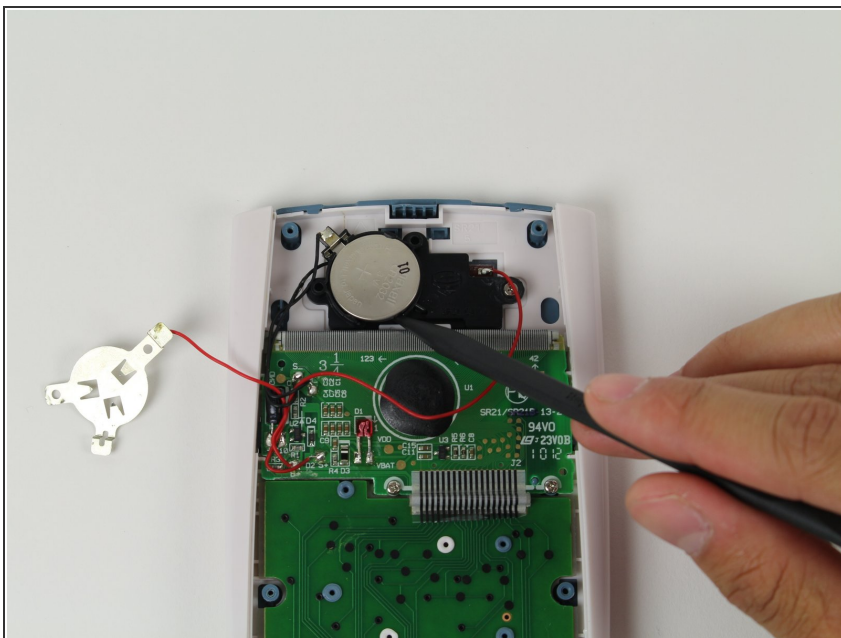
- Using the #00 screwdriver, unscrew the six, 6mm Phillips screws.
- Use the spudger to pry into the space between the blue back cover and the white body to take off the back cover.

Step 2 — Open the battery compartment



- Using the #00 Phillips screwdriver unscrew the two, 3mm Phillips screws located near the top of the calculator.
- Lift the metal plate from the battery and set it to the side.

Step 3 — Eject the battery



- Use the spudger to lift the battery up from the black holder.

Step 4 — Finish up



- Put the new CR2032 battery in. **Never** insert a different type of battery!
- Reverse the steps 2 and 1.

To reassemble your device, follow these instructions in reverse order.