



Texas Instruments TI-5130 Power Cord Replacement

Follow this guide to replace the power cord on the TI-5130.

Written By: Shannon Perkins



INTRODUCTION

Power cords can become damaged due to pinching or cutting of the cord. Follow this guide to replace the power cord.



TOOLS:

- [Phillips #1 Screwdriver](#) (1)
- [Wire stripper/crimping tool](#) (1)
- [Wire cutters/side cutters](#) (1)



PARTS:

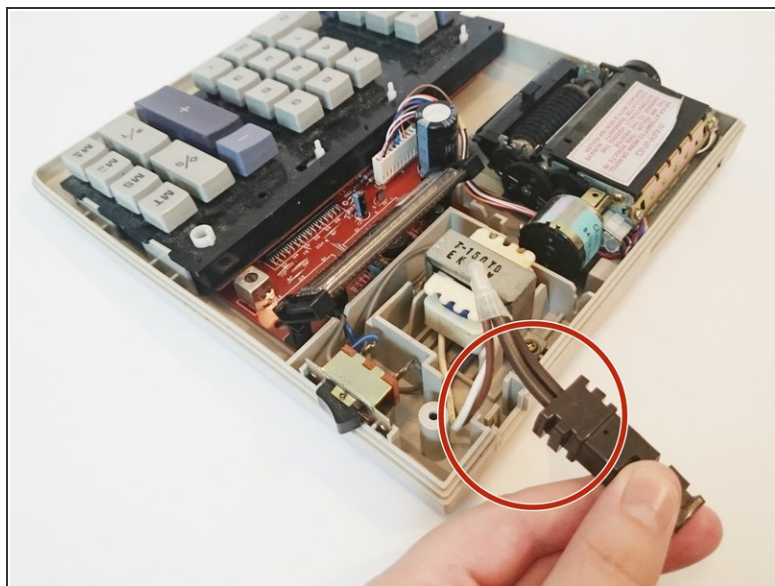
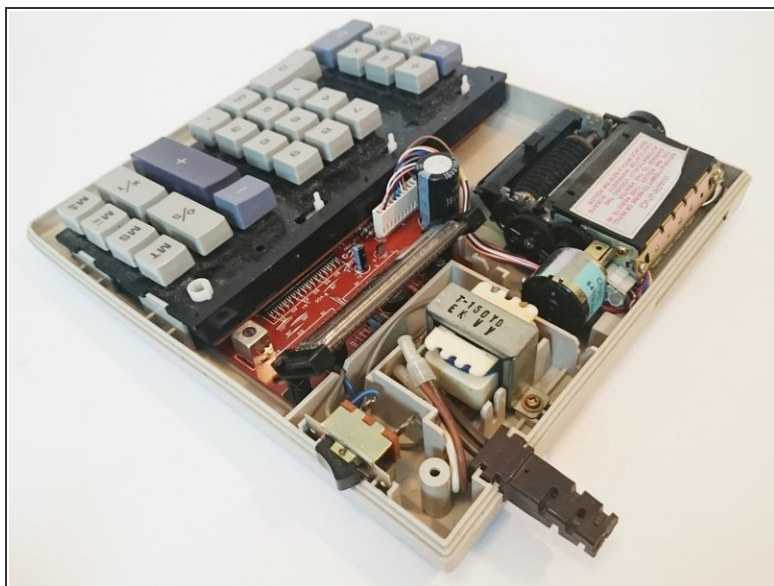
- [TI-5130 Power Cord](#) (1)
- [wire cap](#) (2)

Step 1 — Power Cord



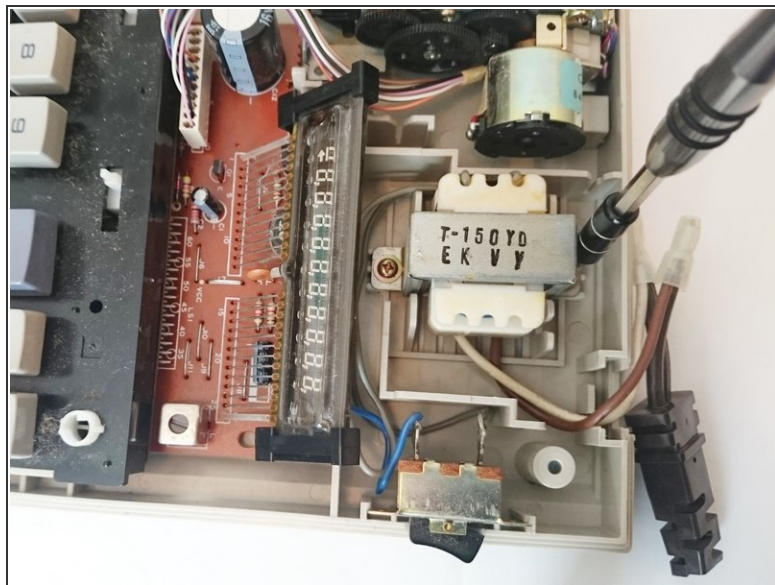
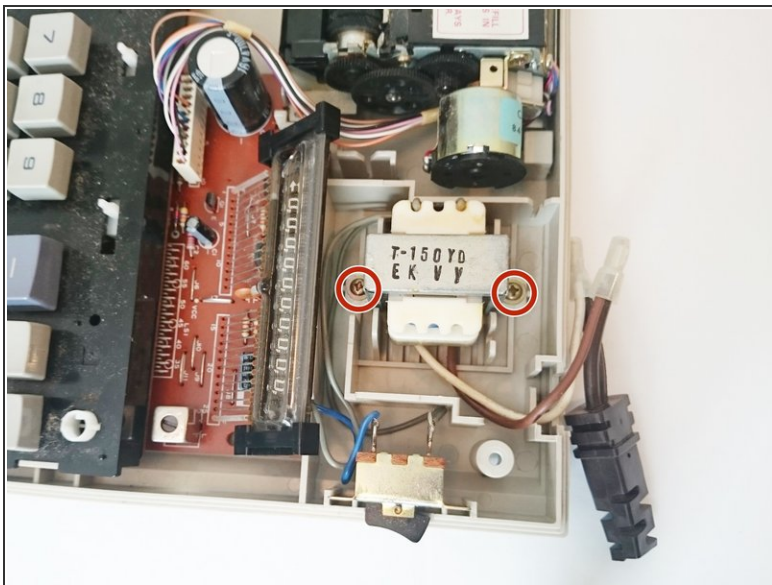
- Flip the calculator over and remove the 4 main 10mm screws with a PH1 screwdriver.

Step 2




- Remove the top cover.
- Gently pull up on the power cord to remove it from the back cover.

Step 3

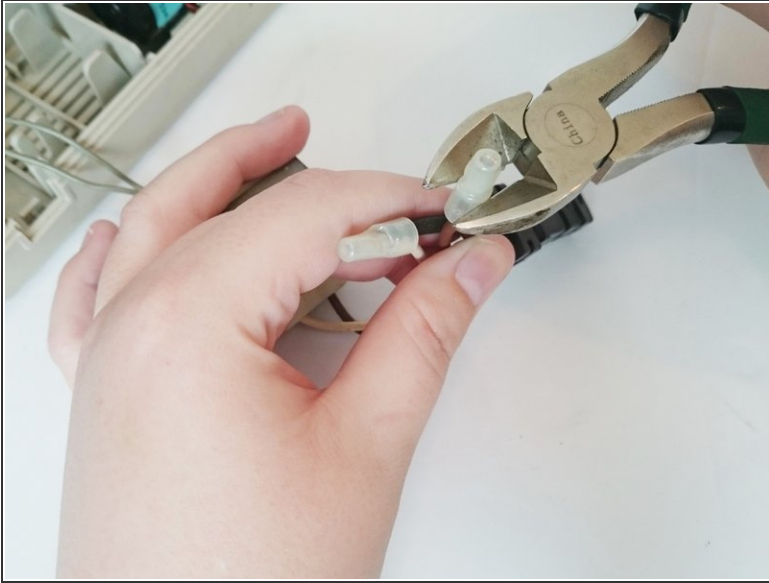


 This step is optional; however it makes it easier to work.

- Using a PH1 screwdriver remove the two 10mm screws that hold down the transformer.
- Gently remove the transformer.

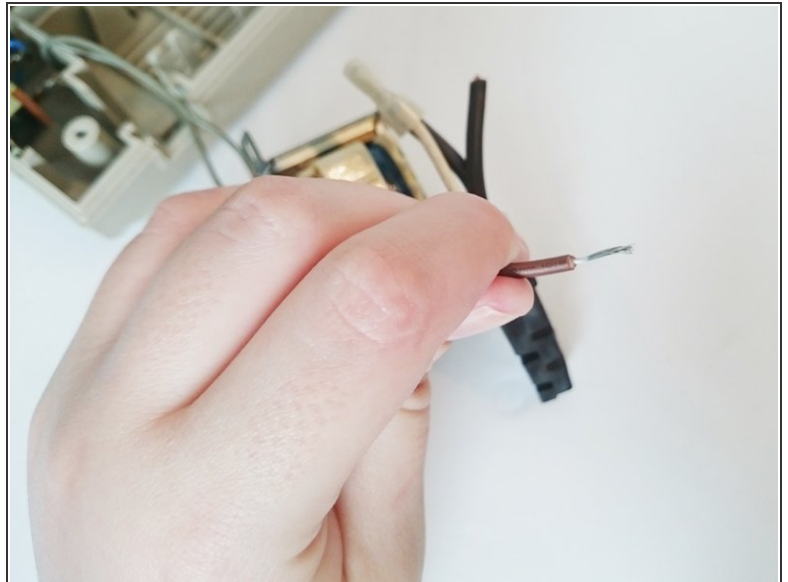
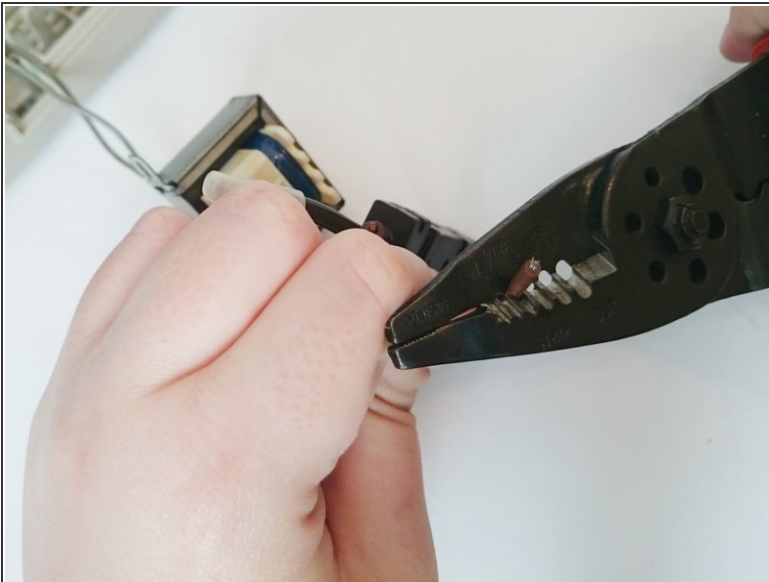
 Make sure that the calculator is not plugged in.

Step 4



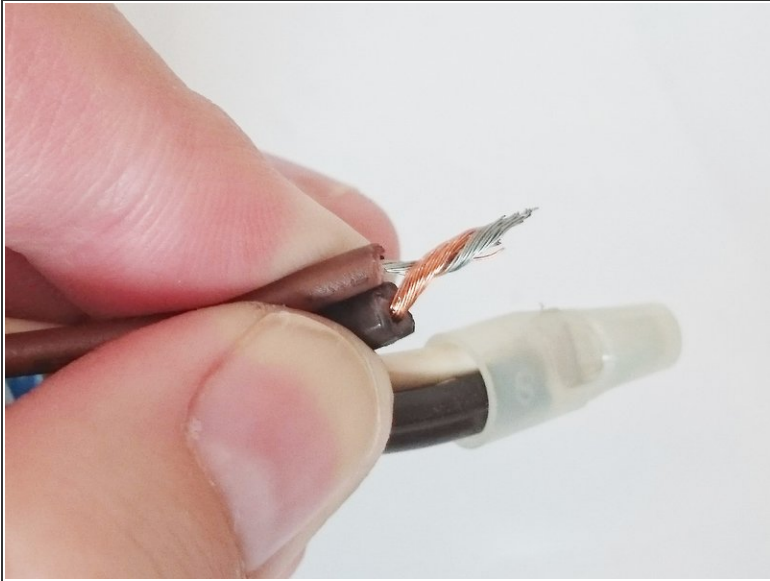
- Use a wire cutter to cut off the white cap and expose the wires. Try to cut close to the tip of the white cap - to leave as much wire as possible.
- ⓘ Note that there are 2 sets of wires connected to the power cord. Do each set of wires separately.

Step 5



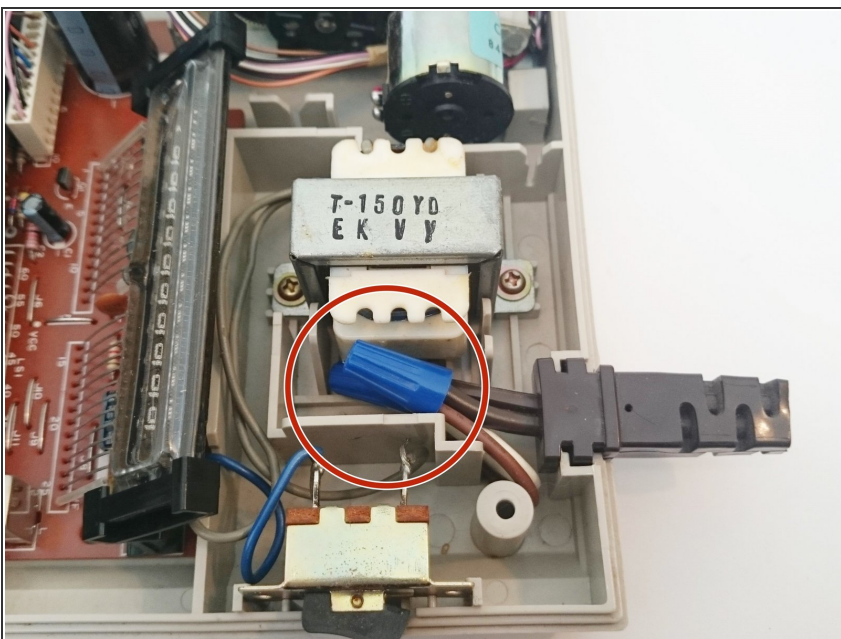
- Use a wire stripper to remove 1/2" of the protective covering on each of the wires.

Step 6



- Twist the exposed section of the 2 wires together.
- Twist a new cap over the exposed wires. Make sure that the cap covers all of the exposed wire.
- Repeat steps 4-6 for the second set of wires.

Step 7



- Replace the transformer and ensure that the new wire caps fit in the space shown.
- Plug in the new power cord and test the calculator before replacing the top cover.

To reassemble your device, follow these instructions in reverse order.