



Texas Instruments TI-80 Button Replacement

This guide will demonstrate the proper procedure for removing and replacing the buttons.

Written By: Calvin



INTRODUCTION

Buttons will sometimes become cracked or damaged, or they may fall out. This guide shows you how to access, remove, and replace the buttons.

TOOLS:

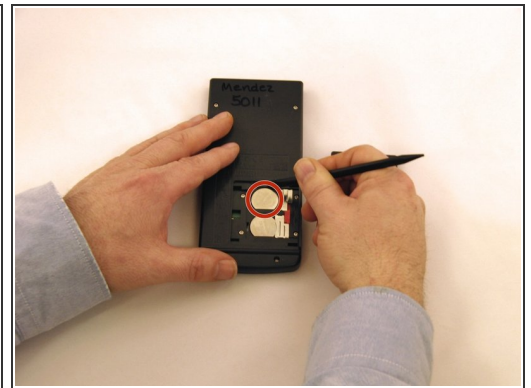
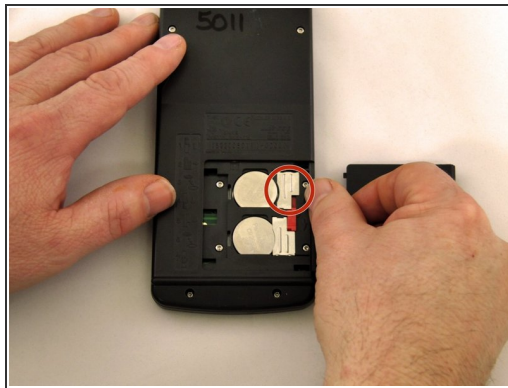
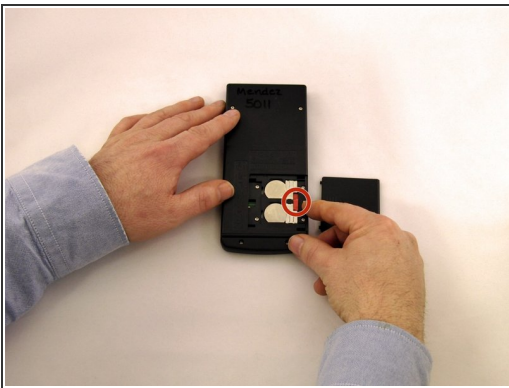
- [Phillips #0 Screwdriver](#) (1)
 - [T6 Torx Screwdriver](#) (1)
 - [iFixit Opening Tools](#) (1)
-

Step 1 — Batteries



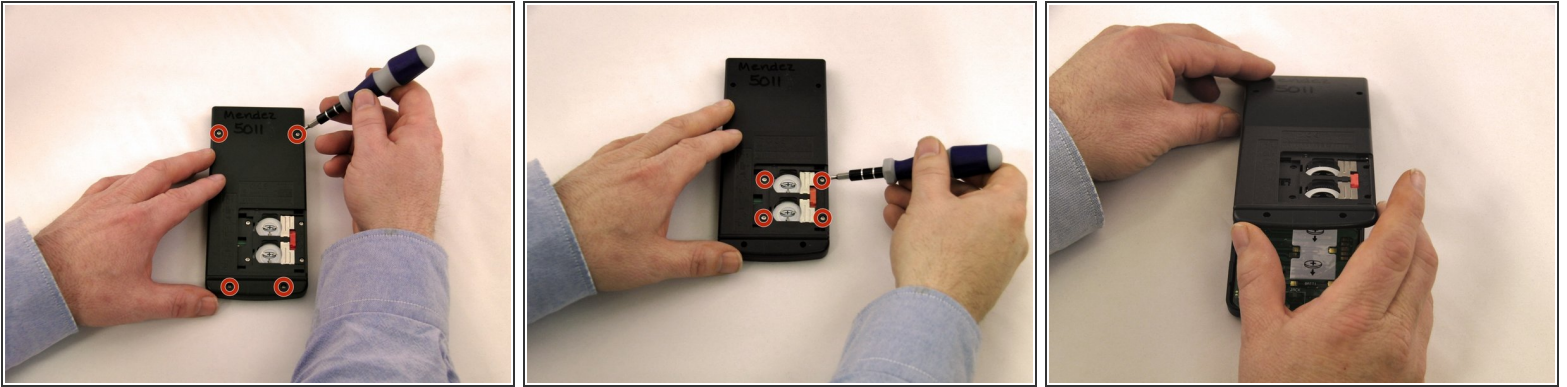
- Locate the battery cover on the back of the case.
- Slide the battery cover to the right to reveal the batteries.

Step 2



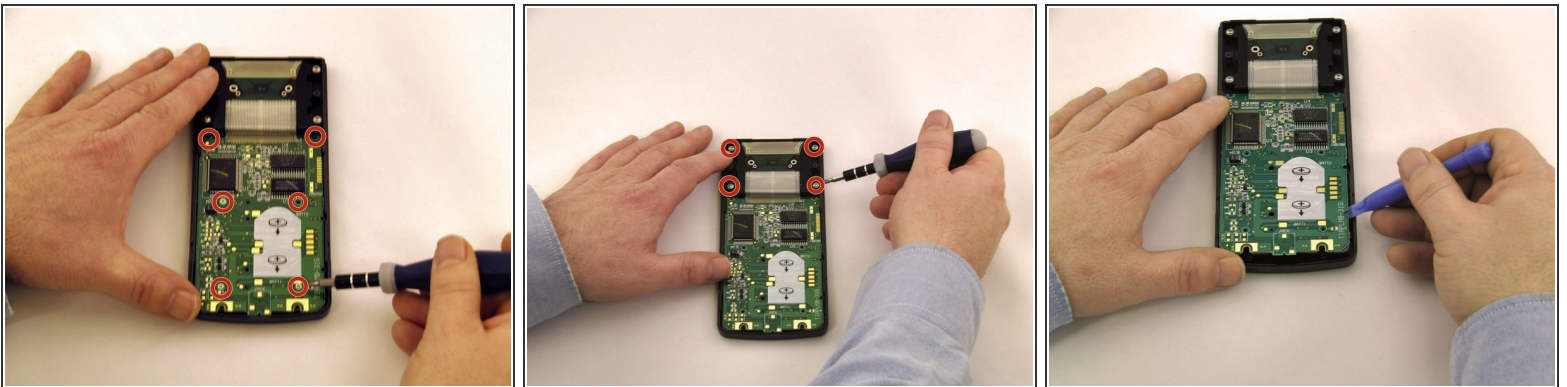
- Slide the red lock up.
 - Slide the metal tab to the right of the bottom battery.
 - Remove the 3-Volt Lithium Coin Cell Battery.
- Slide the red lock down.
 - Slide the metal tab to the right of the top battery.
 - Remove the 3-Volt Lithium Coin Cell Battery.

Step 3 — Back Case



- Using a Torx T-6 star-bit screwdriver, unscrew four 7.38 mm screws from the battery housing.
- Unscrew four 7.15mm screws from the back casing.
- Using the blue plastic opener tool along the seam of the case, pry off from the front casing.
- ⓘ Start prying from the bottom of the calculator, as the case hooks into the top.

Step 4 — Motherboard and Screen



- Using a PH0 screwdriver from the 28-bit driver kit, remove 6 screws: 2 from the top and 4 from the bottom of the motherboard.
- Remove 4 screws from the screen mount using the PH0 bit.
- Using the blue plastic opening tool, pry the motherboard up from the bottom case.
- Using the blue plastic opening tool, pry up the screen from the screen mount.

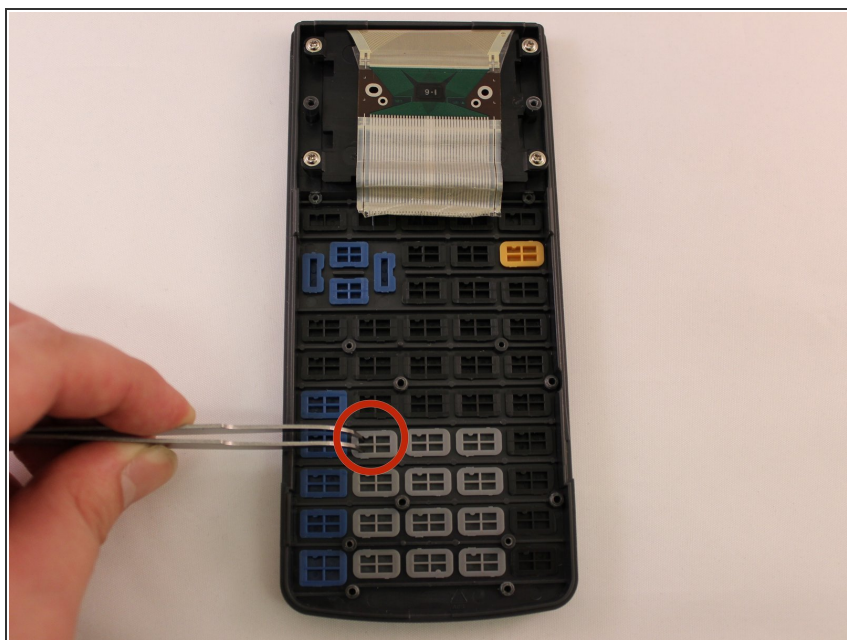
Step 5 — Check Buttons



- Check the back of the buttons for damage or obstructions.
- If obstructions are present, clear them.

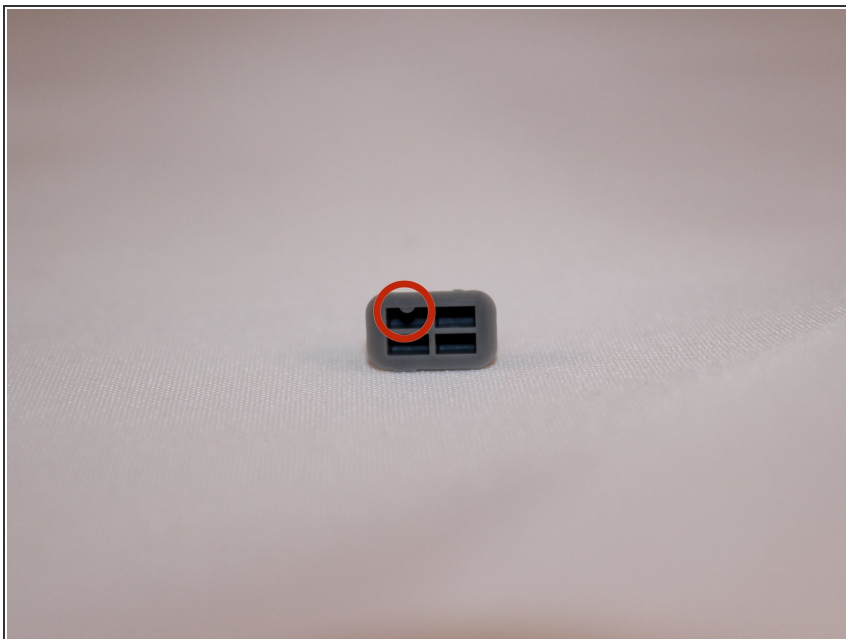
⚠ Do not tilt the calculator, or buttons may fall out.

Step 6 — Replace Buttons



- If a button is damaged, use tweezers to lift the button out of the facing.

Step 7 — Insert new Buttons



- Insert new button, making sure that it is positioned properly.
- ⓘ For all buttons, there is an extrusion in the upper left quadrant when looking at the back of the key. These should be aligned with the top of the calculator.

To reassemble your device, follow these instructions in reverse order.