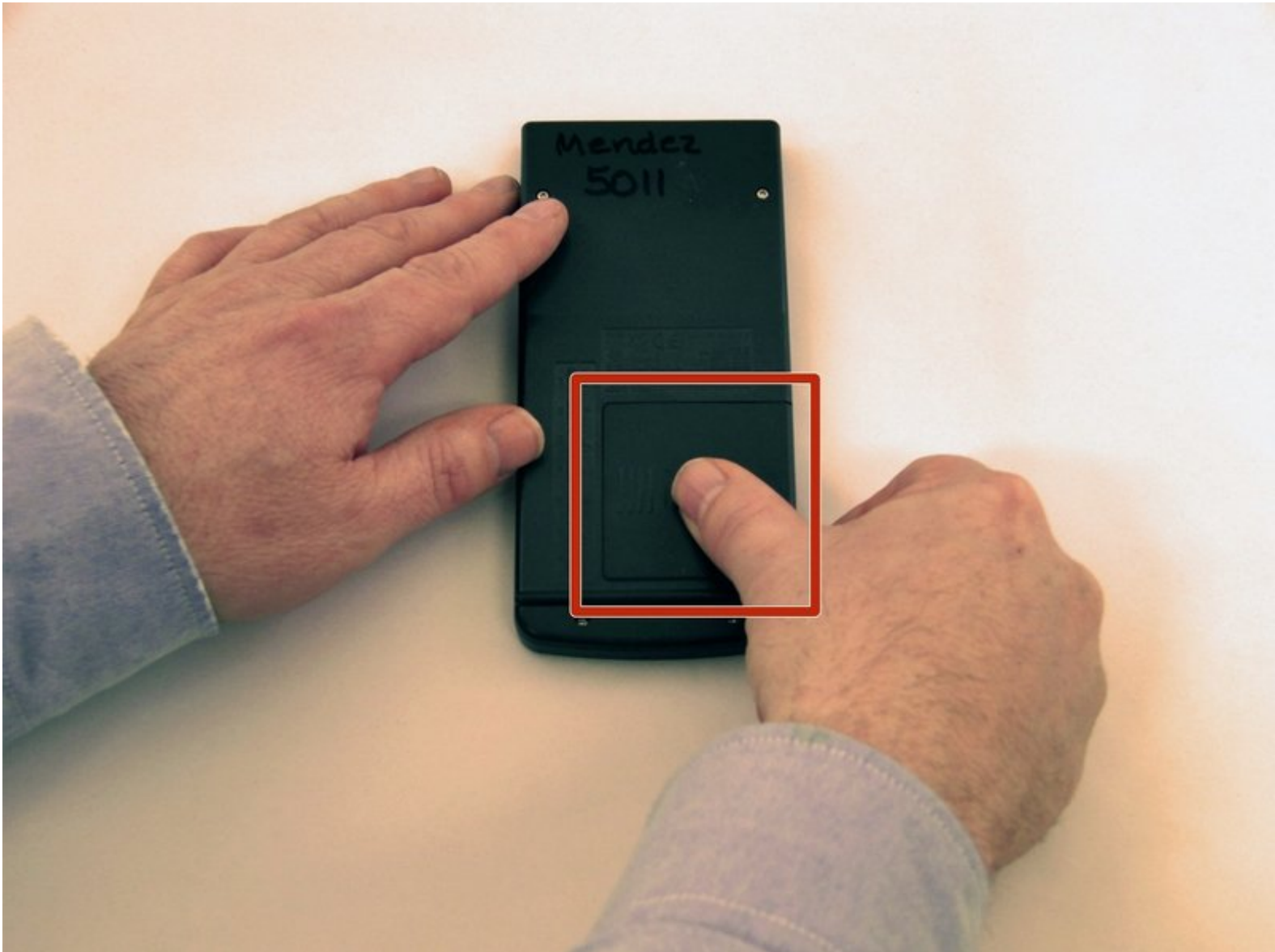




Texas Instruments TI-80 Keyboard Mat Replacement

This guide will show you how to access the keyboard mat and explain what to look for once there.

Written By: brian decater



INTRODUCTION

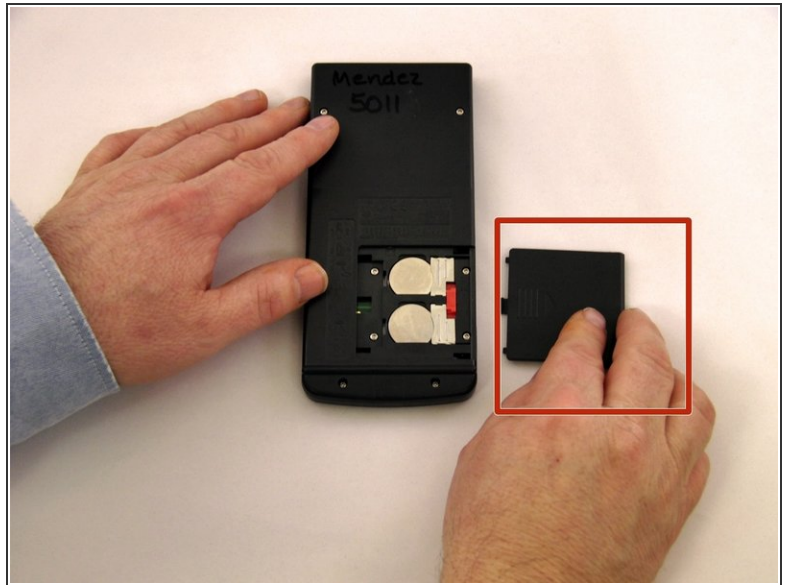
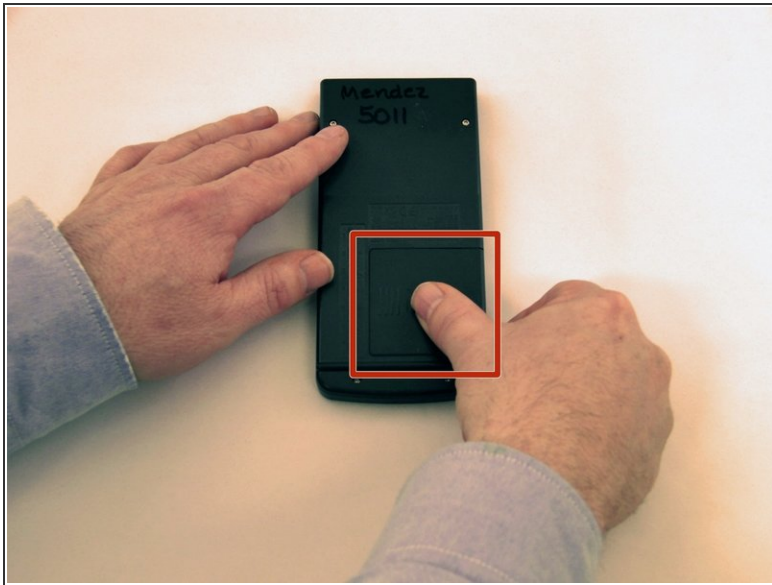
Keyboard mats are occasionally prone to wear and tear. Dirt and debris may also find its way onto the pad. This guide will help you get to the keyboard mat to clean or replace it.



TOOLS:

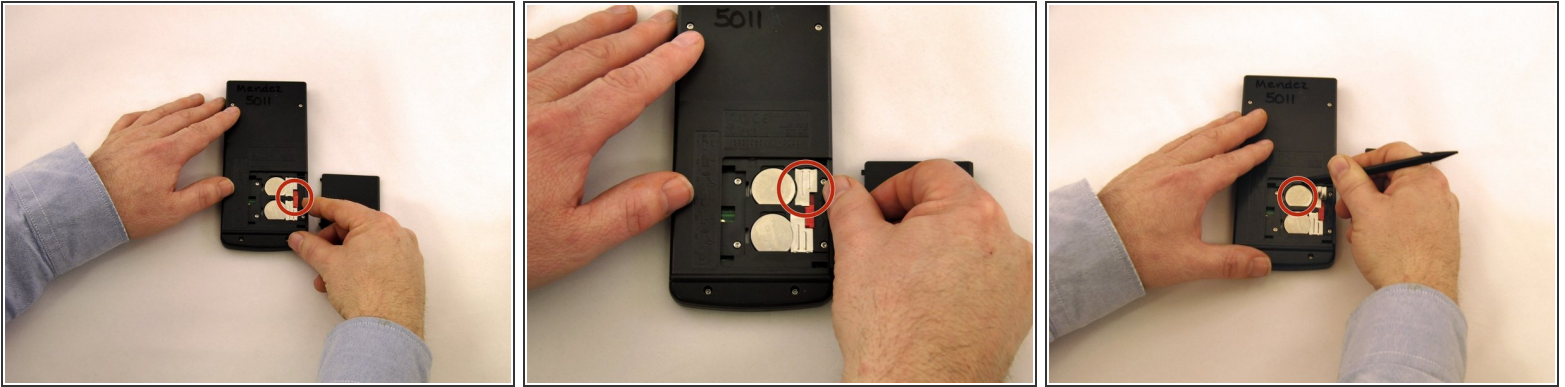
- [Phillips #0 Screwdriver](#) (1)
 - [T6 Torx Screwdriver](#) (1)
 - [iFixit Opening Tools](#) (1)
-

Step 1 — Batteries



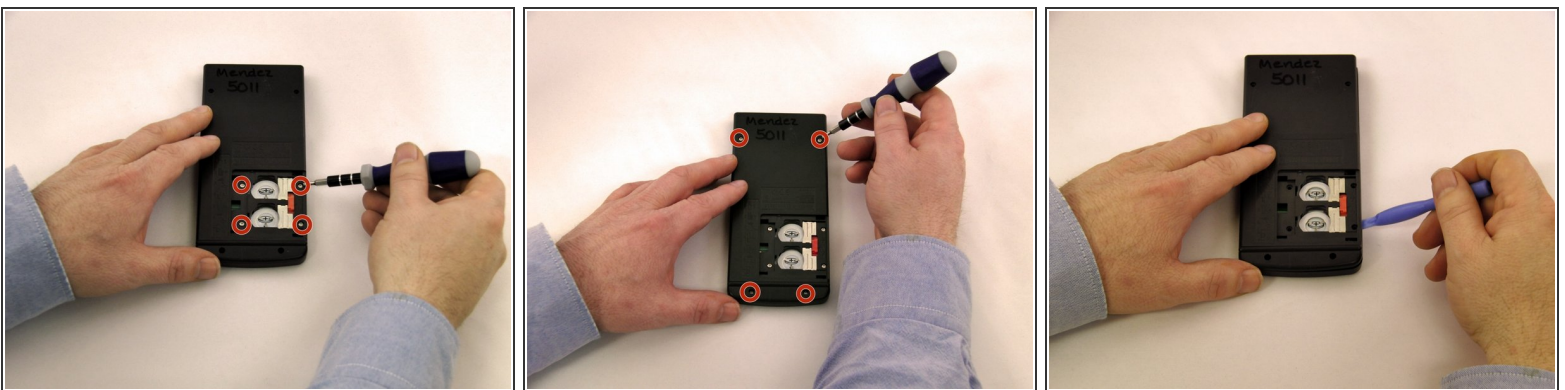
- Locate the battery cover on the back of the case.
- Slide the battery cover to the right to reveal the batteries.


Step 2



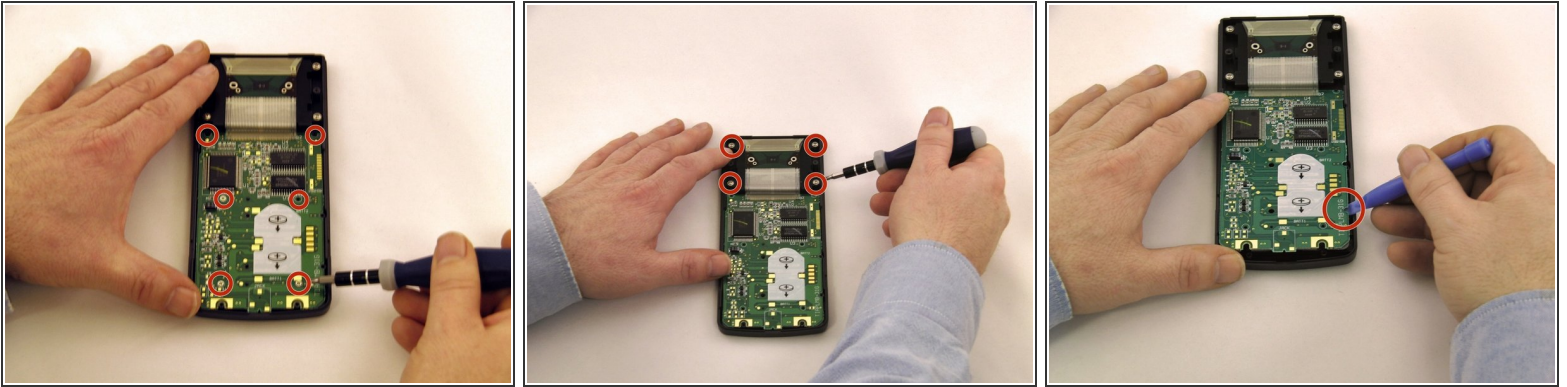
- Slide the red lock down.
- Slide the metal tab of the top battery to the right.
- Remove the first 3-Volt Lithium Coin Cell Battery.
- Slide the red lock up.
- Slide the metal tab of the bottom battery to the right.
- Remove the second 3-Volt Lithium Coin Cell Battery.

Step 3 — Back Case



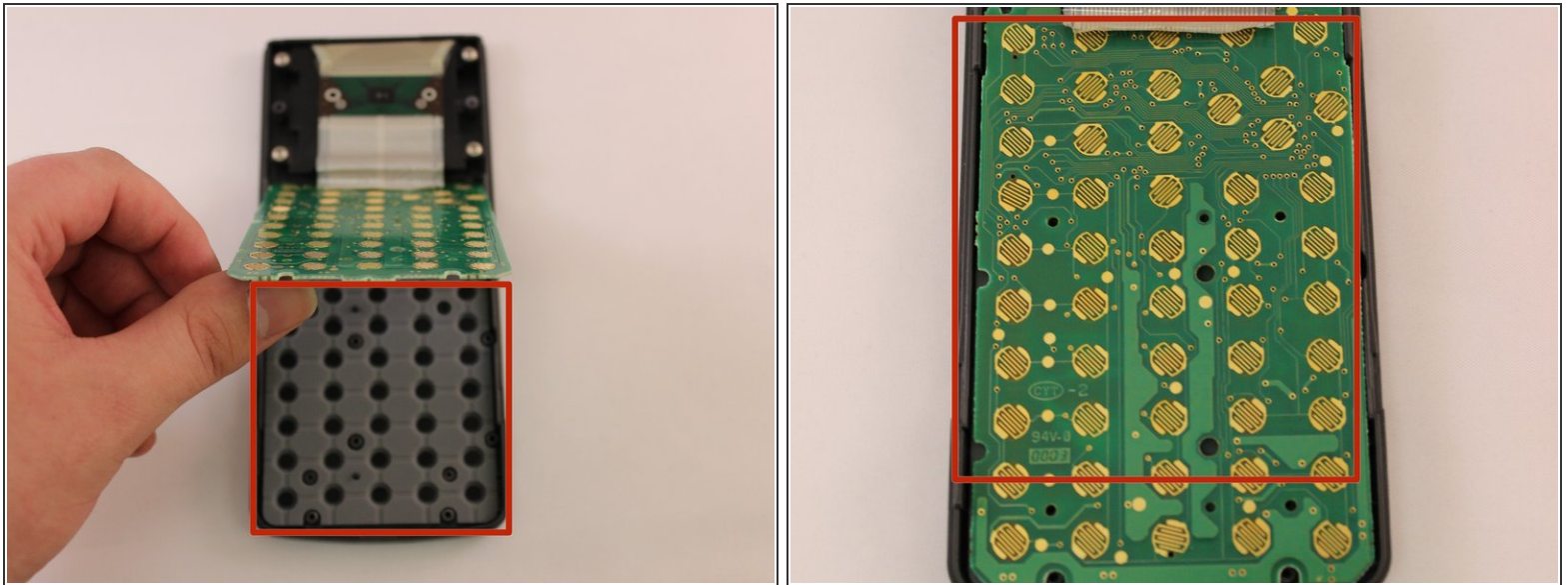
- Use a Torx T-6 star-bit screwdriver to unscrew the four 7.38 mm screws from the battery housing.
- Unscrew the four 7.15mm screws from the back casing.
- Use the blue plastic opener tool along the seam of the case to pry off the front casing.
-  Pry from the bottom of the calculator as the case hooks into the top.

Step 4 — Motherboard and Screen



- Use a PH0 screwdriver from the 28-bit driver kit to remove six screws. (Two from the top and four from the bottom of the Motherboard).
- Use the PH0 screwdriver to remove the four screws from the screen mount.
- Use the blue plastic opening tool to pry the Motherboard up from the bottom case.
- Use the blue plastic opening tool to pry up screen from the screen mount.

Step 5 — Check keyboard mat



- Check the rubber mat for damage or obstruction at the location of non-functioning buttons.
- Flip the mat over to assess dirt and damage.
- ⓘ Replace the mat if it is damaged.
- ⓘ Clean off the back of the Motherboard as necessary. The mat lies on top, so dirt and debris may build up. Repeat cleaning as needed.

To reassemble your device, follow these instructions in reverse order.