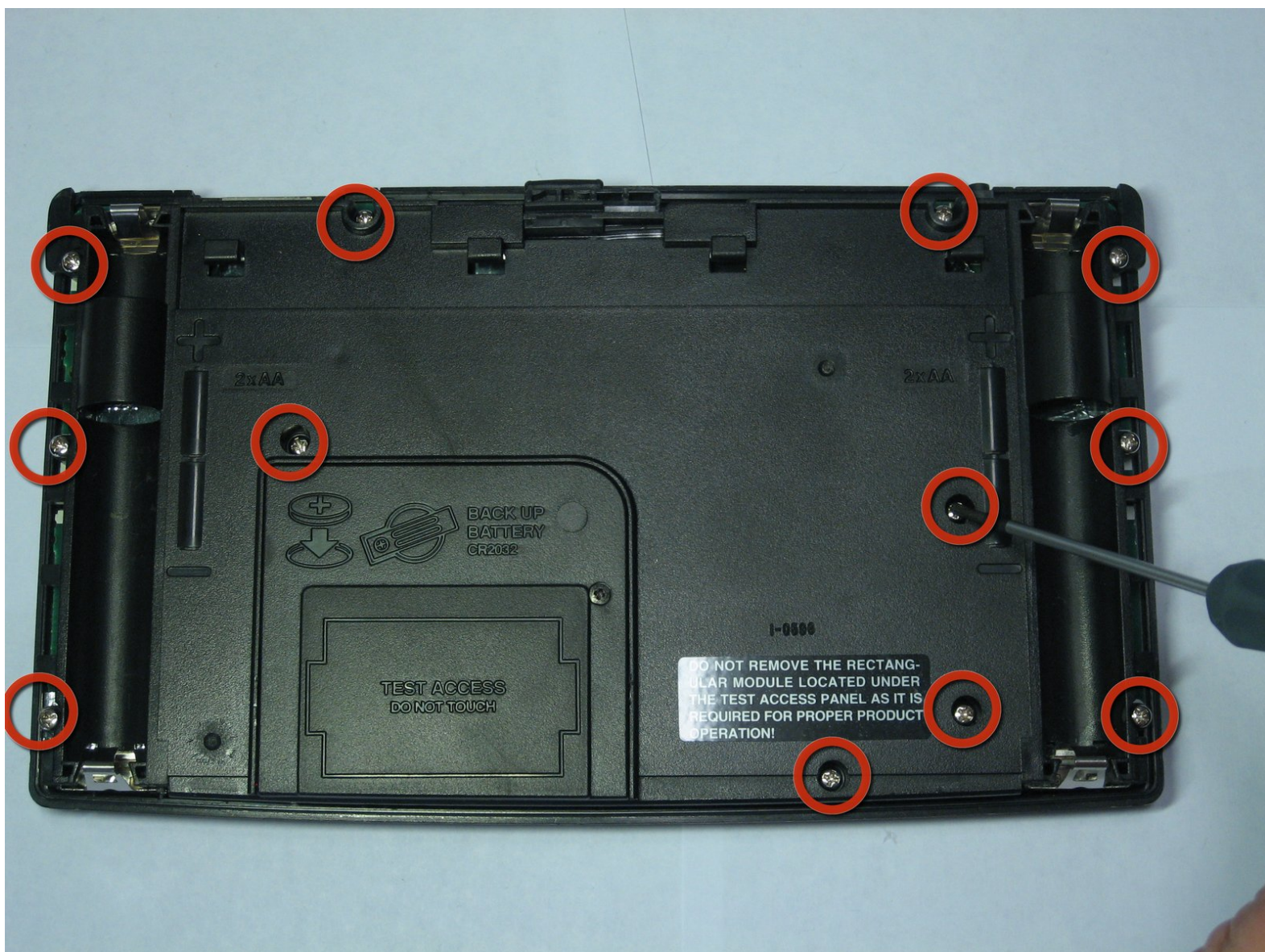




# Texas Instruments TI-92 Back Case Disassembly

In this guide we will be showing how to remove the TI-92's back case to get to inner components.

Written By: Daniel Maldonado



---

## INTRODUCTION

In this guide we will be showing how to remove the TI-92's back case to get to inner components.

---

### TOOLS:

- [Phillips #00 Screwdriver](#) (1)
  - [iFixit Opening Tools](#) (1)
-

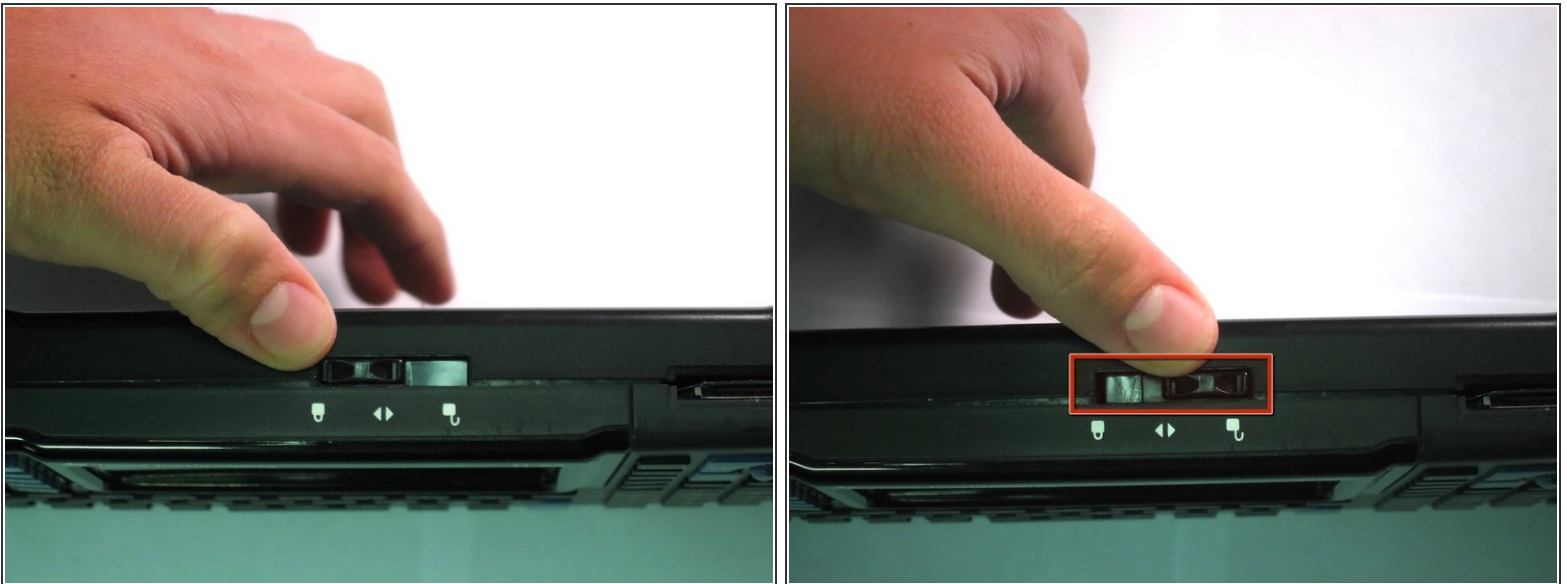
## Step 1 — Back Cover



**i** The first step to any repair operation is to remove the front cover.

- Grab the back of the calculator with one hand and the cover with the other.
- Pull the cover off from one of the sides for easy removal.

## Step 2



- Orientate the calculator with the top facing towards you.
- Slide the locking tab, found on the top part of the calculator, to the unlock position.

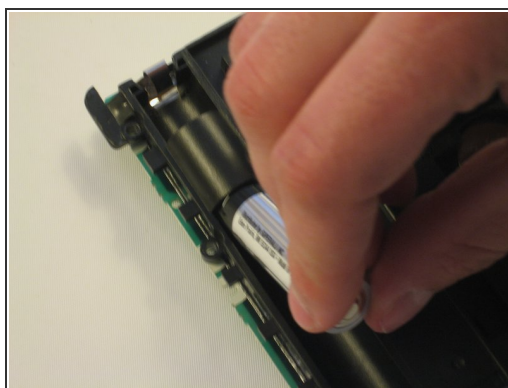


## Step 3



- "Locking Tab"
- To remove the back cover, slide the cover away from the locking tab towards the bottom of the calculator until the cover no longer slides.
- Then with the front of the calculator facing down, pull up on the back cover.
- The calculator should now be orientated with the front facing down, as shown in picture 2.

## Step 4 — Batteries

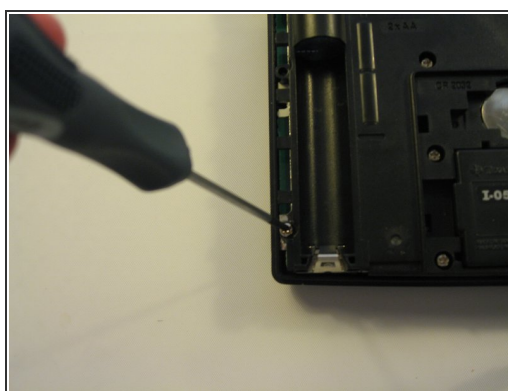


- i** The Batteries are now exposed and the calculator is face down with the back towards you.

  - Remove the bottom batteries by pressing the battery towards you while pulling it out from the far end.
- i** If you can not do the previous step with your finger try using a flat ended tool such as an Ipod opening tool.

  - After the bottom battery has been removed push or slide the other( *top*) battery towards you until it is fully exposed in the battery slot.
  - Now simply remove the battery.

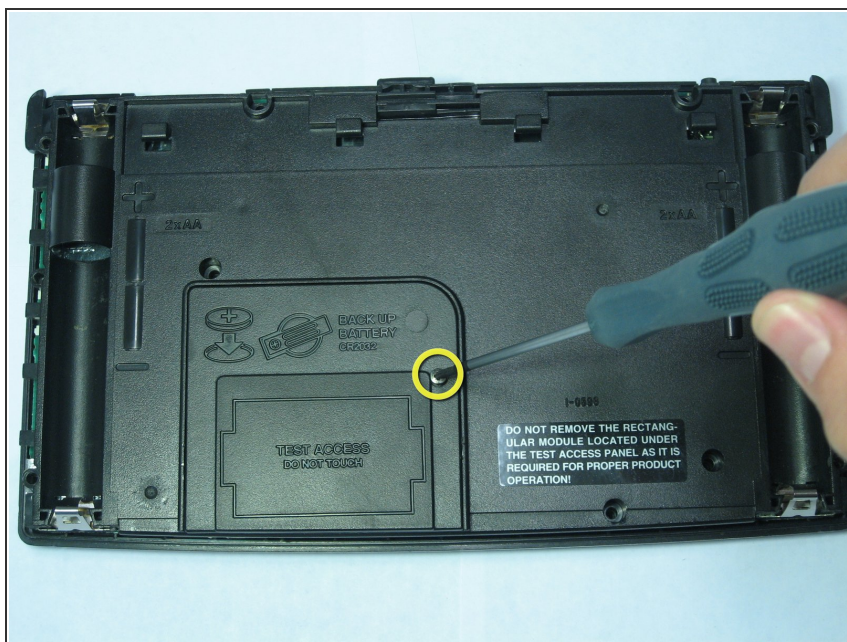
## Step 5 — Texas Instruments TI-92 Back Case Disassembly



- Using a Philips Screwdriver #00 unscrew the twelve 11.8mm screws shown in the picture and located on the back of the calculator.

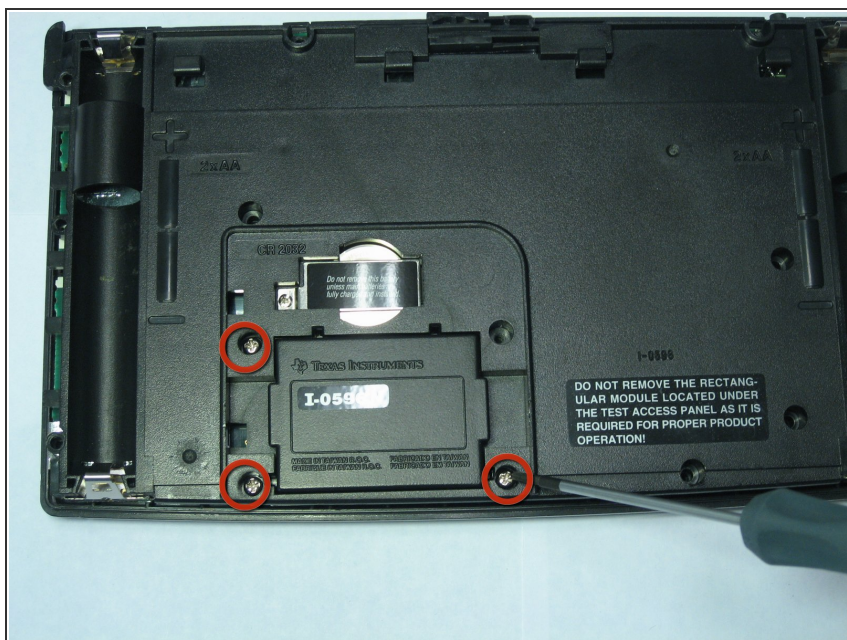


## Step 6



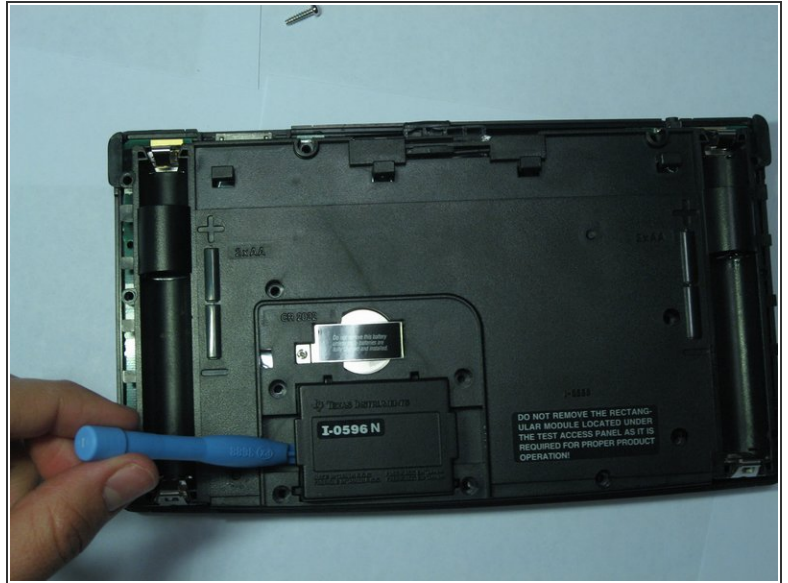
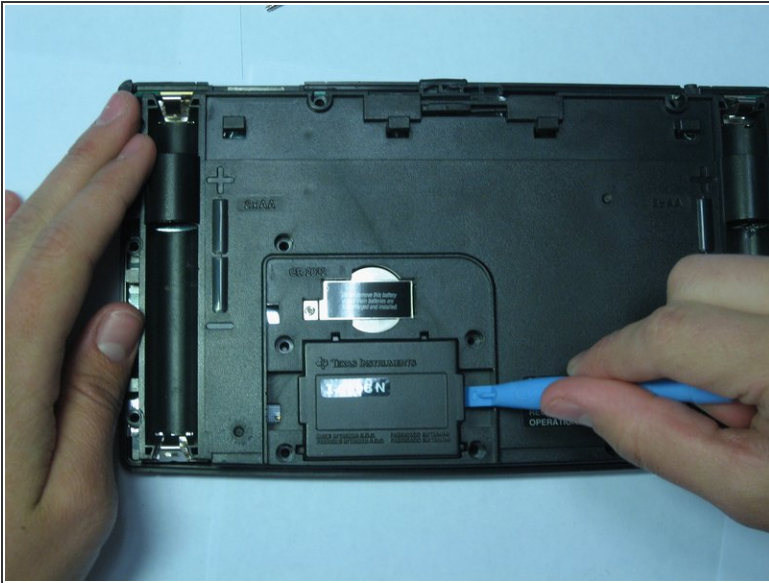
- Unscrew the 19mm screw located near center of the back of the calculator.
- Remove the panel being held by the screw.

## Step 7



- Using the same Phillips screwdriver, unscrew the remaining three 11.8mm screws.

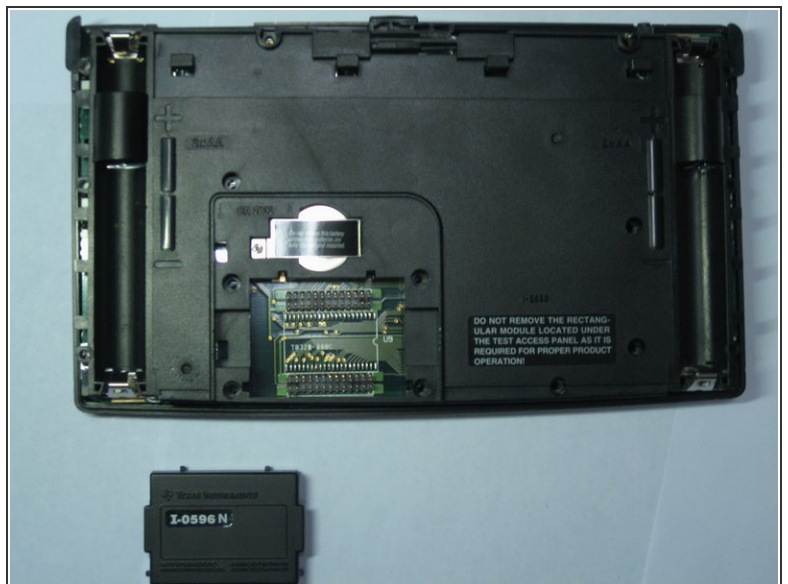
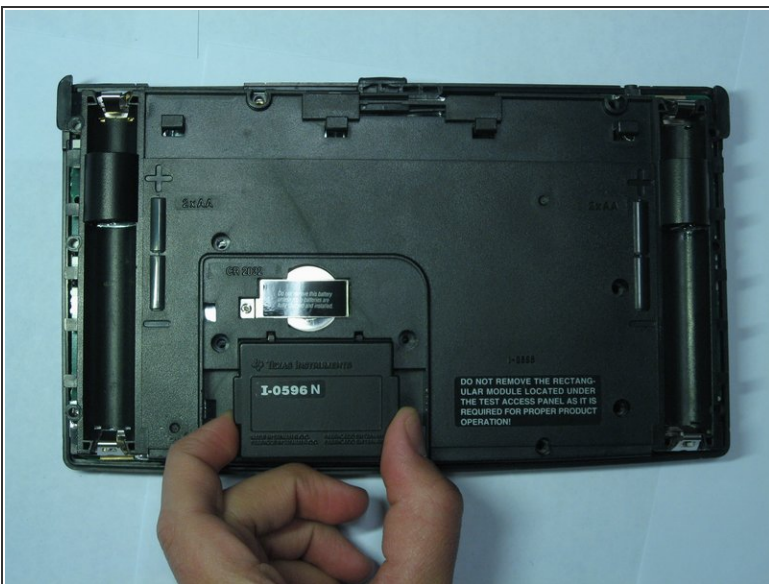
## Step 8



- Using the Ipod Opening Tool pull up on both sides of the rectangular module while keeping the rest of the calculator flat on a surface face down

⚠ You may get a lot of resistance from the module. Do not use too much force as you risk damage. Use small amounts of force to work the module out.

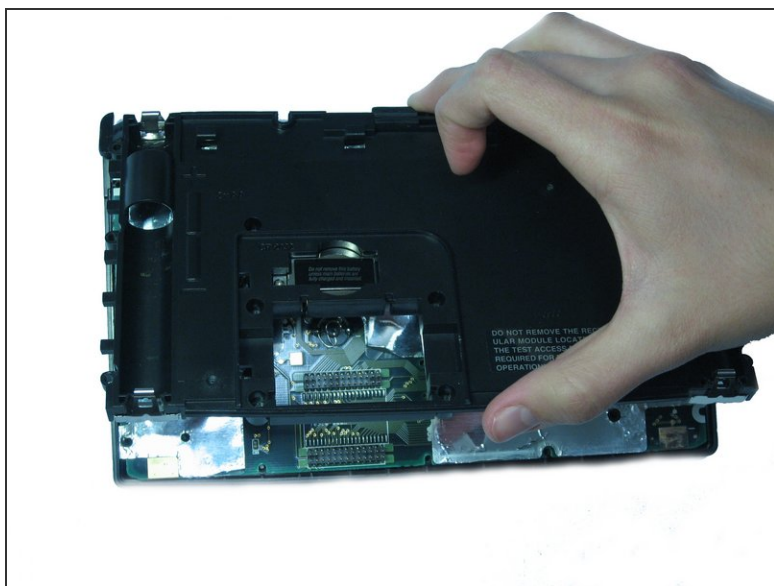
## Step 9




- Pull out the rectangular module when it is finally loose enough.



## Step 10



- Now pull up on the back cover of the calculator while holding the rest of it flat on a surface.

 Be careful not to tilt the front of the calculator at this point. The keyboard buttons are now unsupported and will fall out of place.

To reassemble your device, follow these instructions in reverse order.