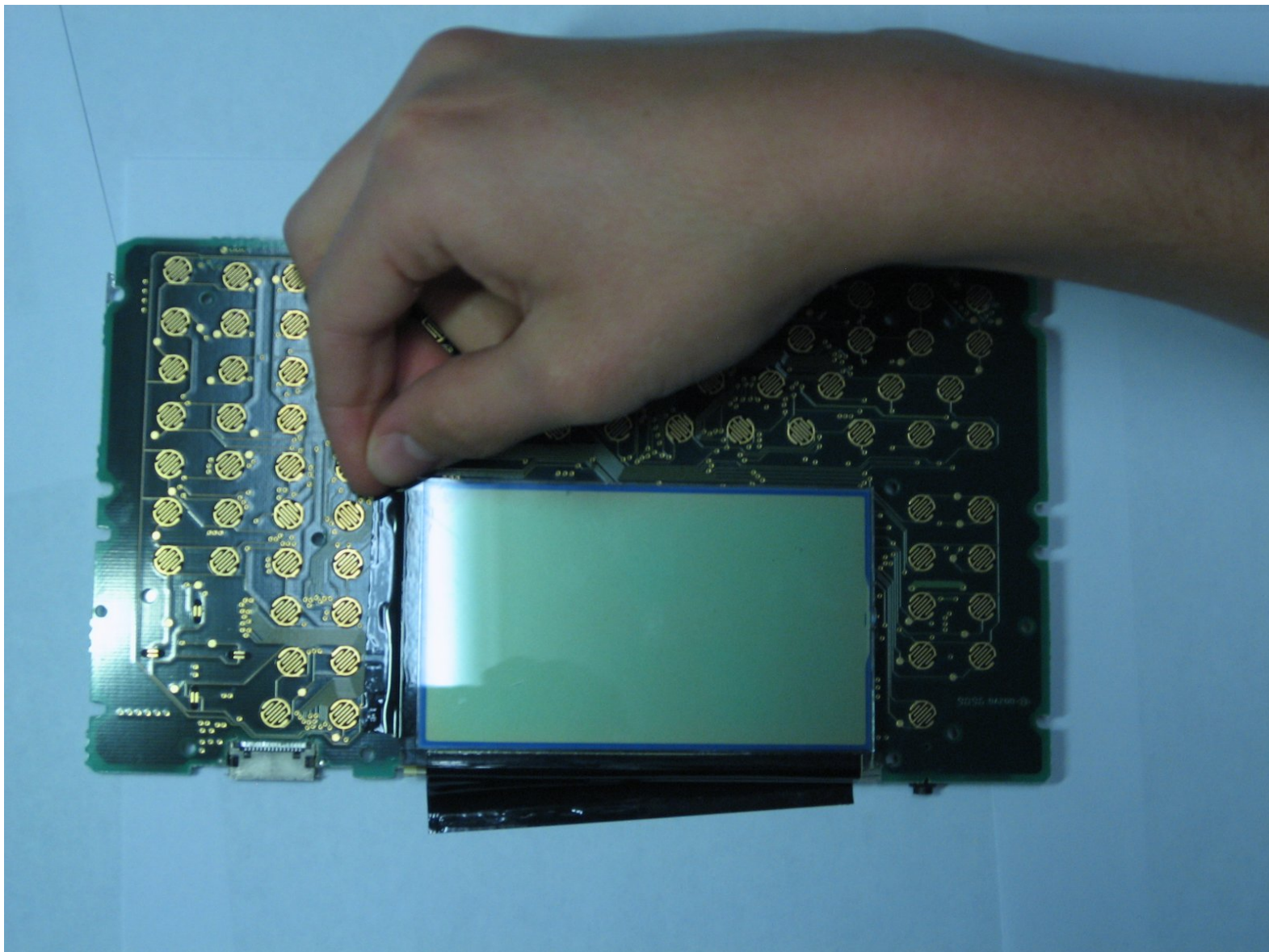




# Texas Instruments TI-92 Display Replacement

Written By: Daniel Maldonado



## INTRODUCTION

In this guide we will show how to remove the display to replace it if broken.

- *incomplete we currently do not know how to do this and can find no information on it*



### TOOLS:

- [Phillips #00 Screwdriver](#) (1)
  - [iFixit Opening Tools](#) (1)
-

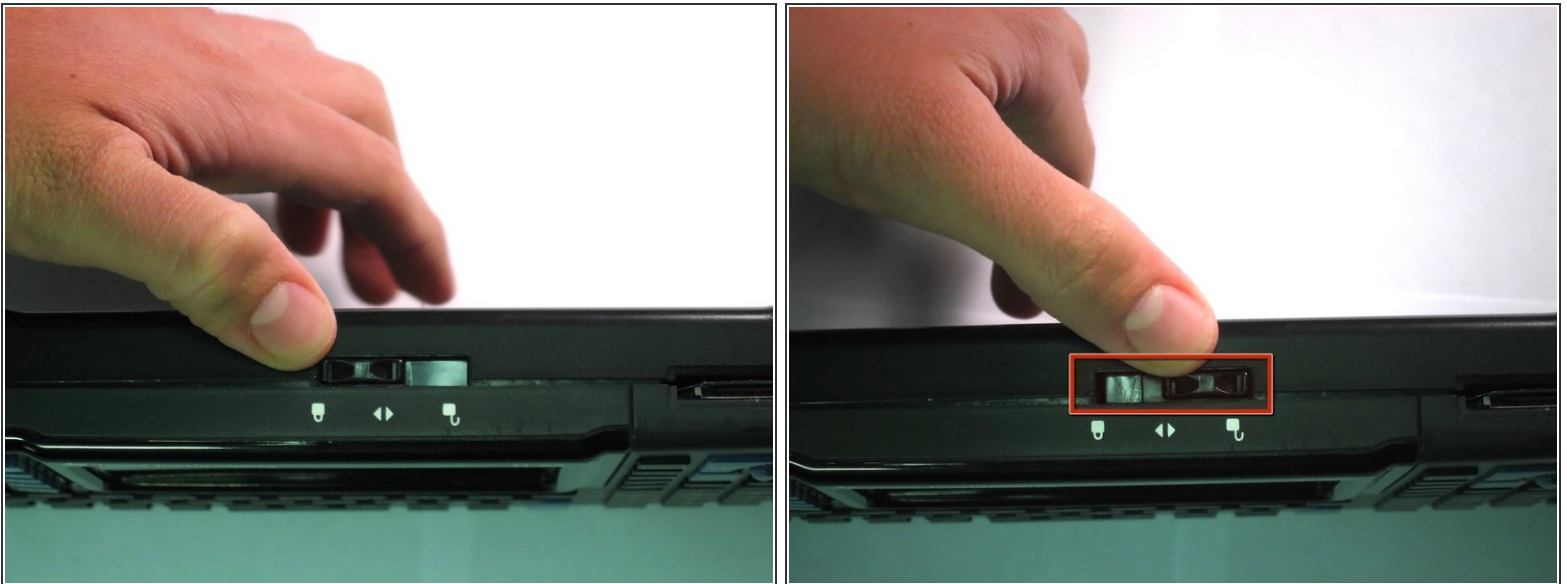
## Step 1 — Back Cover



**i** The first step to any repair operation is to remove the front cover.

- Grab the back of the calculator with one hand and the cover with the other.
- Pull the cover off from one of the sides for easy removal.

## Step 2



- Orientate the calculator with the top facing towards you.
- Slide the locking tab, found on the top part of the calculator, to the unlock position.

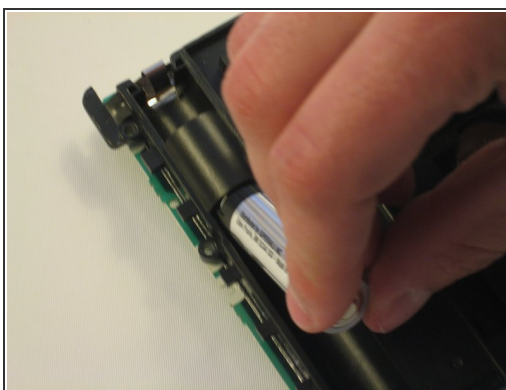


## Step 3



- "Locking Tab"
- To remove the back cover, slide the cover away from the locking tab towards the bottom of the calculator until the cover no longer slides.
- Then with the front of the calculator facing down, pull up on the back cover.
- The calculator should now be orientated with the front facing down, as shown in picture 2.

## Step 4 — Batteries

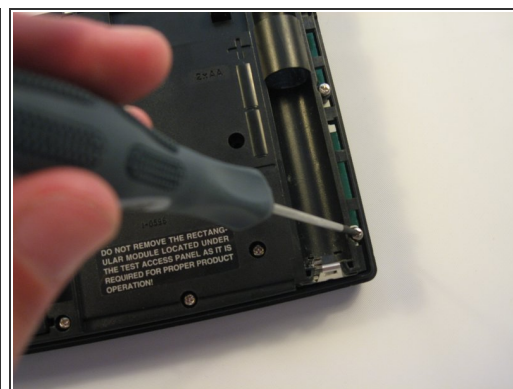
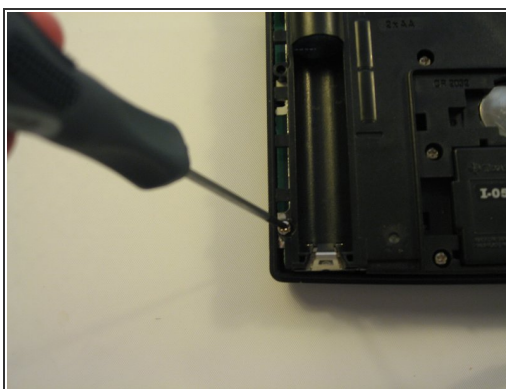


- i** The Batteries are now exposed and the calculator is face down with the back towards you.

  - Remove the bottom batteries by pressing the battery towards you while pulling it out from the far end.
- i** If you can not do the previous step with your finger try using a flat ended tool such as an Ipod opening tool.

  - After the bottom battery has been removed push or slide the other( *top*) battery towards you until it is fully exposed in the battery slot.
  - Now simply remove the battery.

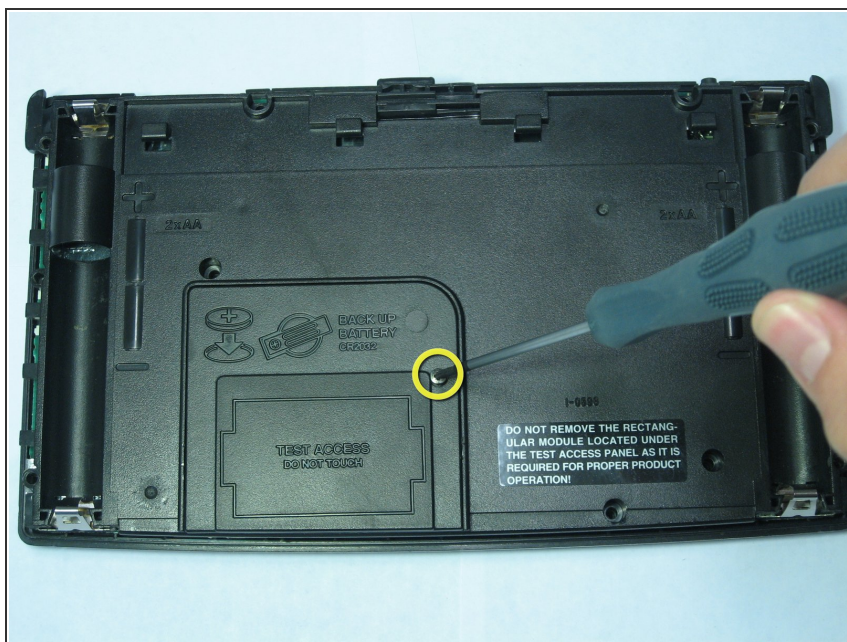
## Step 5 — Texas Instruments TI-92 Back Case Disassembly



- Using a Philips Screwdriver #00 unscrew the twelve 11.8mm screws shown in the picture and located on the back of the calculator.

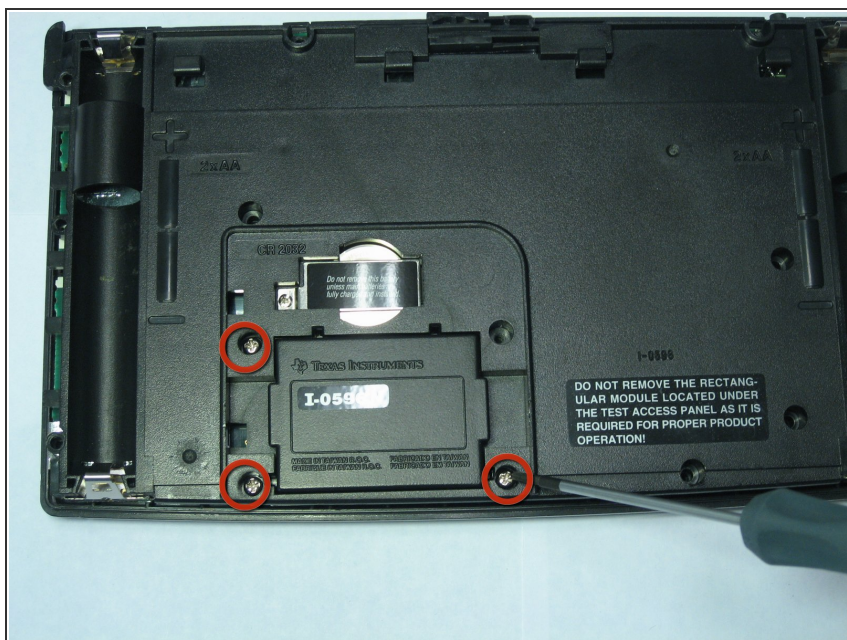


## Step 6



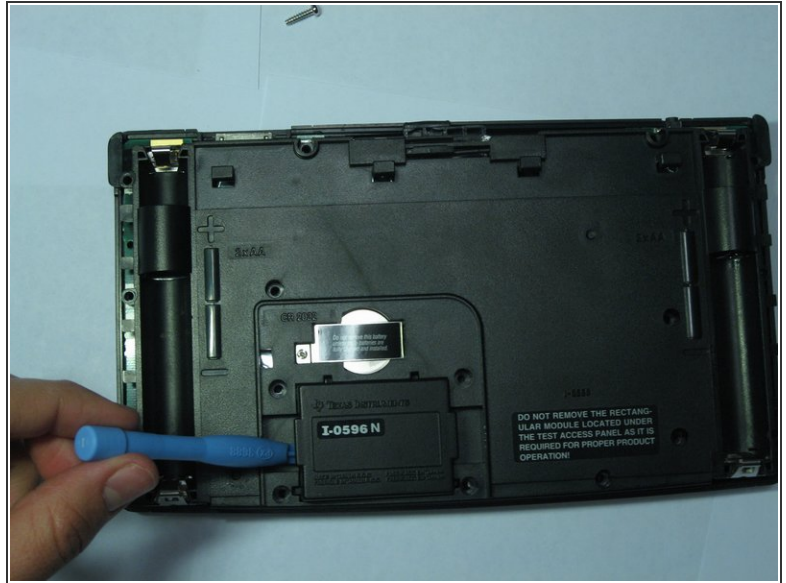
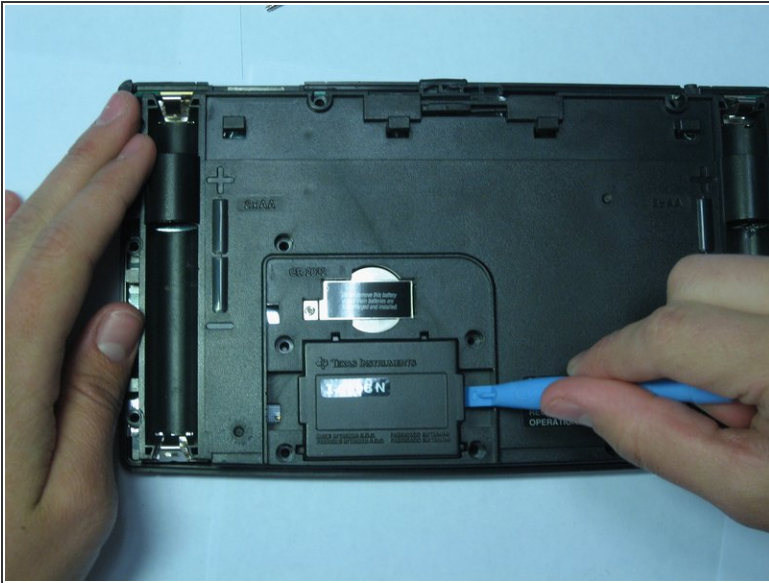
- Unscrew the 19mm screw located near center of the back of the calculator.
- Remove the panel being held by the screw.

## Step 7



- Using the same Phillips screwdriver, unscrew the remaining three 11.8mm screws.

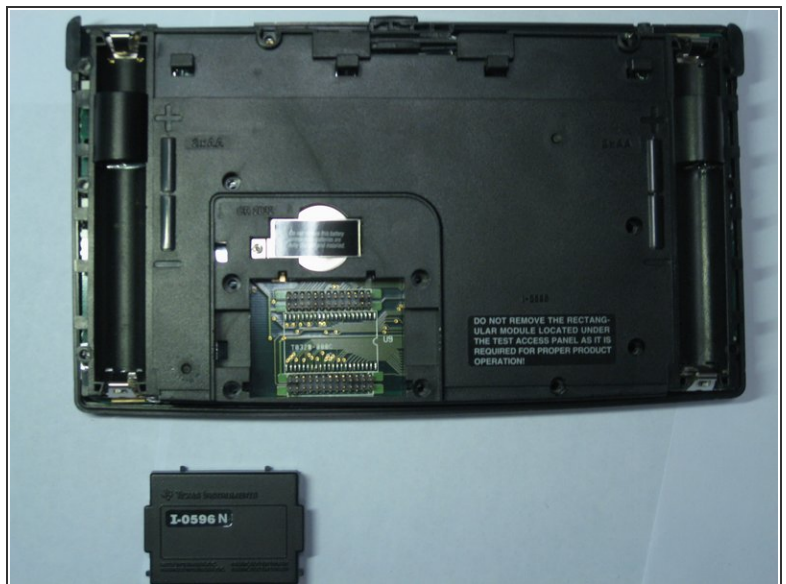
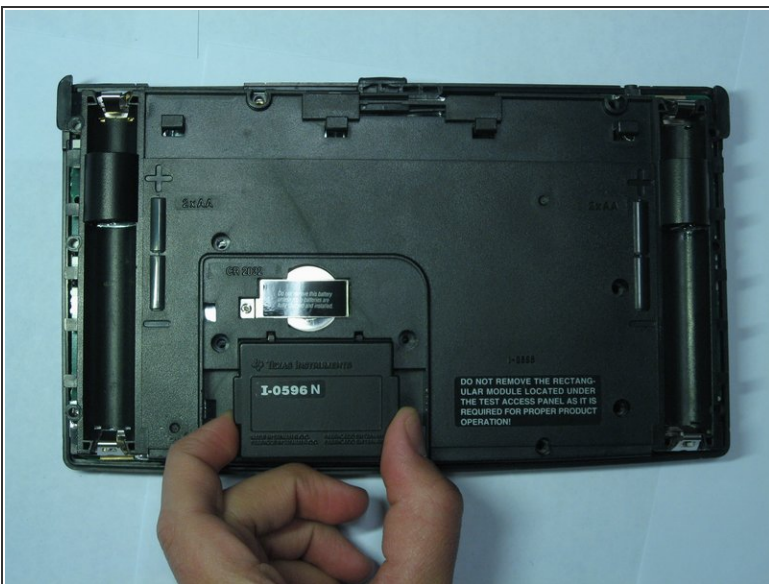
## Step 8



- Using the Ipod Opening Tool pull up on both sides of the rectangular module while keeping the rest of the calculator flat on a surface face down

⚠ You may get a lot of resistance from the module. Do not use too much force as you risk damage. Use small amounts of force to work the module out.

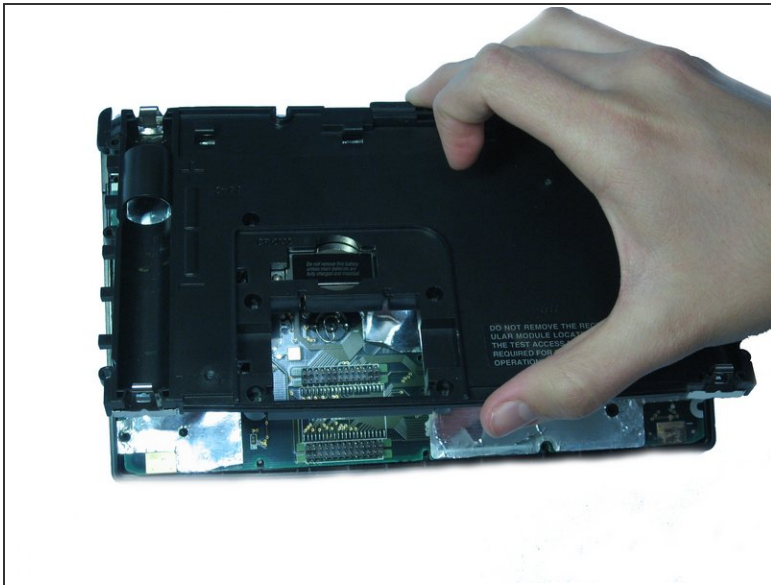
## Step 9




- Pull out the rectangular module when it is finally loose enough.



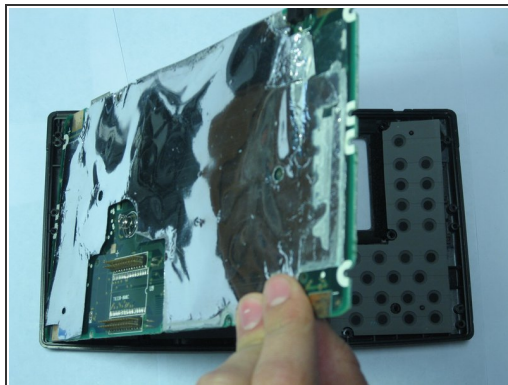
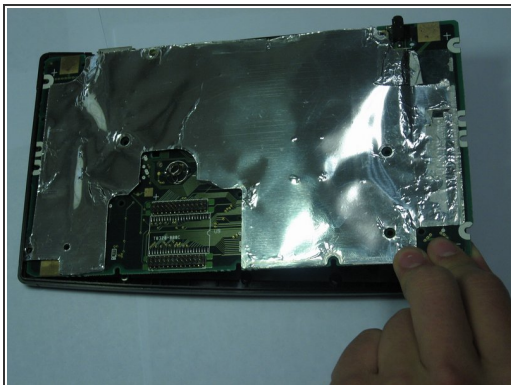
## Step 10



- Now pull up on the back cover of the calculator while holding the rest of it flat on a surface.

 Be careful not to tilt the front of the calculator at this point. The keyboard buttons are now unsupported and will fall out of place.

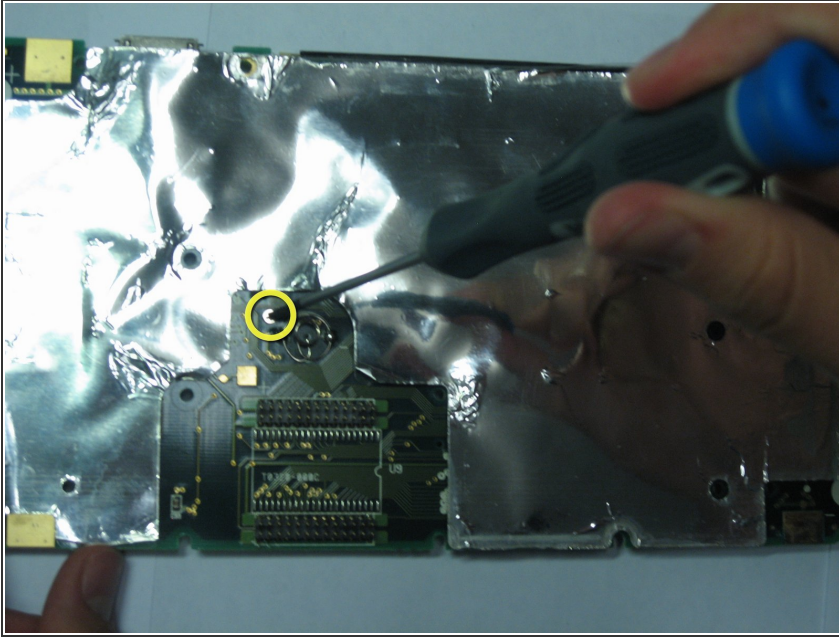
## Step 11 — Motherboard



- Pull the motherboard up while holding the rest of the calculator firmly in place
- The motherboard has now separated from the rest of the calculator

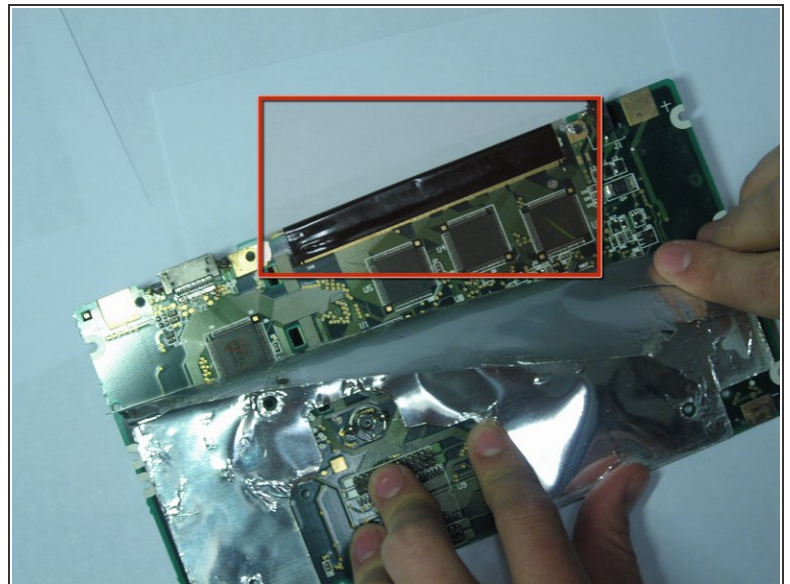
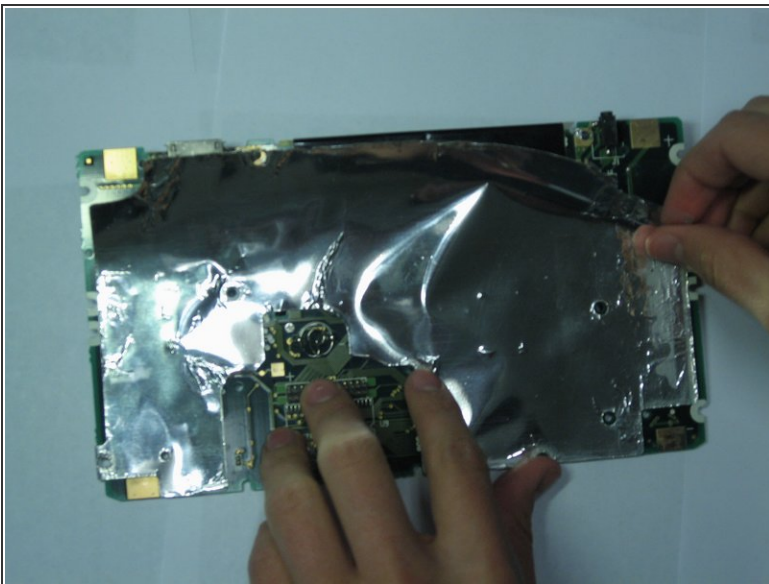


## Step 12 — Display



- ① Place the motherboard flat on a surface with the LCD screen facing down.
- Using a #00 Philip Screwdriver remove the screw located on the left side of a spring-like object located near the center of the motherboard.

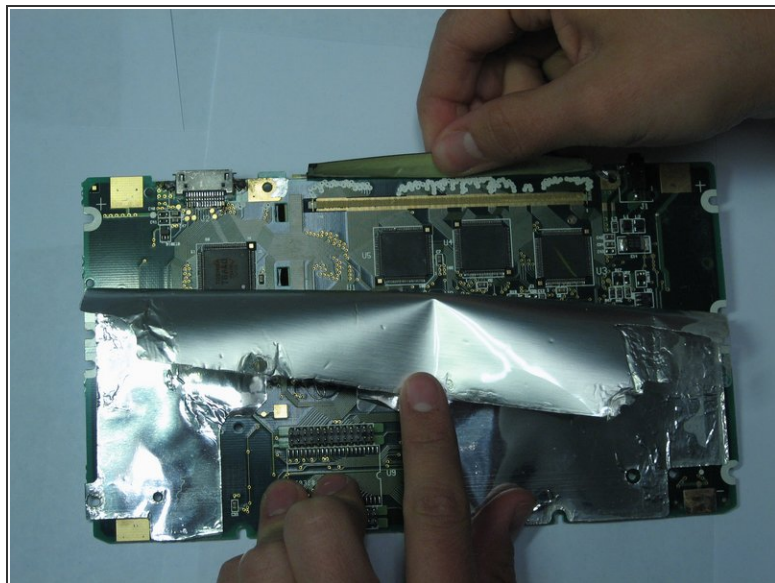
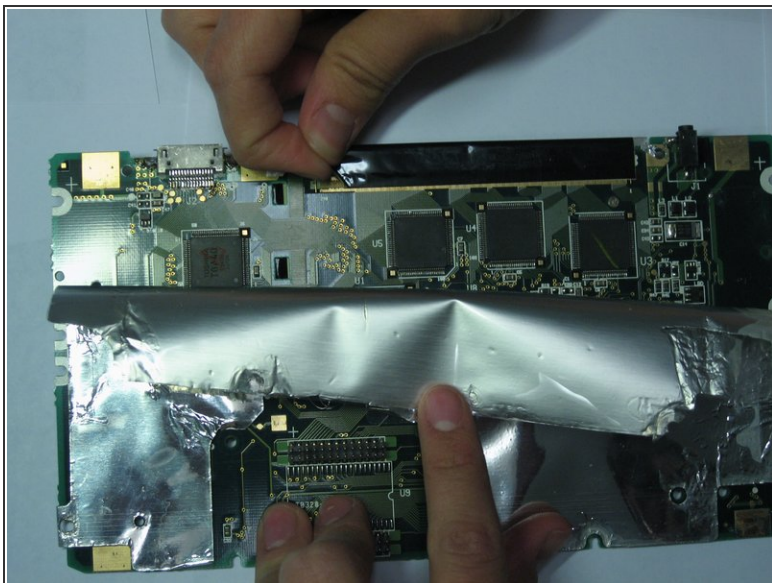
## Step 13



- Lift up on the material covering the motherboard starting from the upper right corner. Peel foil back only about half way down.

⚠ Make sure to slowly lift up on the plastic of the covering material and not the foil or the foil will rip.

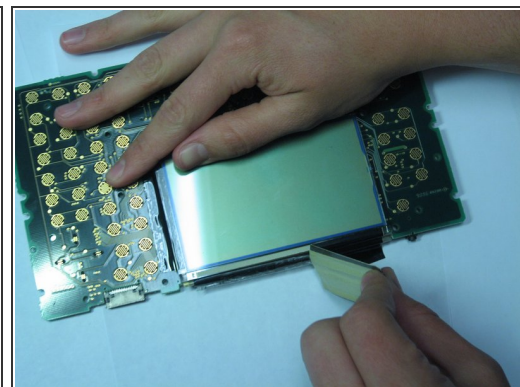
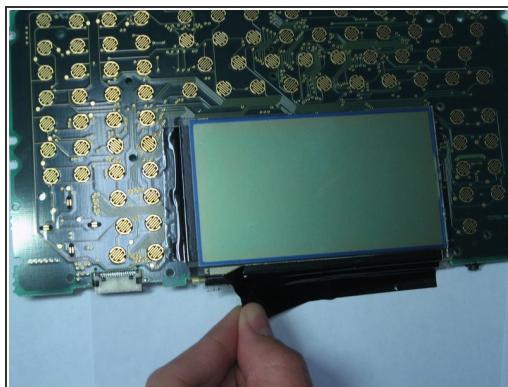
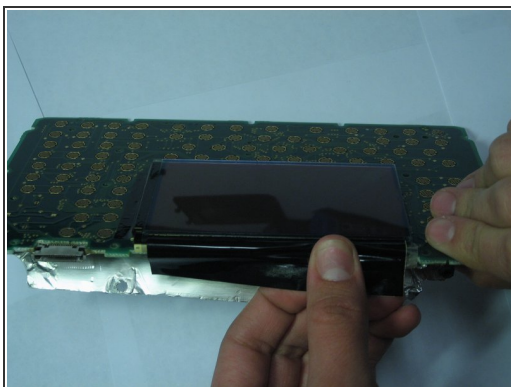
## Step 14



- Now slowly lift up the black tape located at the top of the calculator.

⚠ You will need to replace tape if removed so if you do not have this replacement part do not attempt to remove it

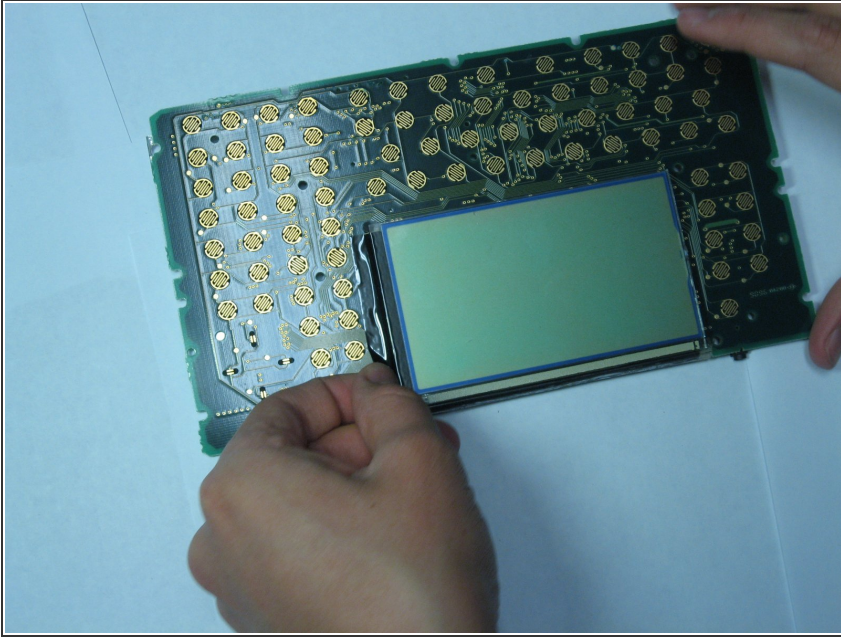
## Step 15



- Tilt the calculator up from the front so that you can see the LCD screen
- Finish removing the black tape on this side of the motherboard.



## Step 16



 ***Do not know next step***

To reassemble your device, follow these instructions in reverse order.