



---

## INTRODUCTION

Provided is an exploded view of the TI-92 calculator. All dis-assembled components are the back-side of the parts.

---

### TOOLS:

- [Phillips #00 Screwdriver](#) (1)
-

## Step 1 — Texas Instruments TI-92 Teardown



- Remove the protective cover. This will easily unsnap from the main body.

## Step 2



- Slide the tab located at the top of the calculator to the unlocked position.

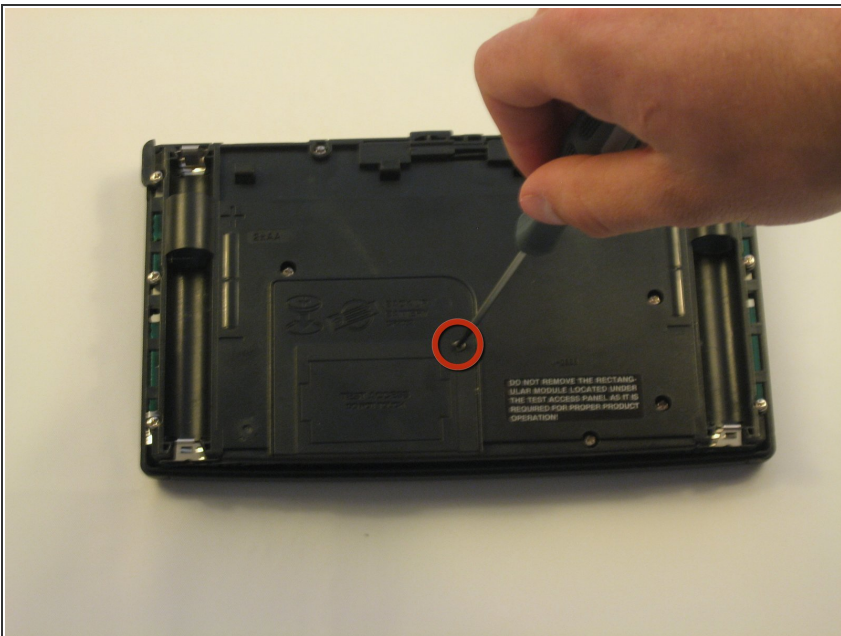


### Step 3



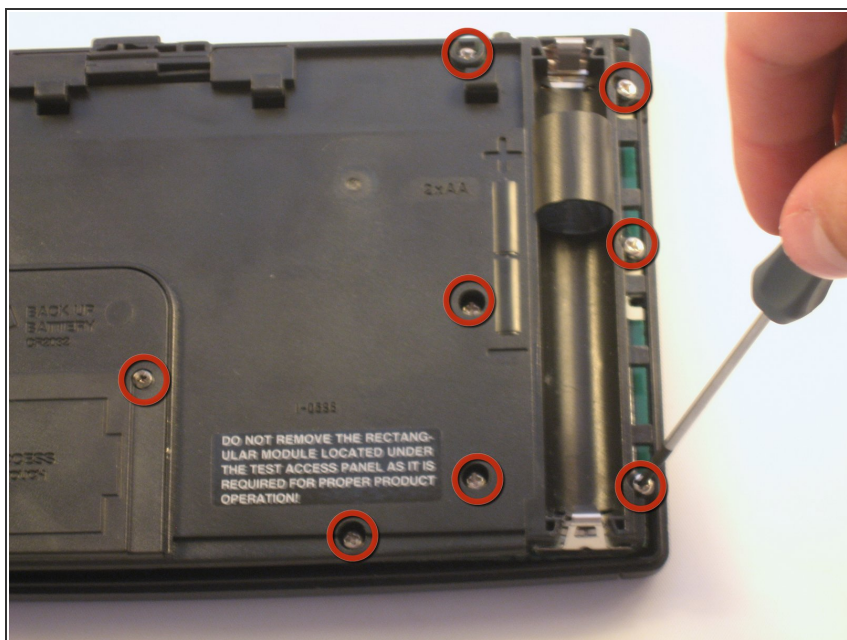
- Slide the back cover down, and then pull the back plate away from the calculator.

### Step 4



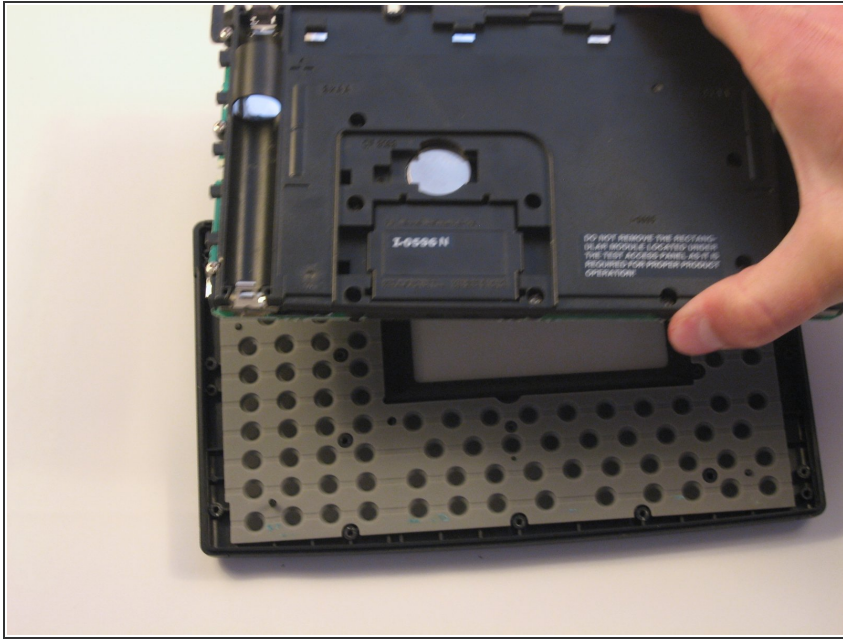
- Unscrew the back-up battery cover.  
(1 screw)

## Step 5



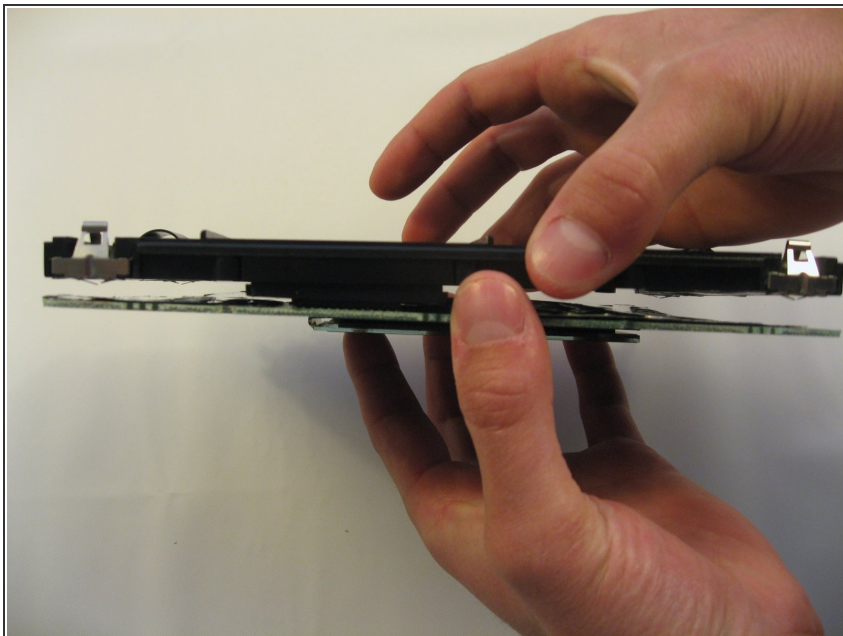
- Remove all visible screws.
- Note that there are more screws than shown in this picture (16 in total). You **MUST** remove them **ALL**.

## Step 6



- Keeping the front faceplate **FACE DOWN** on the work surface, lift the circuit board **AND** the plastic backing up and away from the faceplate.

## Step 7



- These two components are loosely attached by the rectangular module just below the back-up battery.

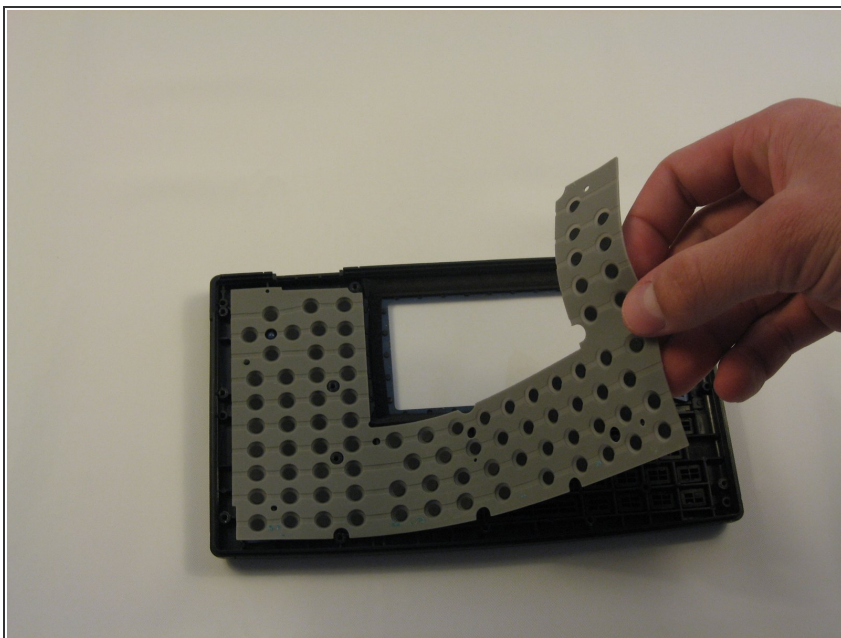


## Step 8



- The warning label next to this module reads "*Do not remove the rectangular module located under the test access panel as it is required for proper product operation!*"

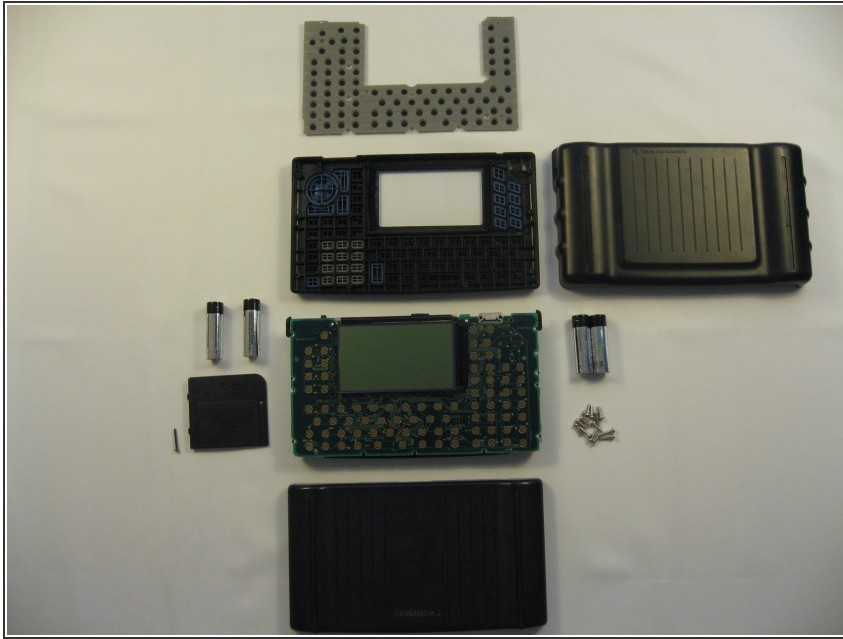
## Step 9



- The rubber mat in back of the faceplate may be removed, exposing all 77 individual plastic keys.

**⚠ CAUTION:** These keys are loosely held in by gravity and will fall out if the faceplate is tilted to any extreme.

## Step 10



- The device has now been separated into as many component parts as intended by the manufacturer.

To reassemble your device, follow these instructions in reverse order.