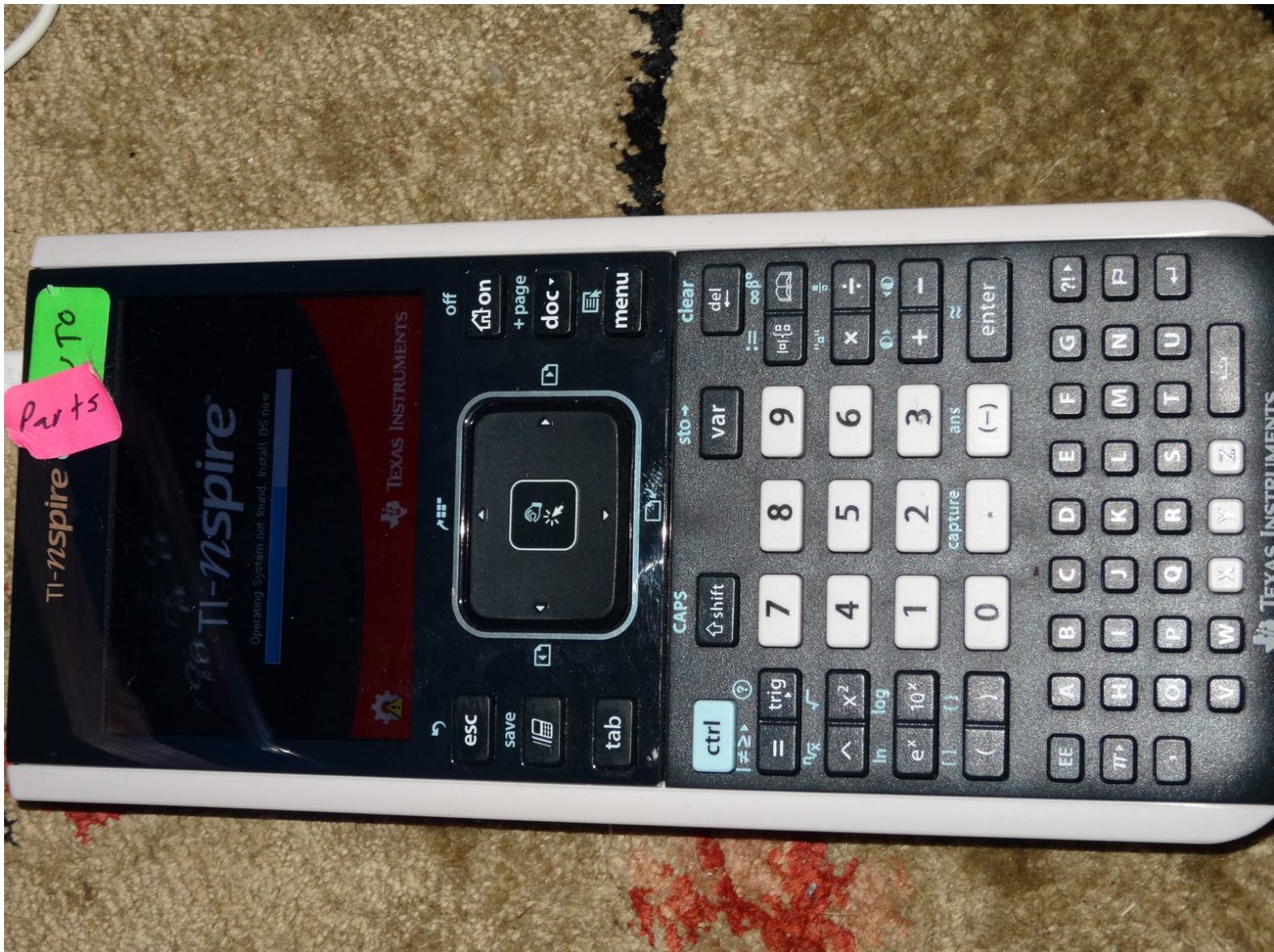




Texas Instruments TI-Nspire CX Defective Button Repair

Solve some failed button problems. Corrosion forms inside some of the buttons.

Written By: trogfield



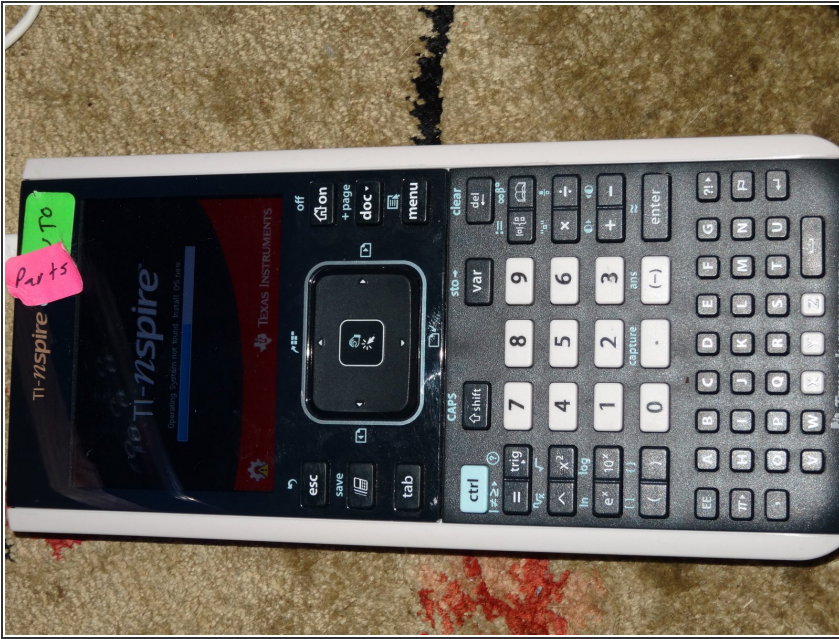
INTRODUCTION

Sometimes corrosion can form inside the buttons of a TI-Nspire CX calculator, causing them to stop working correctly. This guide will show you how to do disassemble the calculator and clean problematic buttons, which should help solve the problem.

TOOLS:

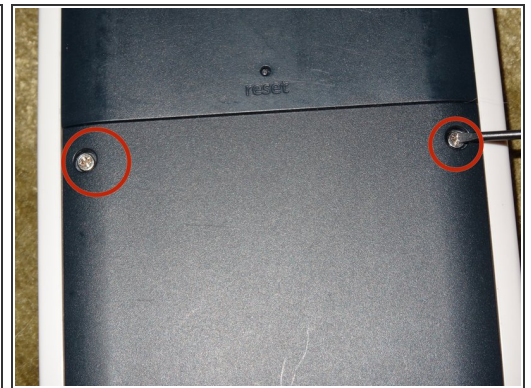
- [64 Bit Driver Kit](#) (1)
-

Step 1 — Texas Instruments TI-Nspire CX Defective Button Repair



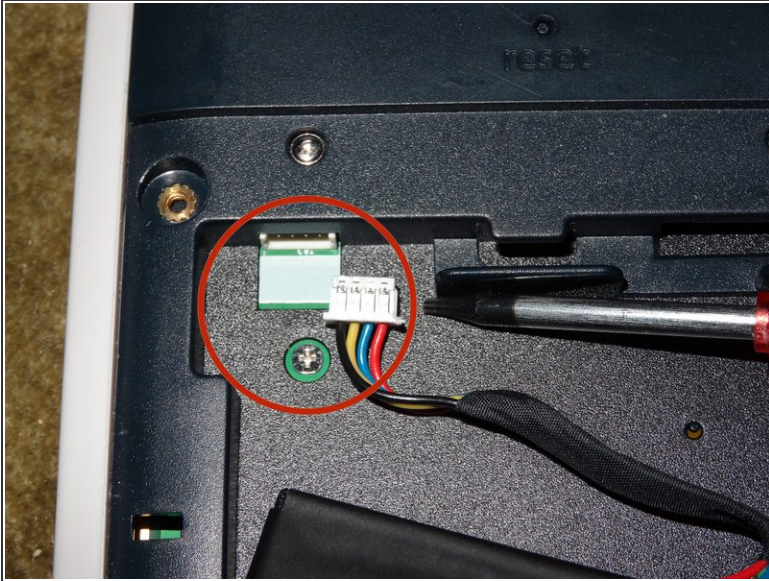
- Power down the calculator with the OFF function.

Step 2



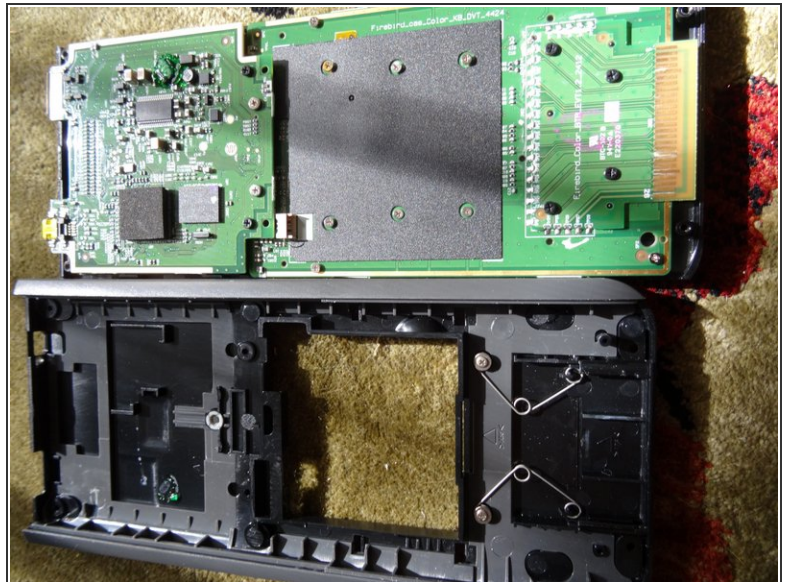
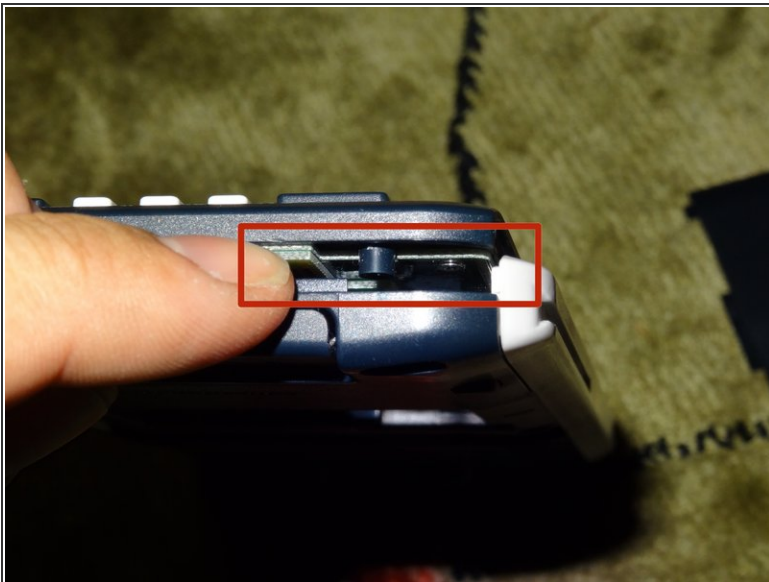
- Remove the feet from the top of the calculator to reveal the top clutch screws.
- Unscrew the clutch screws, torx bottom screws, and battery drawer screws.
 - ⚠ Use a 1mm flathead screwdriver for the clutch screws.
 - ⚠ You will need to switch your screwdriver bit for the torx screws. Be careful not to strip the screws.

Step 3



- Disconnect power and two clutch screws.

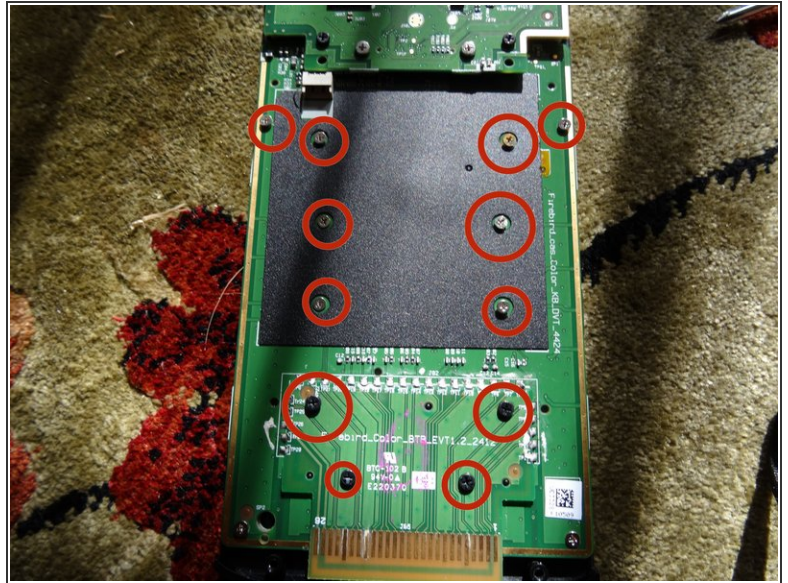
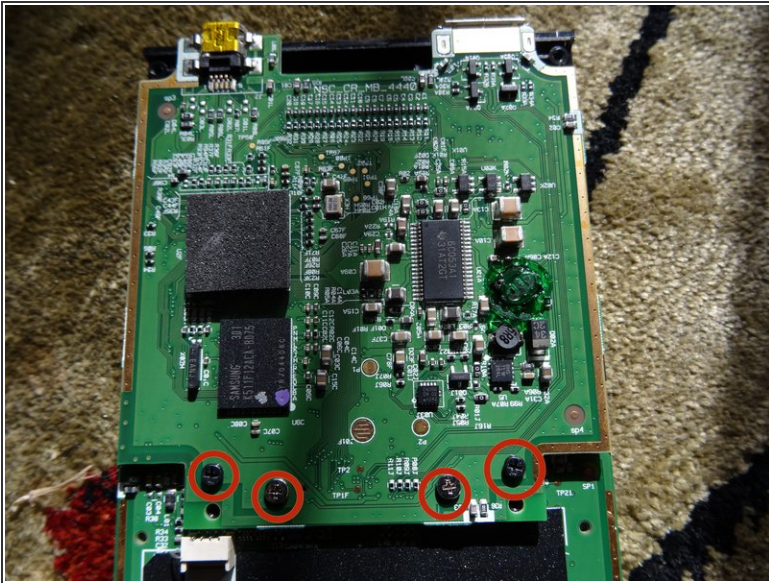
Step 4



- Remove front panel.

⚠ Refer to other guide for more pictures

Step 5



- Remove board screws.

Step 6



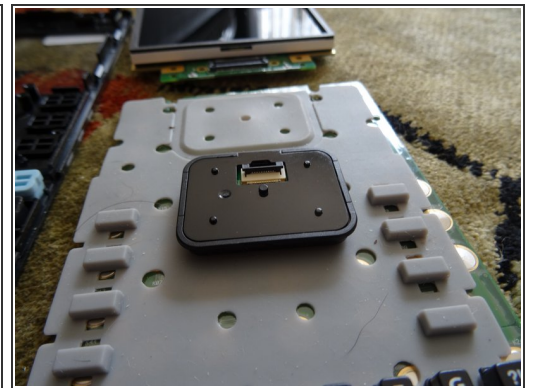
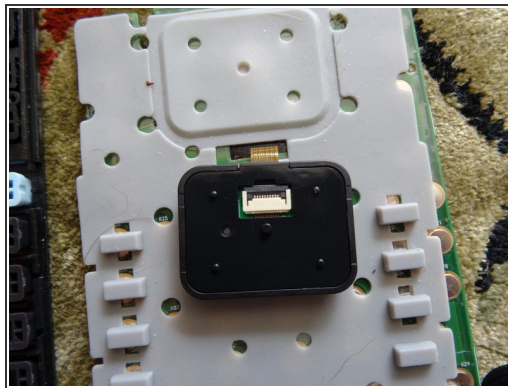
⚠ Spacers will fall out. Didn't catch where they go.

Step 7



- Pull top board and screen off. There is not much chance for damage, the connector is easily removed.

Step 8

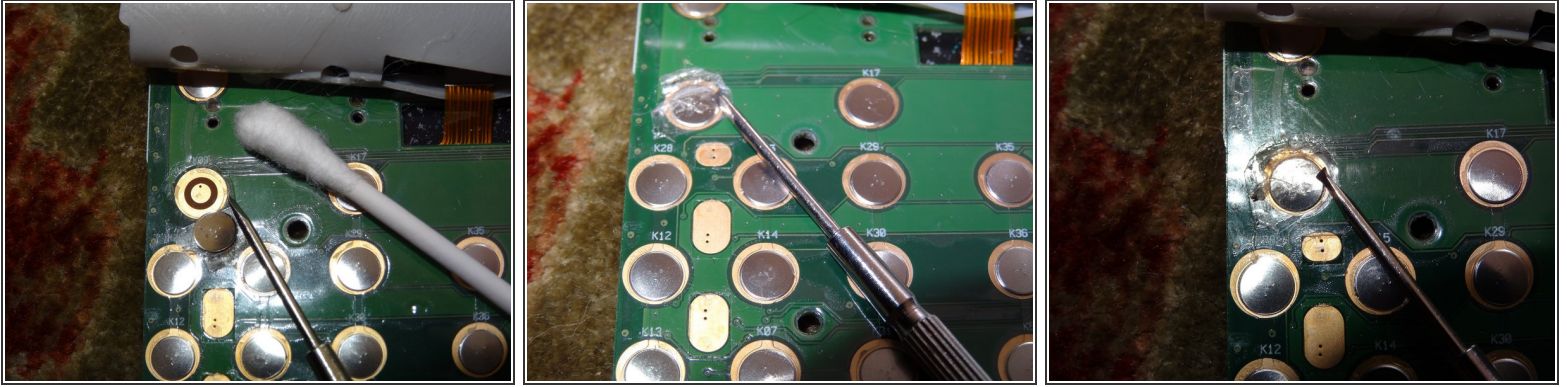


- Take keyboard off. Be careful. Buttons will fall out, refer to another calculator or front page picture.

⚠ Buttons will fall out. There may be a mess of them that pile out.

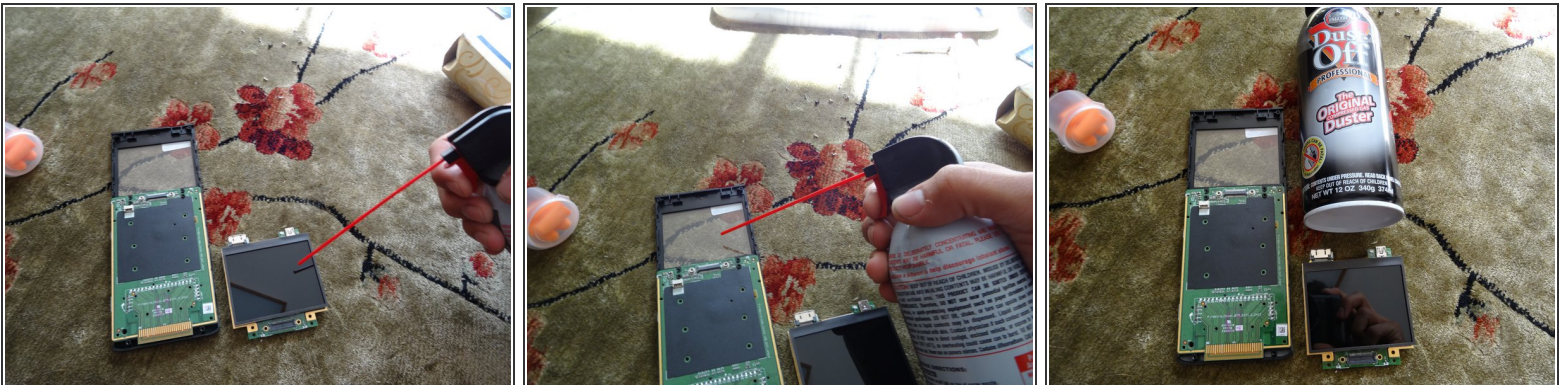
- Take mouse flex cable off, otherwise it will dangle. Flip up tab

Step 9



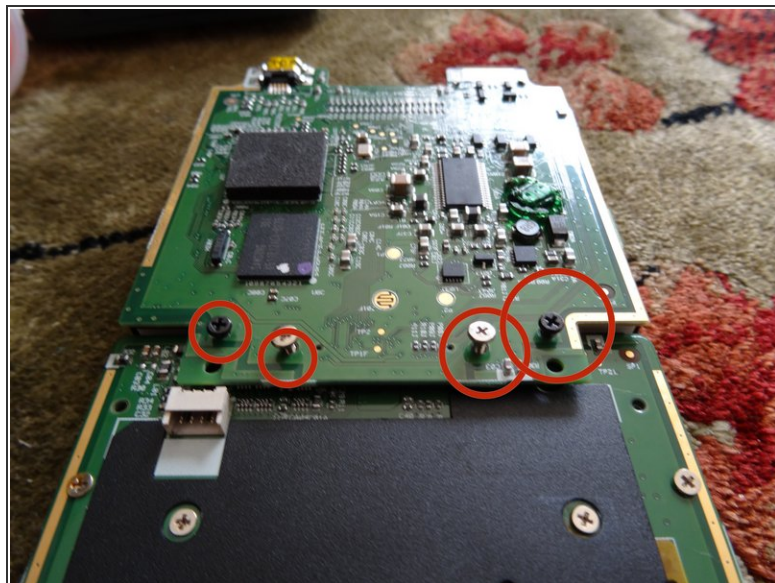
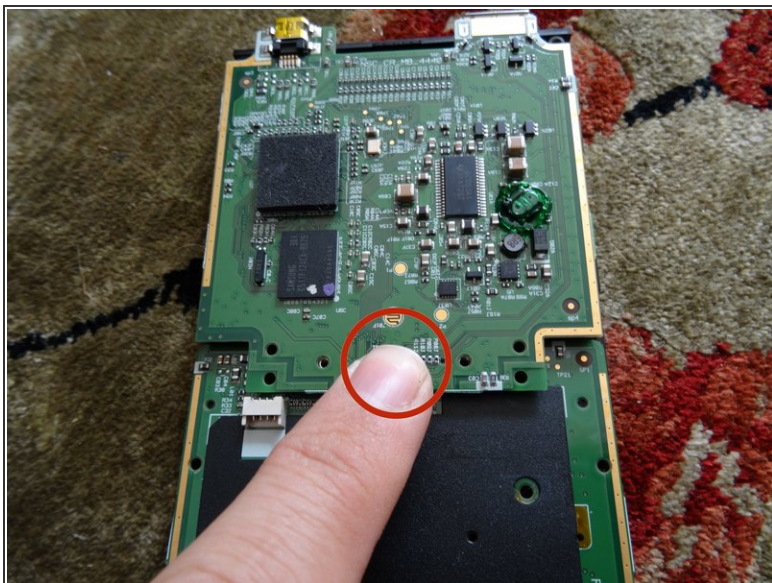
- Cut around failing button, peel off delicately with a screwdriver or tweezers.
 - Clean with rubbing alcohol.
- ⚠ Be careful not to dig into board with knife. this would render board useless.

Step 10



- Clean screen with compressed air. Makes cleanup simple.
- Rubbing alcohol may be used.

Step 11



- Press connector back in. Shift board around with finger until docks match.

 **POWER ON AND VERIFY FIX.**

- Set screws in place.

Step 12



- Drop more screws in, and tighten all.
- Reassemble.

To reassemble your device, follow these instructions in reverse order.