



# The Beatles Rock Band Drum Set Front Button Replacement

This guide will demonstrate how to replace the control buttons on the front of the drum set.

Written By: Zach Richter



## INTRODUCTION

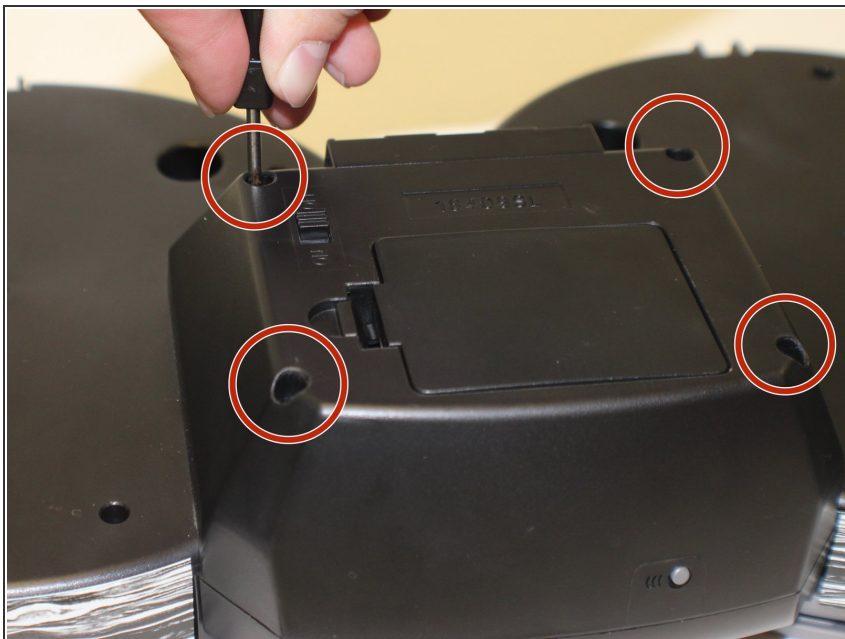
This repair guide requires you to be more careful when it come to working around the wires that you will find. You will also need to unscrew some screws in the process. Be careful when removing the module and pay extra attention to where you put your screws.

---


### TOOLS:

- [Phillips #1 Screwdriver](#) (1)
  - [JIS Driver Set](#) (1)
-

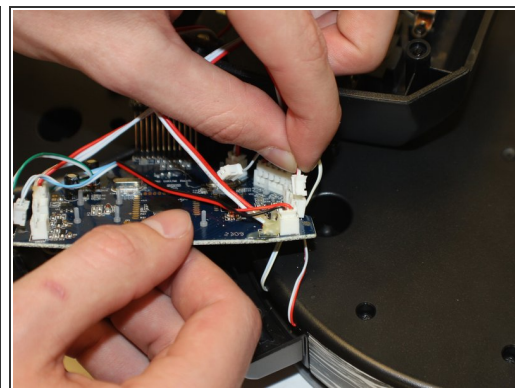
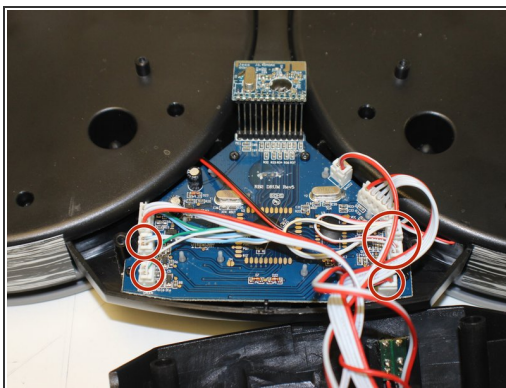
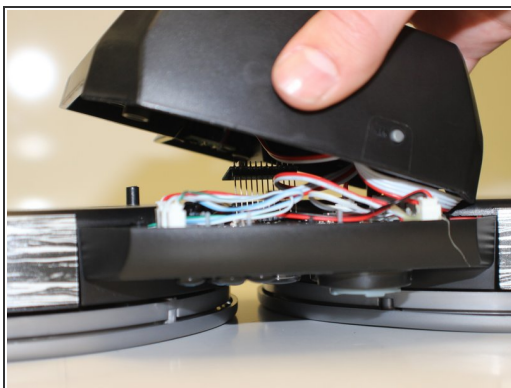
## Step 1 — Front Buttons



- Remove the four Phillips size J1 screws from the corners of the bottom module.

 Removing the screws requires a thin screwdriver.

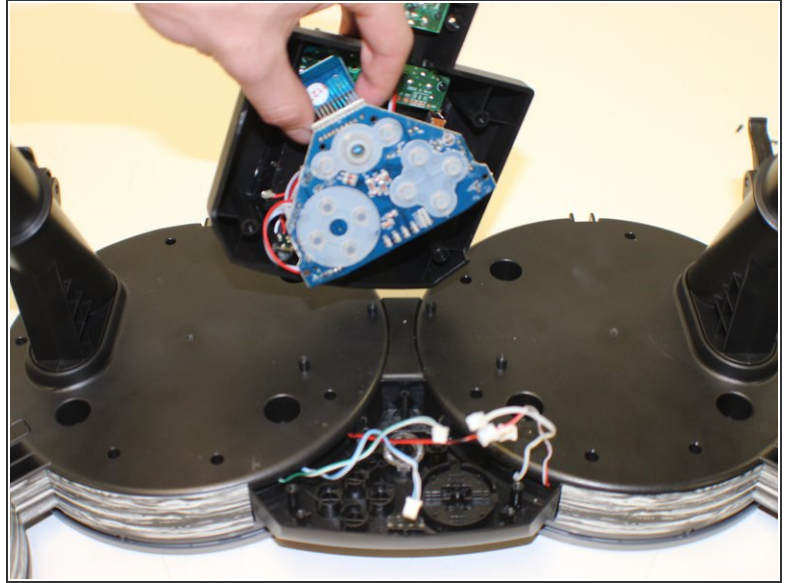
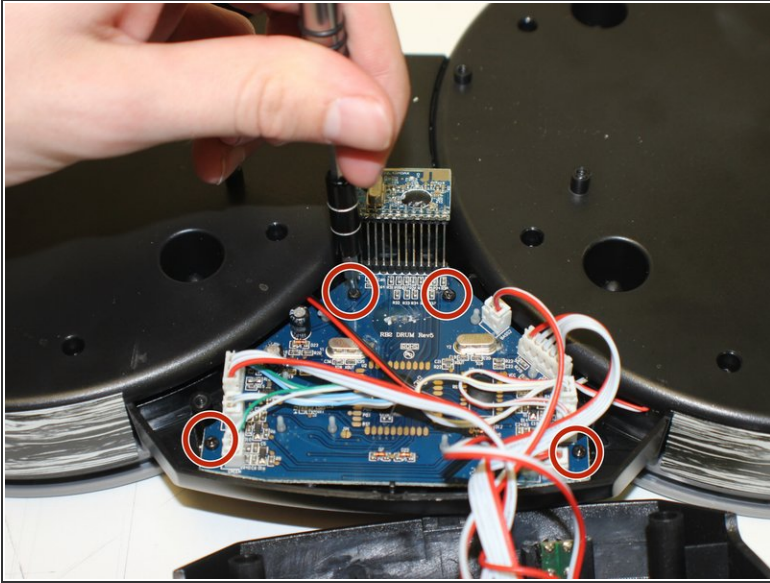
## Step 2



- Open the bottom module. Disconnect the five wire clips as shown in the pictures.

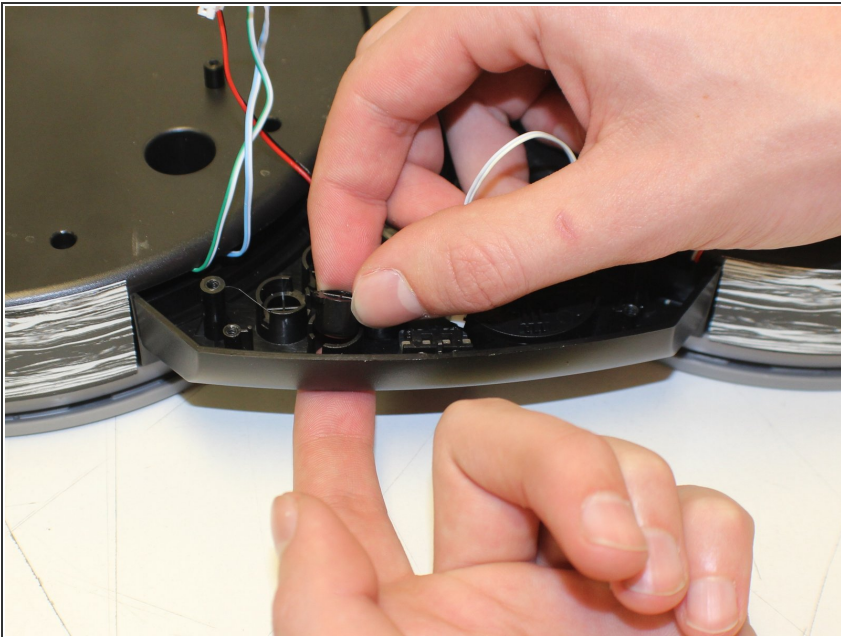


### Step 3



- Remove the four Phillips #1 sized screws holding the main circuit board. Rotate the board up and out, exposing the buttons.

### Step 4



- The buttons can be pushed up from the bottom to be removed.

To reassemble your device, follow these instructions in reverse order.

This document was generated on 2019-09-18 02:42:42 AM (MST).

