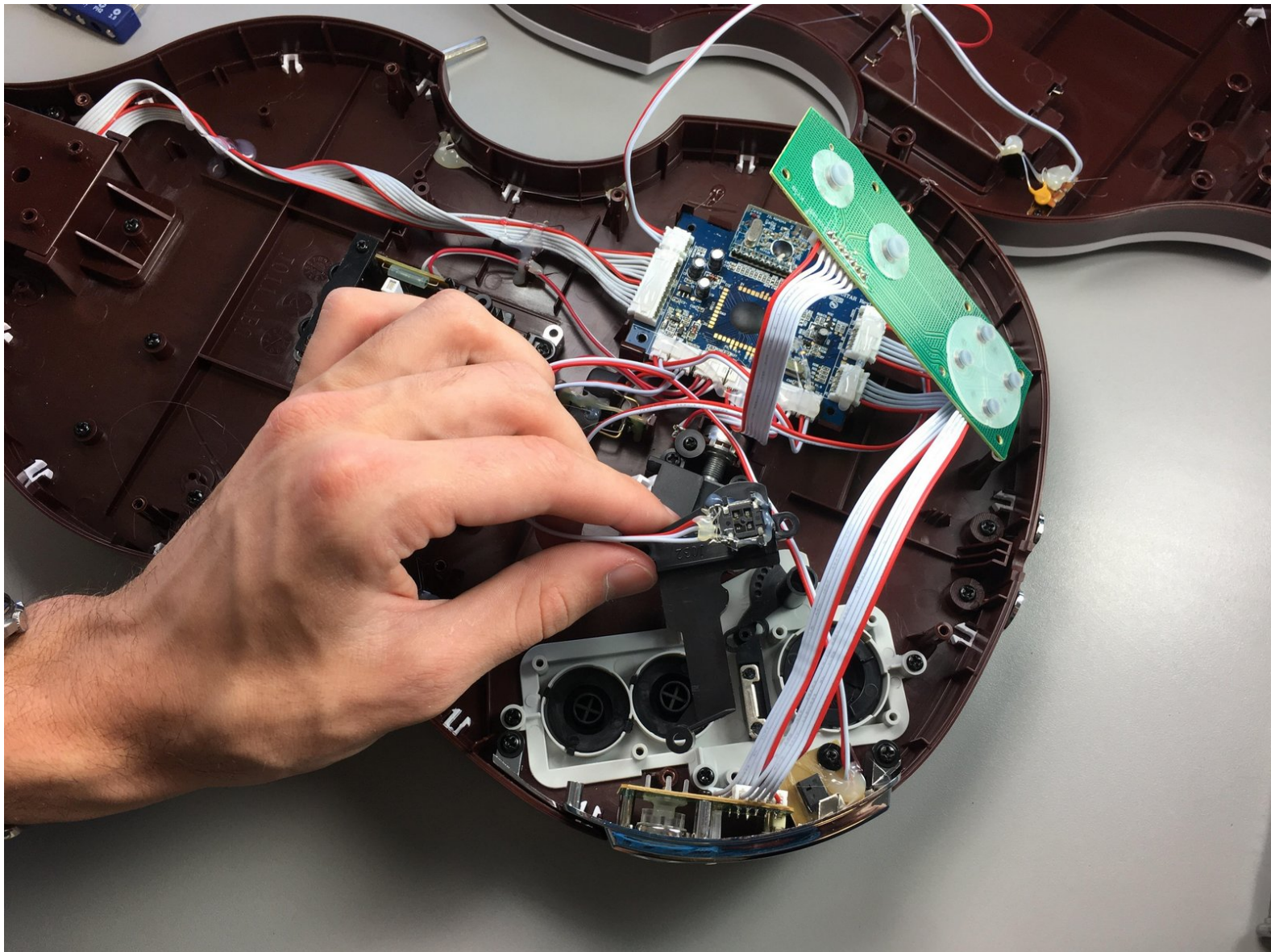




# The Beatles Rock Band Hofner Bass Toggle Switch Replacement

This guide is for how to replace the 5 way toggle switch next to the stat

Written By: Jacob



---

## INTRODUCTION

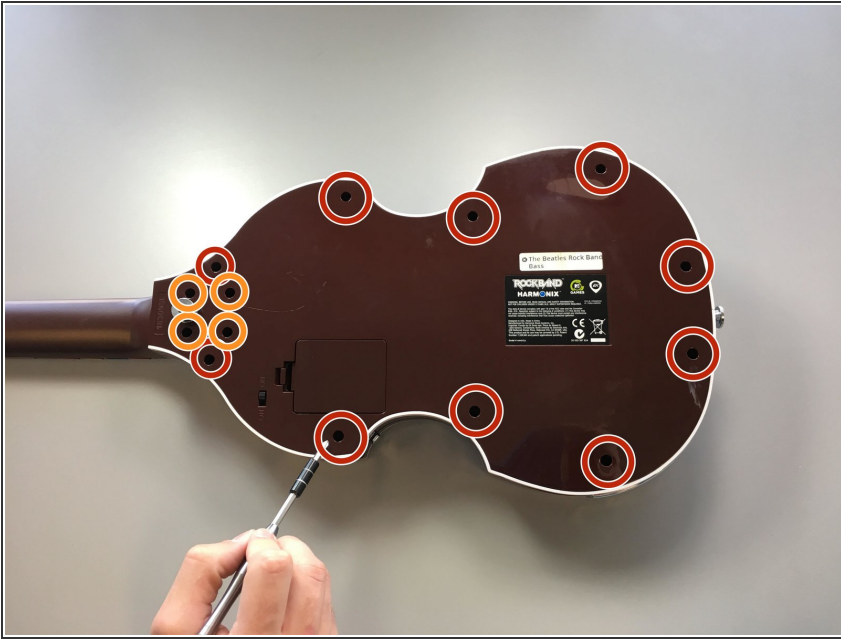
In this guide we will show you how to replace the 5 way toggle switch on a Rock Band Beatles Hofner Bass.



### TOOLS:

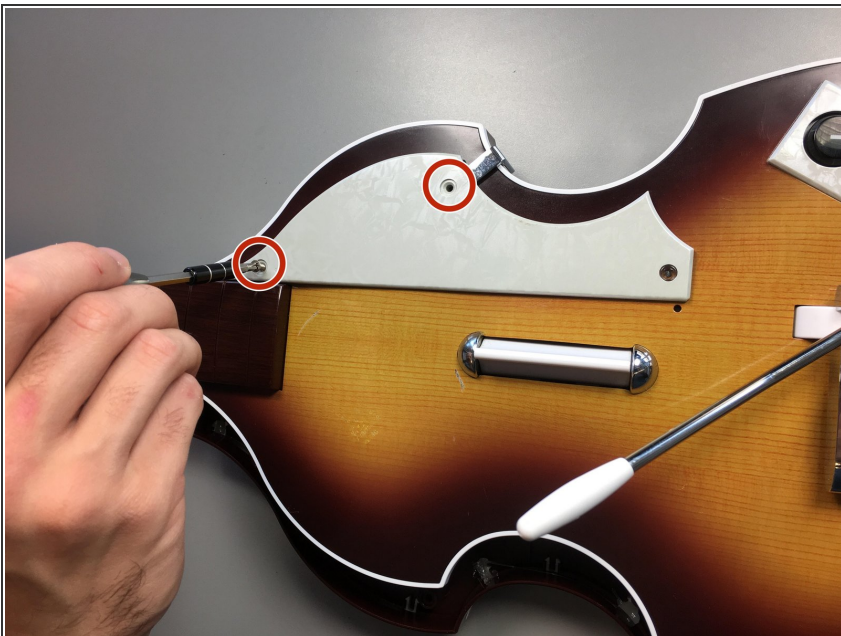
- [JIS Driver Set](#) (1)
-

## Step 1 — Back Plate



- Flip the bass onto its backside, so that the strummer is facing the table and the battery compartment is facing you.
- Use a J1 Phillips head screwdriver to remove ten 5mm short screws.
- Use a J1 Phillips head screwdriver to remove four 5mm long screws.

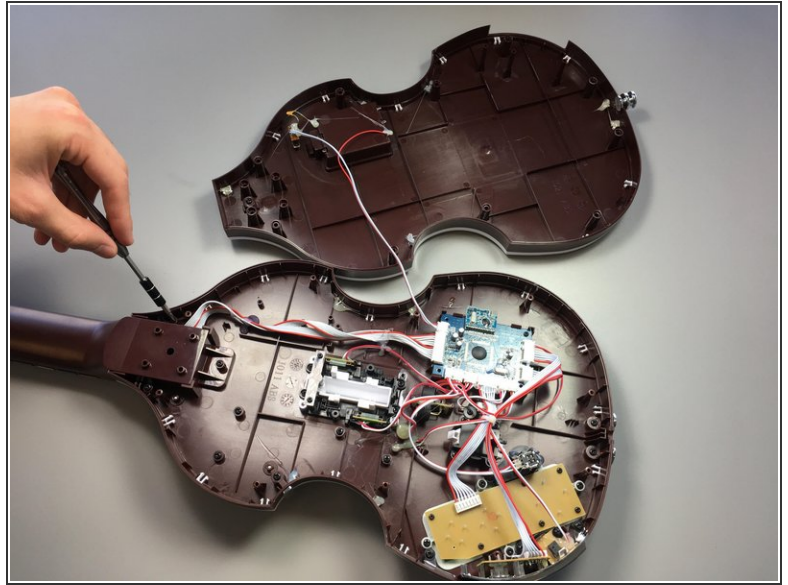
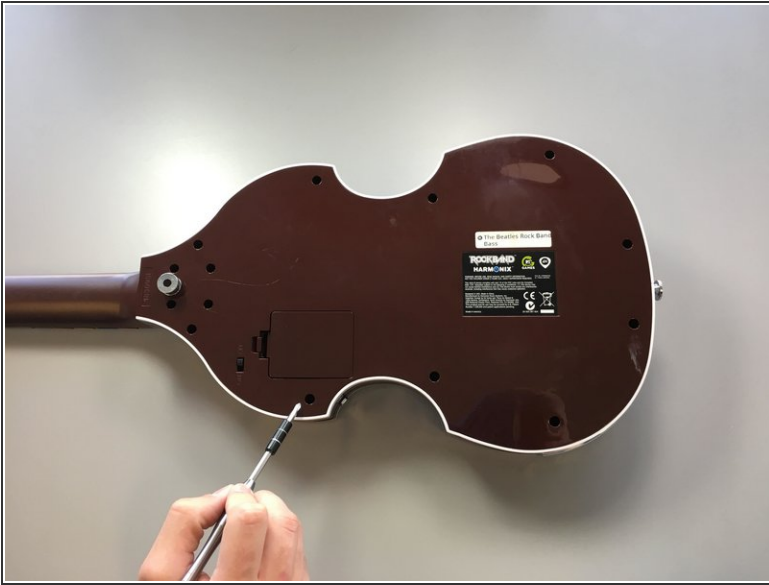
## Step 2



- Flip the bass to the front, with the strummer and fret buttons facing you.
- Use a J1 Phillips head screwdriver to remove two 10mm silver, short screws.

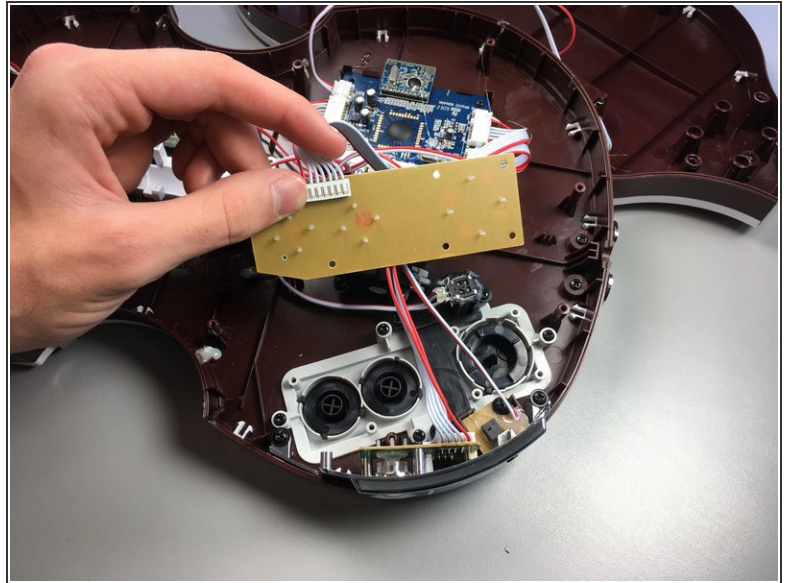
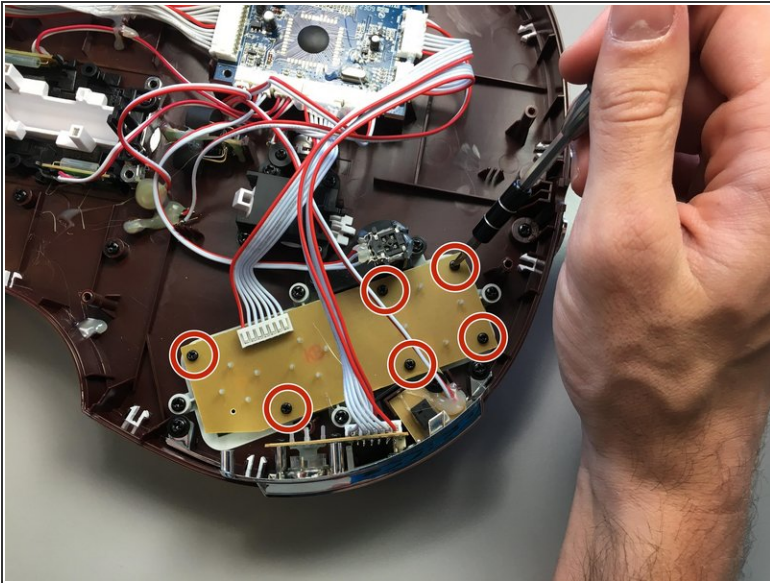


## Step 3



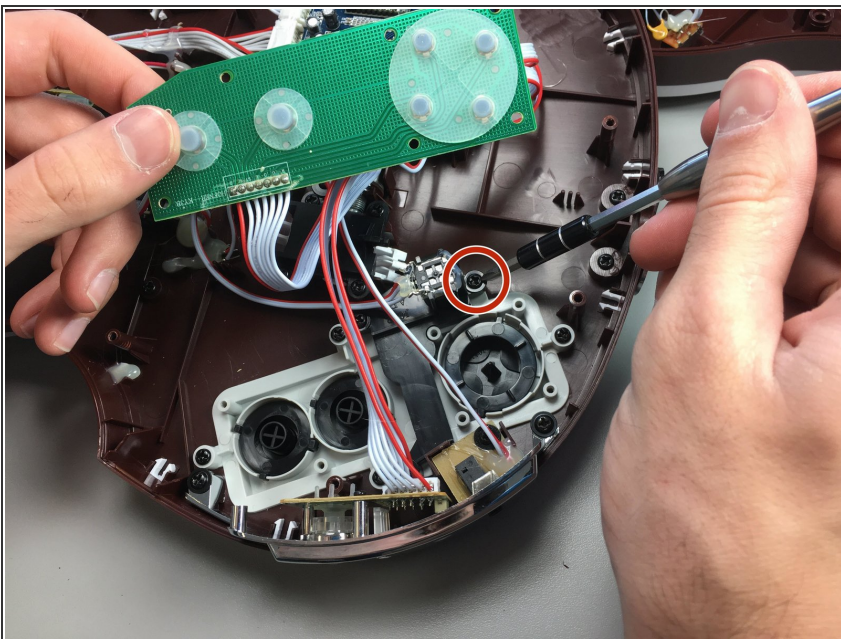
- Flip the bass on its back again, so that the strummer is facing down and the battery compartment is facing you.
- Pull off the back whole panel so that the bass is now open.

## Step 4 — Toggle Switch



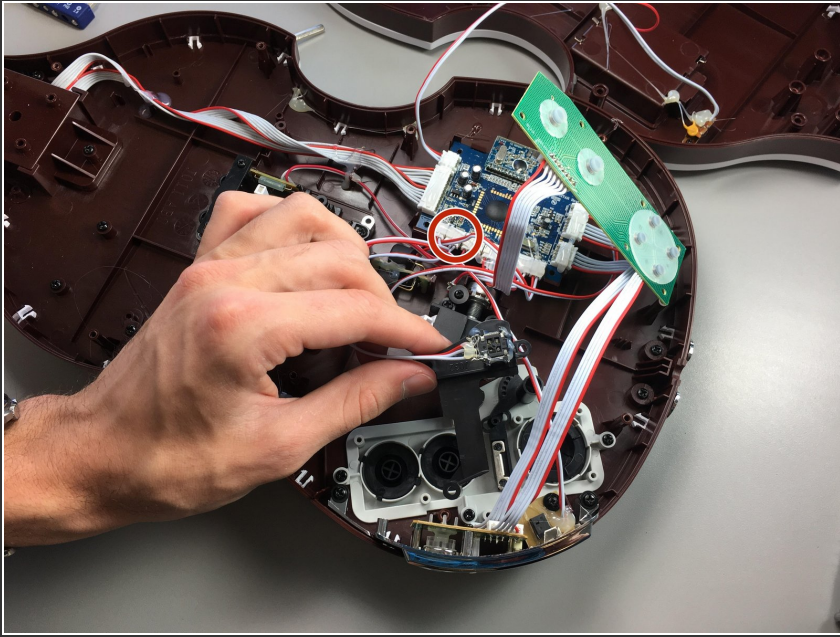
- With a J1 Phillips screwdriver, remove the six 5mm on the cover.
- Remove the cover.

## Step 5



- Use a J1 Phillips screwdriver to remove the 10mm screw on the toggle switch.

## Step 6



- Remove the wire connecting the toggle switch to the blue circuit board.
- Remove the toggle switch.

To reassemble your device, follow these instructions in reverse order.