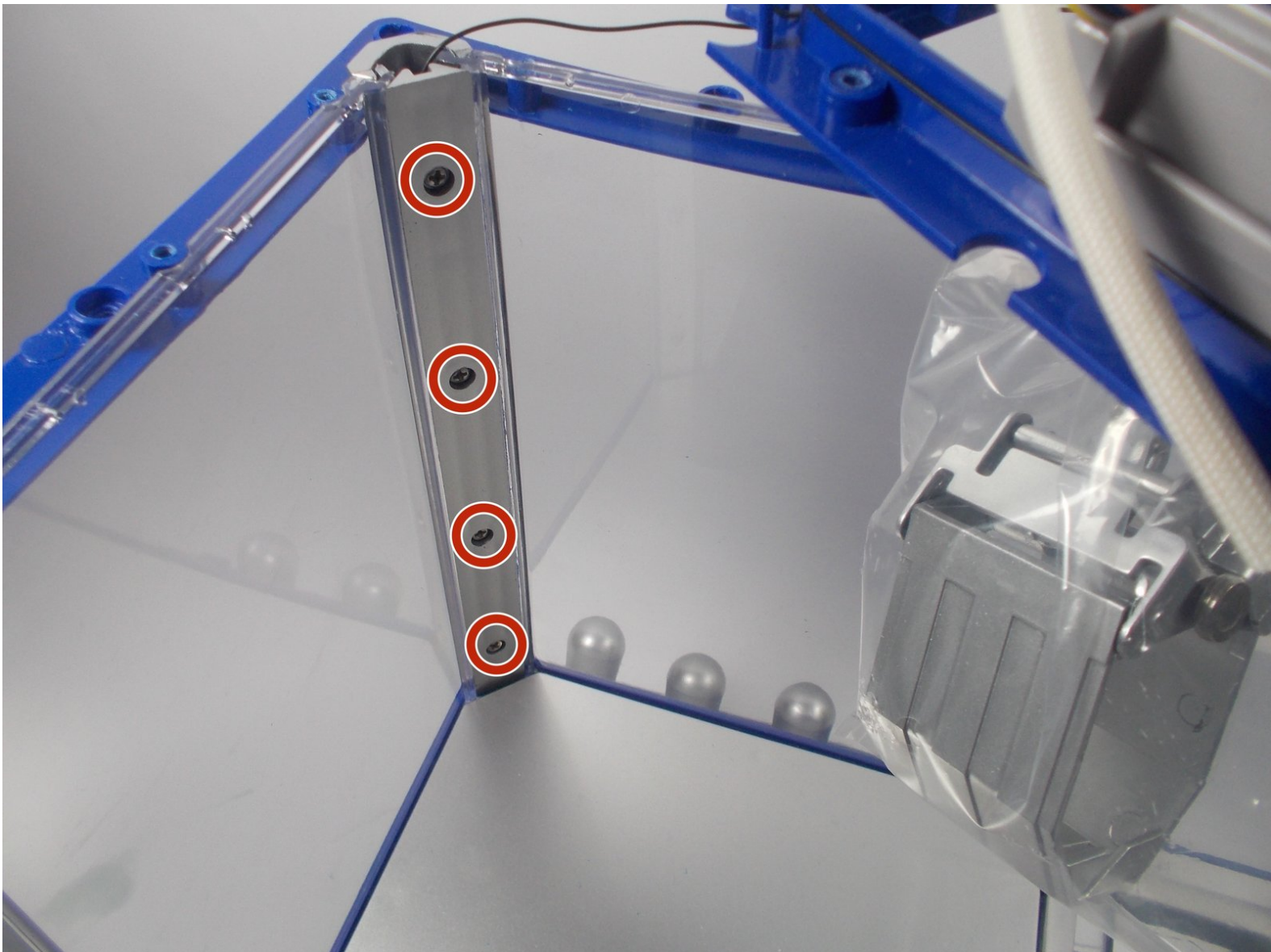




The Claw Case Replacement

This guide will assist users in replacing a broken or damaged clear plastic case.

Written By: Alain Pierre



INTRODUCTION

If the clear plastic case on your claw device is broken or damaged, it can easily be replaced. This required the opening of the top cover of your claw device in order to access the clear plastic panels. Using this easy to follow replacement guide will make case replacement an easy task.



TOOLS:

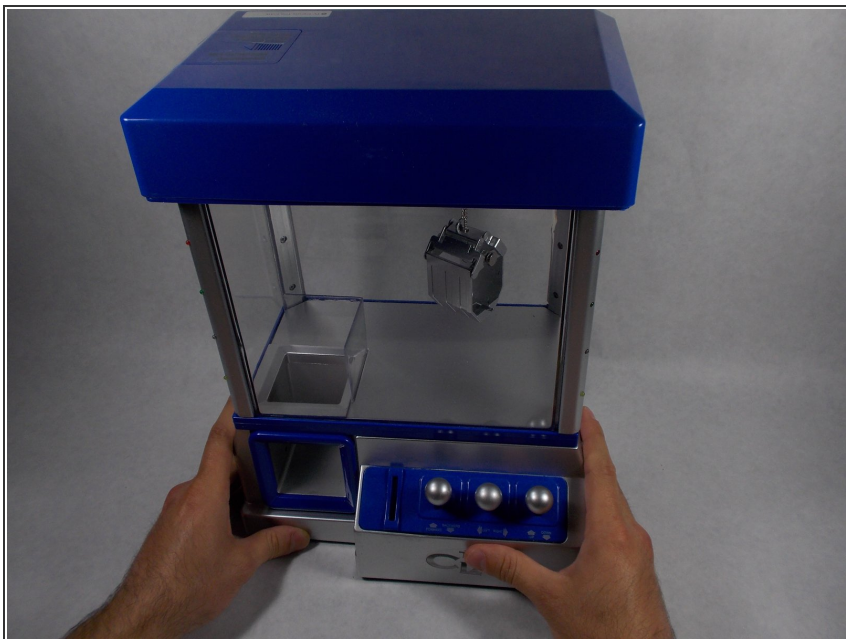
- [Phillips #1 Screwdriver](#) (1)



PARTS:

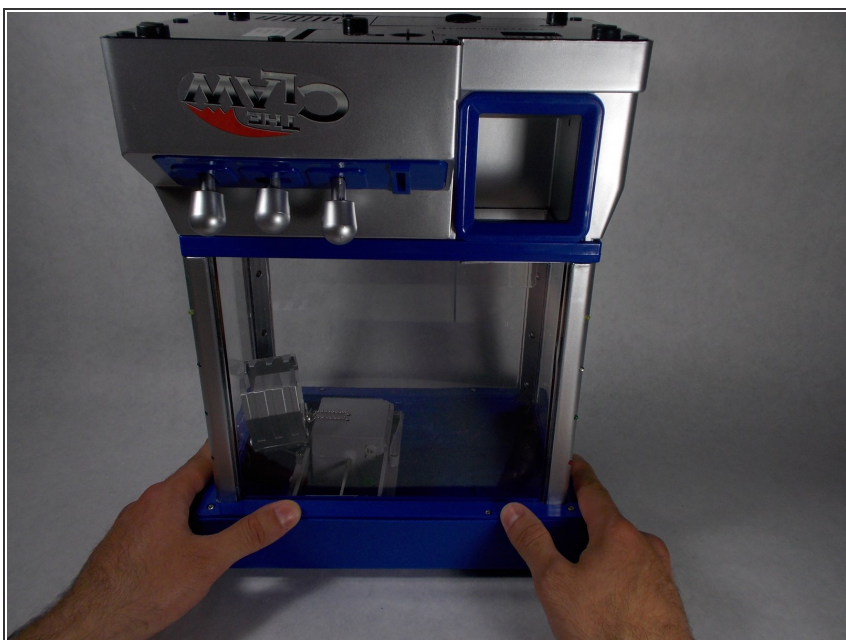
- [Clear Plastic Panel](#) (1)

Step 1 — Top Cover



- Place The Claw machine in the up-right position with the control knobs facing you.

Step 2



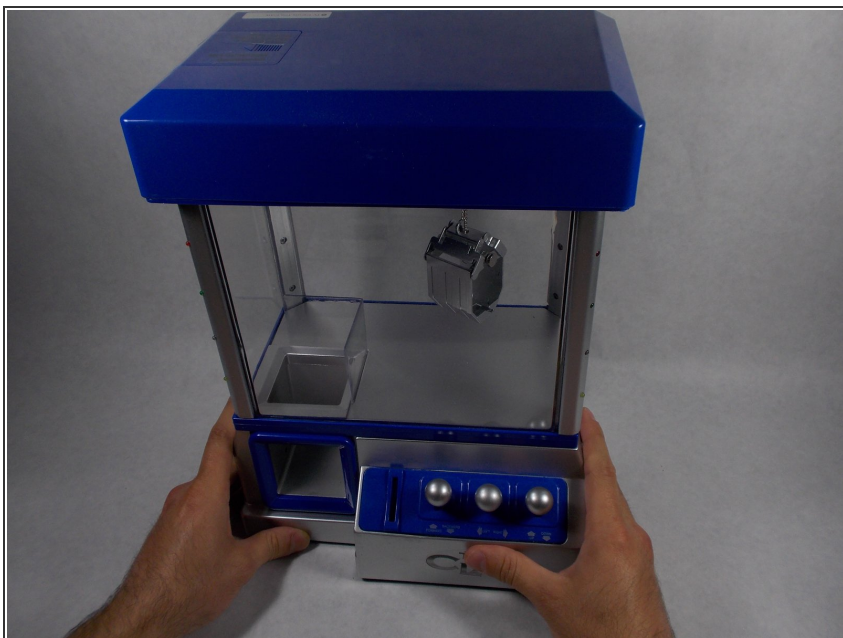
- Turn The Claw machine upside-down placing the top cover on the surface of your work area.

Step 3



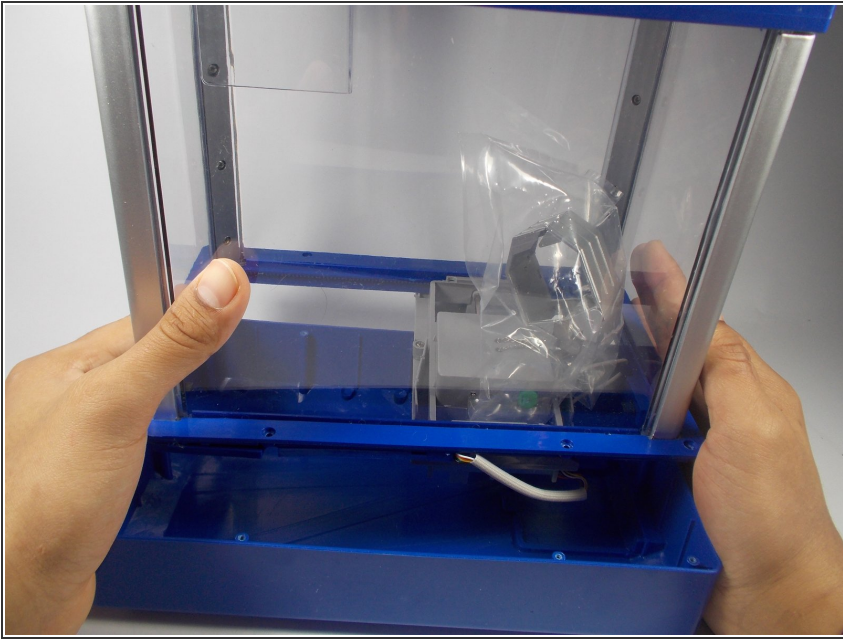
- Remove all ten 6mm phillips #1 screws underneath the top cover using your #1 phillips head screwdriver.
- ⓘ It is helpful to choose a clear, well lit work space. There are multiple tiny screws that are easy to lose.

Step 4



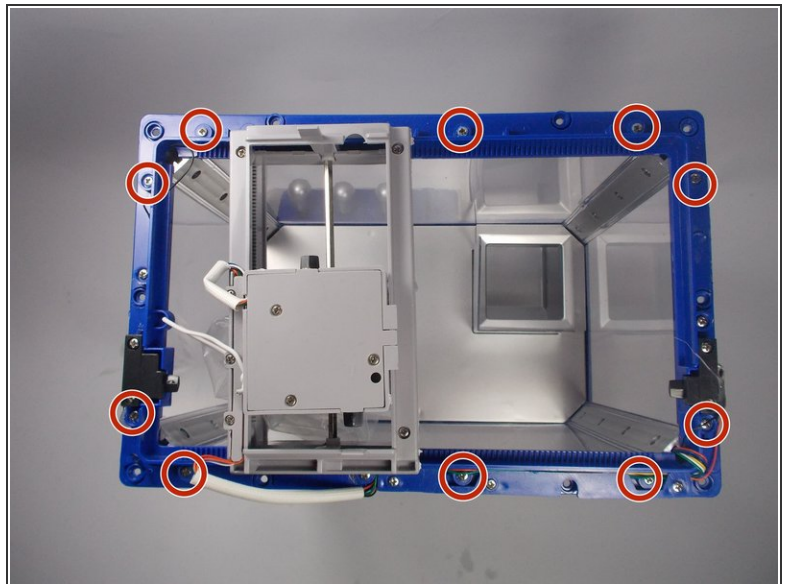
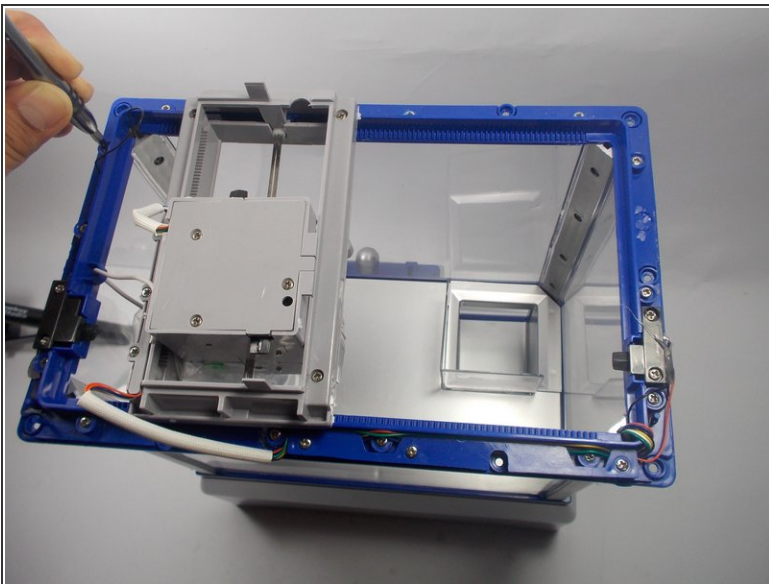
- Turn The Claw machine back to the upright position with controls facing you.

Step 5



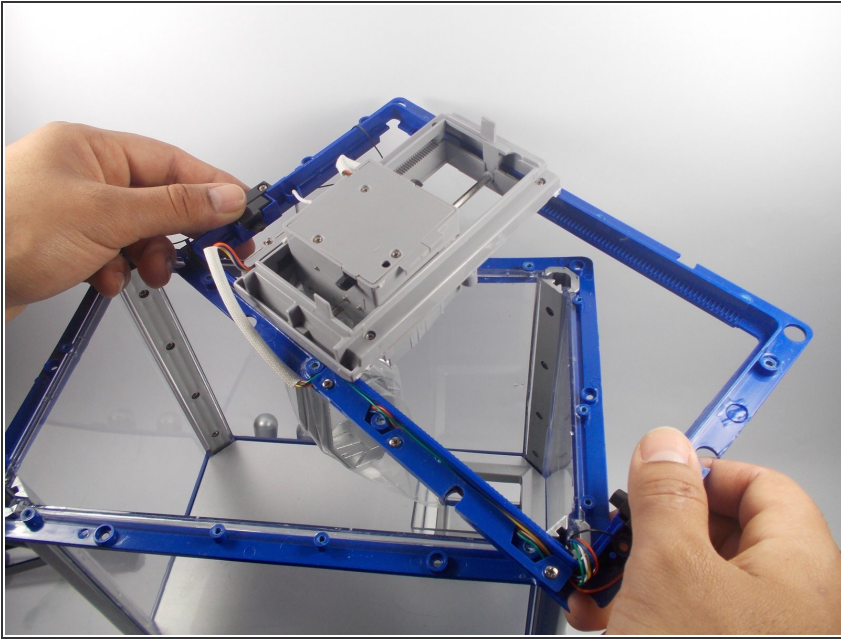
- Remove the top cover of The Claw machine.

Step 6



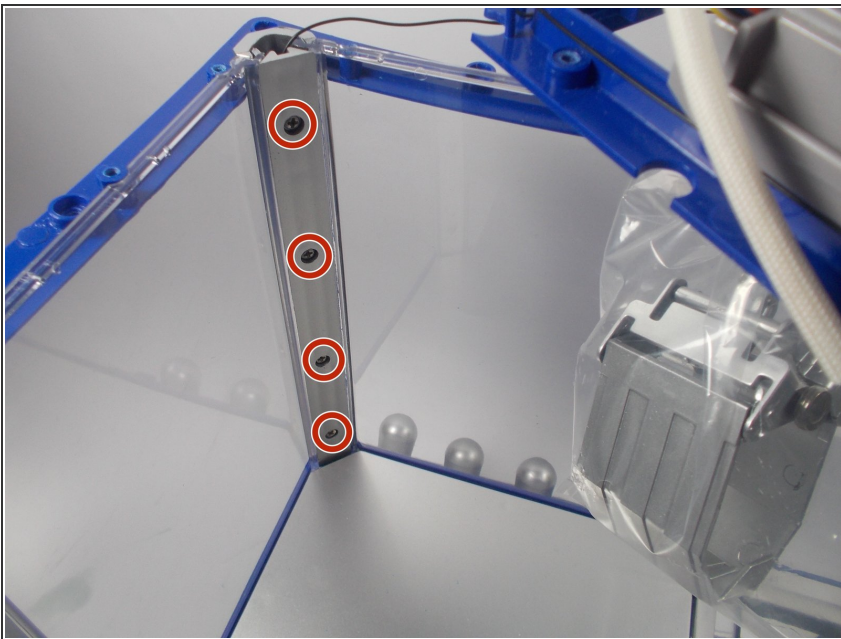
- Remove the ten 6 mm phillips #1 screws from the top flange.

Step 7



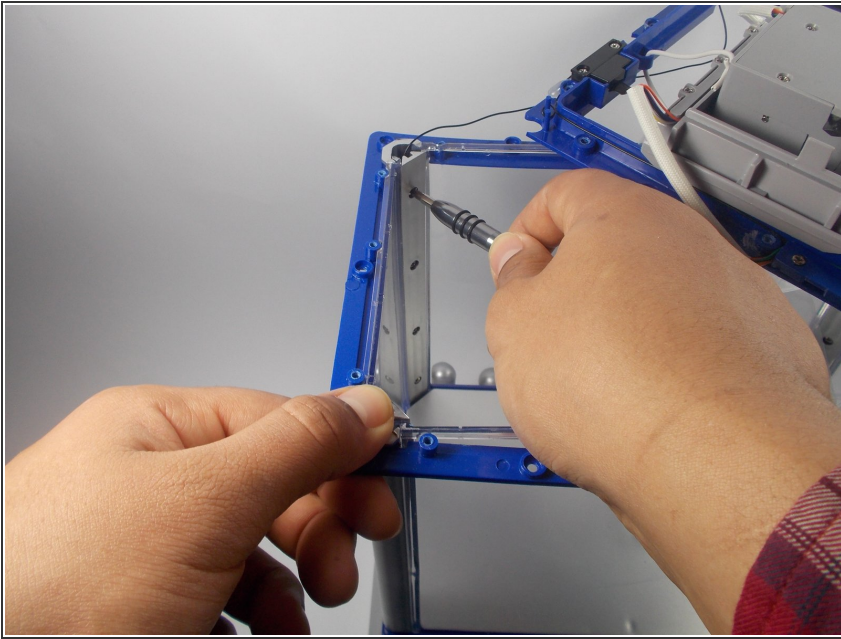
- Lift the flange upward and off to the side of the machine.
- ⓘ There is enough wire connecting the flange to the machine that you will not need to cut the wire. The flange can be moved off to the side of the machine while you are working.
- ⚠ Cutting or ripping out the wire will cause damage to the machine so try not to put much tension on the wire.

Step 8 — Case



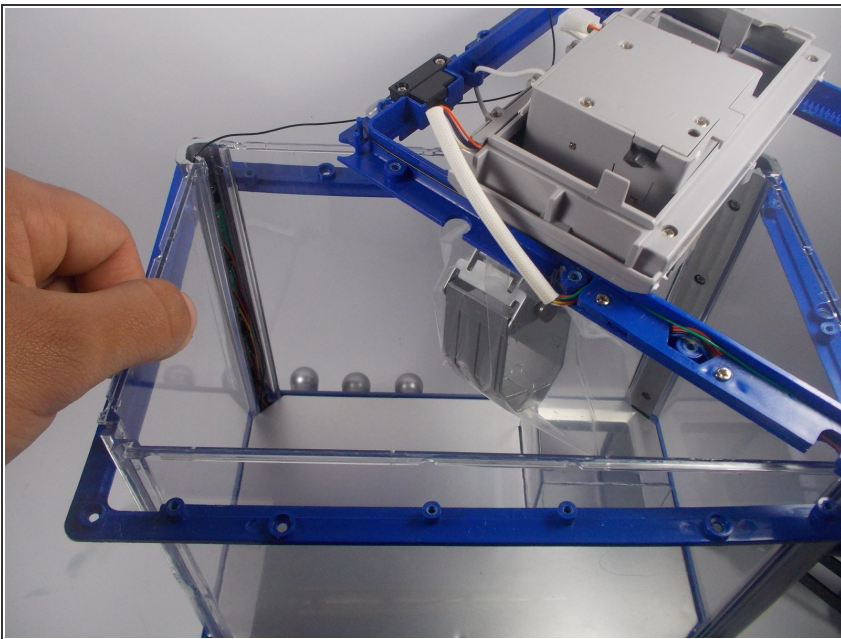
- The glass you intend to replace will have four 6mm #1 phillips head screws on either side located in the silver corner pieces.

Step 9



- Loosen all eight screws using your phillips head #1 screwdriver so that the glass can be removed.

Step 10



- Gently remove the broken clear plastic case.
- ★ Remember how the case sat into the frame so that you can seat the new case in the same way.

To reassemble your device, follow these instructions in reverse order.