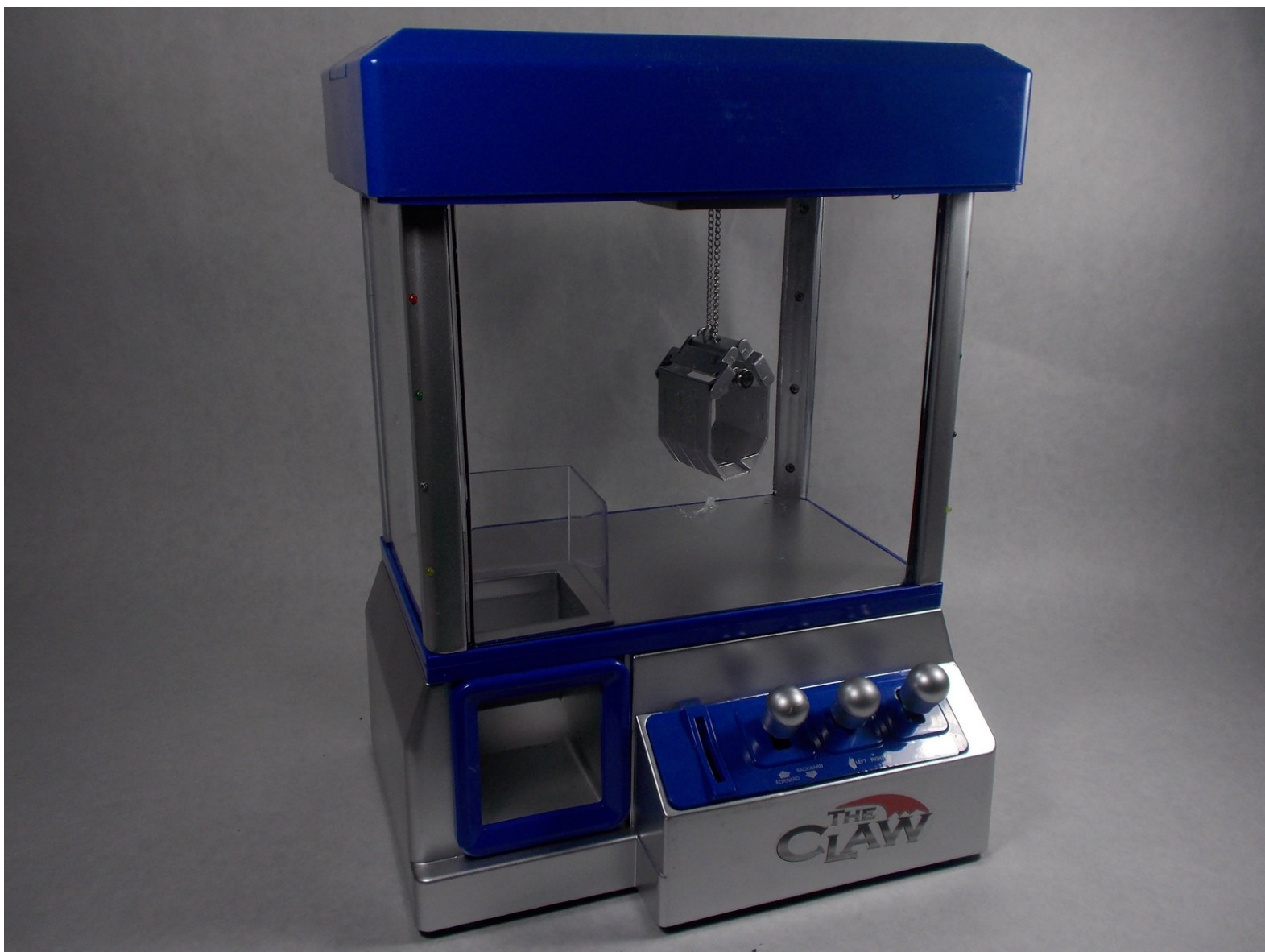




# The Claw Item Replacement

This guide was created to assist users in replacing the candy or toys inside the claw machine.

Written By: Alain Pierre



## INTRODUCTION

After repeated use of the claw machine, eventually you will run out of toys or candy to grab. In order to complete this task you will need to remove the top cover of your claw machine. Follow this user friendly guide to assist you with this task.



### TOOLS:

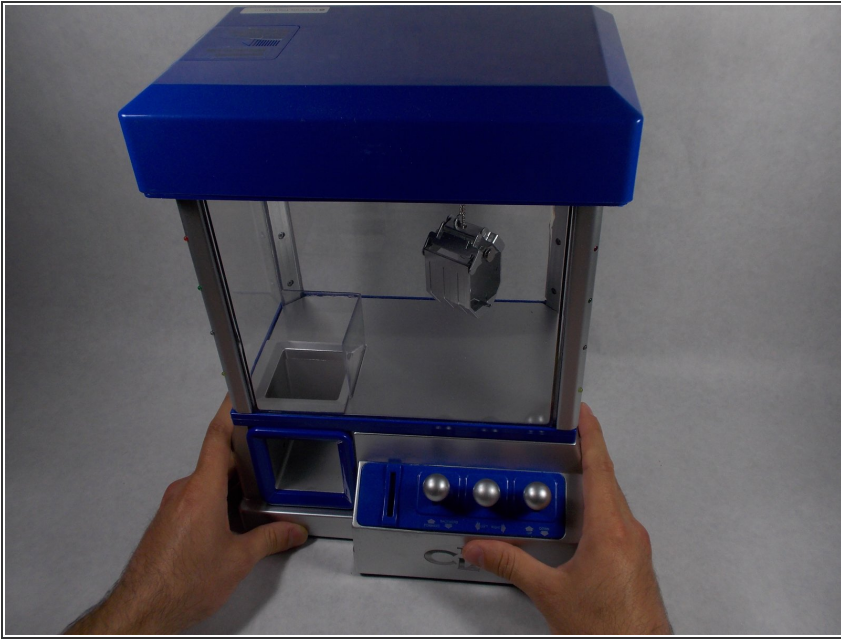
- [Phillips #1 Screwdriver](#) (1)



### PARTS:

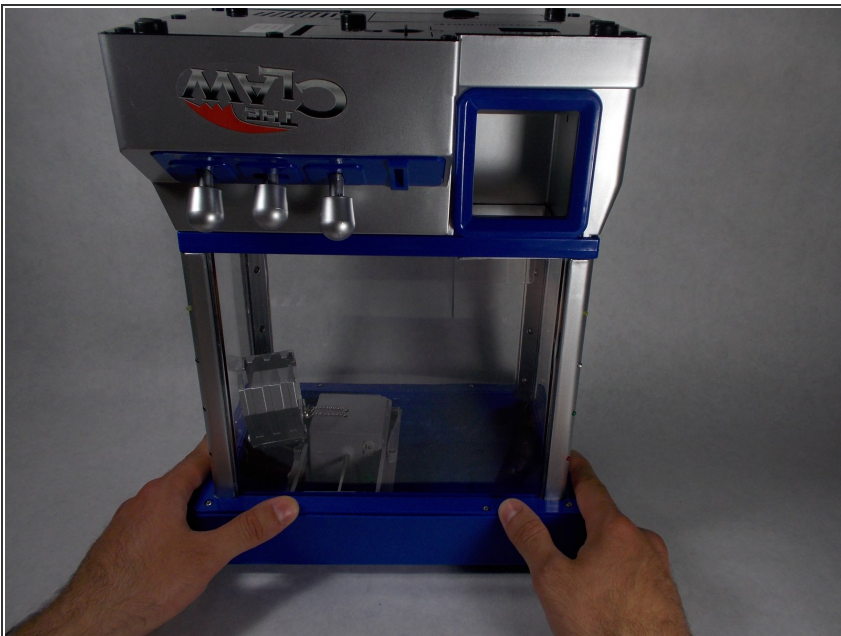
- [Candy](#) (1)
- [Toys](#) (1)

## Step 1 — Top Cover



- Place The Claw machine in the up-right position with the control knobs facing you.

## Step 2



- Turn The Claw machine upside-down placing the top cover on the surface of your work area.

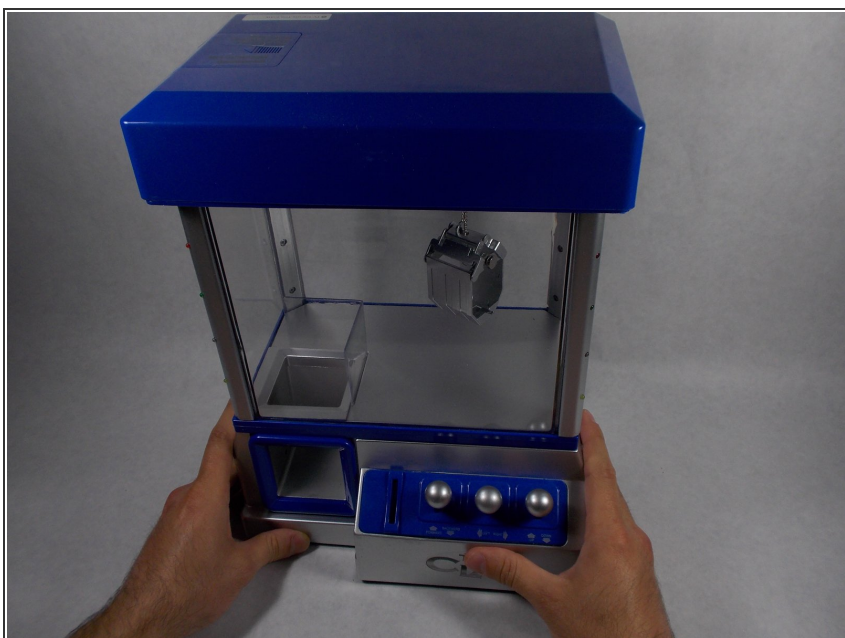


## Step 3



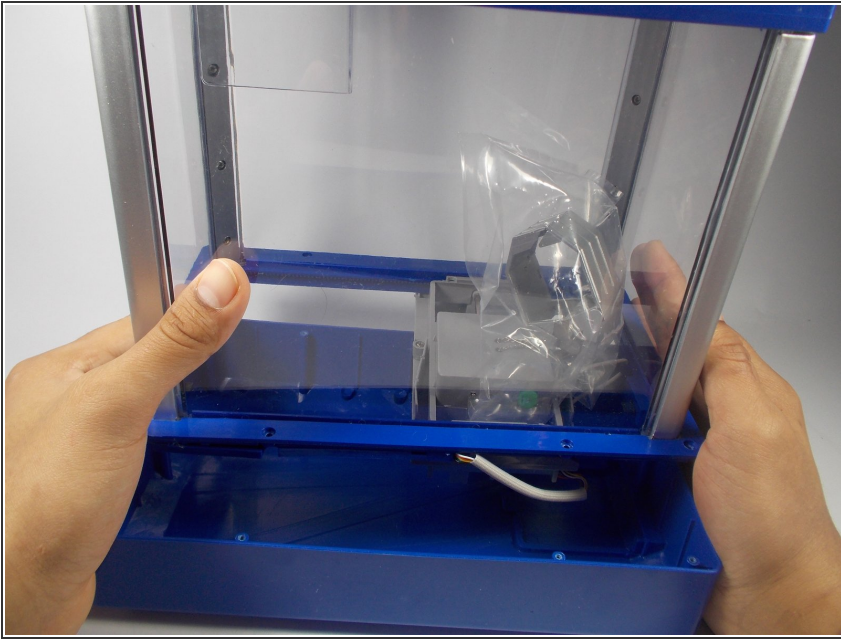
- Remove all ten 6mm phillips #1 screws underneath the top cover using your #1 phillips head screwdriver.
- ⓘ It is helpful to choose a clear, well lit work space. There are multiple tiny screws that are easy to lose.

## Step 4



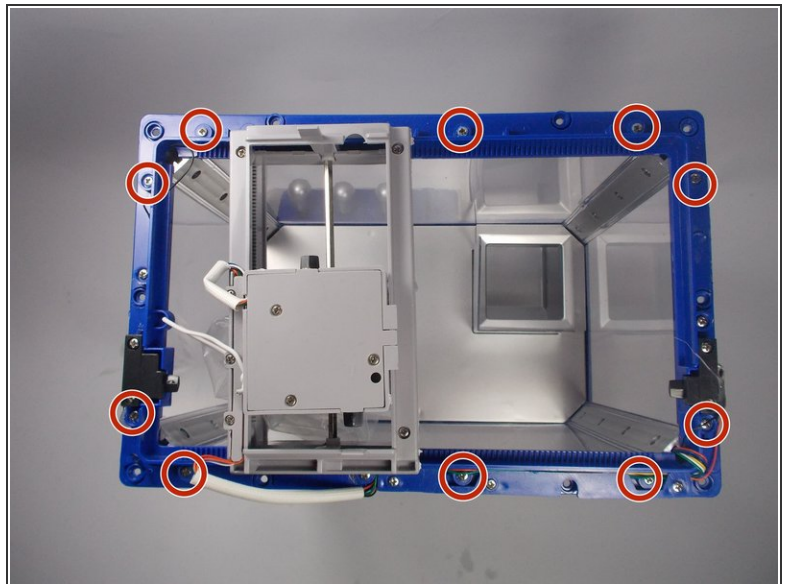
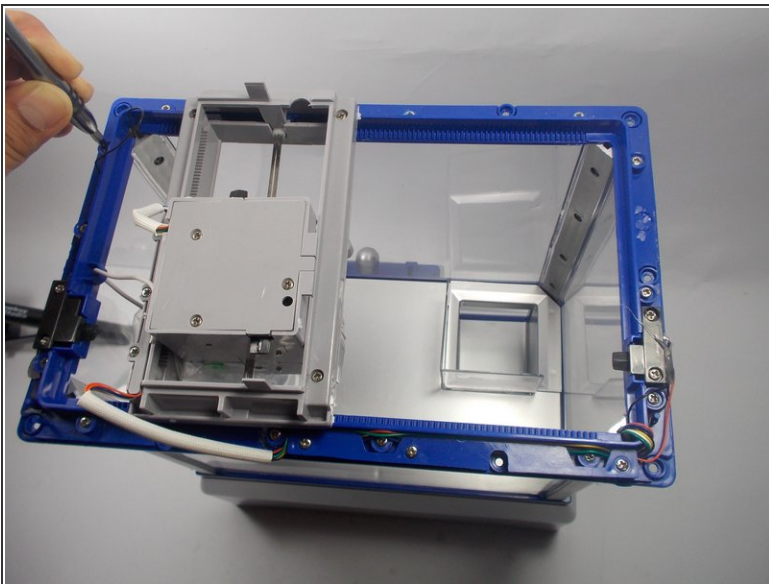
- Turn The Claw machine back to the upright position with controls facing you.

## Step 5



- Remove the top cover of The Claw machine.

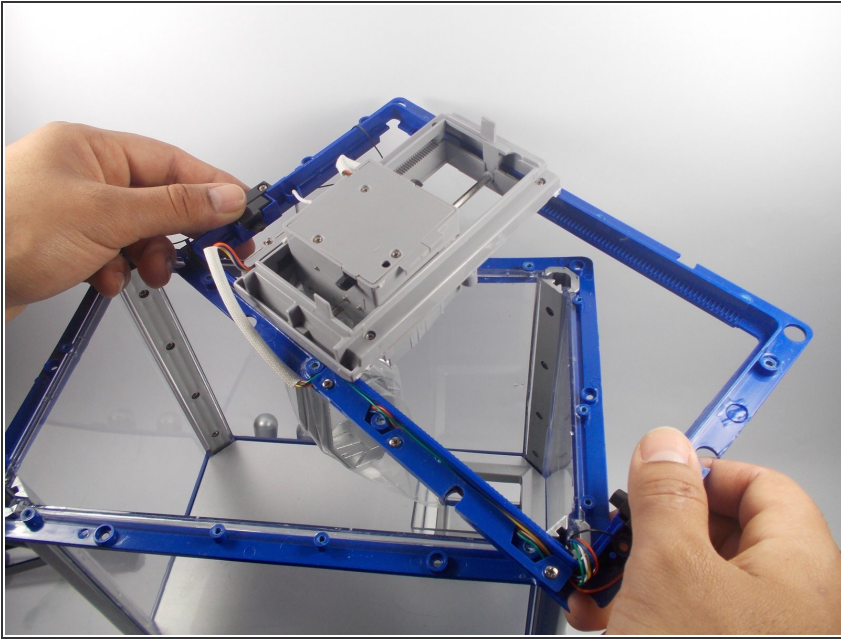
## Step 6



- Remove the ten 6 mm phillips #1 screws from the top flange.

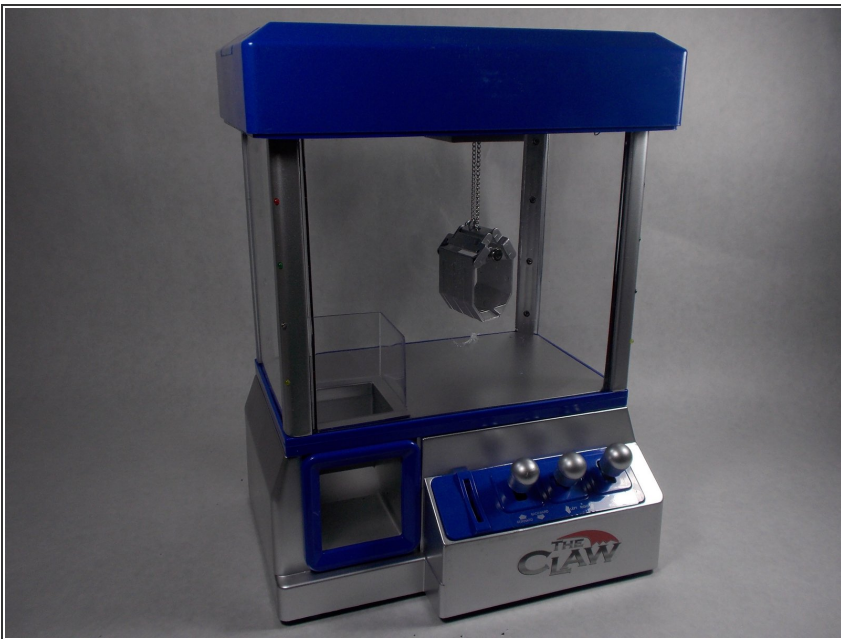


## Step 7



- Lift the flange upward and off to the side of the machine.
- ⓘ There is enough wire connecting the flange to the machine that you will not need to cut the wire. The flange can be moved off to the side of the machine while you are working.
- ⚠ Cutting or ripping out the wire will cause damage to the machine so try not to put much tension on the wire.

## Step 8 — Overfill



- After emptying out contents have The Claw machine facing you

## Step 9



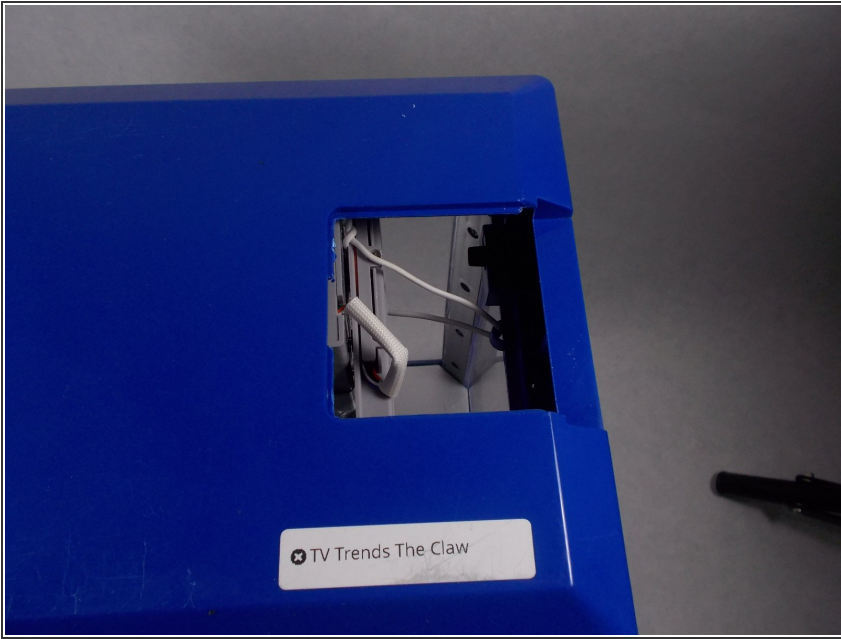
- View the Claw machine from the top

## Step 10



- Place thumb on grip section and pull away from the Claw machine.

## Step 11



- Place items in the Claw machine.

To reassemble your device, follow these instructions in reverse order.