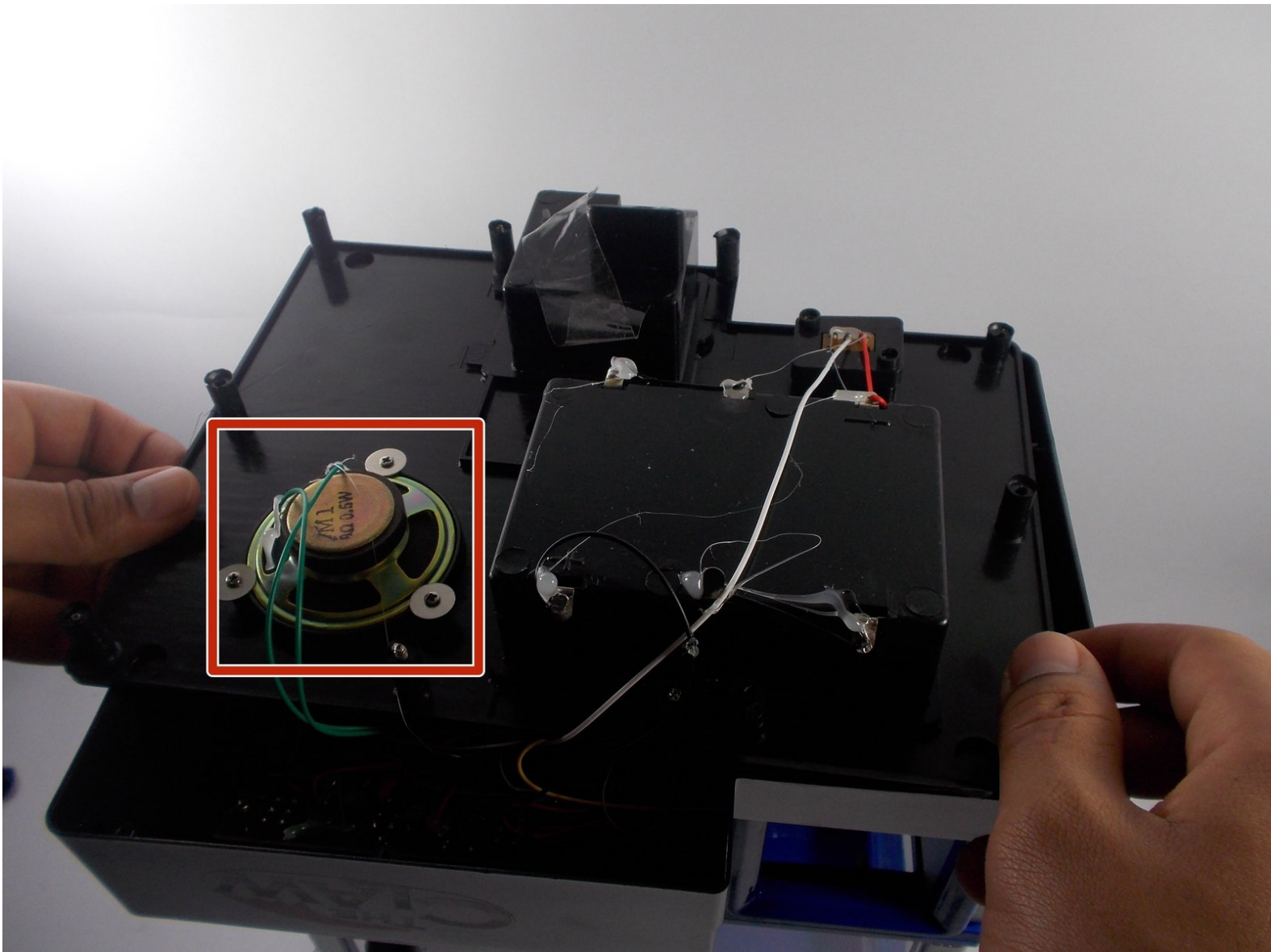




The Claw Music Player Cleaning

This guide is to assist users in the proper cleaning of the speakers inside the claw machine.

Written By: Alain Pierre



INTRODUCTION

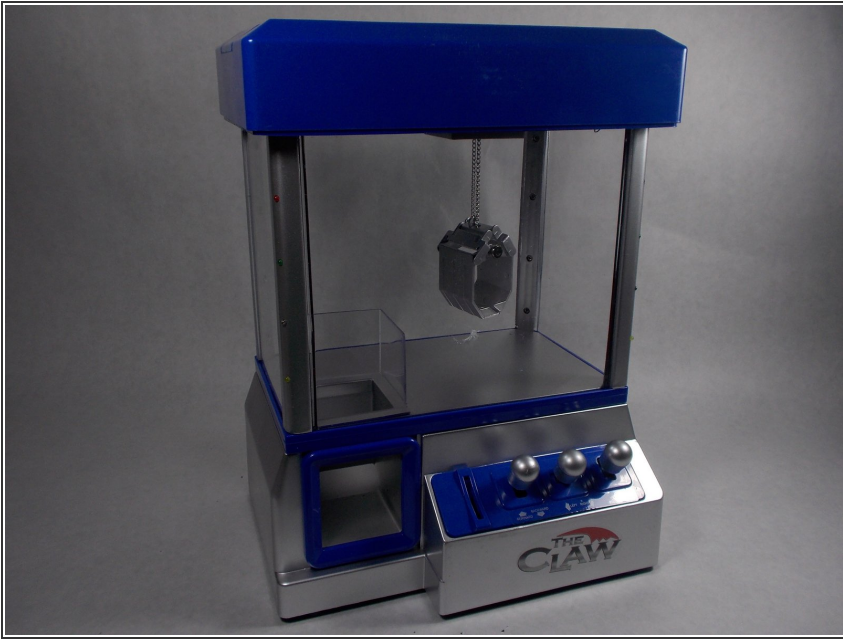
In certain cases the device will stop playing music or begin to play distorted music. If this is the case with your claw device, you probably need to open the bottom of the device and clean off the speaker or clean out the sound port on the bottom cover. This guide will assist you in taking the proper measure to do so.



TOOLS:

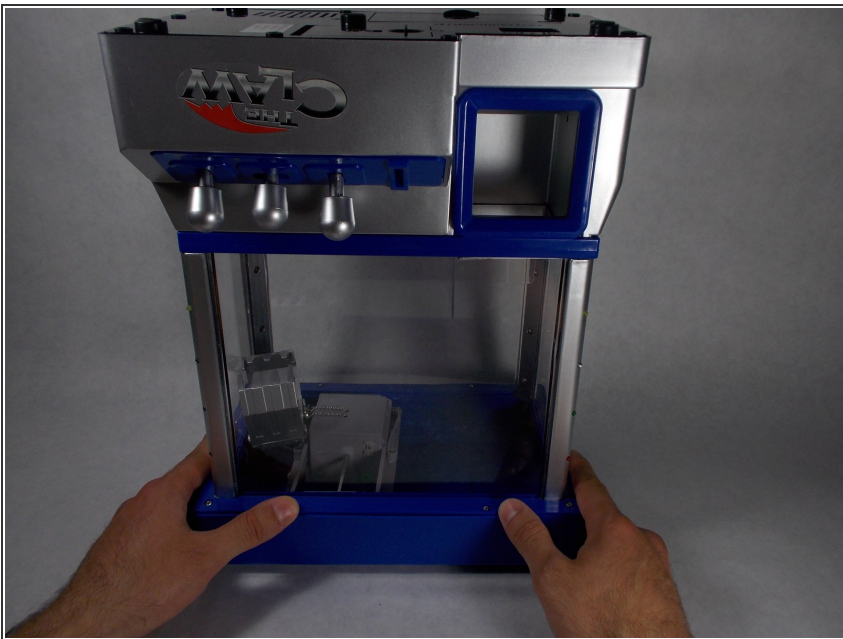
- [Phillips #0 Screwdriver](#) (1)
 - [Air Duster](#) (1)
 - [Precision Tweezers Set](#) (1)
-

Step 1 — Bottom Cover



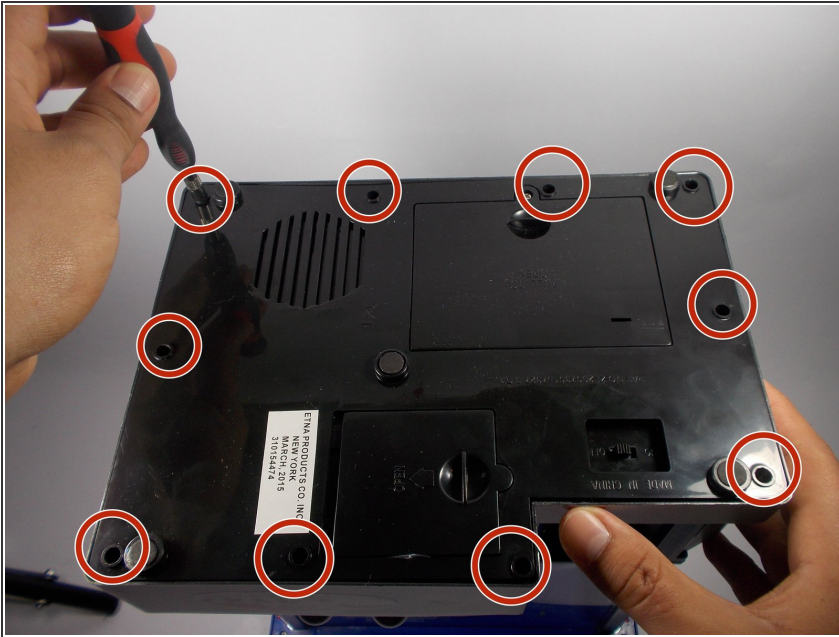
- Place The Claw in upright position with controls facing you.

Step 2



- Gently flip The Claw machine upside down with the controls facing you.

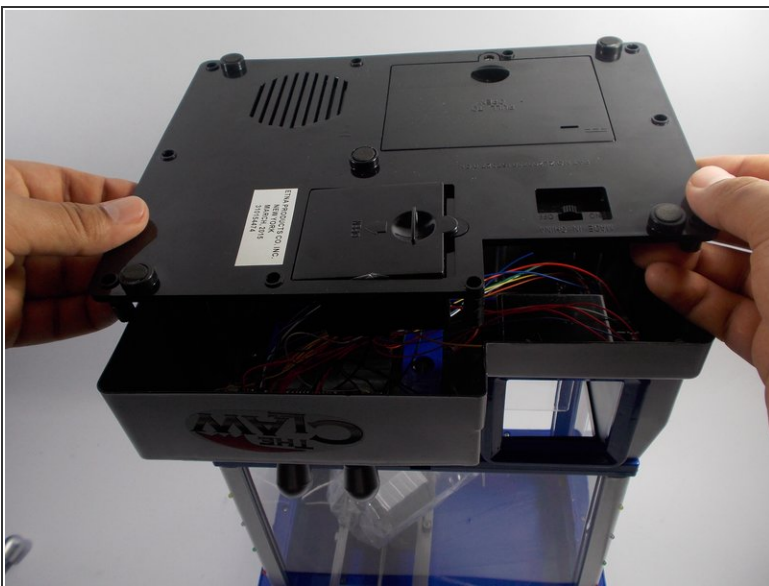
Step 3



- Remove all ten screws from the bottom cover using a Phillips #1 screwdriver.

ⓘ You will need a screwdriver with a long thin neck to fit in the screw holes.

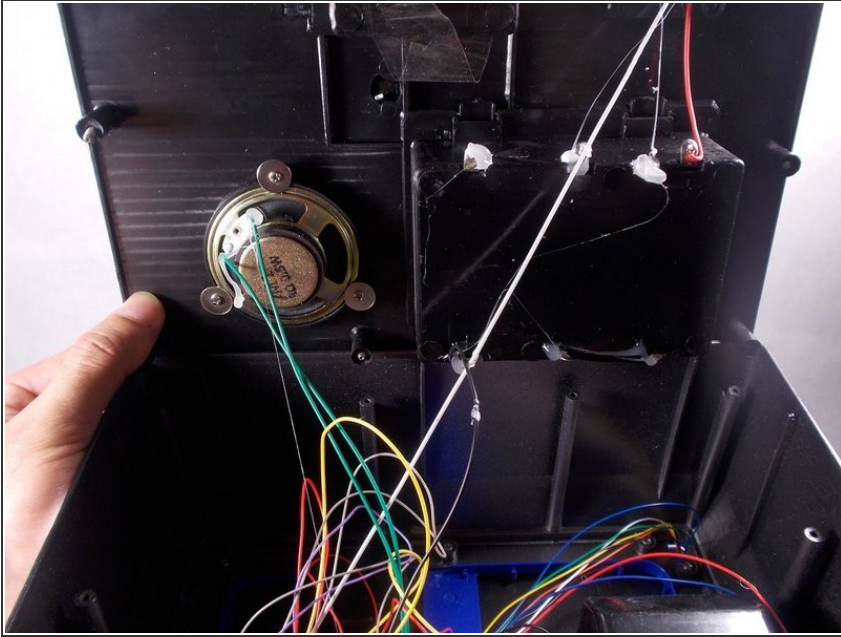
Step 4



- Slide the bottom cover off to the side.

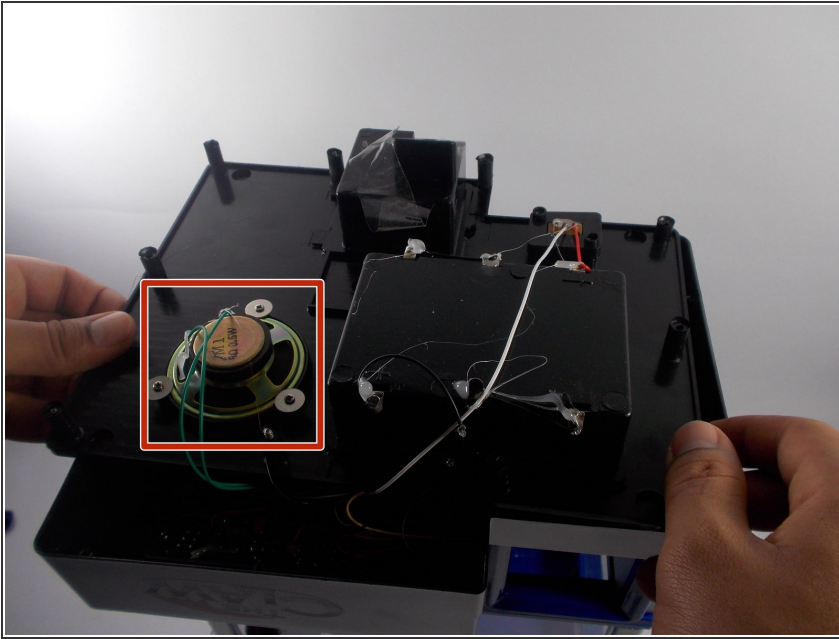
⚠ Do not completely remove bottom cover as it is still connected to wires.

Step 5



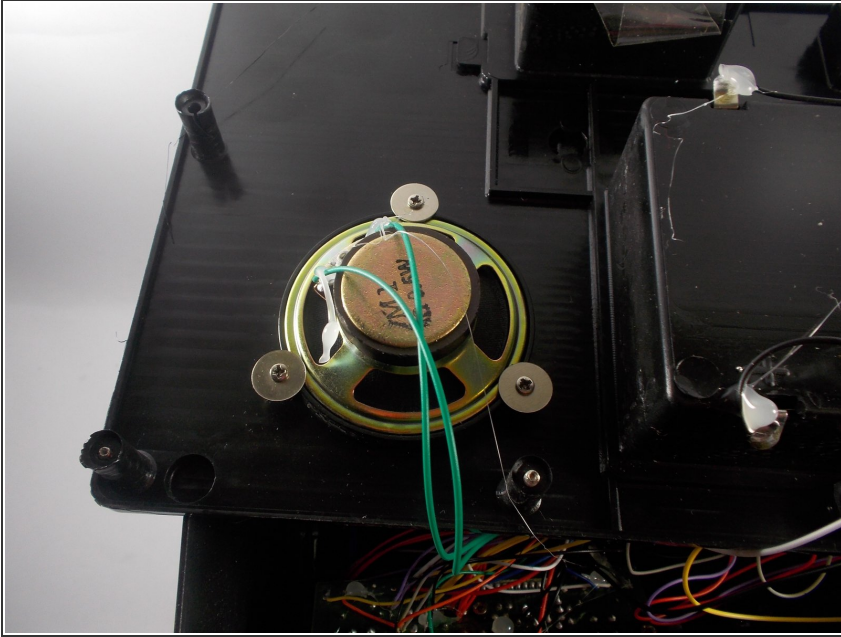
- ❗ Complete removal of the bottom cover is not necessary, however if you feel you need to take the cover completely off the machine to complete your task it can be done by the following process.
- You will need to cut the two green wires attached to the music player.
- Then you will need to cut the white wire that leads to the battery compartment.
- Finally you will need to cut the black wire leading to the battery compartment as well.
- 🔧 The complete removal of the bottom cover requires the cutting and soldering of wires. For help with soldering reference: [How To Solder and Desolder Connections](#).


Step 6 — The Claw Music Player Cleaning



- Once you have removed the bottom cover you should have clear access to the music player.
- Locate the music player and check to see if it is visibly dirty or clogged.
- ⓘ If there is any amount of dust or dirt on the music player it should be cleaned.
- Using the straw that comes with your air duster, aim the duster in a way that the air will push the dust away from the music player.
- ⓘ If cleaning the music player is not enough, you may need to refer to the [Music Player Replacement Guide](#)

Step 7



-  You DO NOT want to force the dust further into the music player by directing the air into the player.
- If there are any large pieces of lint or dust in the sound port, those can be removed with your precision tweezers.
 - Once you are certain you have removed all of the dust and dirt from the music player you should reassemble the device and test it.

To reassemble your device, follow these instructions in reverse order.