



The Motorola K1m cell phone Teardown

Written By: Kevin Galang



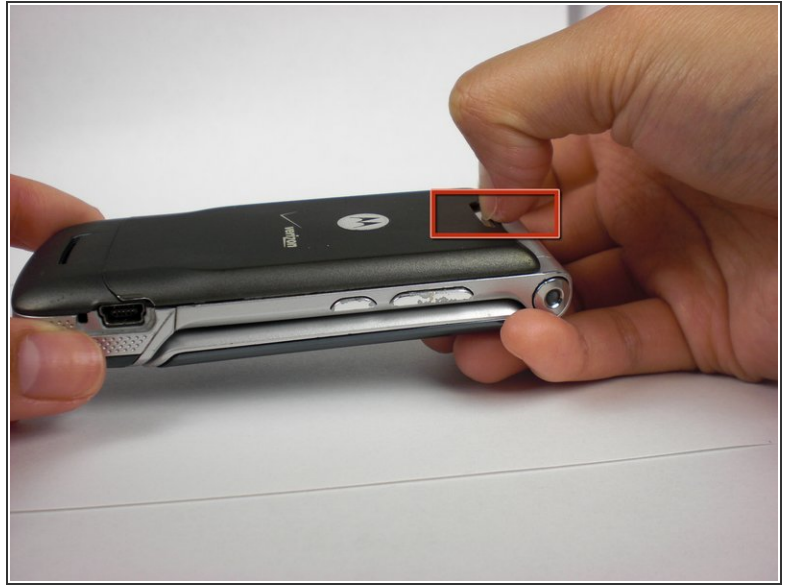
INTRODUCTION

This guide is for the complete teardown of the Motorola K1m cellphone. We will be starting from the back panel of the the Motorola K1m cellphone then working our way towards the front of the cellphone

TOOLS:

- [Spudger](#) (1)
 - [T5 Torx Screwdriver](#) (1)
 - [Tweezers](#) (1)
-

Step 1 — The Motorola K1m cell phone Teardown



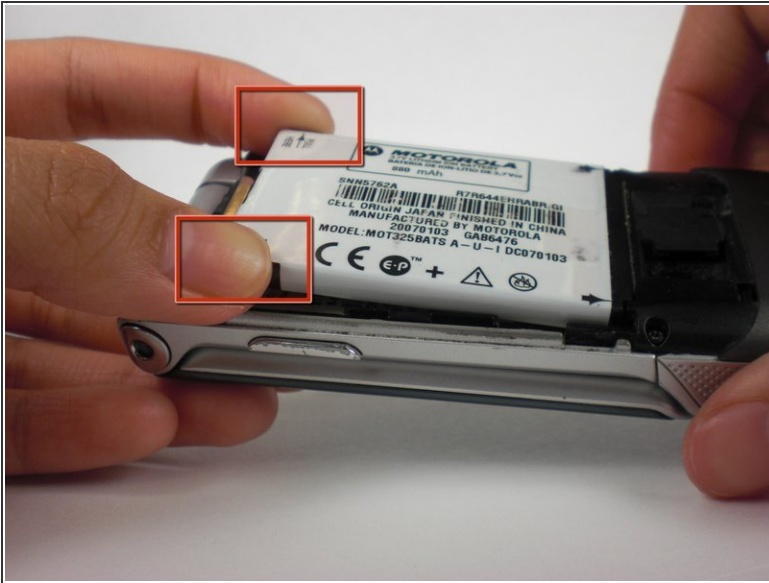
- Push down on the silver tab located at the top center of the back of the Motorola K1m cellphone.

Step 2



- While pushing down on the silver tab, slide the back cover towards the silver tab.
- Remove the back cover.

Step 3



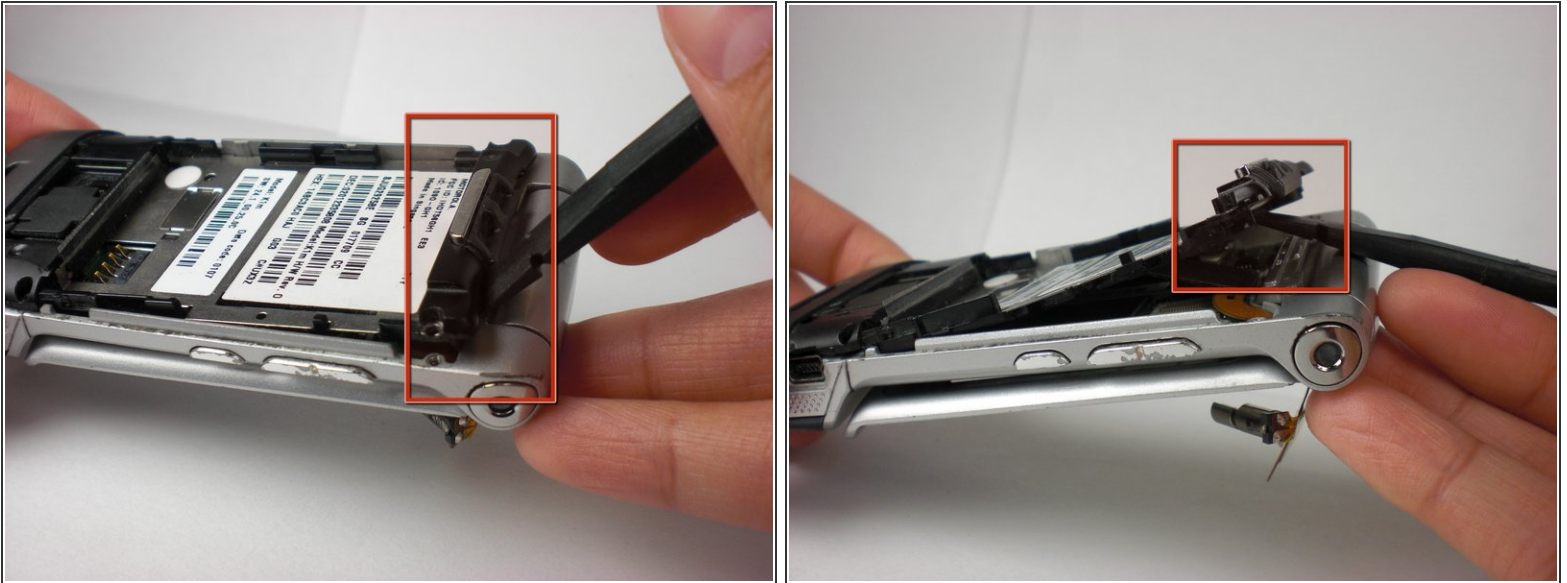
- Pull the battery from the top corners labeled "Pull Here" located on either side of the top of the battery.
- Remove the battery.

Step 4



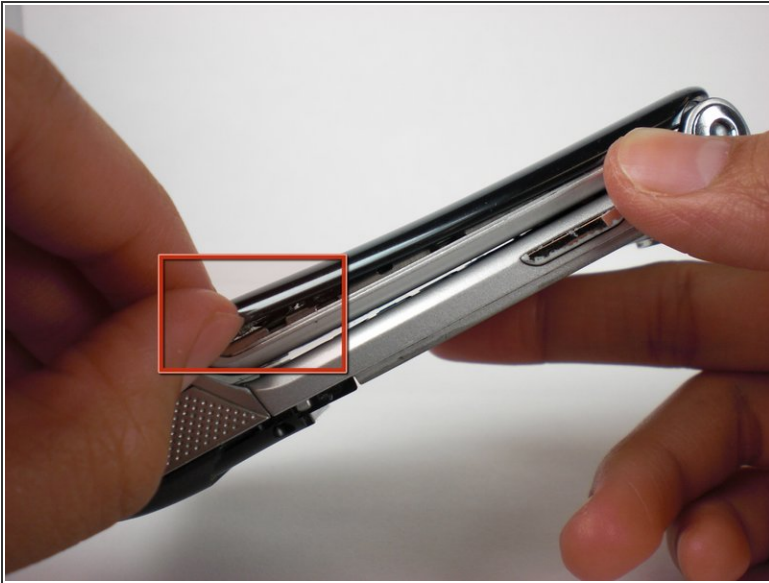
- Detach battery dock by removing the 4 black screws on each corner of the phone with a T5 Torx Screwdriver.

Step 5



- Lift up the battery dock where the hinges are located. Carefully insert the plastic spudger in between the battery dock and the back plate of the battery. (See the picture to locate the hinges)
- It is easiest to remove the battery dock when prying on the tabs.
- When removing the battery dock, a small white rubber piece might fall out. If this happens, simply place the piece of the rubber in the location it came from.
- Remove the battery dock.

Step 6

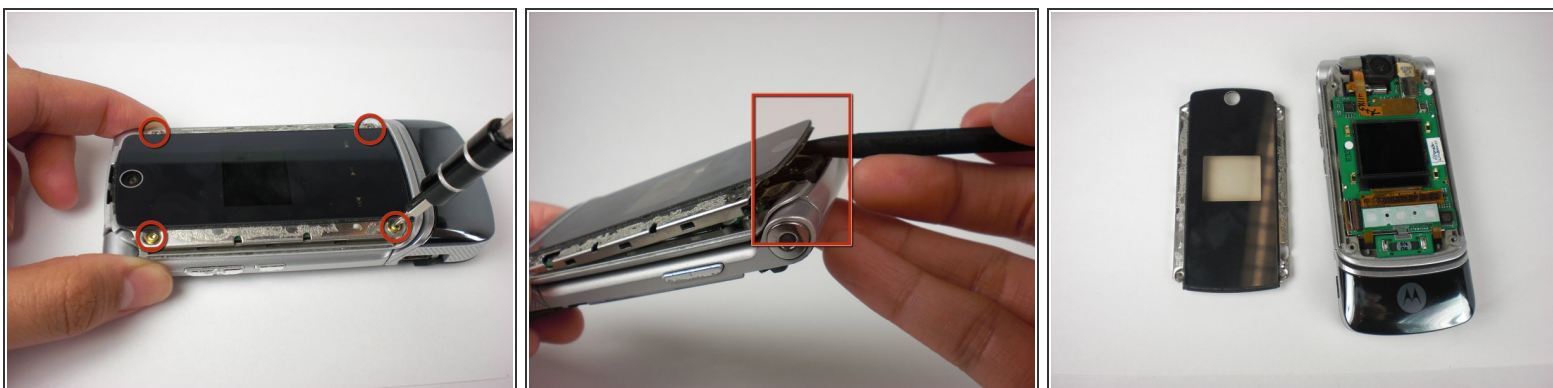


- Remove the trim piece.

⚠ Be very careful when dealing with the trim. It is very delicate, so be cautious when approaching this next part.

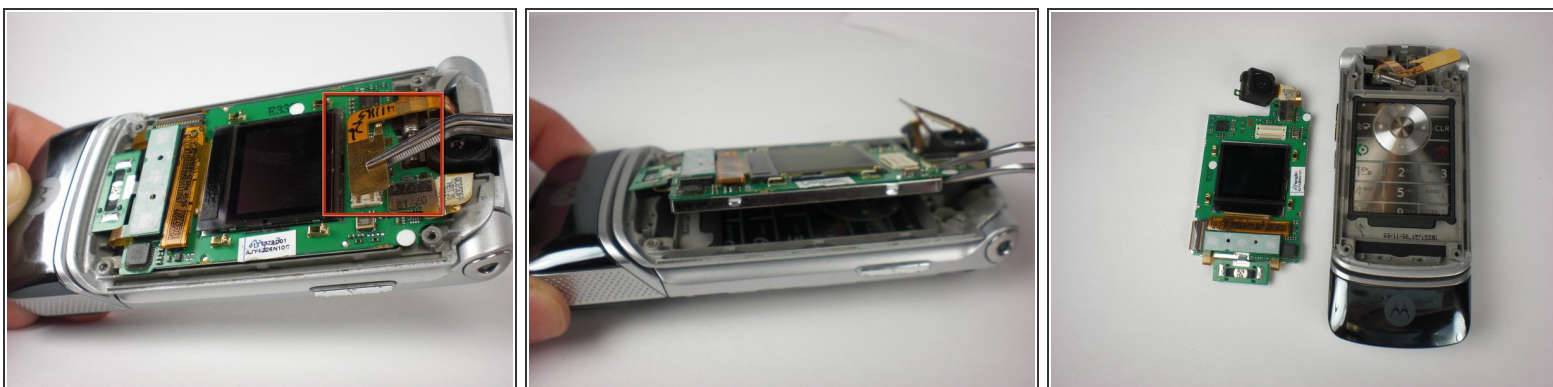
- Using your fingers or [The Spudger](#) to get under the trim. Start by applying enough force to pry the trim off.
- Be patient when trying to pry off the trim. The tape attaching the trim to the phone is very strong. Just be persistent and patient and it will eventually give.

Step 7



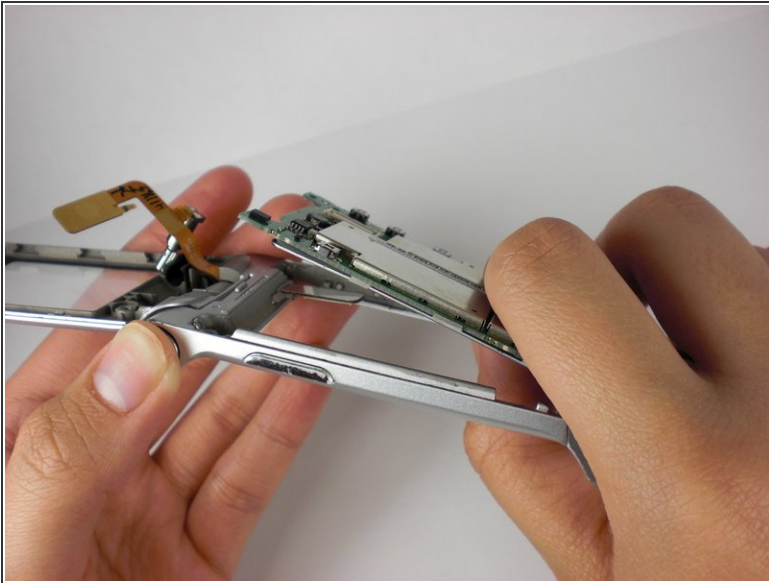
- Once you have removed the trim you will see 4 gold screws at the corners of the phone. Using a T5 Torx Screwdriver, remove the screws.
 - Gently, use [The Spudger](#) towards the edge of the phone, lift the face plate off.
- ⚠ Be careful during this step, the touch-sensitive keys and logic board (which is green) may remain attached to the face plate. Gently hold the chip board down as you lift the face plate.

Step 8



- Gently, with a tweezer or your fingers, lift the orange flex cable apart from the pin connector it is connected to.
- Once the flex cable has been unplugged, use a tweezer to remove the logic board by prying up.
- Gently remove the green logic board/LCD (Liquid Crystal Display) screen away from the phone.

Step 9



- Lift up the chip board from the bottom flip with your fingers.
- Gently pop of the keypad with your fingers.

Step 10



- The final result should look similar to this layout of the disassembled Motorola K1m.

