



The Pave Parisien Speaker: Battery replacement

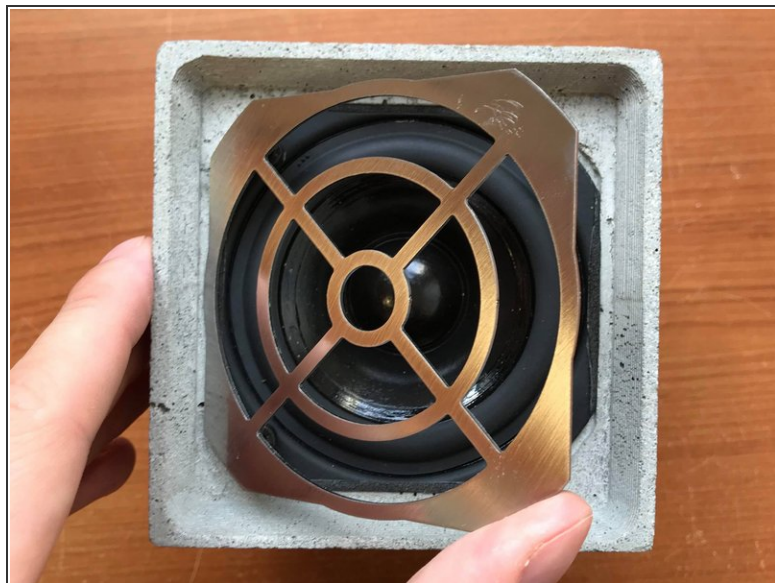
Written By: Le Pavé Parisien



INTRODUCTION

This tutorial will help you replace the battery of your Pave Parisien

Step 1 — Remove the grille



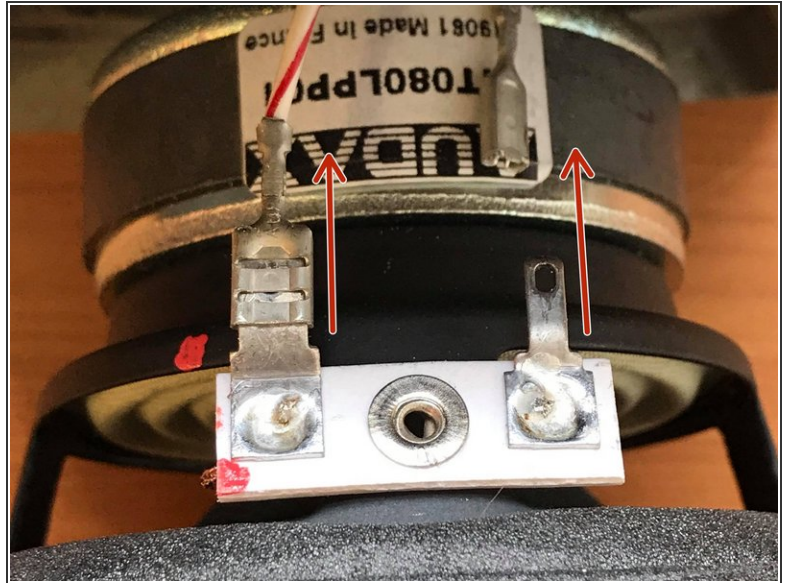
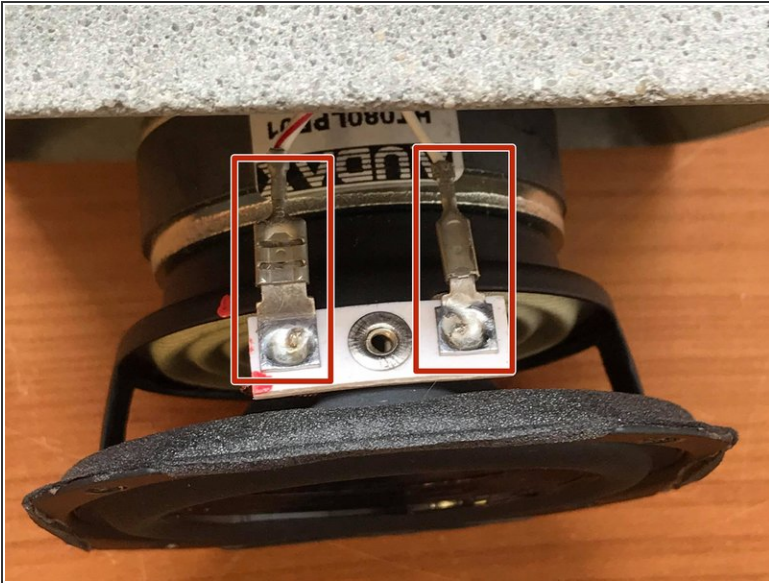
- Remove the protective grille by lifting one of the four corners.

Step 2 — Opening the speaker



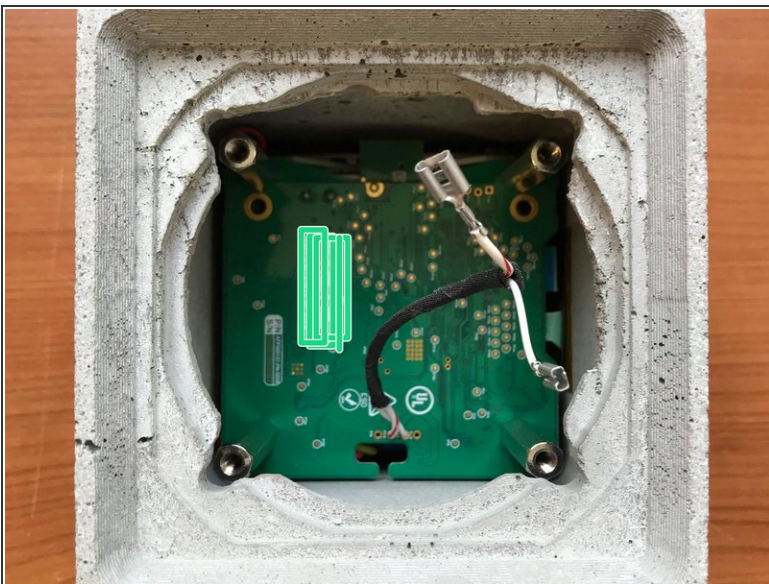
- Remove the four screws using a m4 allen wrench

Step 3 — Disconnecting the speaker



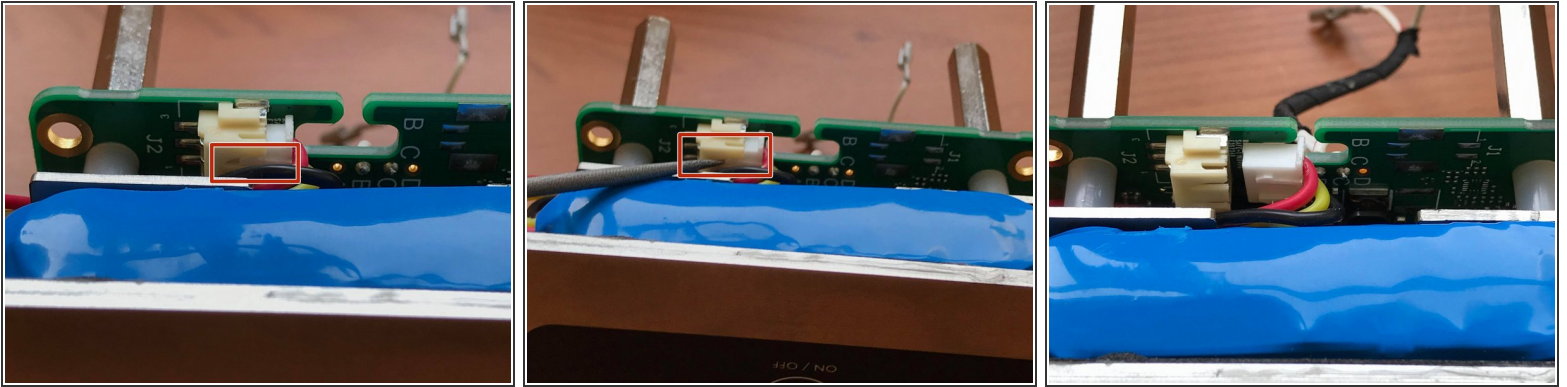
- Pull the speaker out a bit to access the connectors
- With light gentle movements, pull and disconnect the two cables from the connections

Step 4 — Pulling the board out of the case



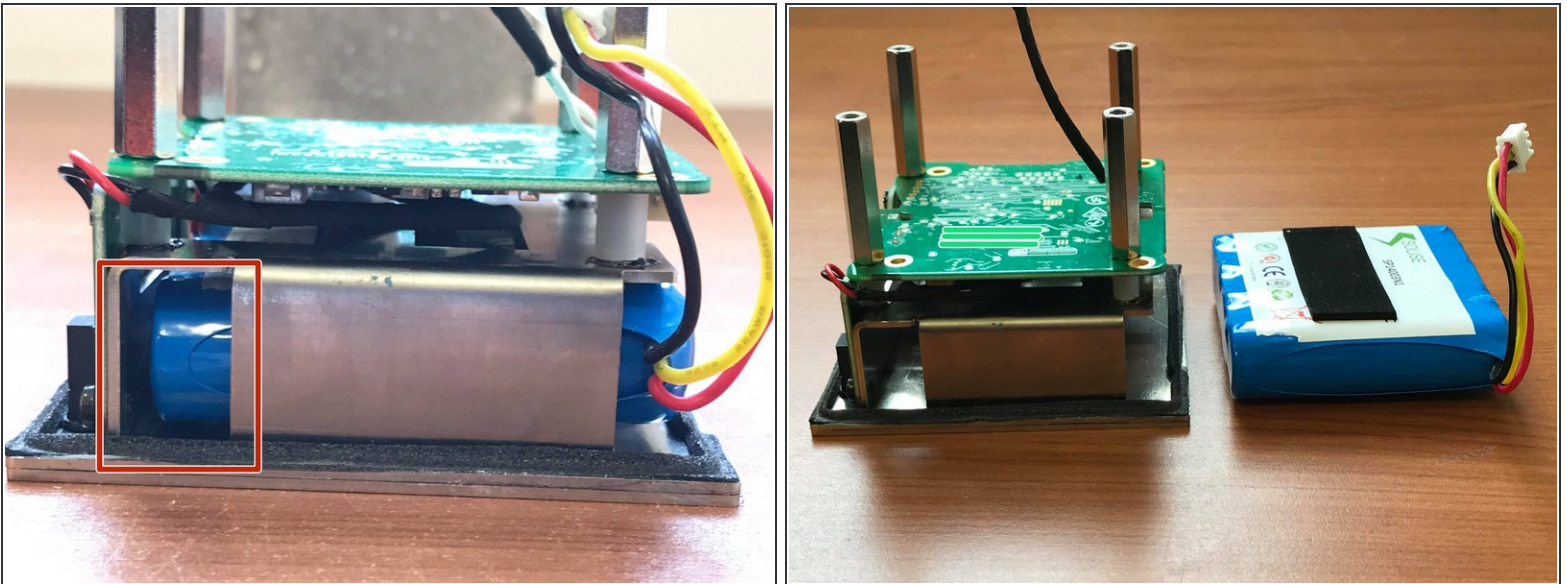
- Pull the speaker completely out of the recessed compartment
- Gently pull the board behind the speaker out and place on a flat surface

Step 5 — Disconnecting the battery



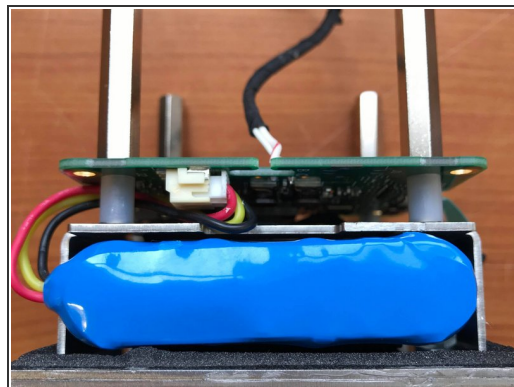
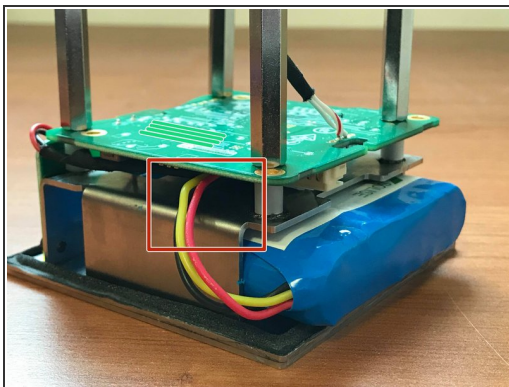
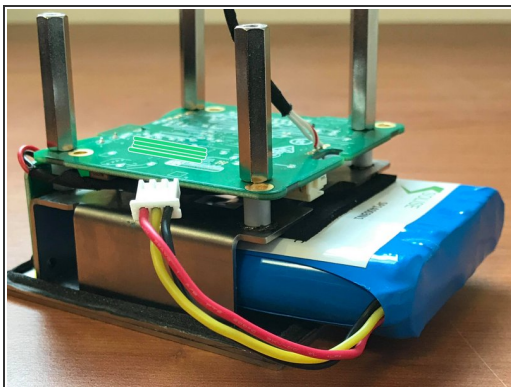
- Disconnect the battery connector from the board
- Be careful to pull gently using a small screwdriver to pry up the clip, then apply gentle pressure

Step 6 — Removing the battery



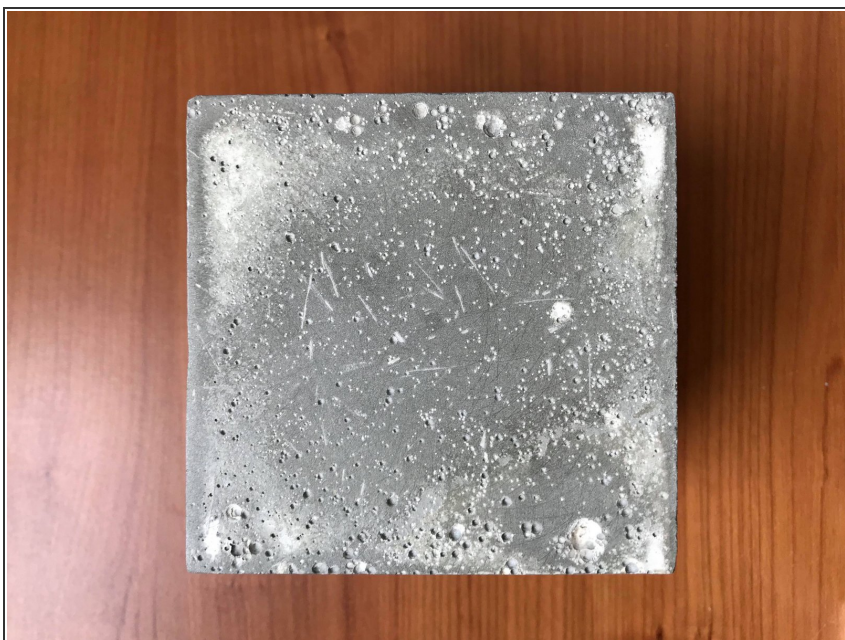
- Push the battery from the rear towards the opening where the wires are
- The battery is out and now it can be changed

Step 7 — Connecting the new battery



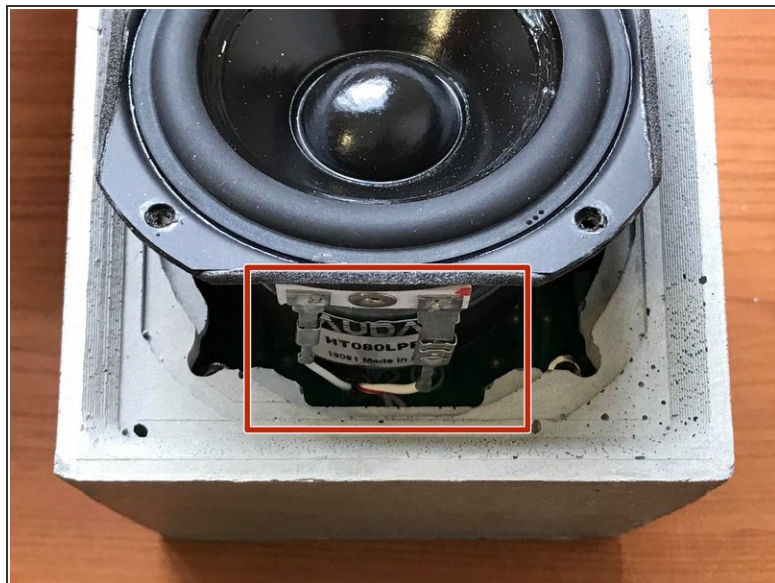
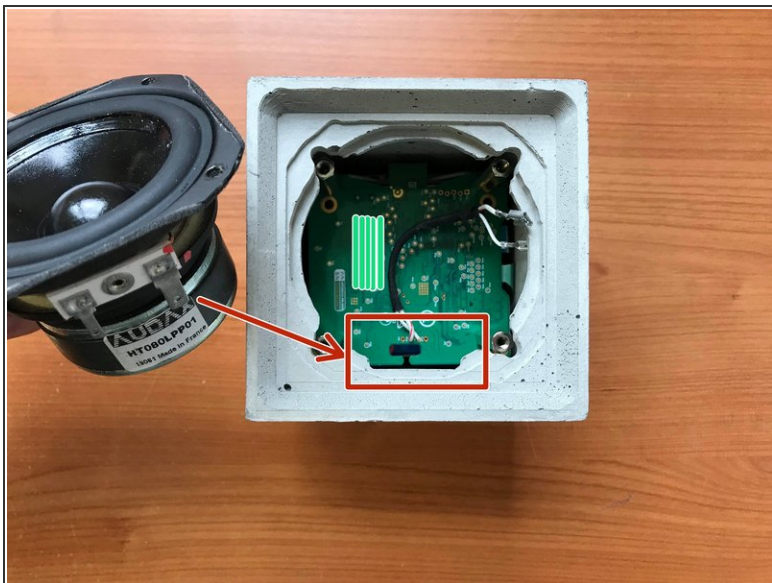
- Pass the connector through the space that is indicated for it

Step 8 — Reinstalling the board



- The texture of this surface is different from the other three faces. Orient yourself to how it fits correctly.

Step 9 — Reinstalling the speaker



- First connect the positive and negative wires, then slide the speaker in the enclosure in the right orientation

Step 10 — Finished



- Finally replace the speaker grill: your Pave Parisien is ready to use!