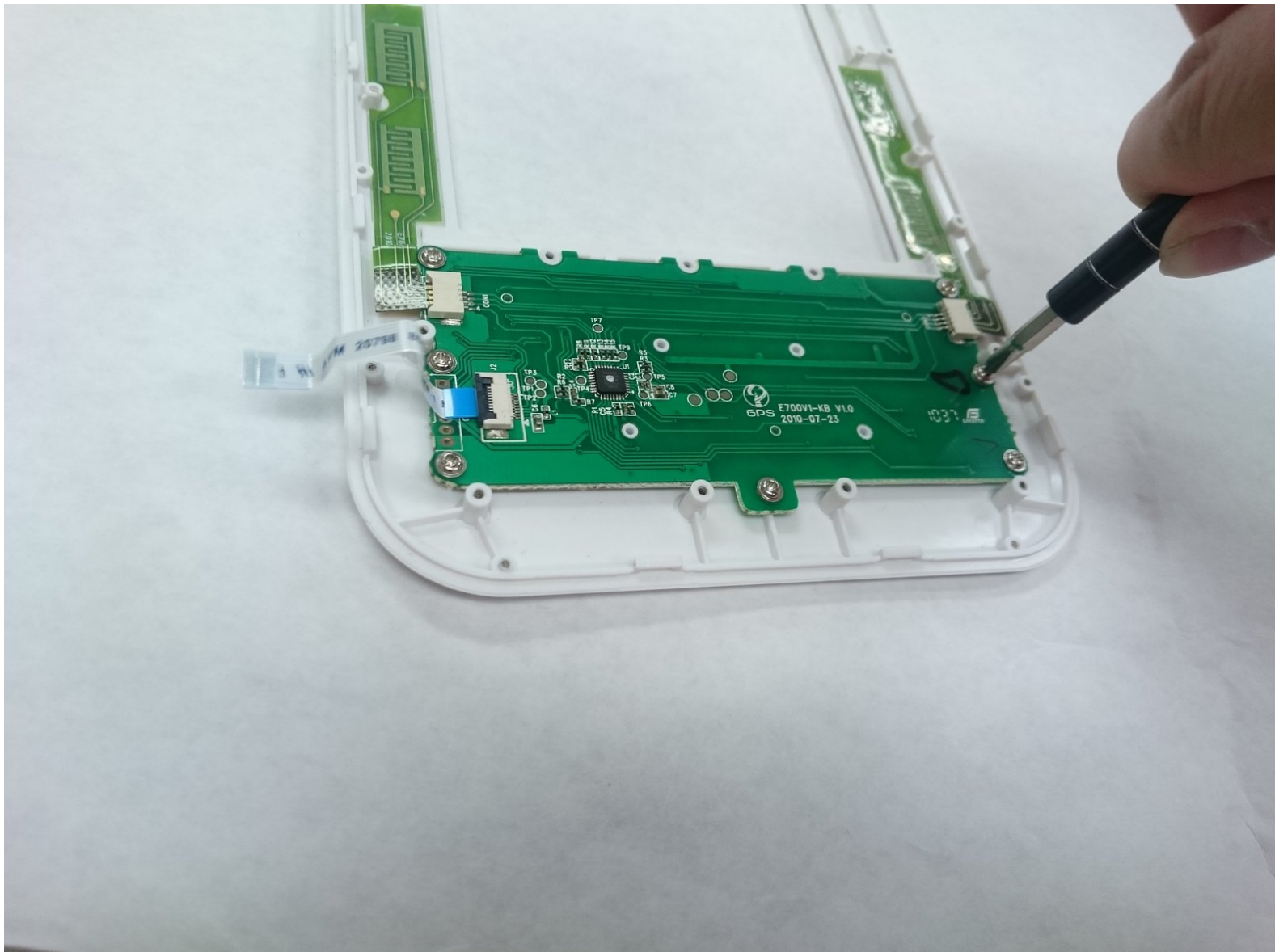




# The Sharper Image Literati Tablet Keyboard Replacement

This is a Keyboard Replacement guide for the Sharper Image Literati.

Written By: Spencer Dodder



## INTRODUCTION

The Sharper Image Literati Tablet's Keyboard may need to be replaced due to wear on the keys within a few years of purchase. The Keyboard replacement for The Sharper Image Tablet can be done in approximately half an hour to forty five minutes with moderate difficulty level in nineteen steps. Keyboard replacement for The Sharper Image Literati Tablet can help your device look new once more.



### TOOLS:

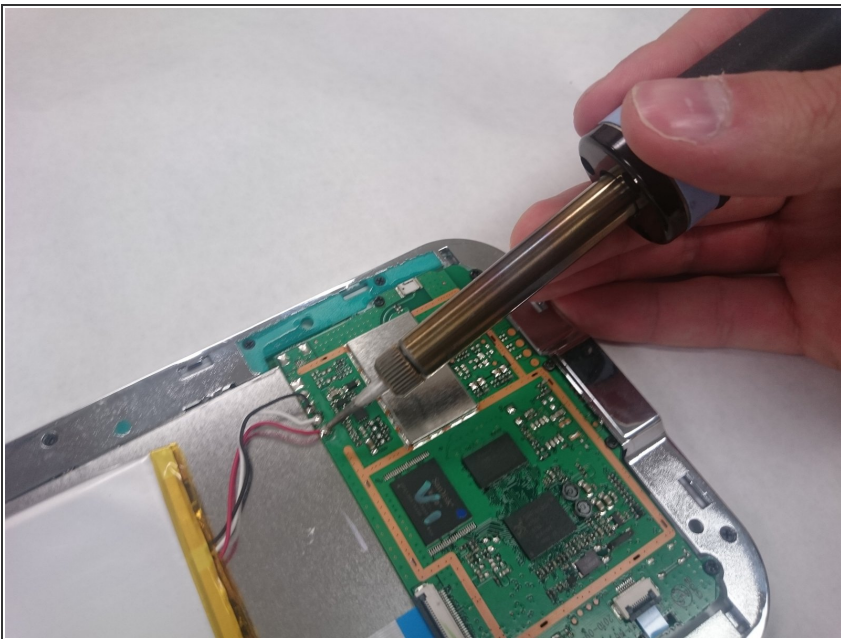
- [Plastic Cards](#) (1)
  - [Spudger](#) (1)
  - [Soldering Iron](#) (1)
  - [Hair Dryer](#) (1)
  - [Tweezers](#) (1)
  - [Phillips #00 Screwdriver](#) (1)
  - [Phillips #0 Screwdriver](#) (1)
-

## Step 1 — Battery



- Wedge plastic spudger tool between the back panel and the body of device.
- Pry apart the back panel and the device.

## Step 2



- [Desolder](#) the battery wires from the circuit board.

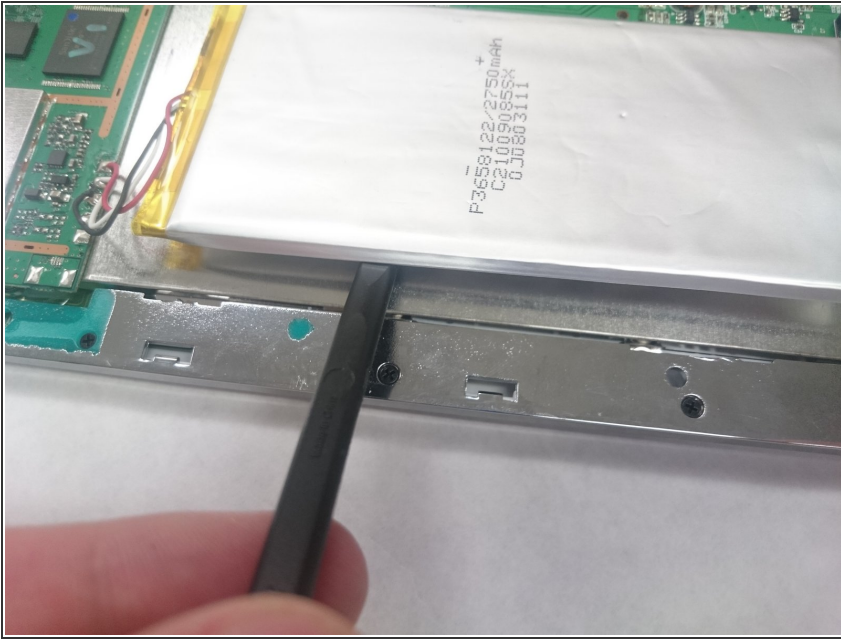
## Step 3




- Warm the battery with a hair dryer.
- ⚠ Be careful not to over-heat the battery, this could cause the battery to ignite.



## Step 4



- Gently wedge a spudger or thin plastic card between the battery and the body of device. Work the spudger or card along the length of the battery to free it from the adhesive.

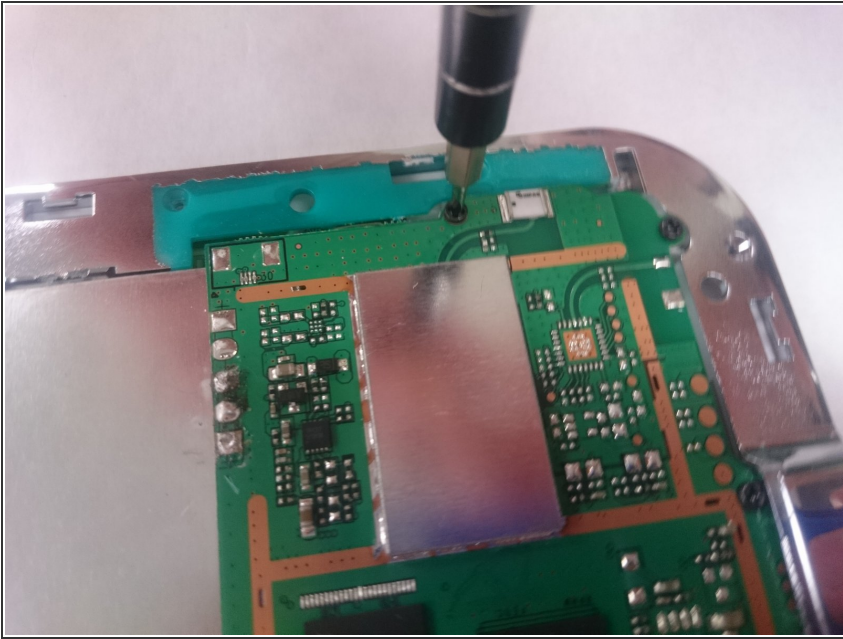
 Do not bend or puncture the battery. Work slowly and carefully.

## Step 5 — SD Port



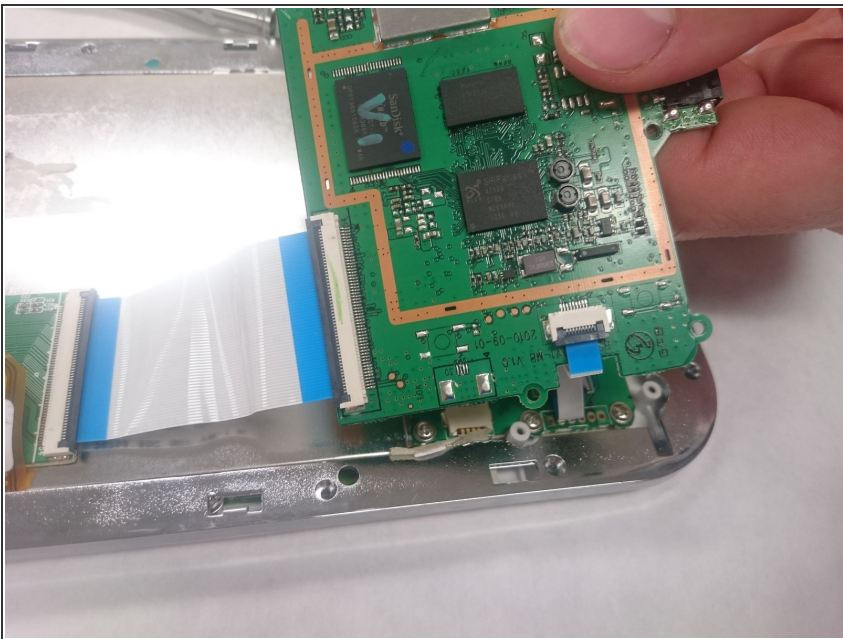
- Use a Phillips #00 screwdriver to remove the fifteen 4mm screws from the silver peripheral edging.

## Step 6



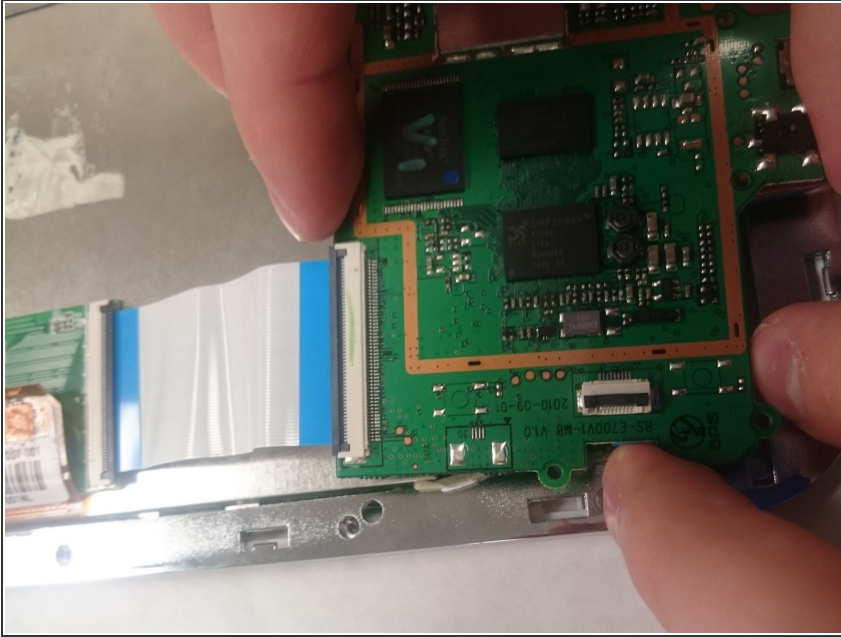
- Use a Phillips #00 screwdriver to remove three 4 mm screws from the circuit board containing the headphone jack and power jack.

## Step 7



- Remove the circuit board.

## Step 8



- Unclip ZIF clip from the chip and unplug ribbon cable.

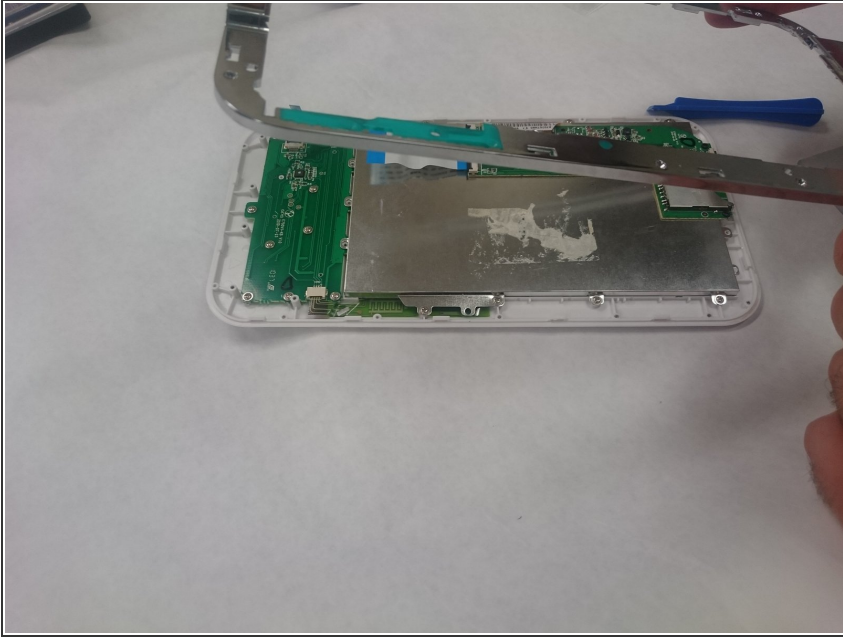
## Step 9



- Detach the peripheral edge with plastic wedge.
- i** This may require a little hard pulling.



## Step 10



- Remove peripheral silver edge.

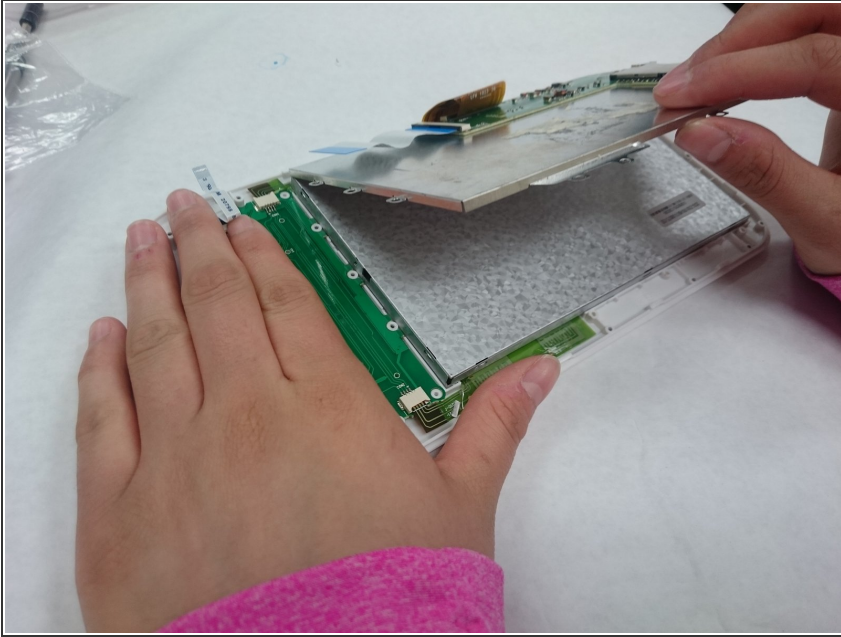
## Step 11



- Remove screws from the large metal shielding.

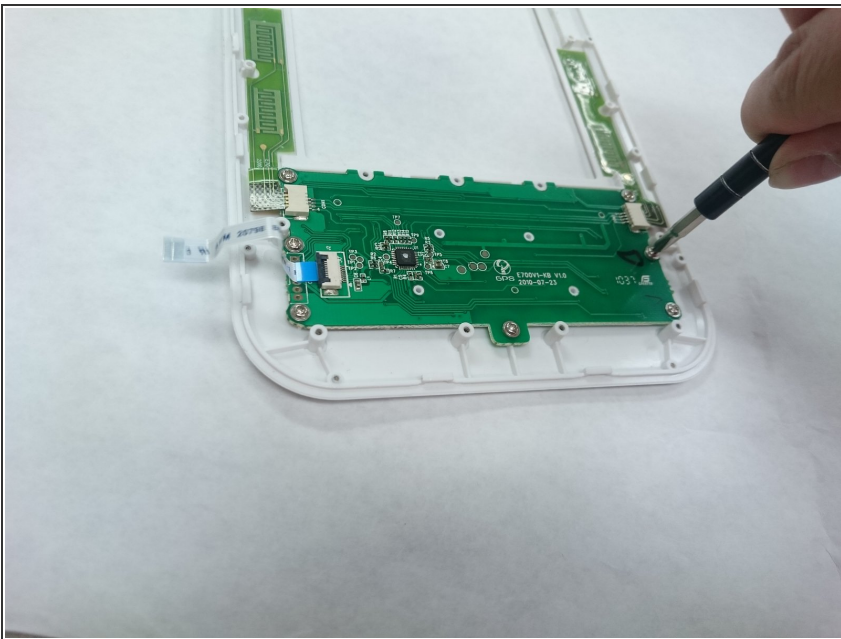


## Step 12



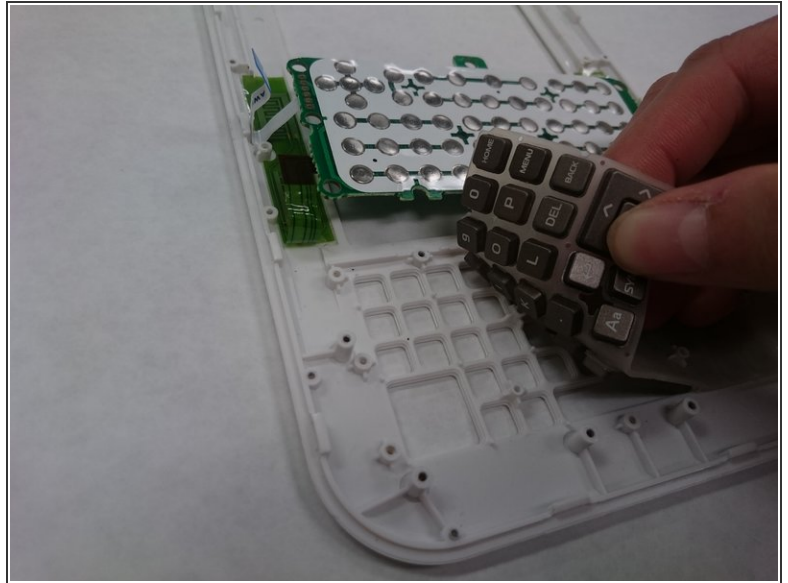
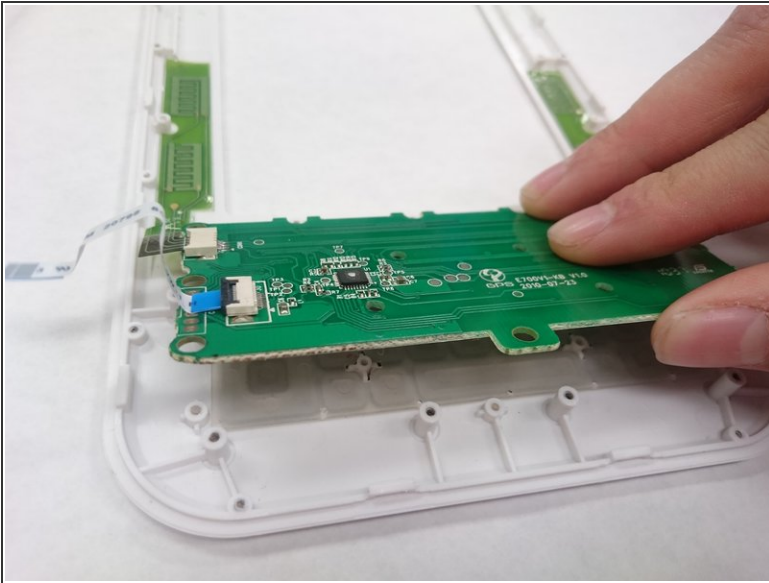
- Remove the silver backing plate and the adhered SD port chip.

## Step 13 — Keyboard



- Remove the 10 Phillips head 4.2 mm screws using PH#00 screwdriver from the key board chip.

## Step 14



- Peel back the sensor array and keypad.

To reassemble your device, follow these instructions in reverse order.