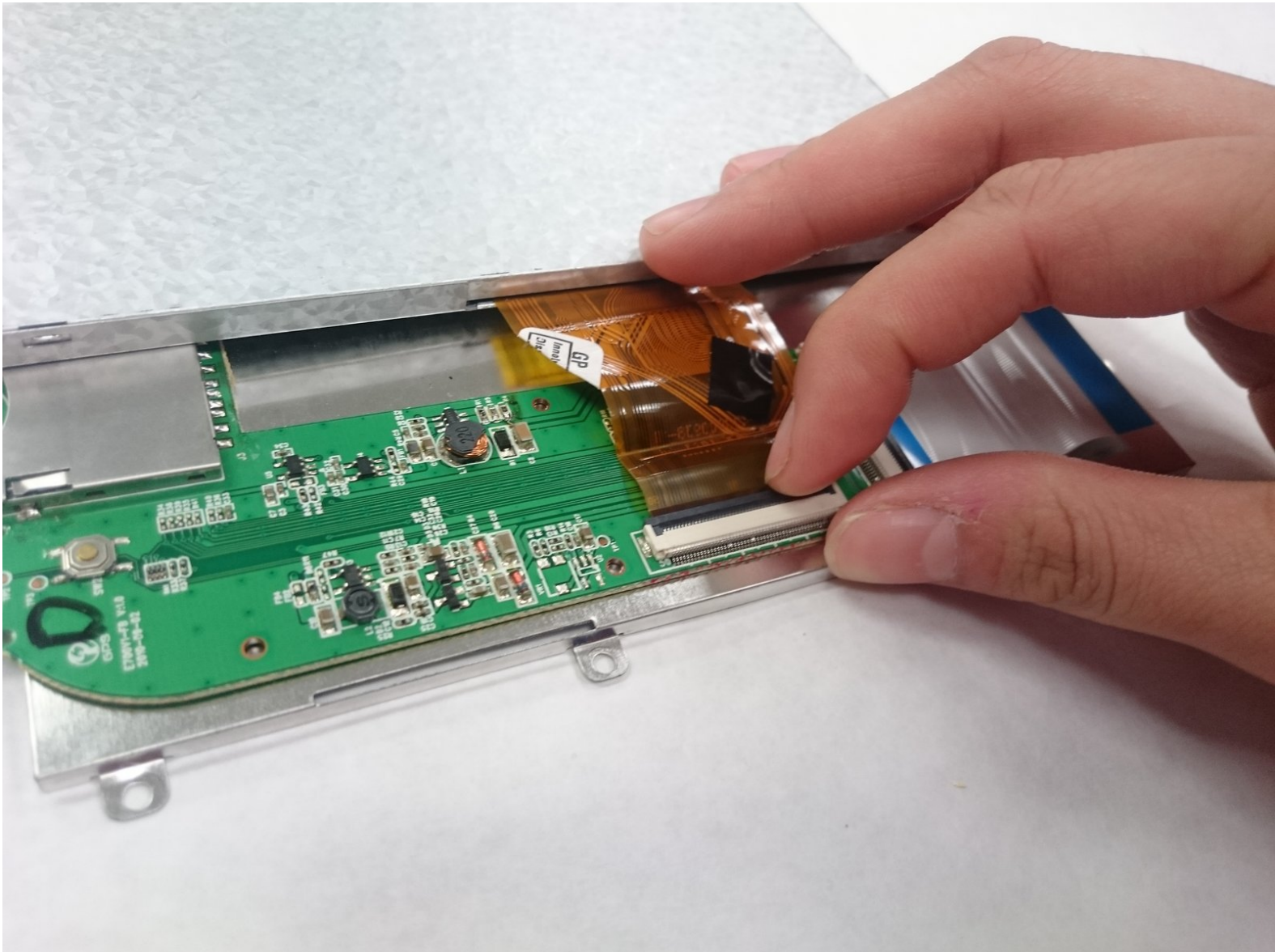




The Sharper Image Literati Tablet Screen Replacement

This guide describes the replacement of The Sharper Image Literati screen.

Written By: Spencer Dodder



INTRODUCTION

The Sharper Image Literati Tablet may need a screen replacement years or months after purchase, according to reviews online. The screen replacement for The Sharper Image Tablet can be done in approximately 30 minutes to a hour with difficult level in seventeen steps. Screen replacement for The Sharper Image Literati



TOOLS:

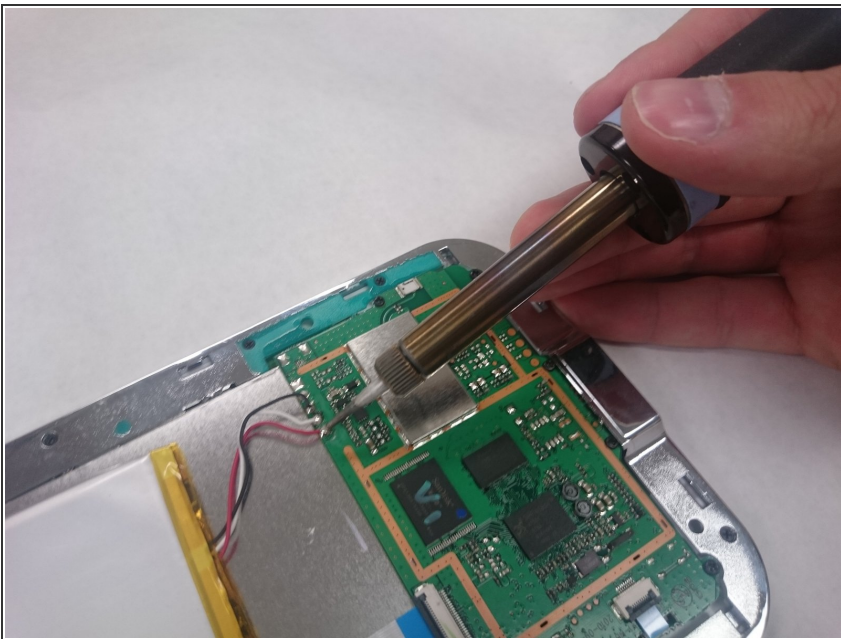
- [Spudger](#) (1)
 - [Soldering Iron](#) (1)
 - [Hair Dryer](#) (1)
 - [Tweezers](#) (1)
 - [Phillips #0 Screwdriver](#) (1)
 - [2.0 mm Flathead Screwdriver](#) (1)
 - [Phillips #00 Screwdriver](#) (1)
-

Step 1 — Battery



- Wedge plastic spudger tool between the back panel and the body of device.
- Pry apart the back panel and the device.

Step 2



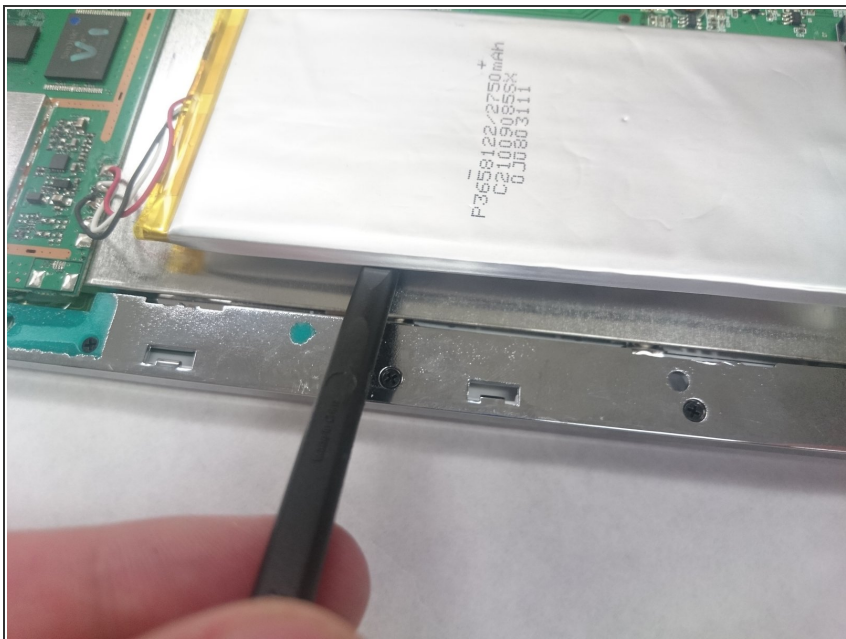
- [Desolder](#) the battery wires from the circuit board.

Step 3




- Warm the battery with a hair dryer.
- ⚠ Be careful not to over-heat the battery, this could cause the battery to ignite.

Step 4



- Gently wedge a spudger or thin plastic card between the battery and the body of device. Work the spudger or card along the length of the battery to free it from the adhesive.

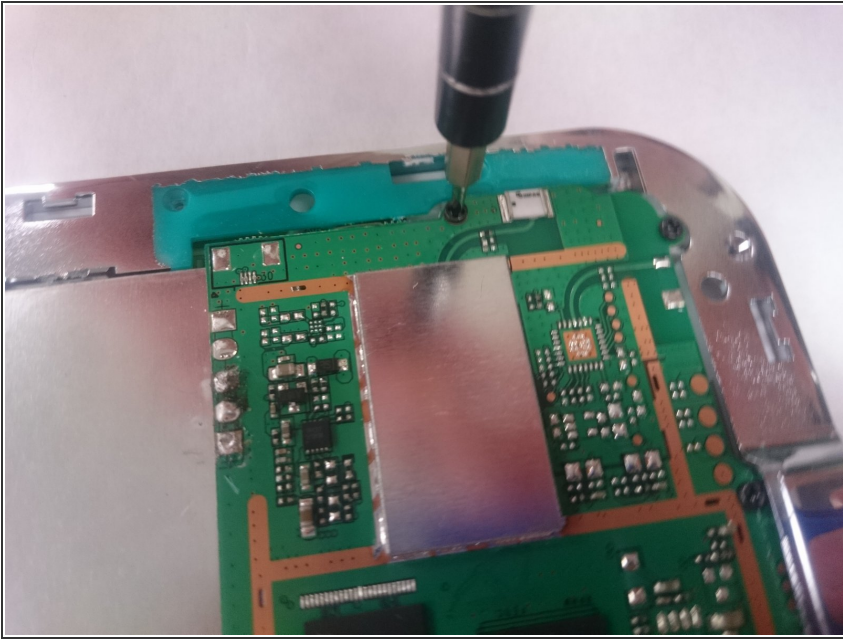
 Do not bend or puncture the battery. Work slowly and carefully.

Step 5 — SD Port



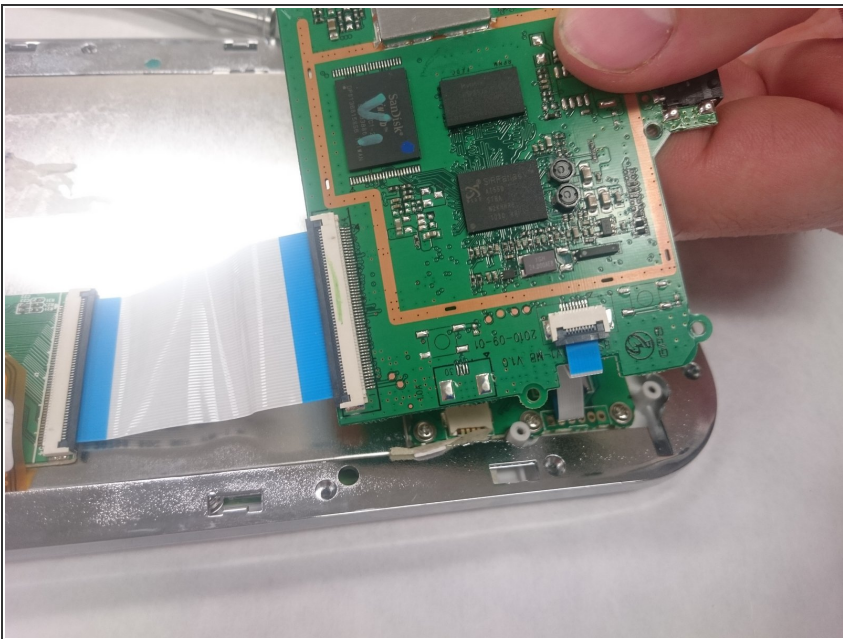
- Use a Phillips #00 screwdriver to remove the fifteen 4mm screws from the silver peripheral edging.

Step 6



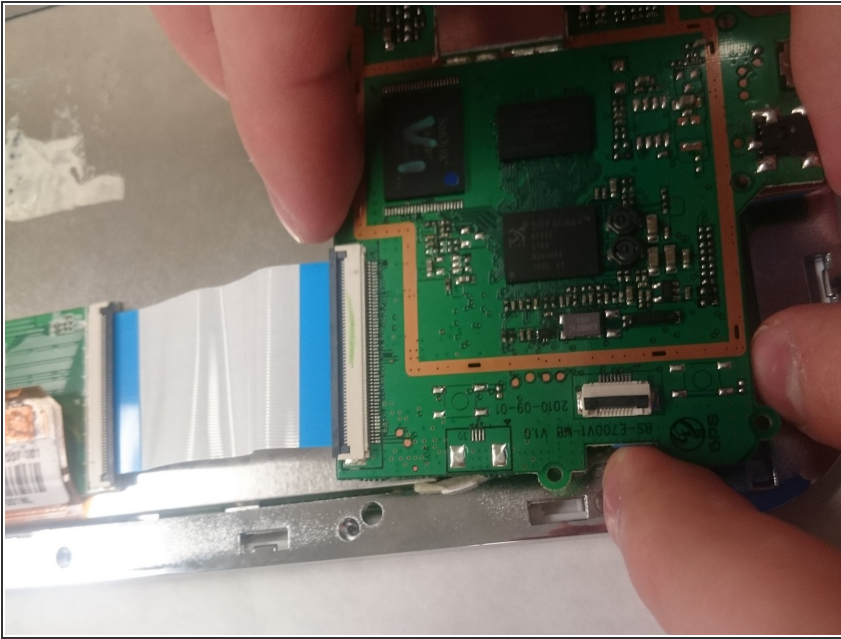
- Use a Phillips #00 screwdriver to remove three 4 mm screws from the circuit board containing the headphone jack and power jack.

Step 7



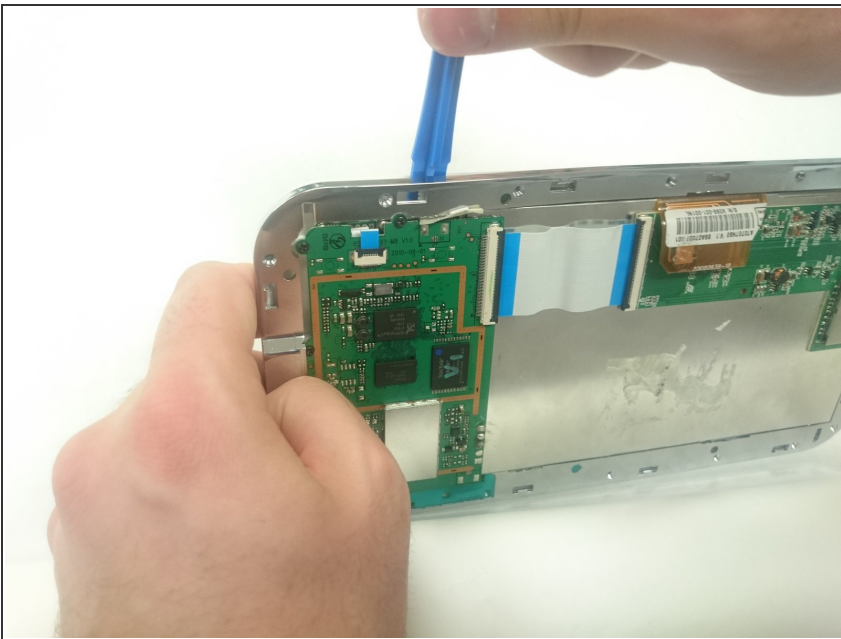
- Remove the circuit board.

Step 8



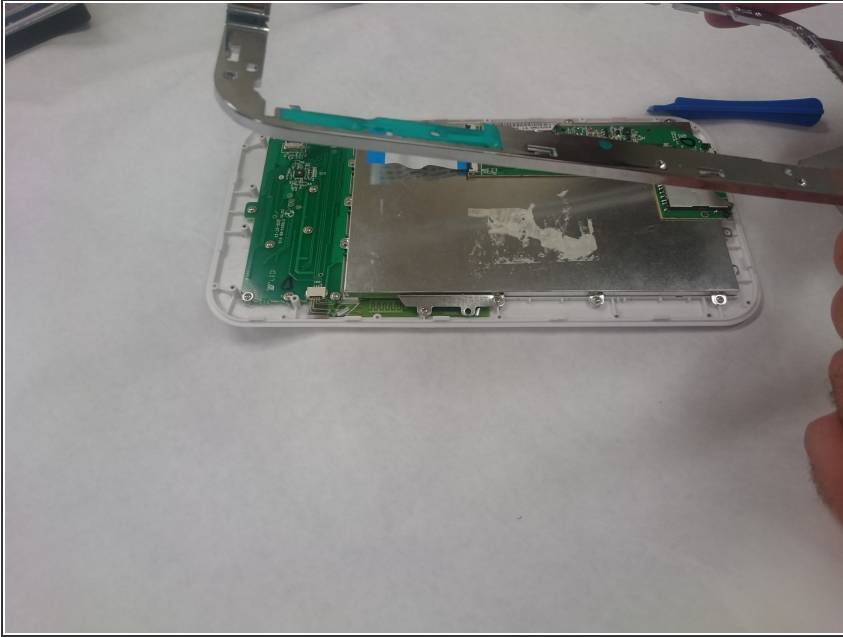
- Unclip ZIF clip from the chip and unplug ribbon cable.

Step 9



- Detach the peripheral edge with plastic wedge.
- ⓘ This may require a little hard pulling.

Step 10



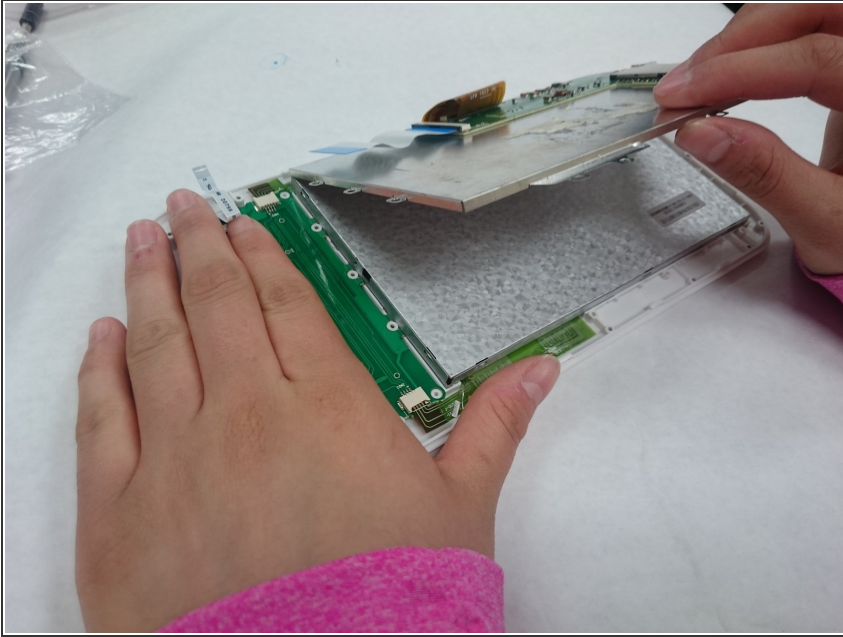
- Remove peripheral silver edge.

Step 11



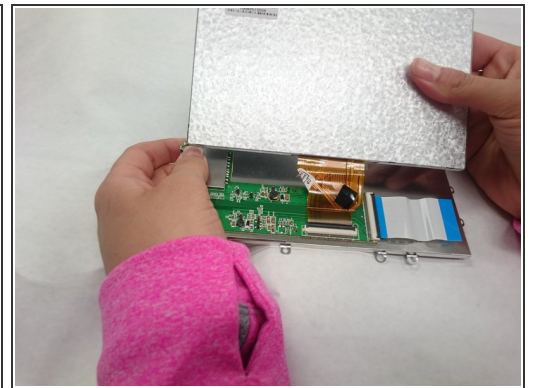
- Remove screws from the large metal shielding.

Step 12



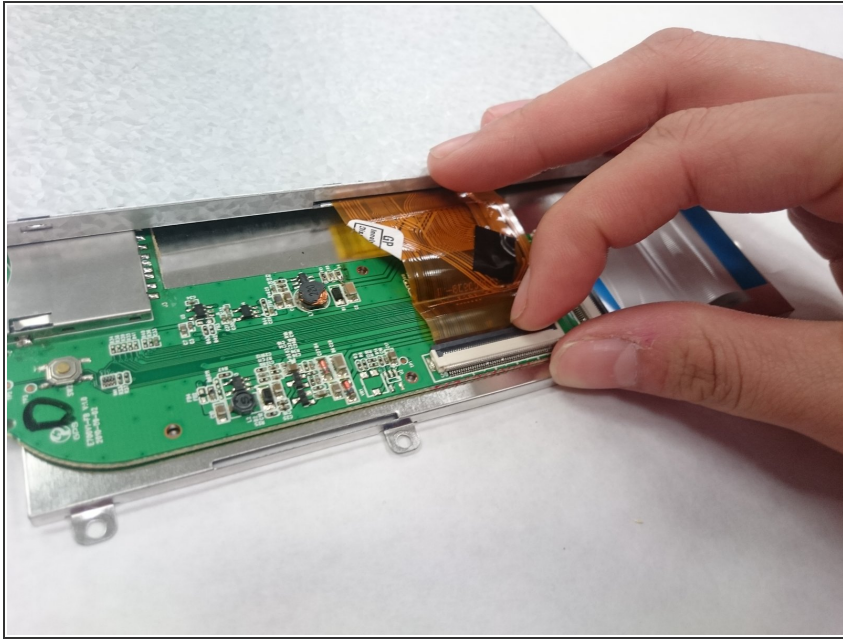
- Remove the silver backing plate and the adhered SD port chip.

Step 13 — Screen



- Unravel the screen from the silver backing.

Step 14



- Unclip JIF clip and remove ribbon cable.

To reassemble your device, follow these instructions in reverse order.