



Thrustmaster T Flight Hotas 4 Throttle Rudder Replacement

This guide will show you how to replace the rudder found on the throttle allowing for easier steering.

Written By: Julissa Orozco



INTRODUCTION

The throttle on the controller aids in acceleration. This guide will show you how to replace the rudder found on the throttle allowing for easier steering.



TOOLS:

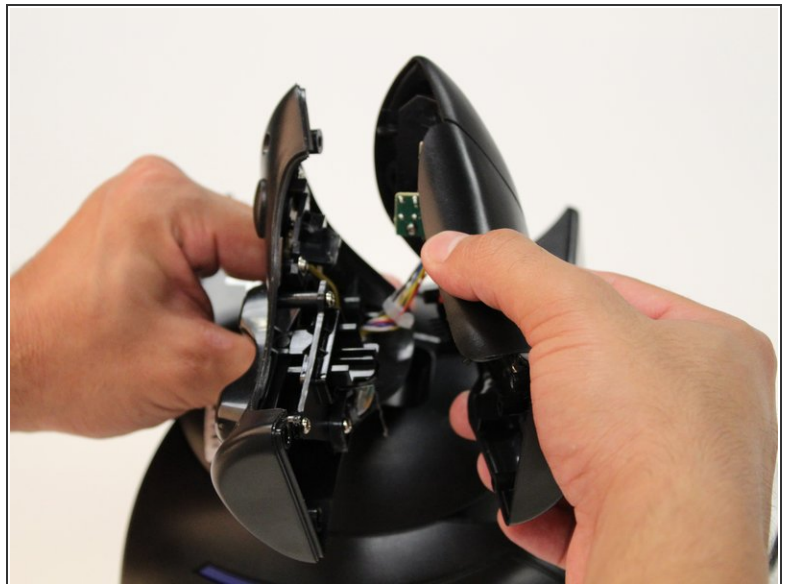
- **JIS #1** (1)
-

Step 1 — J1 Screws on Throttle



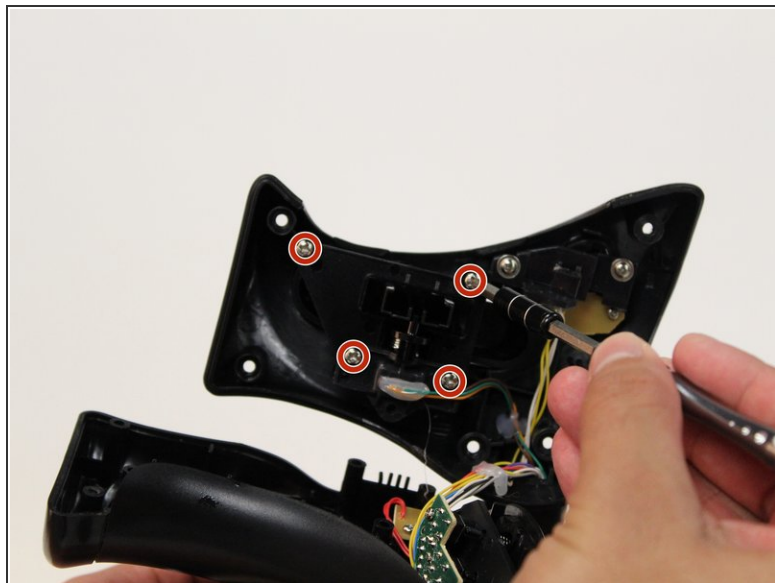
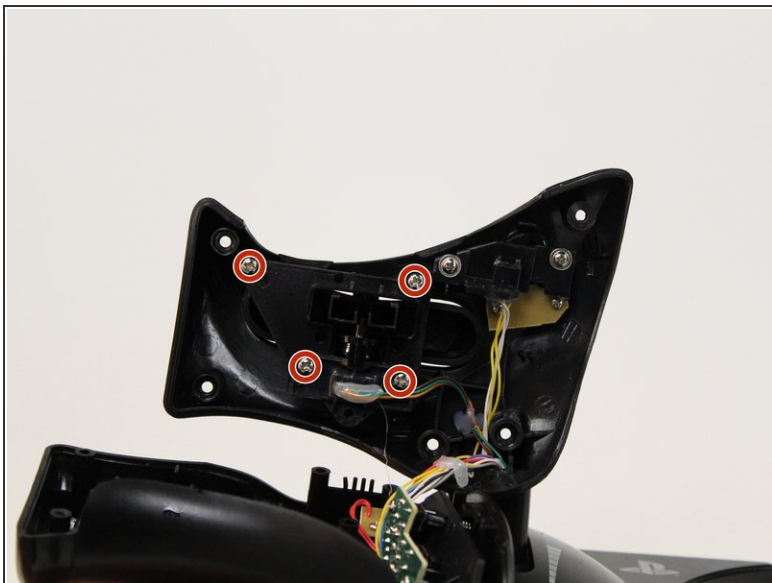
- ⓘ Be sure to disconnect the controller from the power source before disassembling.
- Remove the five 15 mm J1 JIS head screws from the front of the throttle.

Step 2 — Throttle Panel



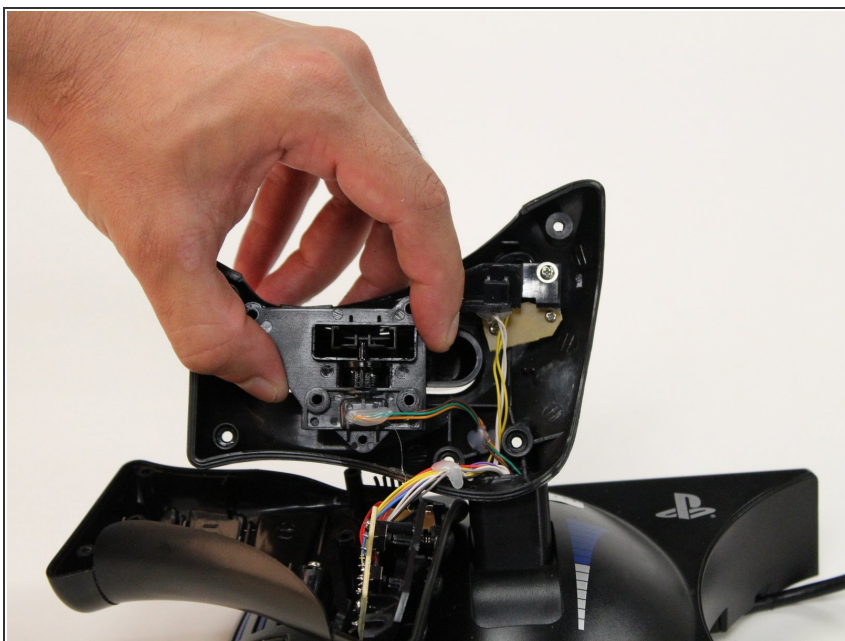
- ⓘ Be sure to disconnect the controller from the power source before disassembling.
- Using your hands, pull away the panel from the throttle.

Step 3 — Throttle Rudder



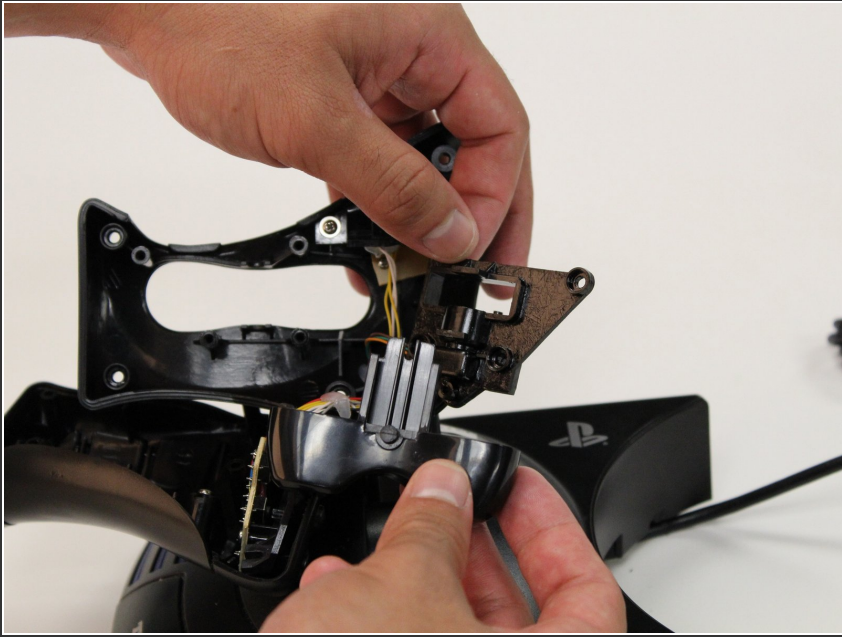
- Remove the four 13 mm J1 JIS head screws from the rudder assembly holder.

Step 4



- Gently remove the panel that is covering the rudder.

Step 5



- Proceed to remove the rudder from the throttle.

To reassemble your device, follow these instructions in reverse order.