



Thrustmaster Ferrari 458 Spider Racing Wheel Gas/Break Pedal Replacement

Use this guide to replace the gas or break pedal on your Thrustmaster 458 Racing Wheel.

Written By: Mario Nunez



INTRODUCTION

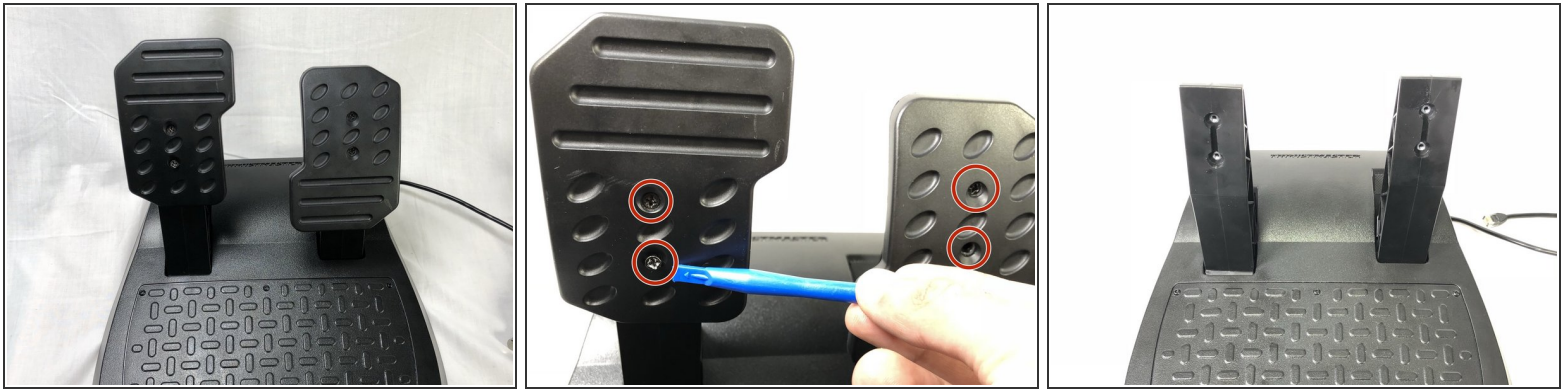
Use this guide to replace broken gas or break pedal.



TOOLS:

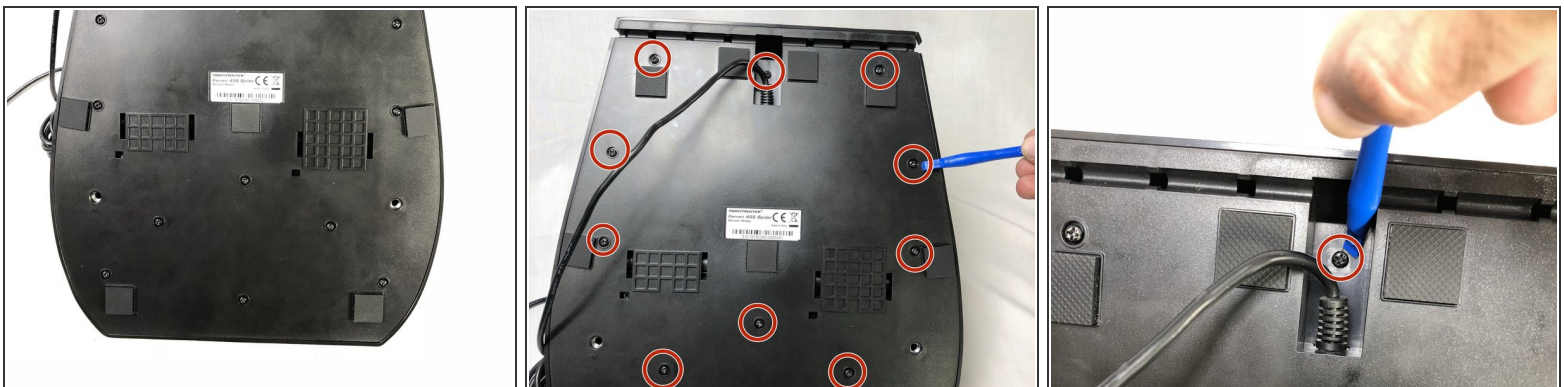
- [Phillips #2 Screwdriver](#) (1)
 - [iFixit Opening Tools](#) (1)
-

Step 1 — Gas/Break Pedal



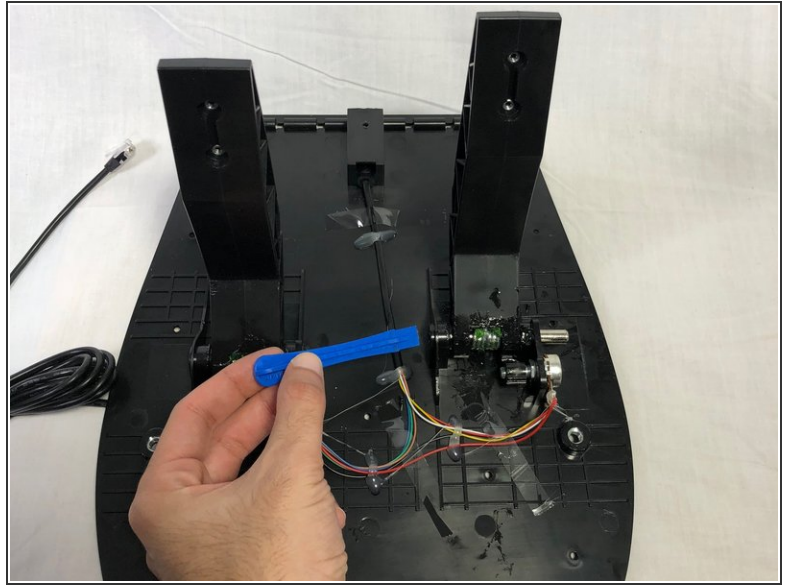
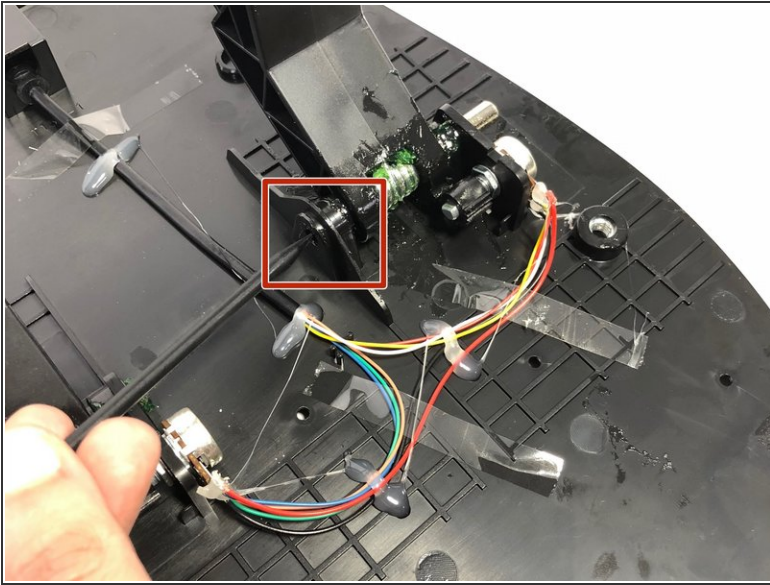
- Start by removing both pedals. Remove the two black 20mm screws on each pedal using a PH2 Phillips head screw driver.
- ⓘ In the picture you see a plastic opening tool instead of screw driver because we did not have our screw driver when we were taking the picture.

Step 2



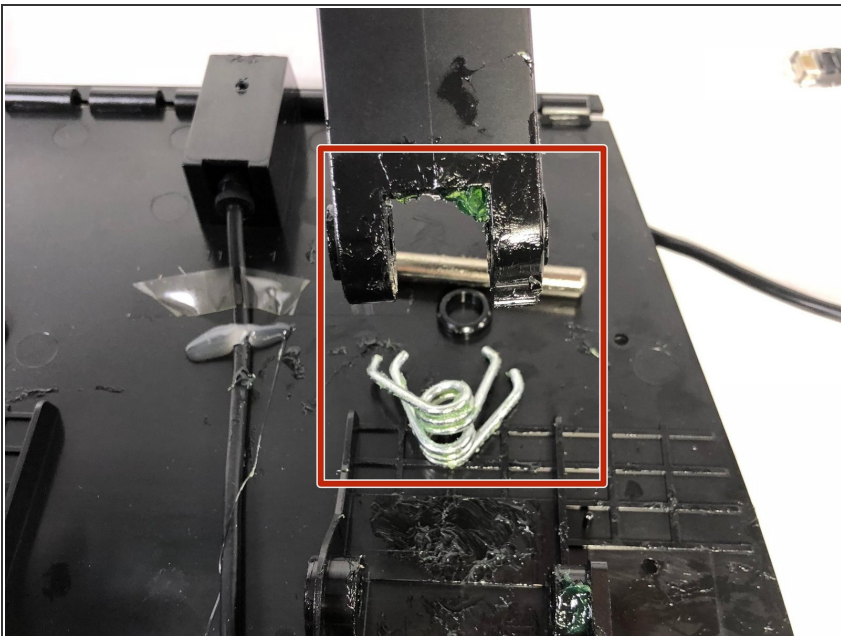
- Remove the 10mm long black screws on the back of the base using a PH2 Phillips head screw driver. There are 13 screws total.
- Gently lift cover out to access inside.
- ⓘ There is a screw behind the cable.
- ⓘ In the picture you see a plastic opening tool instead of screw driver because we did not have our screw driver when we were taking the picture.

Step 3



- Push the pin that holds the pedal out from middle outward.
- ⓘ There are two springs that hold the pedal upward. Make sure the pin goes through the springs and the pedal when installing new pedal.

Step 4



- Install the new pedal with springs and pin and make sure that the pin holds them together.
- Add a little grease on pin when installing the new pedal.
- Repeat steps in reverse to reassemble device.



Wash your hands after you finish dealing with grease. it is a dangerous material will cause

problems if it gets in your eyes or
get swallowed.

To reassemble your device, follow these instructions in reverse order.