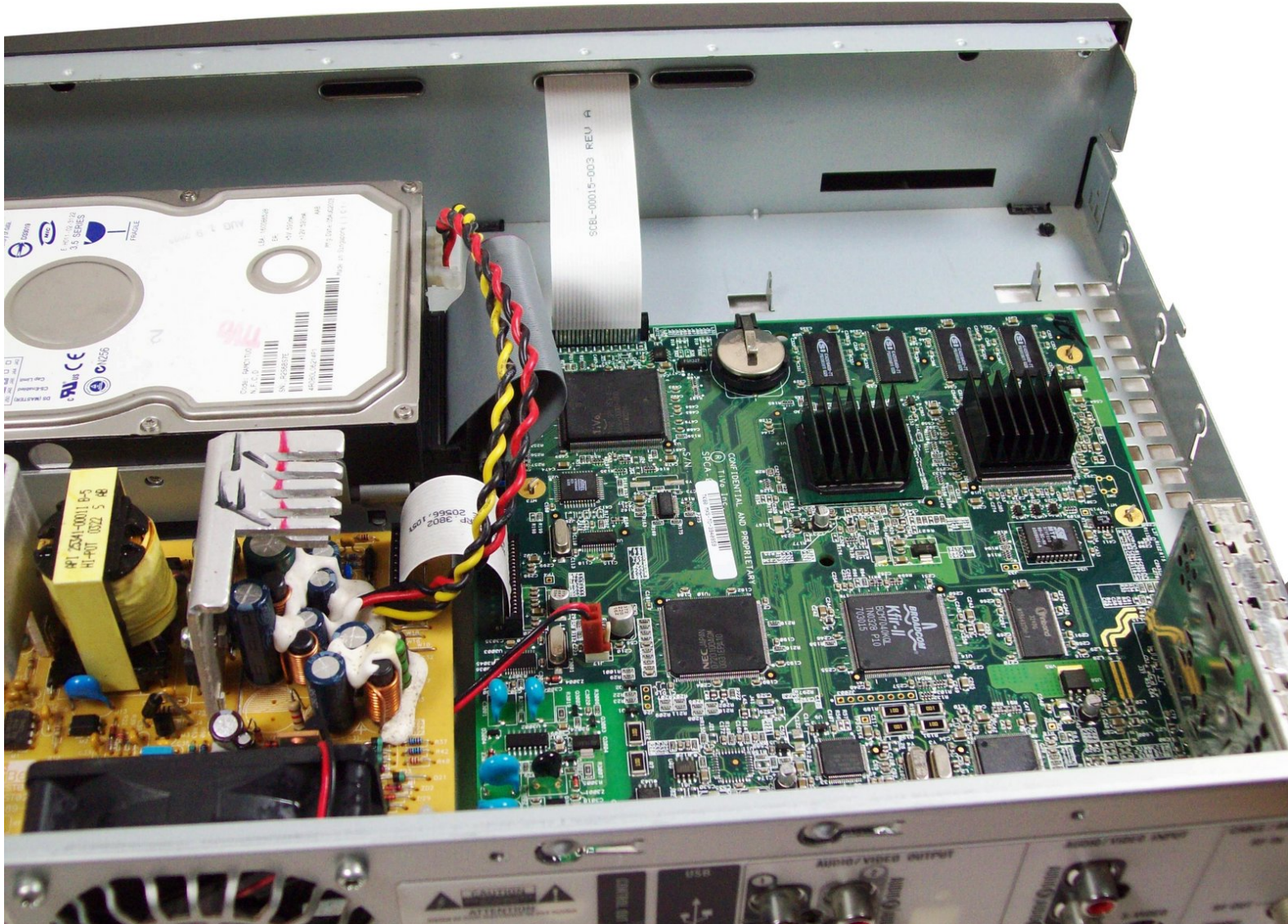




TiVo Series 2 TCD24008A Motherboard Replacement

This guide will teach you how to detach the motherboard from the device.

Written By: Cody Hunter



INTRODUCTION

The Motherboard contains all the 'brains' of the device. In case this component needs to be replaced, this guide will walk you through the installation of the motherboard.

TOOLS:

- [8" Needle Nose Plier](#) (1)
 - [T8 Torx Screwdriver](#) (1)
 - [T9 Torx Screwdriver](#) (1)
-

Step 1 — Cover



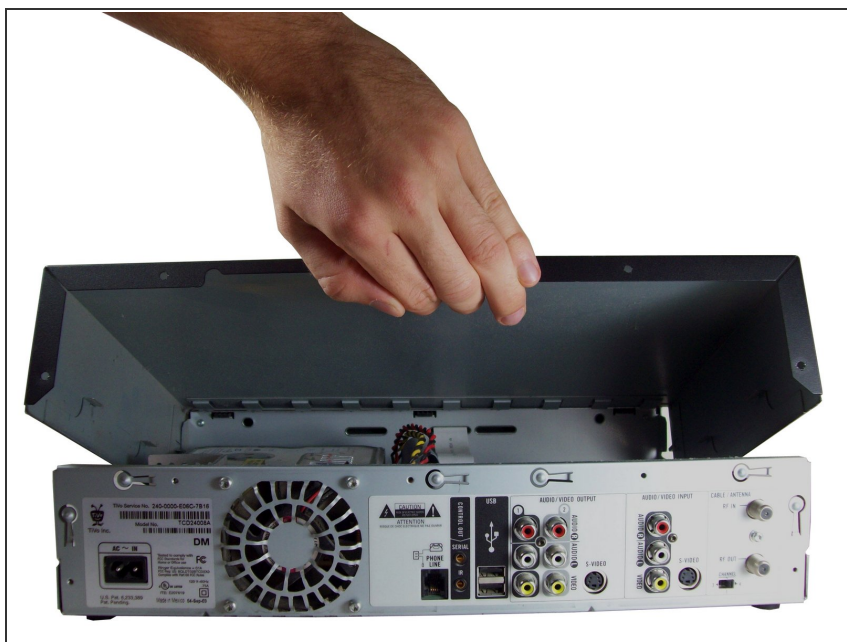
- Unscrew the five 0.31 inch T-9 screws on the back cover.

Step 2



- Slide the cover towards the back until it is no longer under the front cover.

Step 3



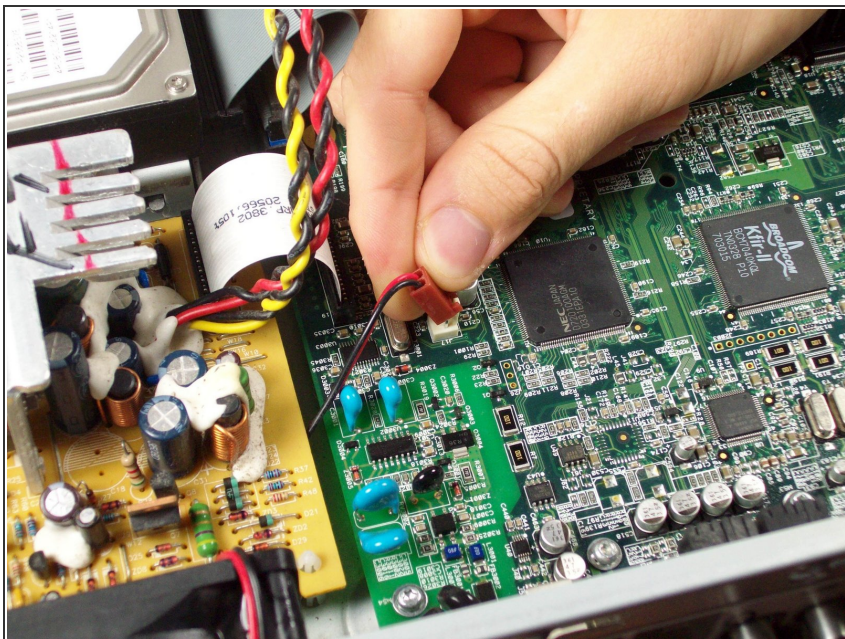
- Lift the cover up and off the device.

Step 4 — Motherboard



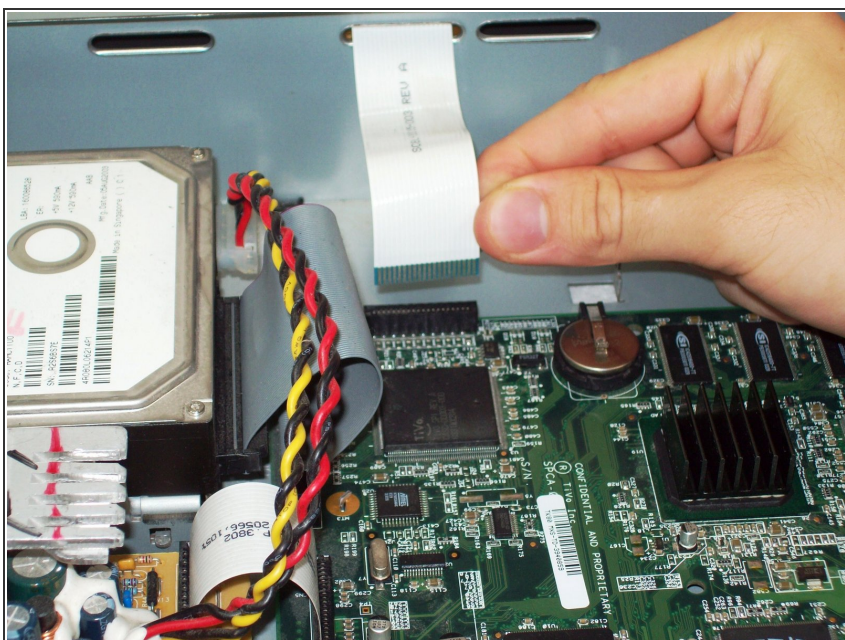
- Unscrew the 0.31 inch T-9 size screw on the back panel
- Unscrew the two 0.59 inch T-8 size screws on the back panel

Step 5



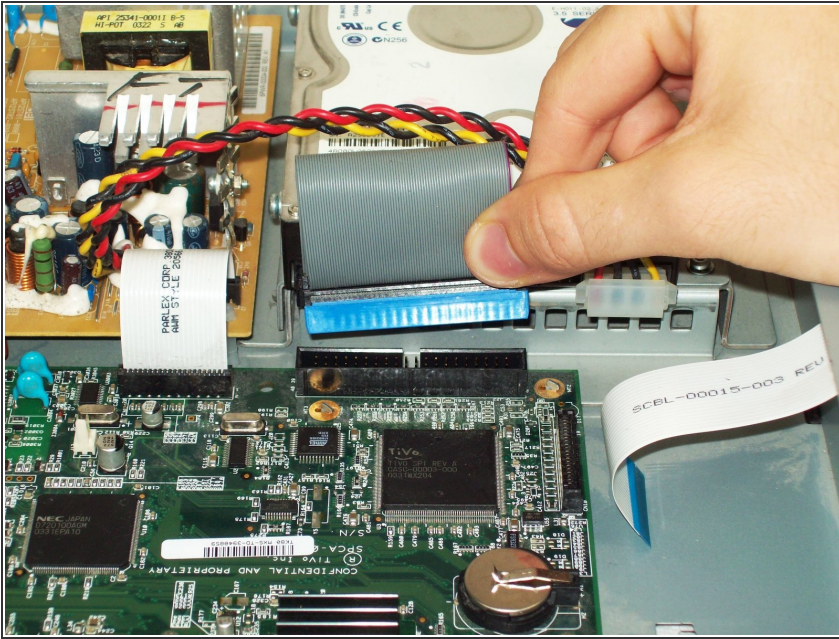
- Unplug the fan from the motherboard by gently pulling up on the red plug.

Step 6



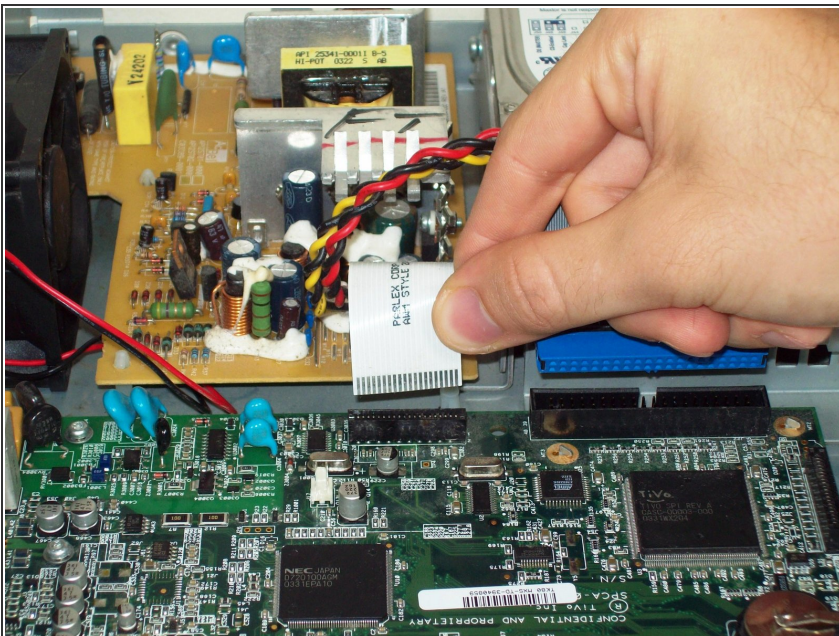
- Unplug the ribbon attaching the front panel sensor by pulling it upwards gently.

Step 7



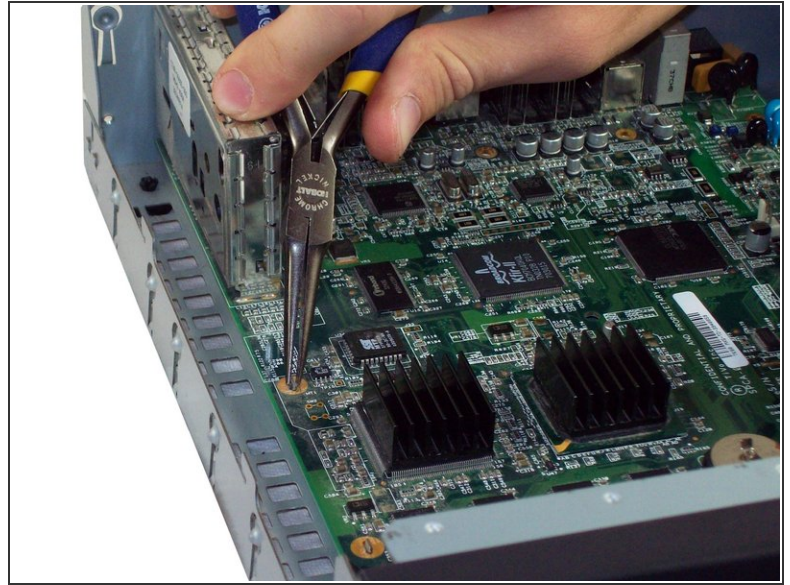
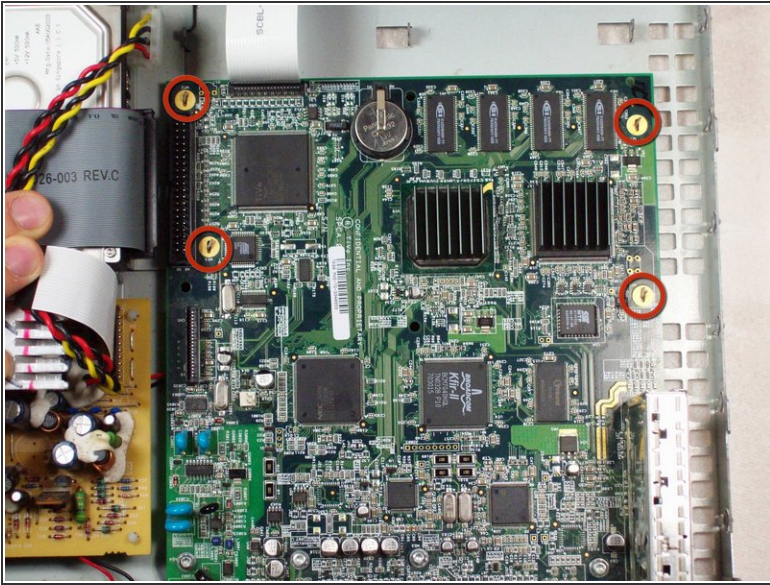
- Unplug the ribbon connecting the hard drive to the motherboard by pulling straight up on the ribbon. This may require some gentle wiggling.

Step 8



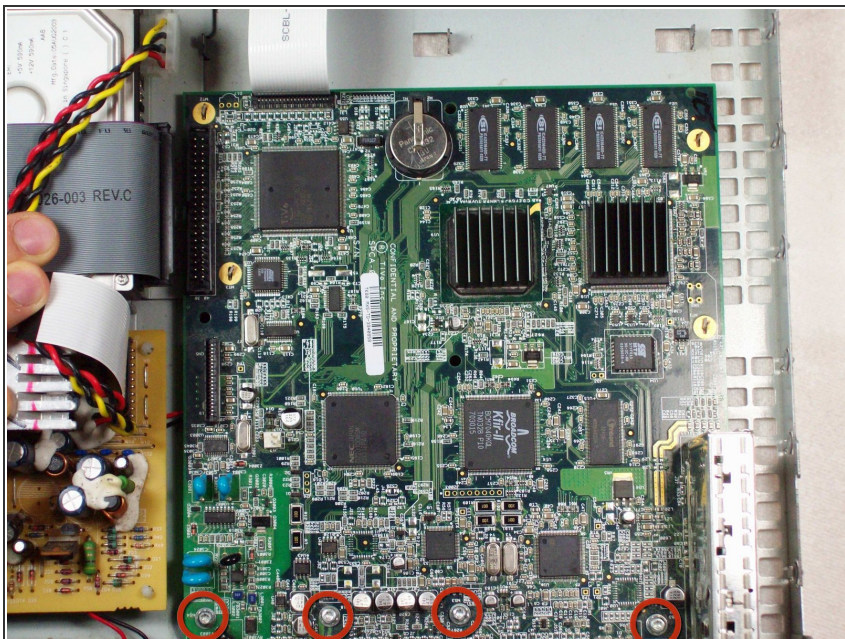
- Unplug the ribbon connecting the power supply to the motherboard by pulling upwards on this ribbon.

Step 9



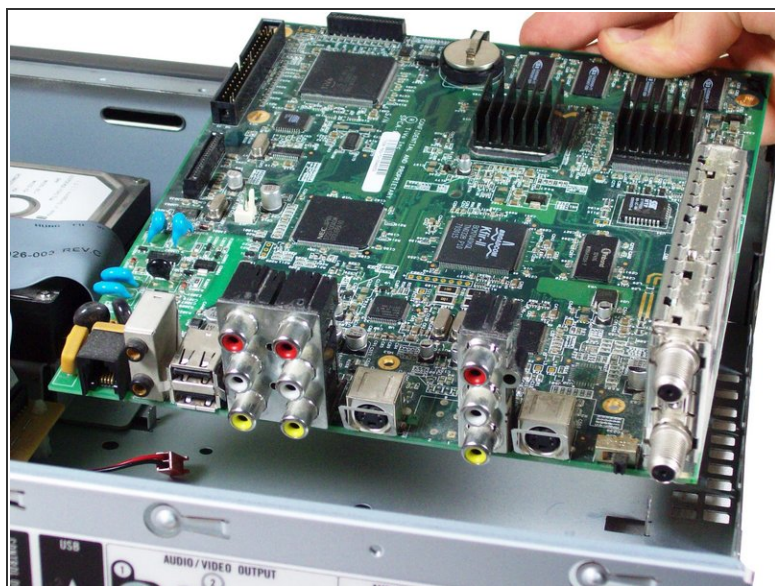
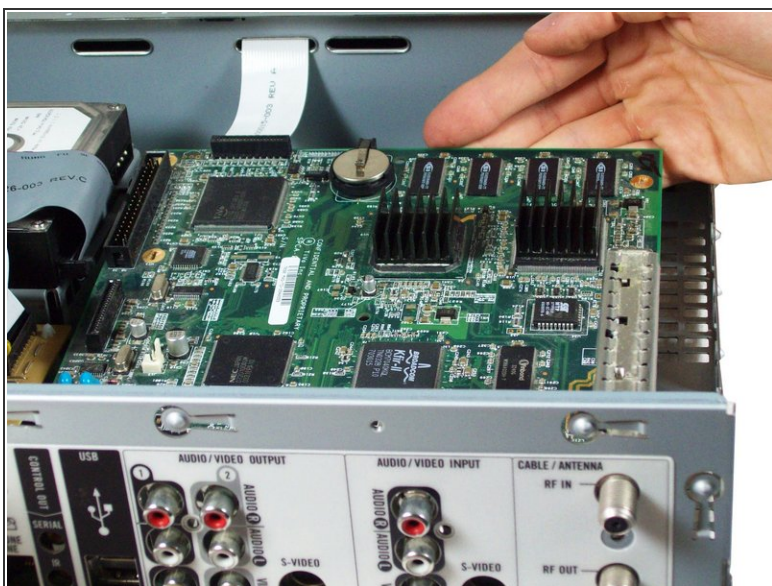
- Locate the four metal tabs on the motherboard.
 - Using Pliers, bend each of the tabs until they align straight with the holes underneath them.
- ⚠ Bend these just enough to slip them through the holes. Over-bending could snap these tabs. While this won't affect how the TiVo functions, they are there to secure the motherboard to prevent damage.

Step 10



- Locate and remove the four 0.31 inch T-9 size screws at the front of the motherboard.

Step 11



- Pull directly up on the motherboard so that it slips over the four golden metal tabs.
- Pull up and away from the back panel so all of the cable inputs slip through the casing.

To reassemble your device, follow these instructions in reverse order.