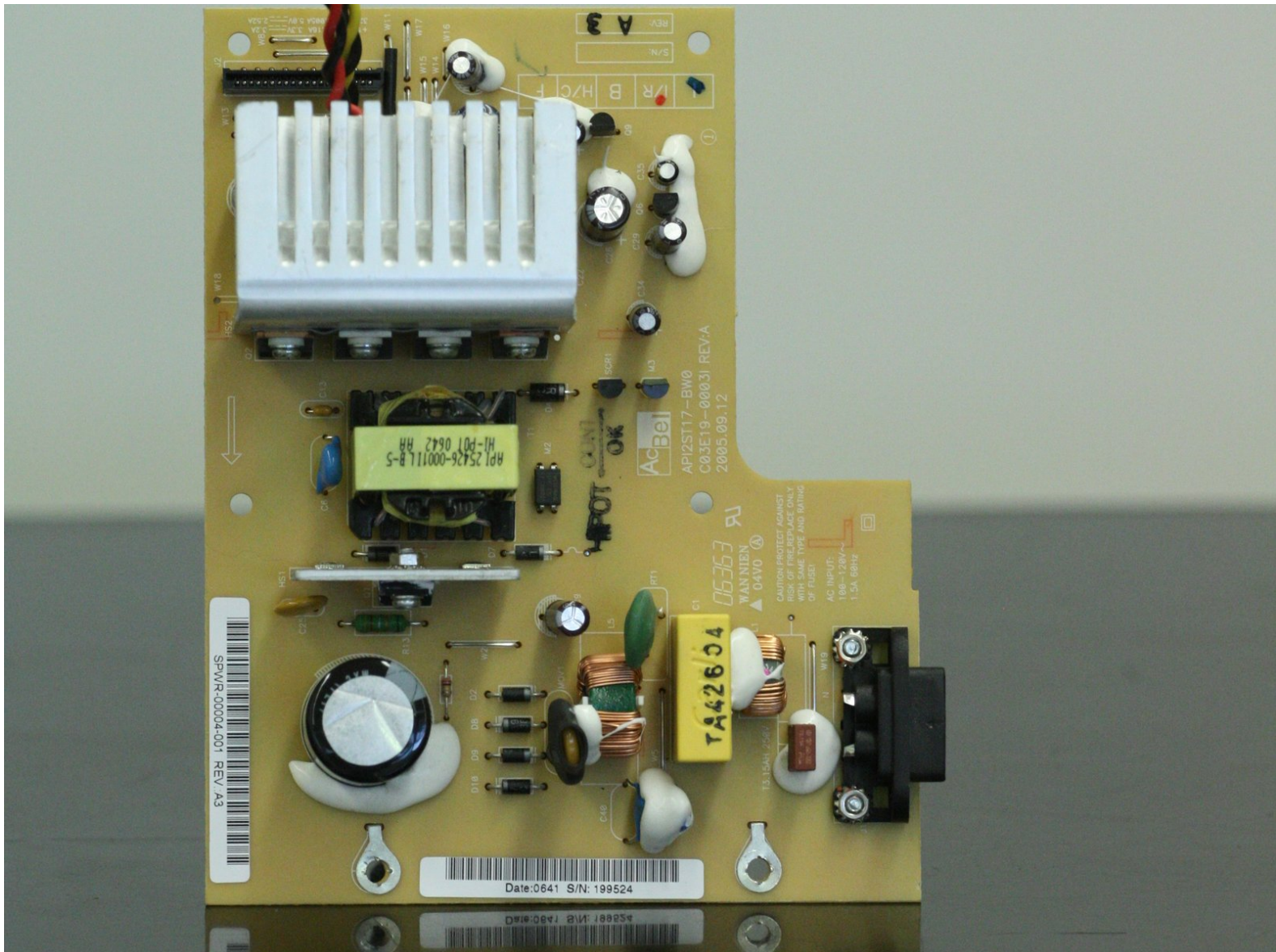




TiVo Series 2 TCD540080 Power Supply Replacement

Replace a broken TiVo power supply.

Written By: Svyatoslav Markeyev





TOOLS:

- [T10 Torx Screwdriver](#) (1)
-

Step 1 — Removal of TiVo Series 2 TCD540080 Case



- Power down the TiVo and detach the power cable from the rear of the unit.
- ⚠ Wait 5 minutes for the unit to fully discharge before proceeding to the next step.

Step 2



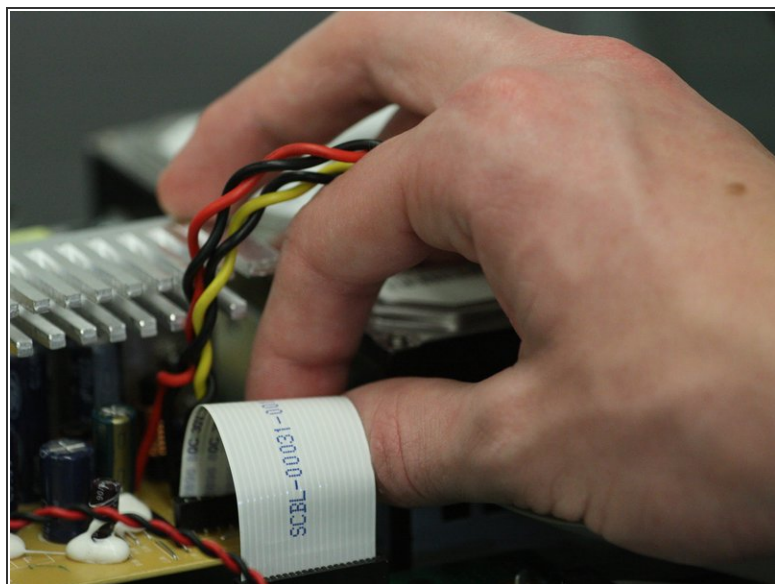
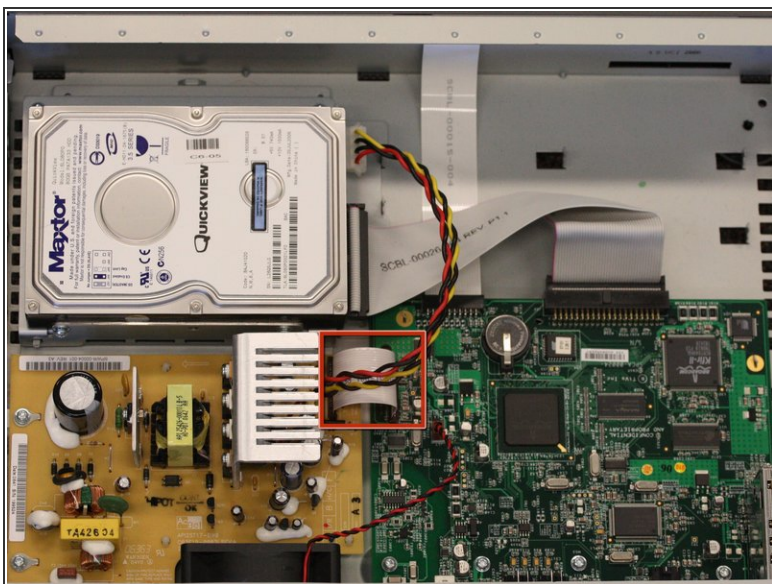
- Remove the five T10 screws from the rear of the case using the Torx screwdriver.

Step 3



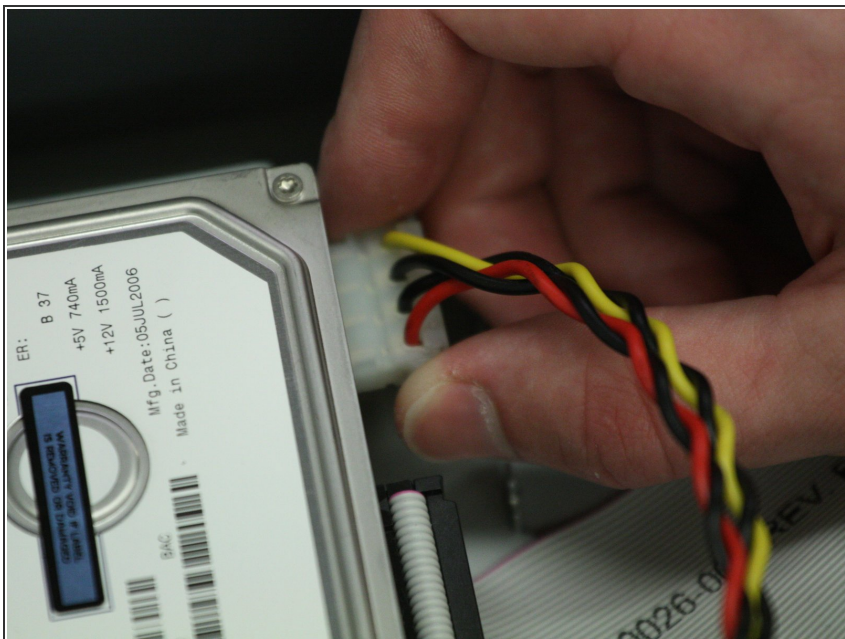
- Lift up and pull back the outer casing towards the rear of the unit.

Step 4 — Power Supply



- Carefully remove the ribbon cable from the power supply. Hold the ribbon on both sides and pull up.

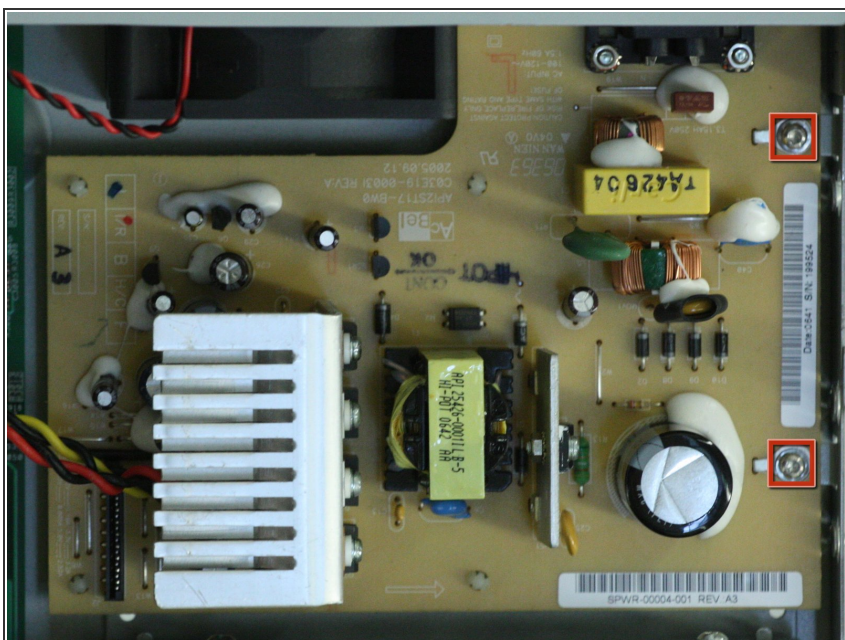
Step 5



- Disconnect the hard drive power cable. Firmly grip the white power connector and pull away from the hard drive.

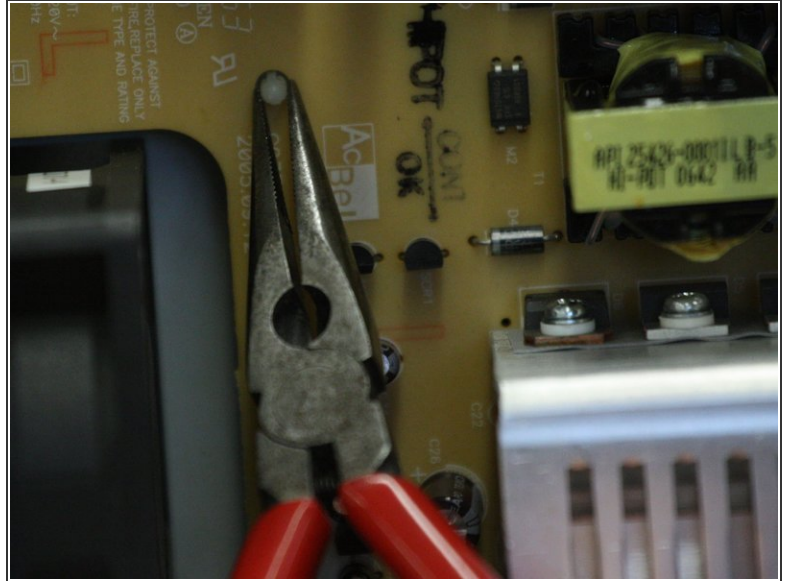
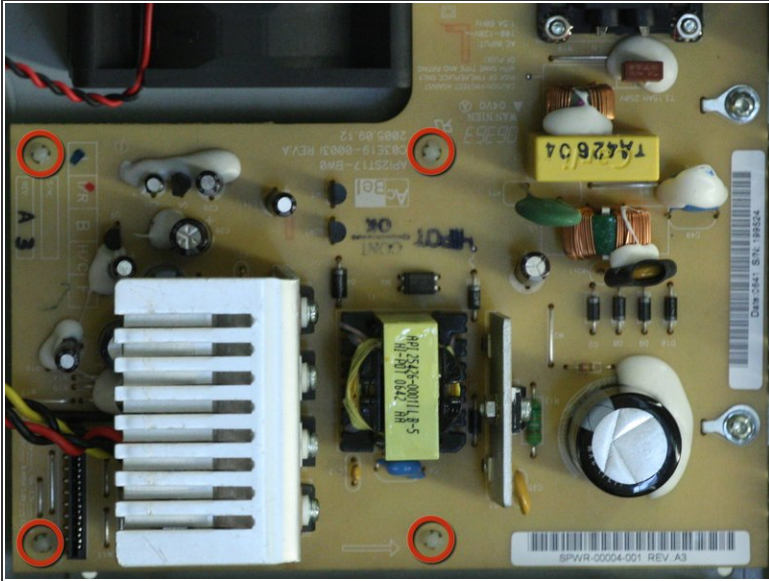
⚠ Do not pull on the power cables when disconnecting power connector.

Step 6



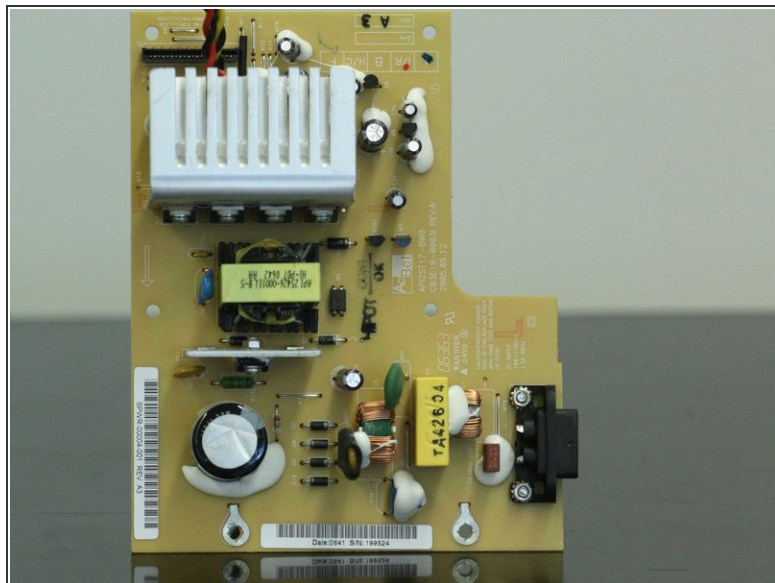
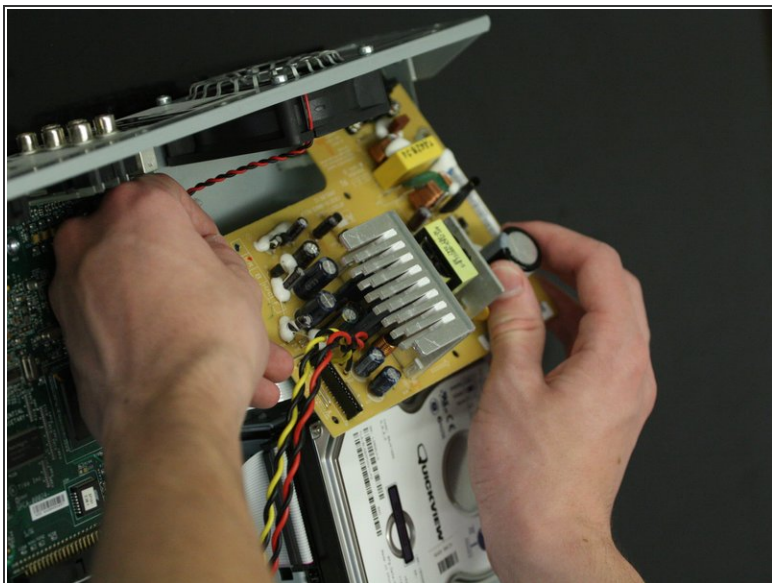
- Rotate the device 180 degrees and remove the two T10 screws from the power supply board.

Step 7



- Remove the four plastic standoffs.
- Use pliers to squeeze the plastic pieces on the head together. Carefully press down on the standoff and pull up on the power supply.

Step 8



- Lift the power supply out of the unit.
- ⚠ Do not touch any circuit elements or capacitors on the power supply, as they may hold a charge after the unit has been shut off.

To reassemble your device, follow these instructions in reverse order.