



Tiger Rice cooker Internal Battery Replacement

This guide will show the steps to replace the internal battery in the rice cooker, which powers the clock when the cooker is unplugged.

Written By: Nils



INTRODUCTION

This provides the steps to replace the internal battery in the JAH-A10A (5.5 cup) Tiger Rice cooker. These steps are likely to apply similarly to other Tiger Rice cookers.



TOOLS:

- [Metric Allen Key Set](#) (1)
- [Soldering Iron](#) (1)
- [Philips Screwdrivers \(one normal, one small\)](#) (1)
- [Desoldering Pump](#) (1)



PARTS:

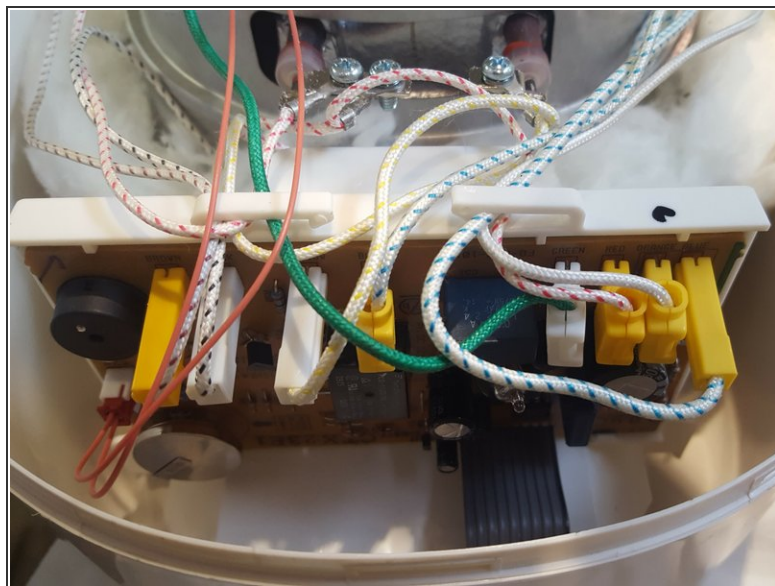
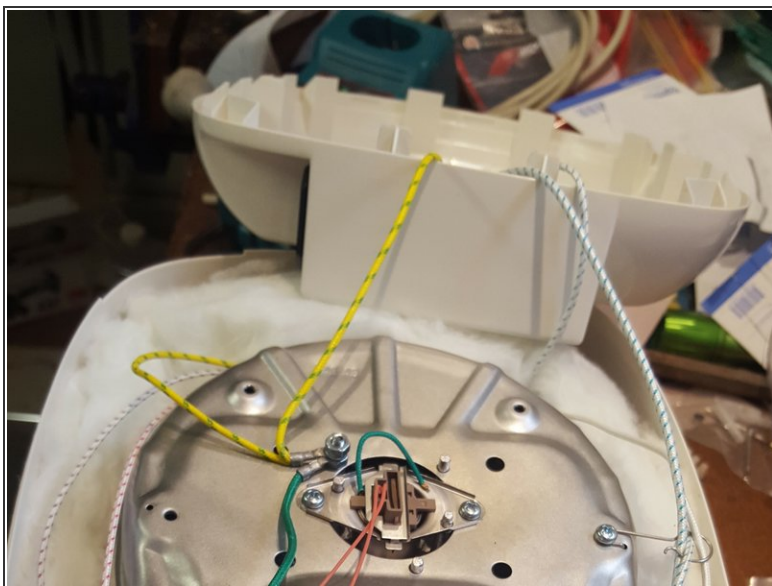
- [CR2450](#) (1)
CR2450 battery with tabbed connectors
CR-2450/H1AN from Panasonic appears to be a suitable part.

Step 1 — Disassemble Base



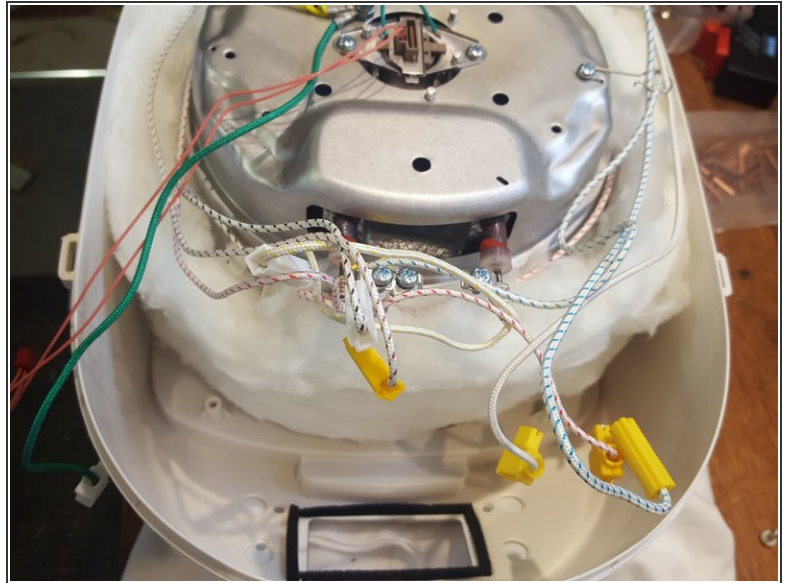
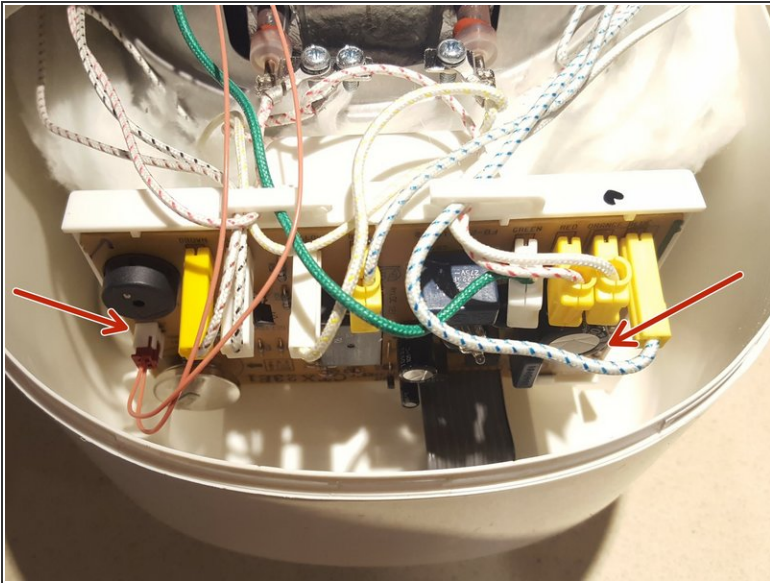
- Unplug the rice cooker!
- Place a soft item on the bench, to prevent scratching the lid
- Remove the four screws from the base. Take note - each screw has a black washer, but the rear two screws also include a white spacer.

Step 2 — Record details of connectors



- Lift the lid off carefully (rotate it from the front to the back). It is attached electrical via cords - treat it very carefully.
- Take note of the connections onto the main board of the rice cooker. Suggest you photograph these connections before you remove any of them!

Step 3 — Remove electronic board assembly



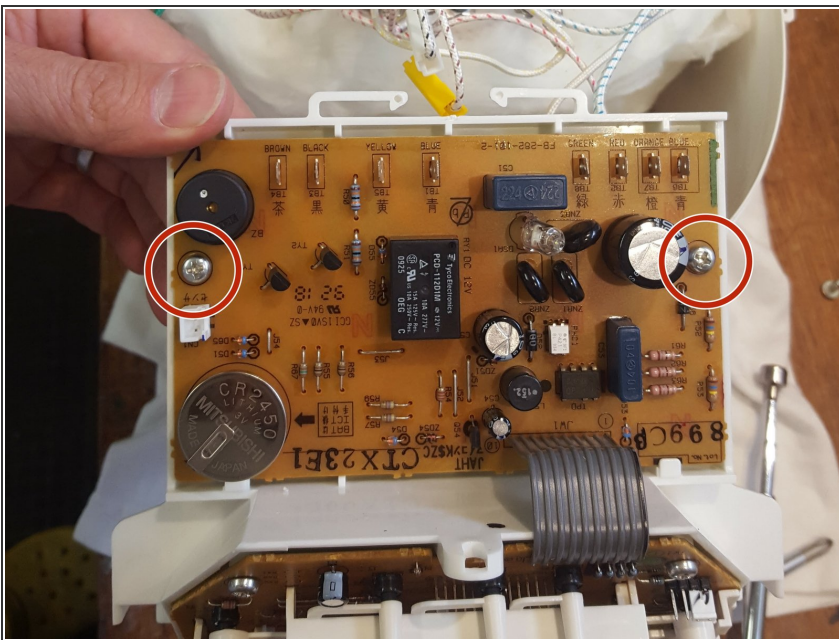
- Remove the two Phillips head screws holding the main electronic board in place. The arrows indicate the location of the two screws (but they are at the back of the board)
- Once the board is removed, disconnect all the electronic cords connecting the board to the rice cooker. As mentioned before, ensure you take a photo of the location of the connectors before removing!
- With the board removed, the LCD panel is exposed. Take care of this and the cavity (as any dirt falling in will cover the LCD panel when re-installed)

Step 4 — Battery details



- With the screws removed, the main board assembly can be lifted out. It is connected to the LCD panel and buttons by flexible cable, so be careful working on the board.
- The battery to be replaced is shown in the picture. As indicated, it is soldered onto the board.
- The battery removed from the board is shown for reference.

Step 5 — Remove board from assembly



- The board must be removed from the assembly.
- Screws are indicated in the picture.

Step 6 — Remove battery & replace



- The battery must be removed by desoldering the two positions shown. Take note of the polarity of the battery before removal.
- Desolder the points and remove the battery.
- Solder the new battery in place, maintaining polarity.
- New battery installed here - the new battery had a plastic ring around it. The tabs may be in slightly different positions and may require manipulation to fit into the existing location
- Once the battery has been connected, check the display panel to see if the clock is flashing - this will indicate the battery is connected.

To reassemble your device, follow these instructions in reverse order.