



Timer Switch Relay Replacement

The guide shows how to replace the relay (transformer) in a timer switch.

Written By: Michelle Mertens



INTRODUCTION

The guide shows how to replace the relay (transformer) in a timer switch. This transformer is used for heater control. Without this transformer, the switch does not work.

The timer switch was bought at Gamma ([link](#)), a large construction store.



TOOLS:

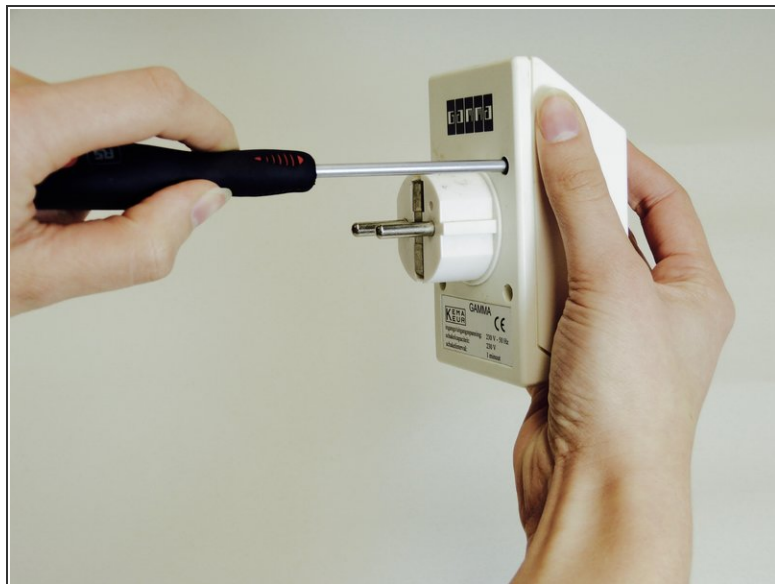
- [Phillips #1 Screwdriver](#) (1)
 - [Soldering Iron](#) (1)
-

Step 1 — Relay



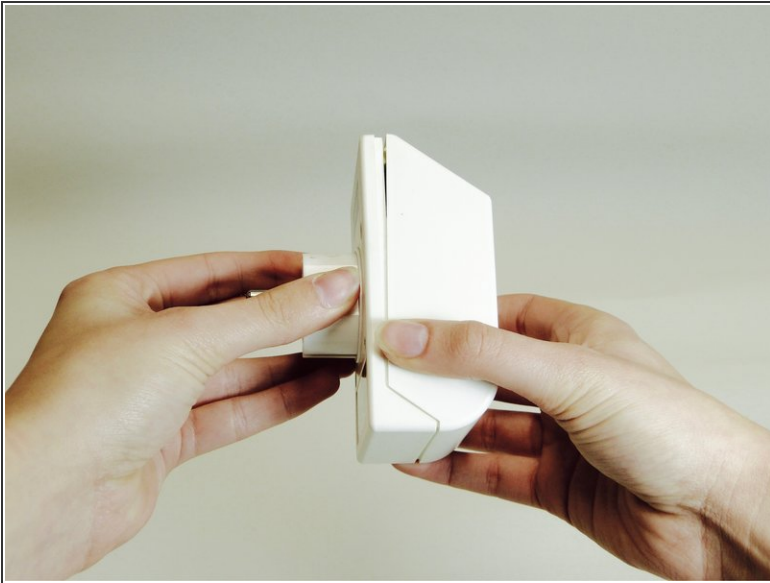
- Locate the screw holes.

Step 2



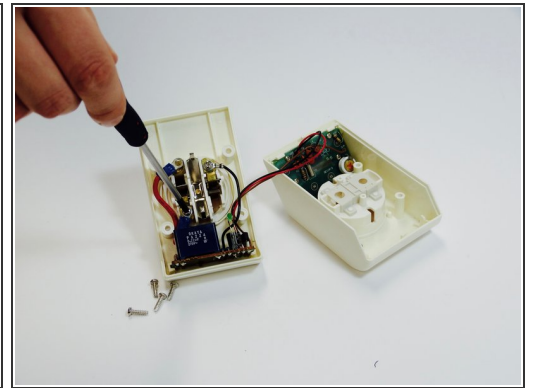
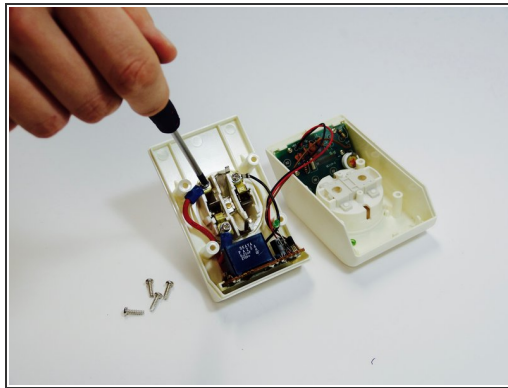
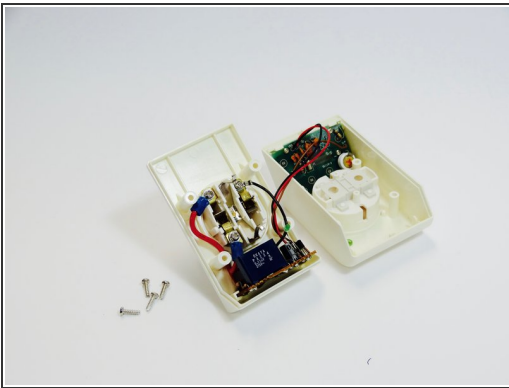
- Use the #1 Phillips head screwdriver to remove the screws. This may cost some prying effort.

Step 3



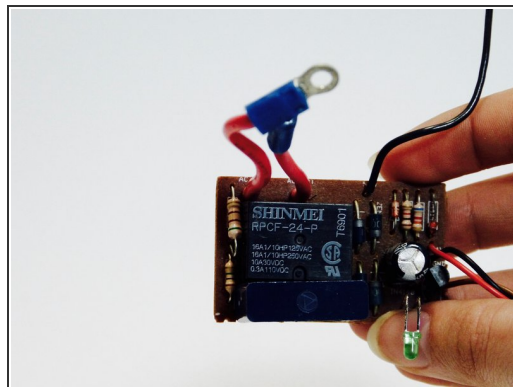
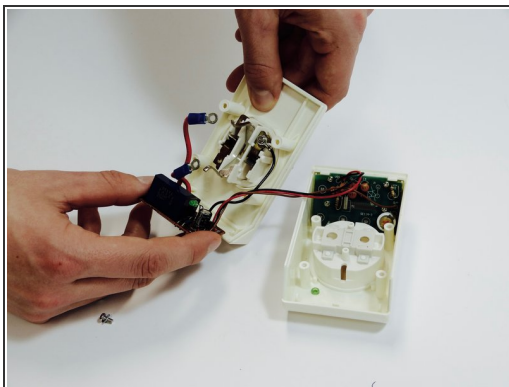
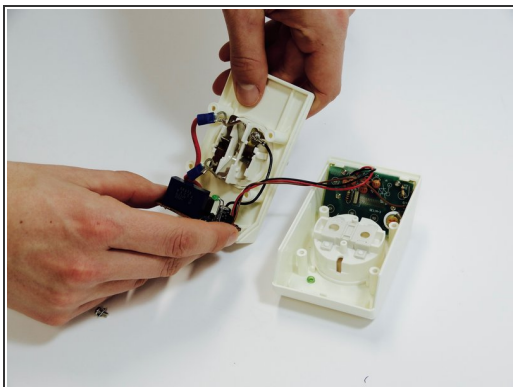
- Open the case by pulling the back case from the front case.

Step 4



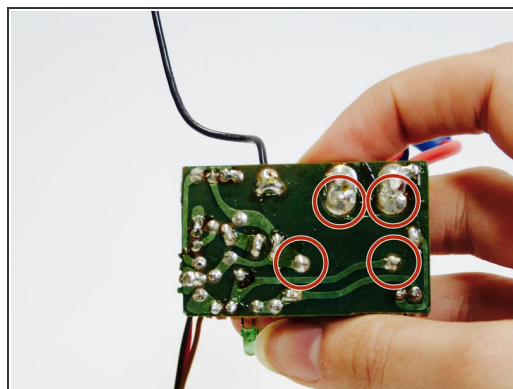
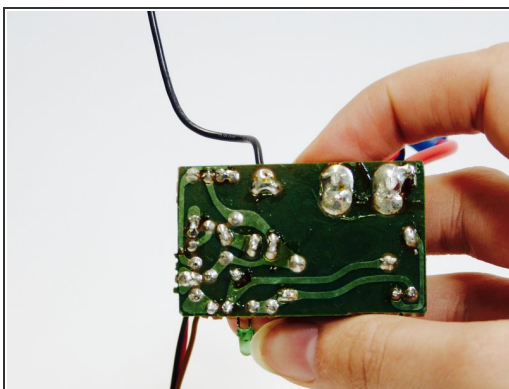
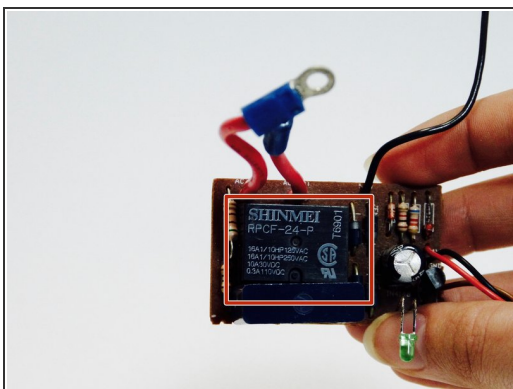
- Use the #1 Phillips head screwdriver to remove the screws on the inside.

Step 5



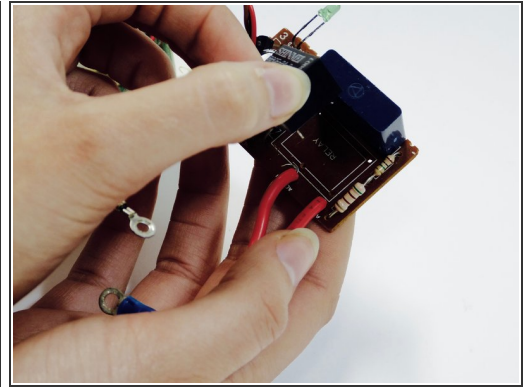
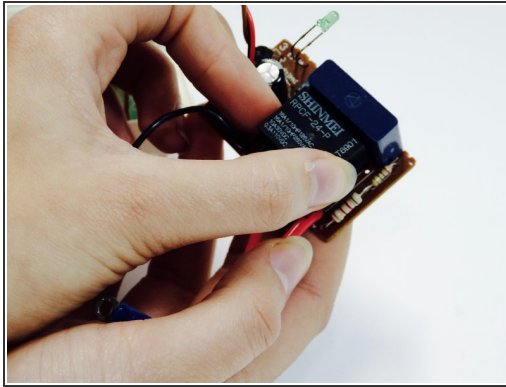
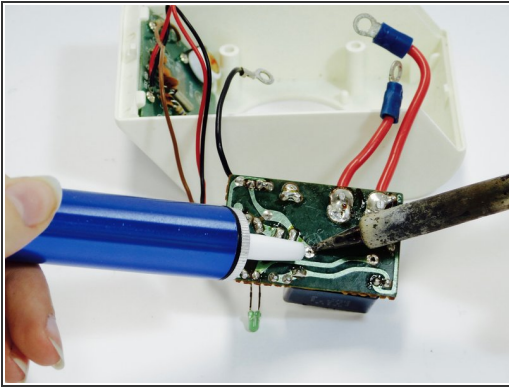
- Pull the PCB (printed circuit board) from the case.

Step 6



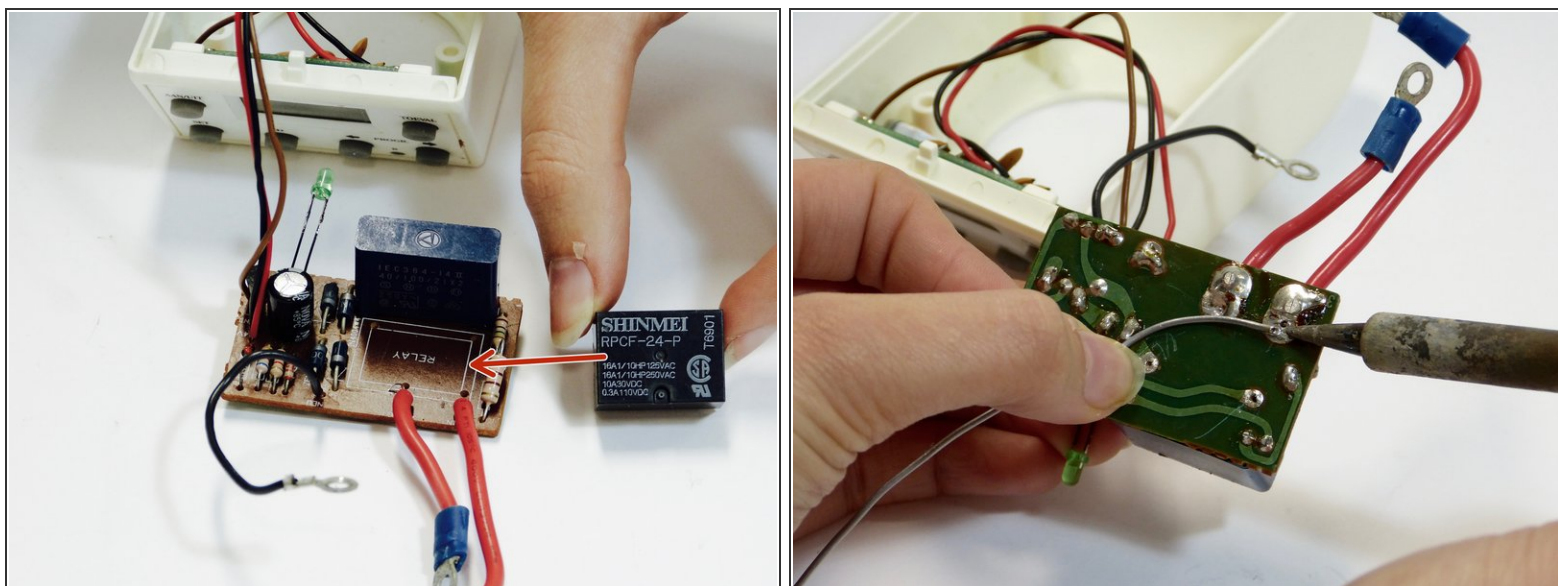
- Locate the relay.
- Locate where the relay is connected to the PCB.

Step 7



- Melt the solder with the soldering iron.
- ⚠ Don't burn yourself by touching the hot soldering iron tip.
- Use the desoldering pump to suck up the old solder.
- Pull the relay from the PCB.

Step 8



- Put a new relay at the same place as the old relay.
- Use new solder and the soldering iron to connect the new relay to the PCB.

⚠ Don't burn yourself by touching the hot soldering iron tip.

To reassemble your device, follow these instructions in reverse order.