



Timex TX5020 LCD Electronic Thermometer Teardown

This guide will tear down the Timex TX5020 LCD Electronic Thermometer to its main components.

Written By: Chris L



INTRODUCTION

The Timex TX5020 is an electronic thermometer that can be used both indoors and outdoors. It requires only a screwdriver to take apart.



TOOLS:

- [Phillips #1 Screwdriver](#) (1)



PARTS:

- [Timex TX5020](#) (1)

Step 1 — Timex TX5020 LCD Electronic Thermometer Teardown



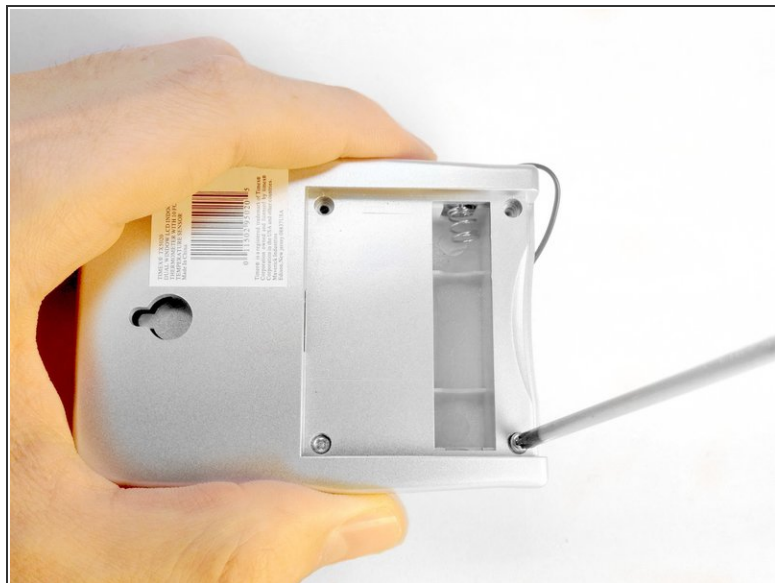
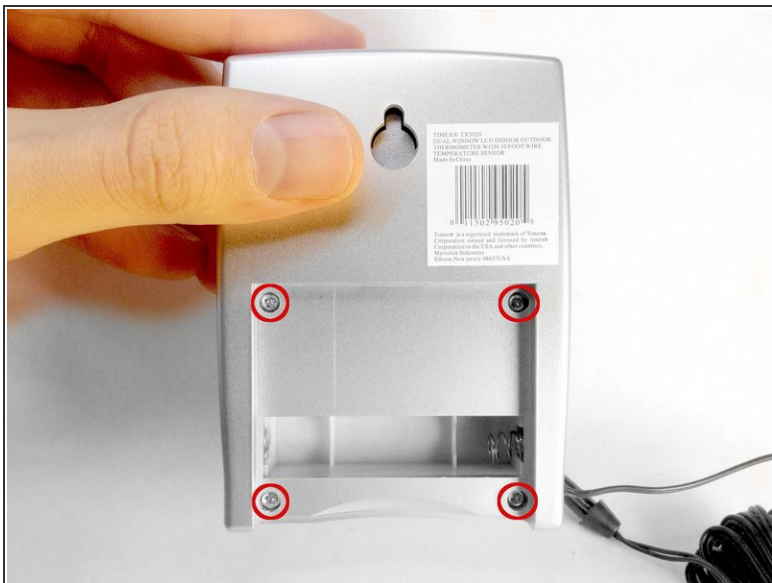
- Here is the fully assembled thermometer.

Step 2



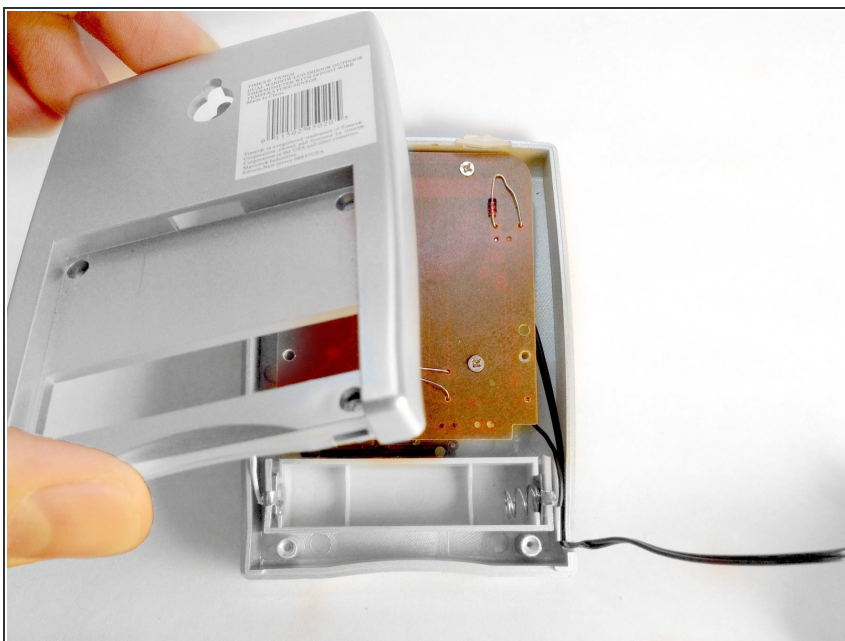
- Slide the battery compartment cover off by applying downward and forward pressure.

Step 3



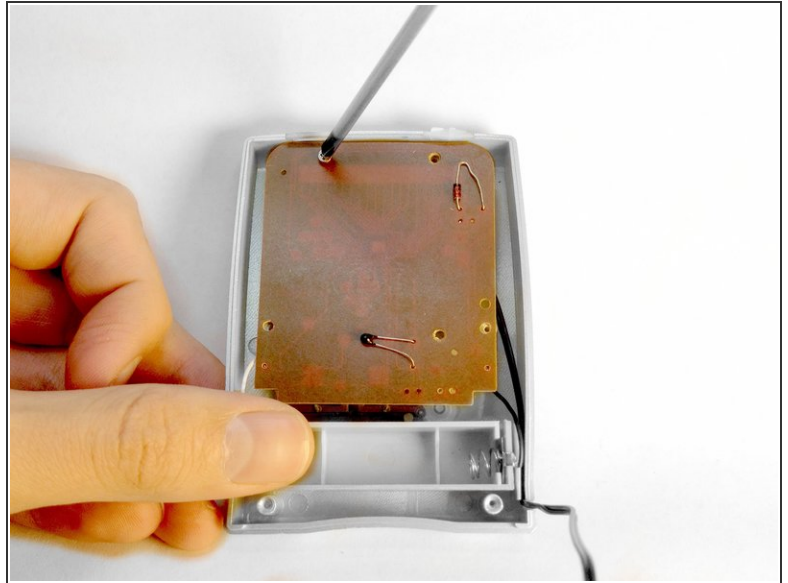
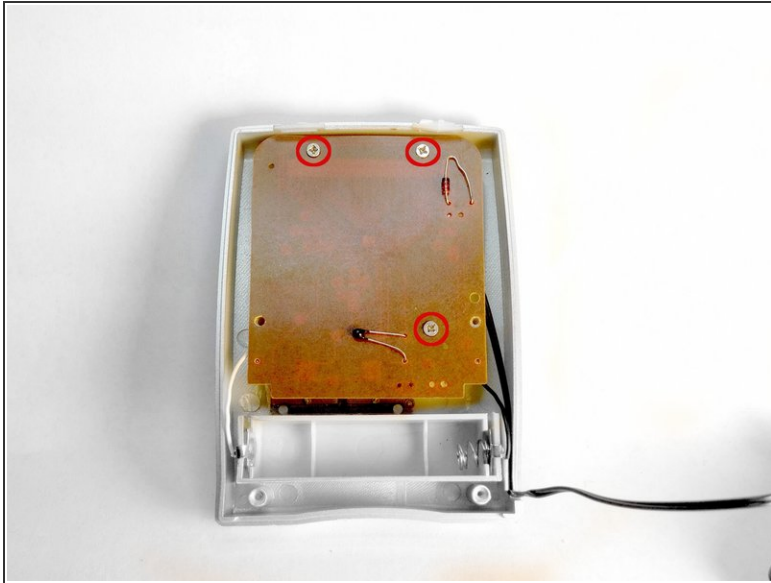
- Loosen and remove the four screws from the back of the thermometer.

Step 4



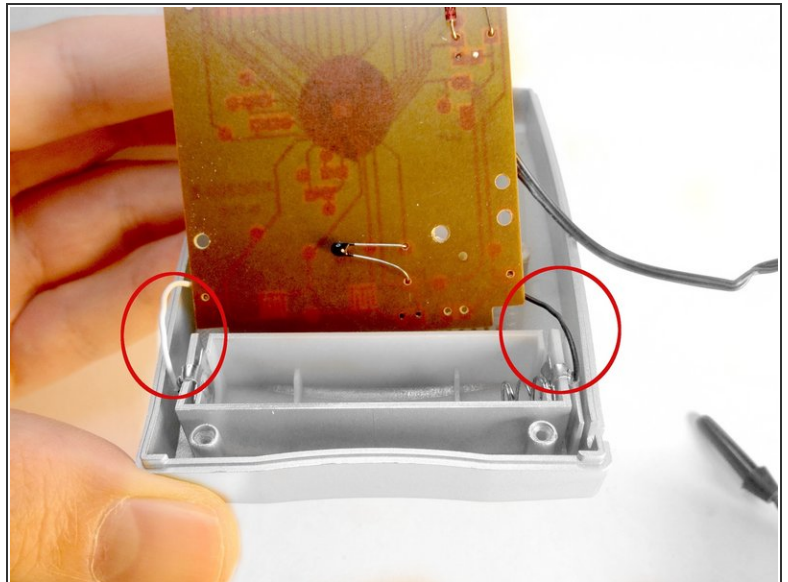
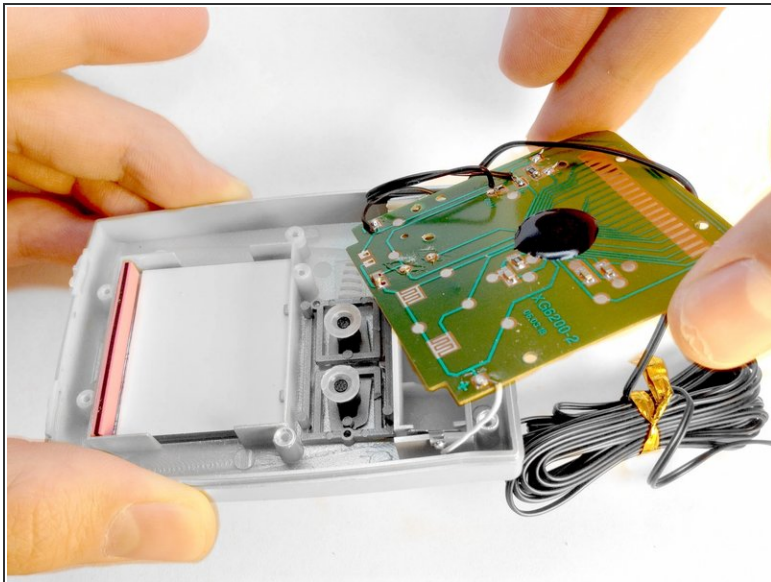
- Lift the back panel away from the rest of the case.

Step 5



- Remove the three screws holding the circuit board in place.

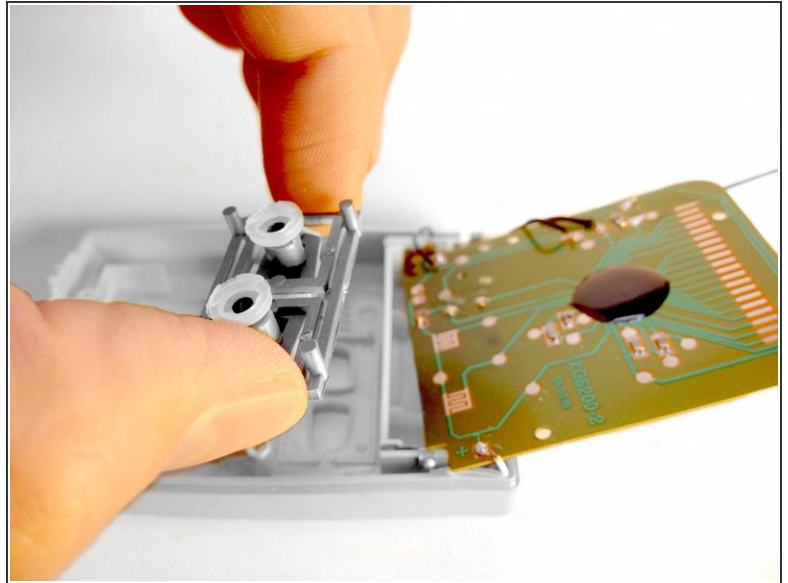
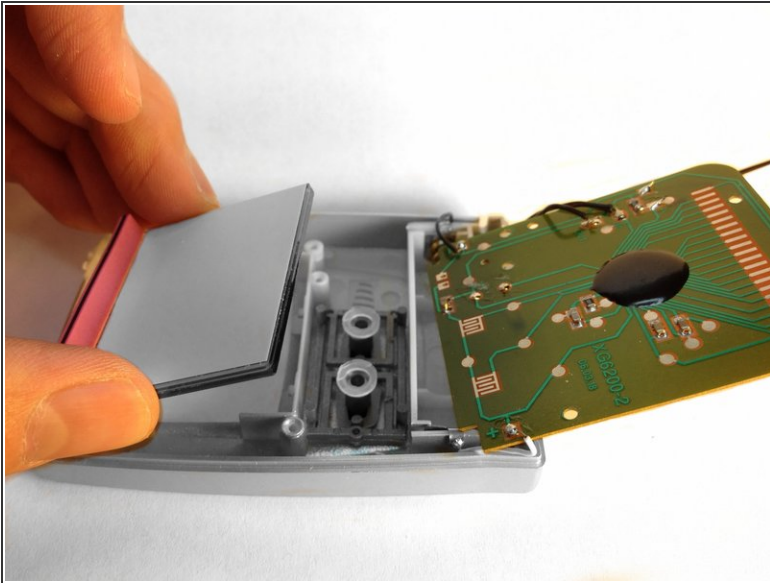
Step 6



- Lift the circuit board away from the case.

⚠ Be careful not to pull too hard as the board is attached to the battery contacts.

Step 7



- Remove the screen from it's compartment.
- Remove the push buttons from their compartment.

Step 8



- Here's a full view of the disassembled components (circuit board, screen, push buttons, and case).

To reassemble your device, follow these instructions in reverse order.