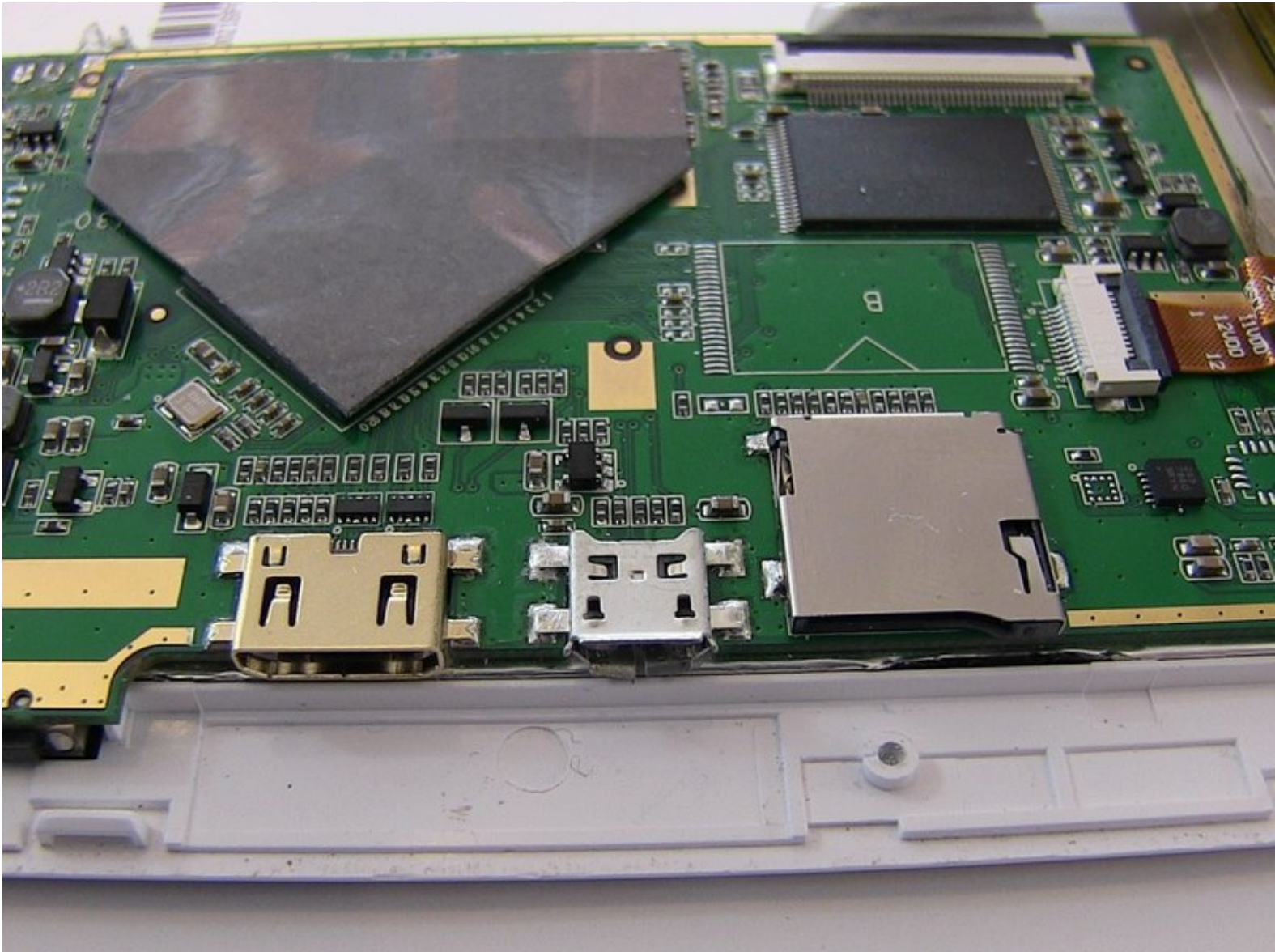




Tivax MiTraveler 10Q-8 USB Charging Port Replacement

This guide will show the steps taken in replacing the USB port.

Written By: Conor Langenbahn



INTRODUCTION

This guide will show the proper way to remove the USB charging port from the device, so that a new one can replace it.

TOOLS:

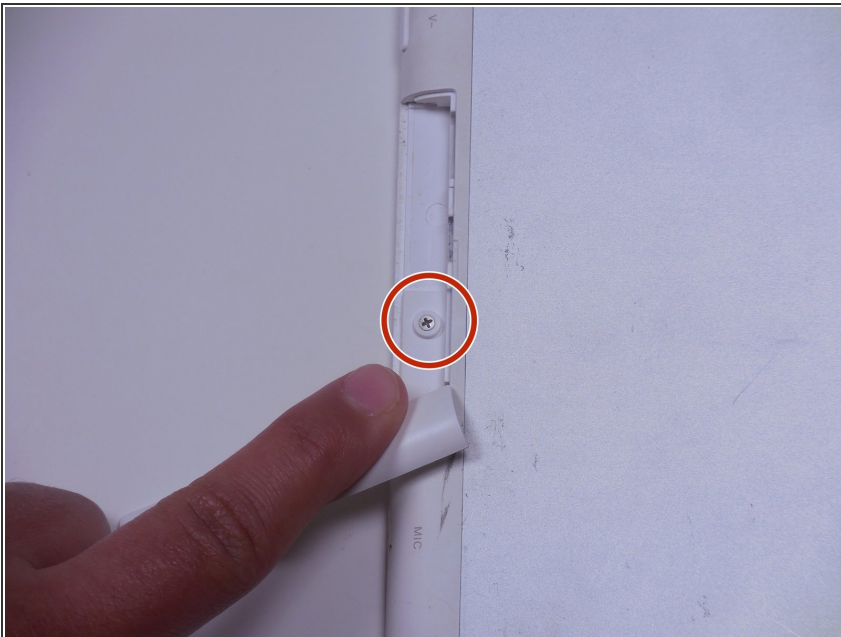
- [Soldering Workstation](#) (1)
 - [iFixit Opening Tools](#) (1)
 - [Phillips #00 Screwdriver](#) (1)
 - [Soldering Iron](#) (1)
-

Step 1 — Rear Case



- With the device face down, slide the charging port cover off on the left side of device.

Step 2



- A phillips 2.88mm screw will be seen at the charging port.

Step 3



- Use a PH000 Philips head screwdriver to remove screw.
- ⓘ Remember lefty loosey, righty tighty

Step 4



- Use the plastic opening tool between the back plate and front plate to pry the back plate off; start at the headphone jack.
- ⓘ Make sure the lip of the plastic opening tool is face up.

Step 5



- Move around the device with the plastic opening tool pushing down to release the back plate from clips.

i You will hear popping sounds when you work around the device.

Step 6



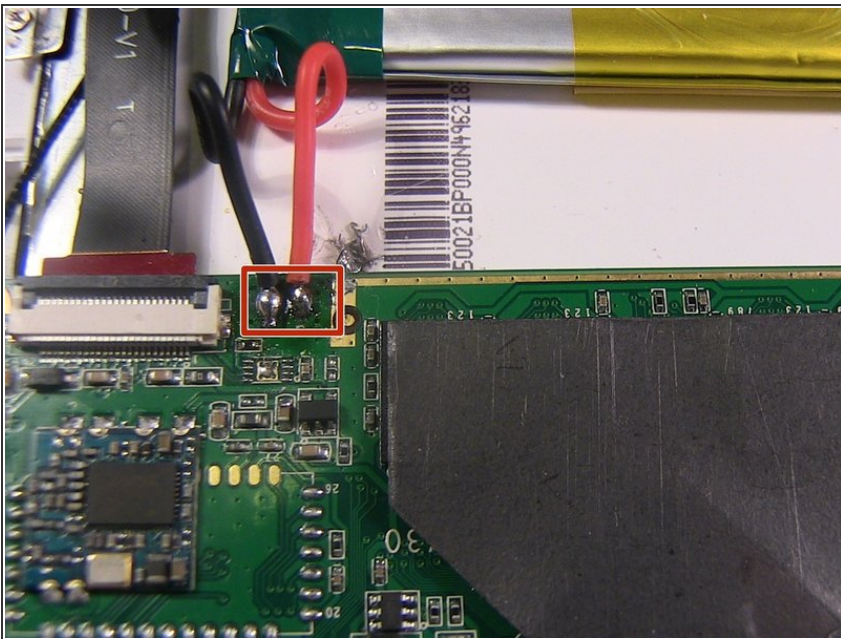
- Once you've moved around the whole device with the plastic opening tool, the back plate will completely release from the rest of the device.

Step 7 — Battery



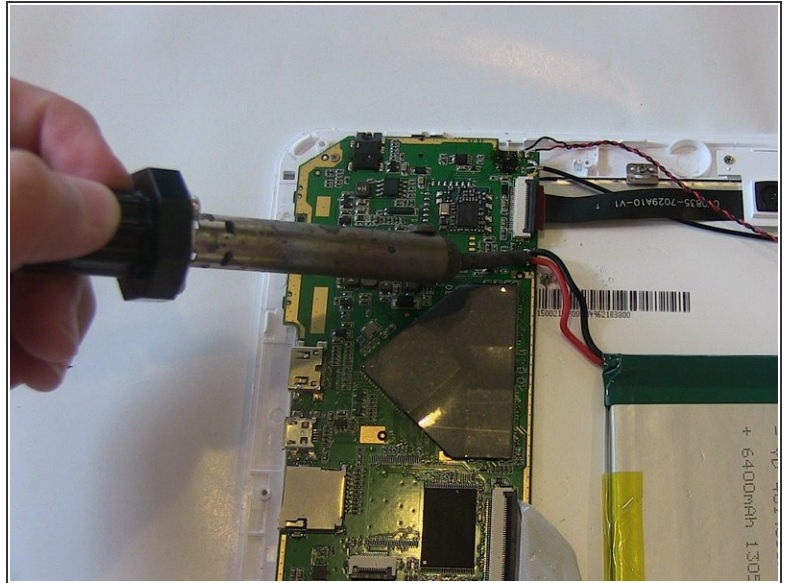
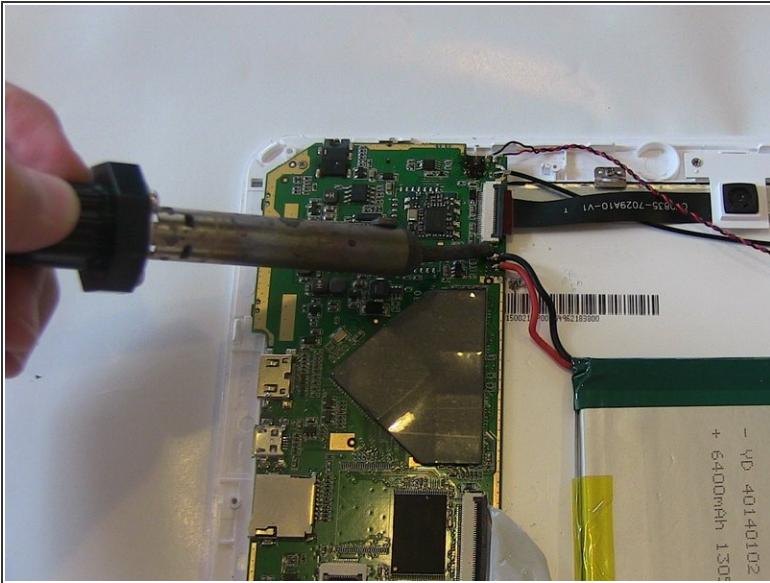
- The battery rests flat on the inside surface of the tablet. It is a rectangular shape and has blue and yellow tape.

Step 8



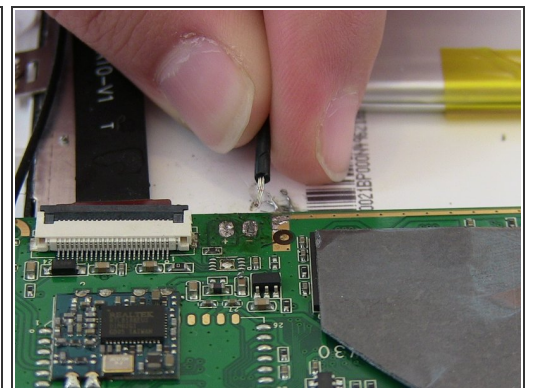
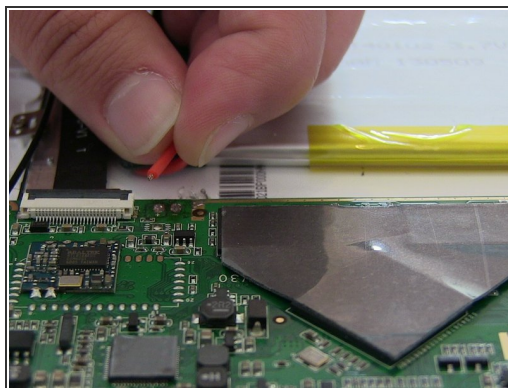
- There are two wires, one red and one black, that need to be desoldered from the motherboard that run to the battery.
- Review how to solder [here](#).

Step 9



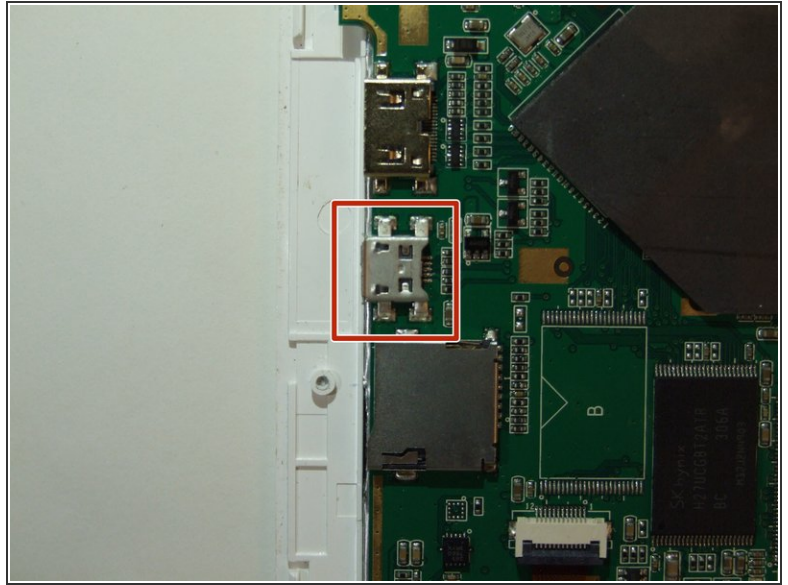
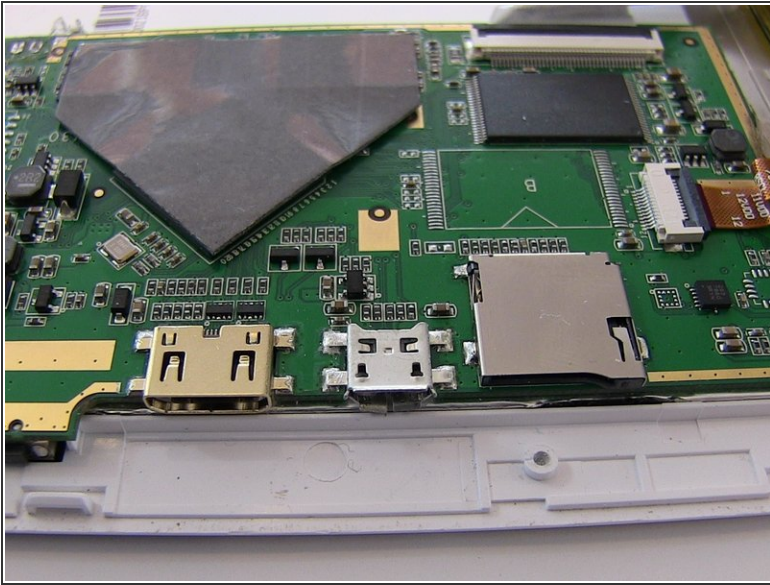
- Work the soldering gun on the red wire where it is connected to the motherboard. it should release from the motherboard.
- Work the soldering gun on the black wire where it is connected to the motherboard. It will release from the motherboard.

Step 10



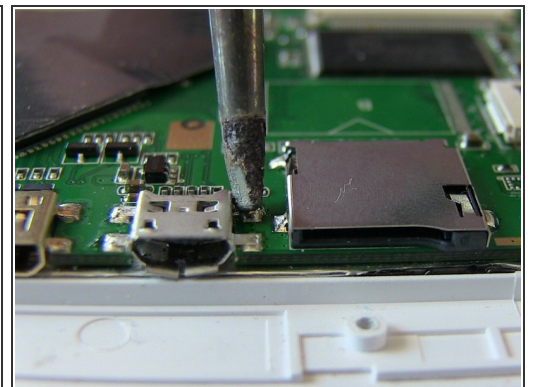
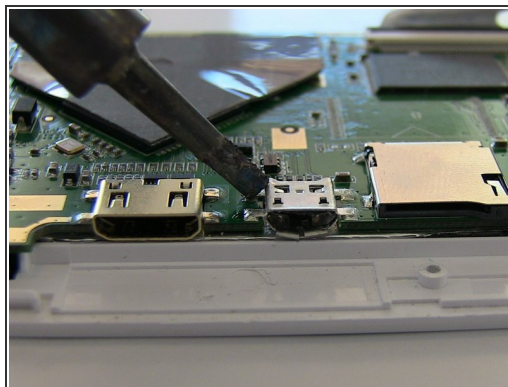
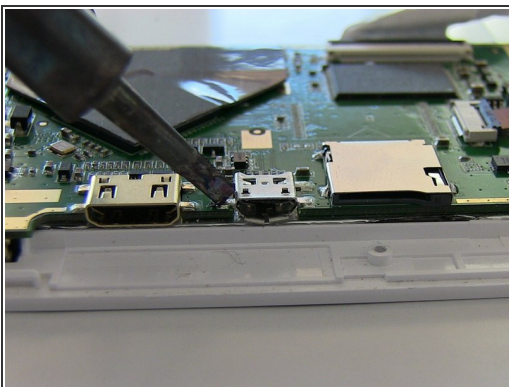
- Once both wires have been desoldered, the battery can be removed from the device.

Step 11 — USB Charging Port



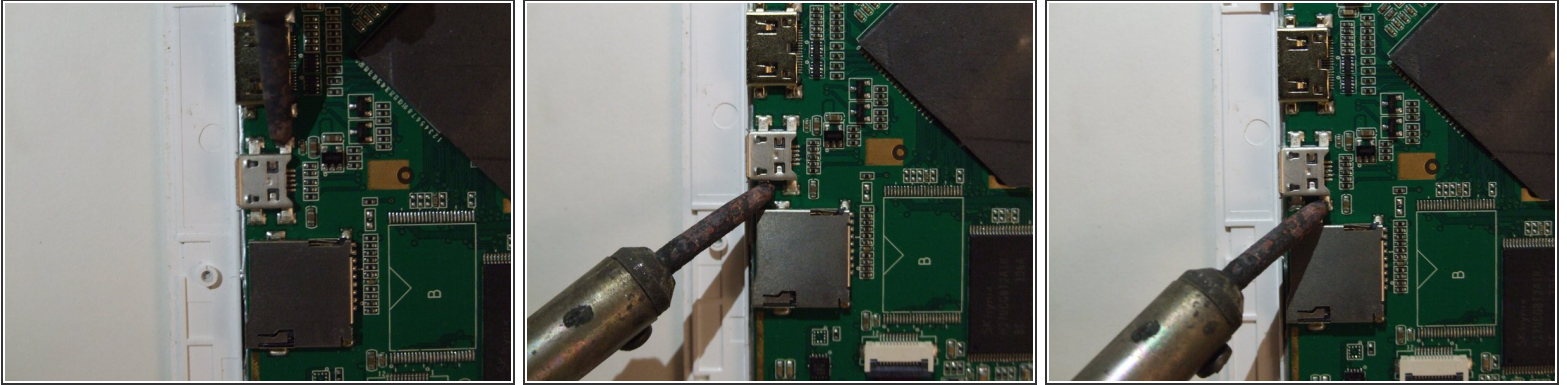
- With the device facing down, the USB charging port can be located on the left side of the device directly on the motherboard. The mini HDMI port will be above the charging port and the micro SD port will be below, with the charging port in the middle of the two.
- ⚠ Make sure all power is extinguished by following the steps to remove the battery.
- The charging port will be soldered down at all four corners; each prong will need to be soldered off.
- Review [How to Solder Here](#)

Step 12



- Work the iron on one prong at a time that is soldered to the motherboard. The USB port will release from the motherboard.

Step 13



- Repeat steps 2-5 for the soldering of the other 3 prongs.
- Once all four prongs have been soldered off the USB charging port will remove from the device.

To reassemble your device, follow these instructions in reverse order.