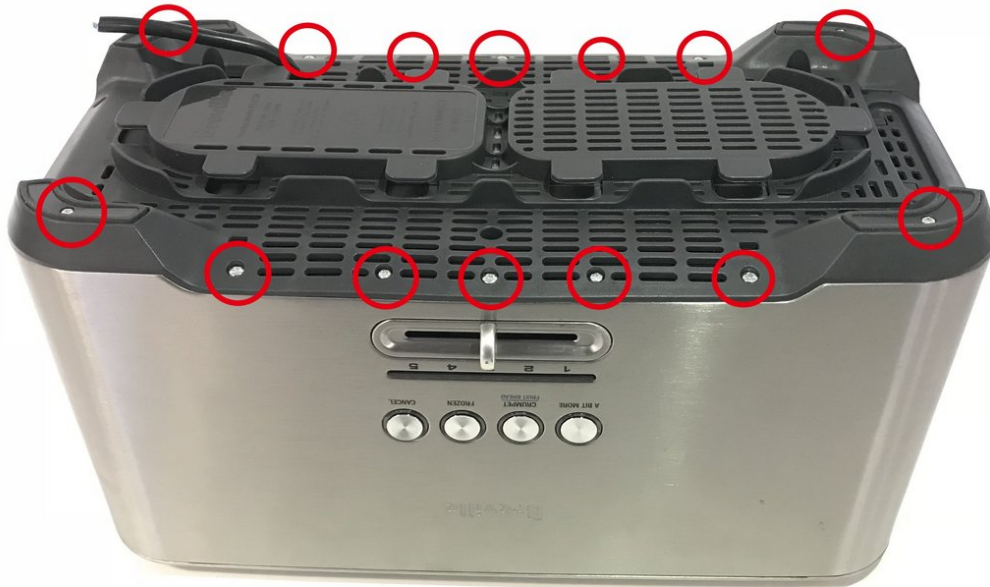




Toaster Teardown

Bread toaster made by Breville.

Written By: Shuman C

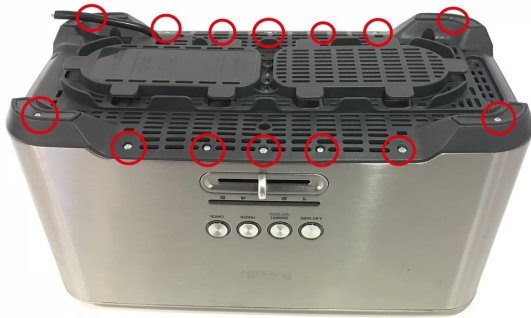




TOOLS:

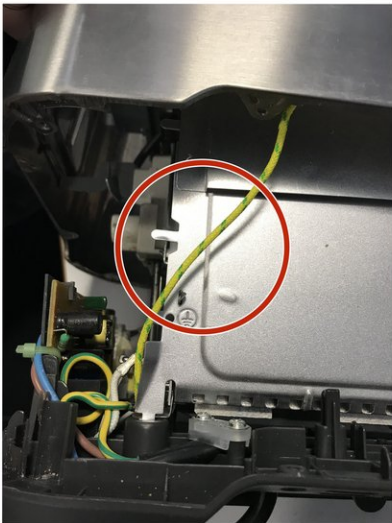
- [64 Bit Driver Kit](#) (1)
-

Step 1 — Remove screws and pedestal



- Remove Breville bread toaster base screws -- 14 places.

Step 2 — Cut wires and remove the shell



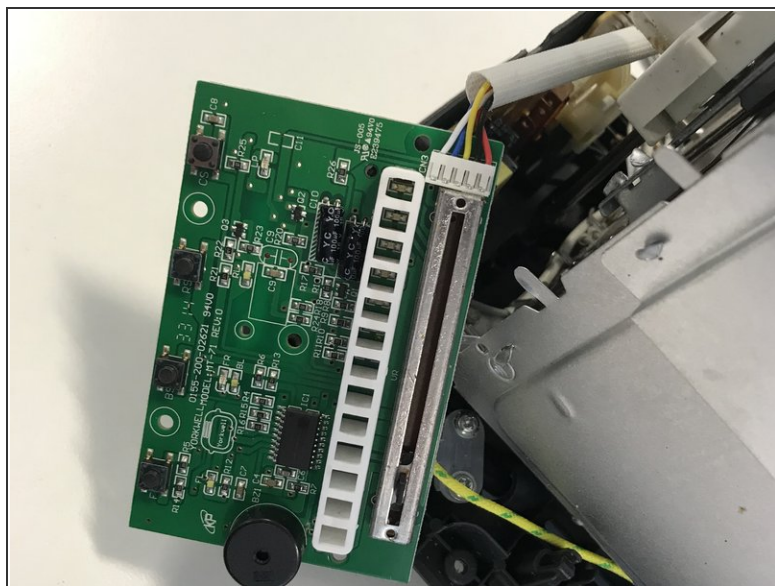
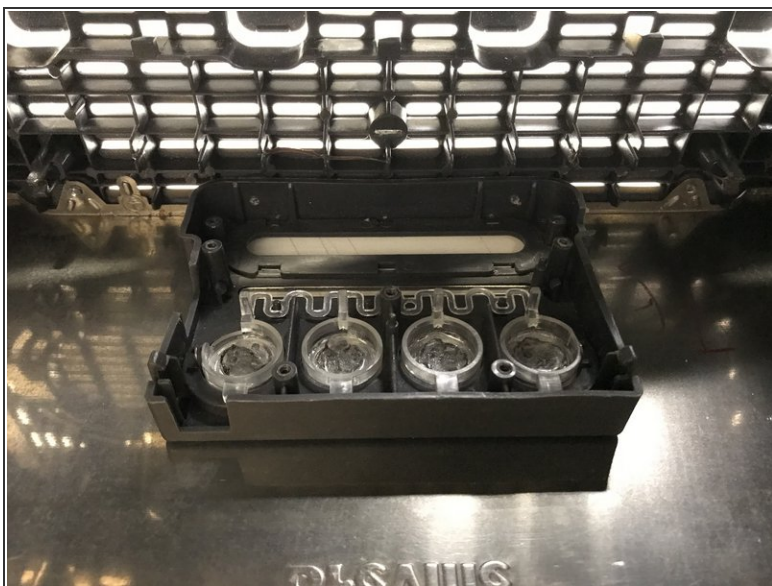
- With a scissor cut the wires connecting the base and the shell.

Step 3 — Remove the wire sheet



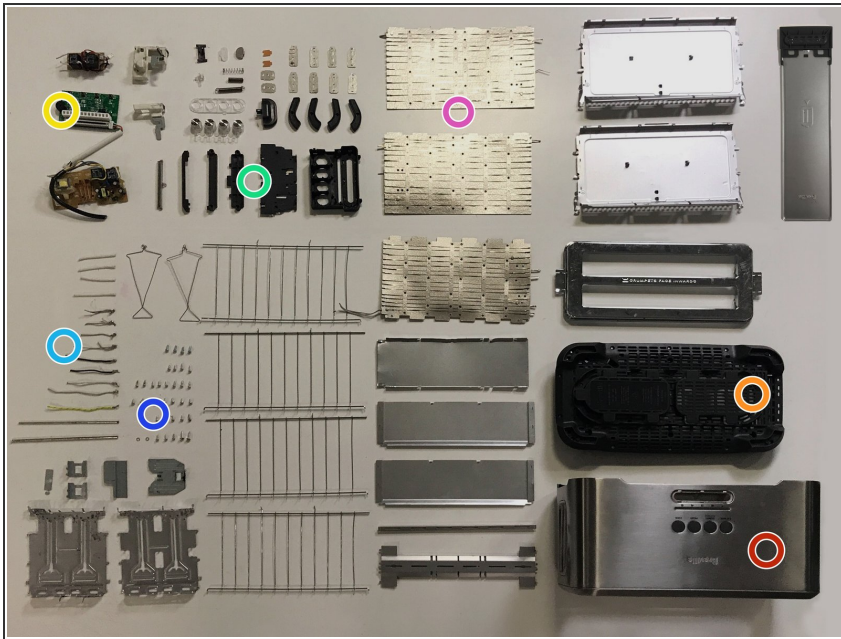
- Break up the inner shell of toaster and the wire sheet.

Step 4 — Remove each parts



- Remove all the parts of shell and base.

Step 5 — Identifying parts



- Shell
- Base
- Heater element -Nickel chrome wire
- Switch assembly - ABS injection moulding
- Circuit board
- Wires
- Screws