



Toilet Fill Valve Replacement

Replace the fill valve in a gravity flush toilet.

Written By: Kristen Gismondi



INTRODUCTION

A failing fill valve can prevent a toilet tank from filling properly, or cause the toilet to fill continuously, wasting excessive amounts of water. Use this guide to replace the fill valve in a gravity flush toilet.



TOOLS:

- [All-Purpose Sponge](#) (1)
- [Adjustable Wrench](#) (1)

Step 1 — Tank Lid



- Lift the tank lid up and away from the toilet tank.

Step 2 — Shutting off the Water Supply to a Toilet



- Shut off the stop valve underneath the toilet by turning it clockwise until it becomes tight.

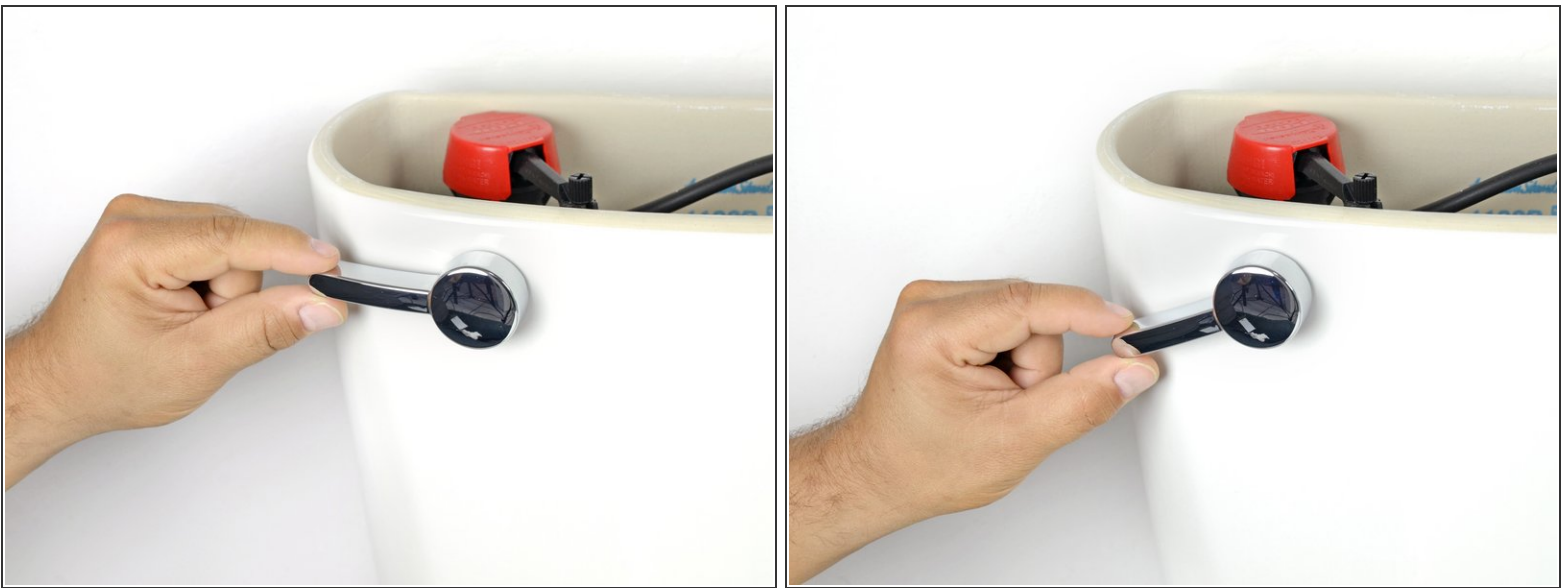
 The appearance of this valve may differ from toilet to toilet, but most operate the same.

Step 3 — Refill Tube



- Disconnect the fill valve's rubber refill tube from the top of the overflow tube.

Step 4 — Draining a Toilet Tank



- Push down the flush lever.
- Hold the lever down until water stops draining from the tank.
- ⓘ A small amount of water will remain in the bottom of the tank.
- ⓘ If the flush lever or pull chain have become disconnected, lift up the toilet flapper to drain the tank.

Step 5 — Sponge Drying a Toilet Tank



- Use a sponge to soak up and remove any remaining water from the toilet tank.
- Periodically squeeze the excess water from the sponge.

Step 6 — Supply Tube



- Place a bucket under the supply tube to catch any dripping water.
- Turn the coupling nut on the supply tube clockwise until it releases from the threaded shank on the bottom of the tank.

Step 7 — Fill Valve



- Using an adjustable wrench, turn the locknut on the threaded shank counter-clockwise until it becomes loose.

Step 8



- Turn the locknut counter-clockwise until it releases from the threaded shank.

Step 9



- Lift the entire fill valve out of the tank.

- ☑ When installing a new valve, be sure to adjust the float so that the water line stops one inch below the overflow tube.

To reassemble your device, follow these instructions in reverse order.