



Toilet Tree TTP-TRIM-1 Blade Replacement

Replace broken or worn timmer blades to restore the utility of your Toilettree nose & ear trimmer.

Written By: samuel fontanez



INTRODUCTION

The blades on the Nose & Ear trimmer eventually wear out and require replacement. The following steps will guide you through how to safely and successfully replace these blades.



TOOLS:

- [Tweezers](#) (1)



PARTS:

- [AA Batteries](#) (1)

Step 1 — Battery



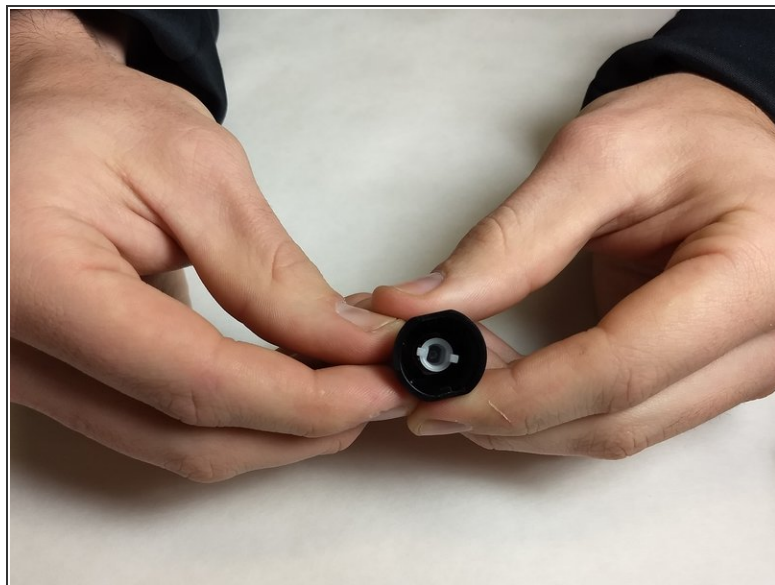
- Twist the battery cap found on the bottom of the device counterclockwise.

Step 2



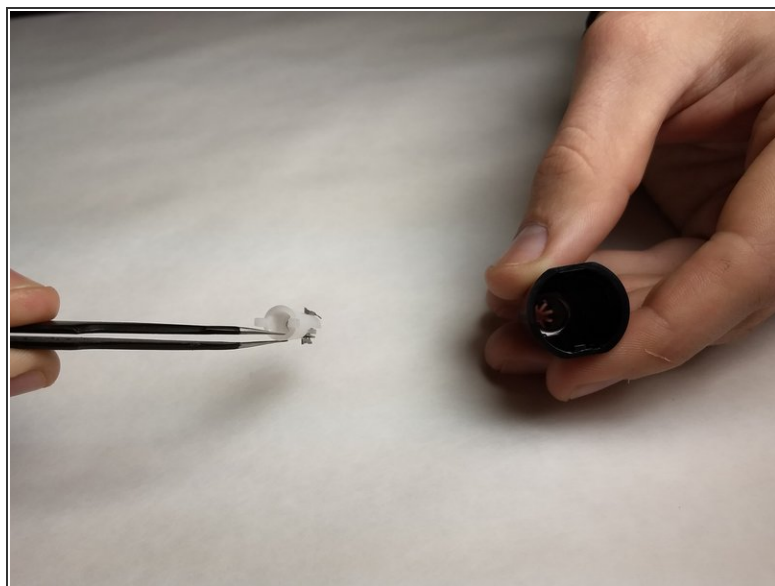
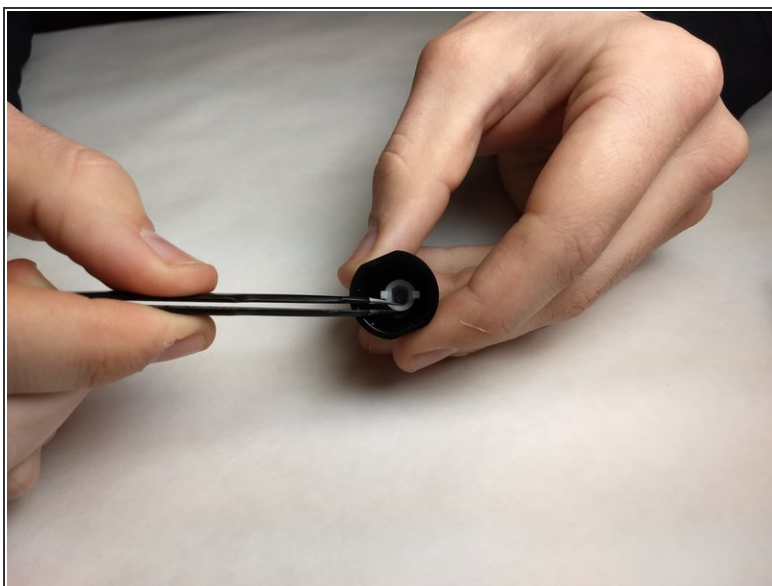
- Remove the battery

Step 3 — Trimmer Blades



- Twist the tip of the trimmer counterclockwise to remove it.
- The trimmer blade assembly will be located on the inside of the tip.

Step 4



- Using the tweezers, pull the blade assembly out of the trimmer tip.

To reassemble your device, follow these instructions in reverse order.