



Tolino Shine Screen Replacement

Remove and replace a broken screen for the Tolino Shine

Written By: Francis Santens



INTRODUCTION

The Tolino's screen broke and only one half was working anymore. This guide shows you how to replace it.

You can also just order the screen from another website you just need to make sure it is a ED060XG1 LF. The T1-11 is according to this website (<https://e-ink-reader.ru/pvi-marking-en.php>) more a batch number and should not matter.



TOOLS:

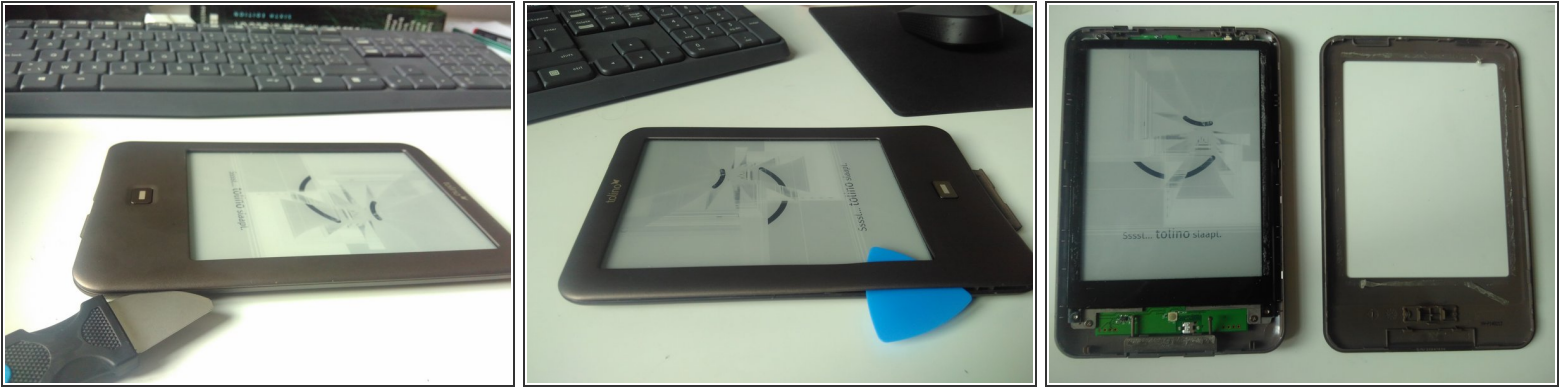
- [Knife \(pocket knife or utility knife\)](#) (1)
- [Phillips #0 Screwdriver](#) (1)



PARTS:

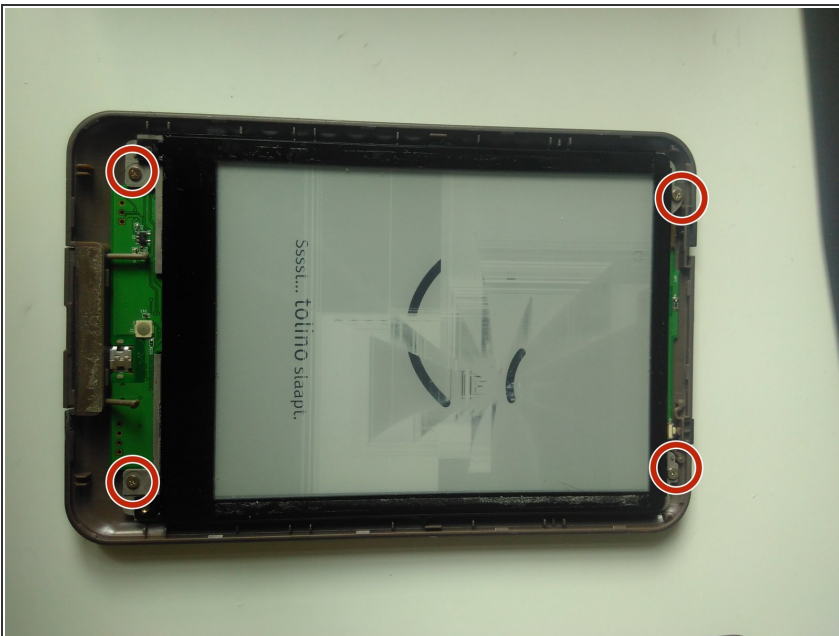
- [New screen](#) (1)

Step 1 — Remove front cover



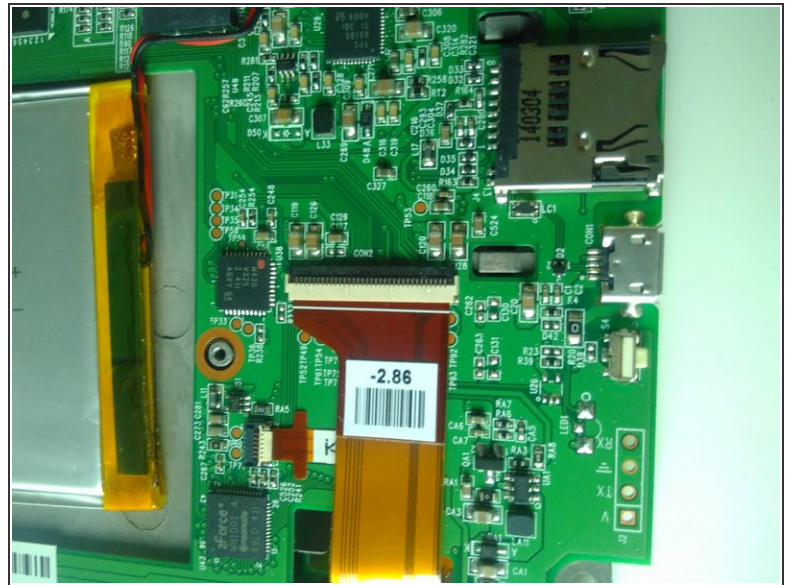
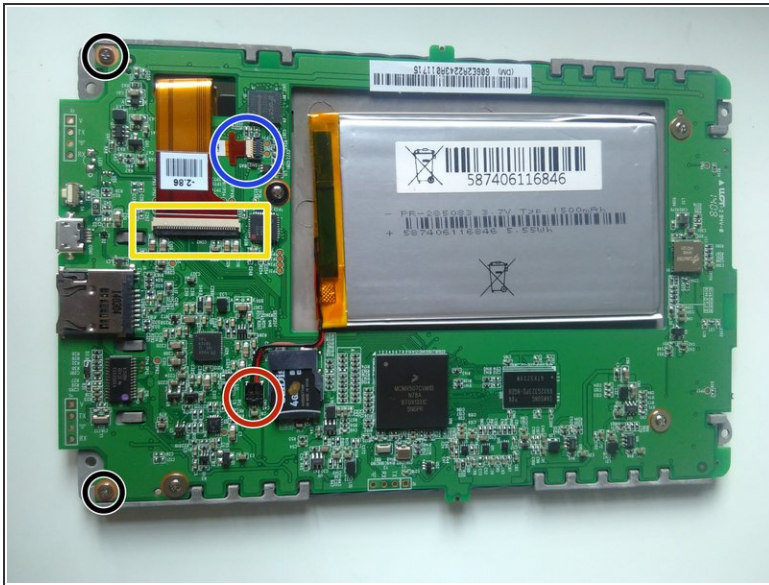
- The front cover and back cover are glued together, we want to open the device by squeezing something in between, e.g. a not too sharp knife
- Once you made an opening between the two covers, go around the whole device. I used a plastic little tool not to damage whatever is underneath, but you can use the knife as well.

Step 2 — Remove the back cover



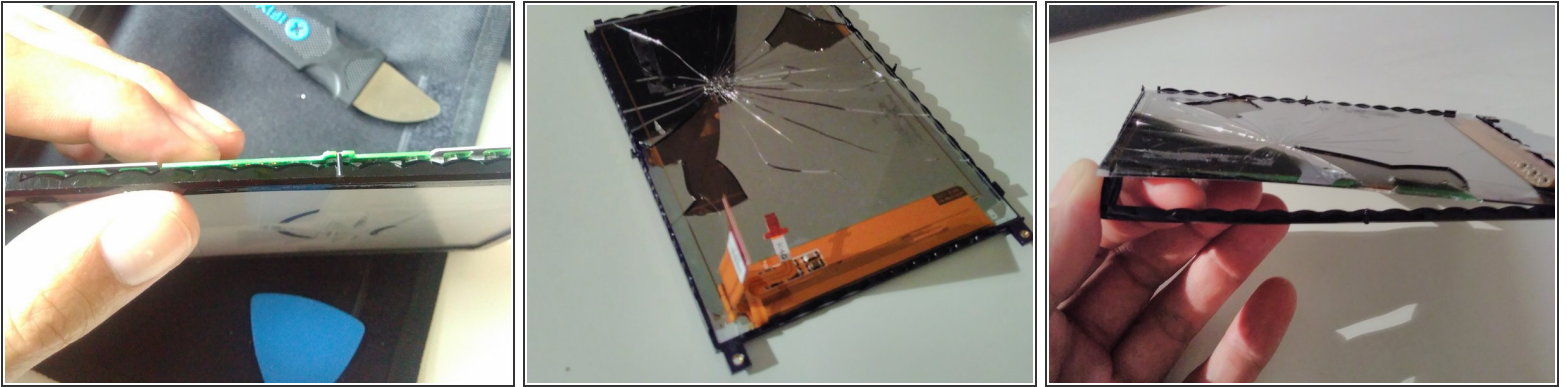
- Remove the back cover by unscrewing the 4 screws indicated in red

Step 3 — Disconnect the battery and screen



- First disconnect the battery by pulling the red and black cable (indicated with a red circle) away from the printboard. You might have to pull quite hard
- Disconnect the first screen cable by lifting the black piece of the long connector (indicated in yellow) away from the circuit board. The cable should then slide out
- Disconnect the second cable (marked in blue) of the screen by lifting the white part of the connector. Once the white part is up, the cable slides out.
- unscrew the screen from the print board (screws indicated in black on the first picture)

Step 4 — take off the screen



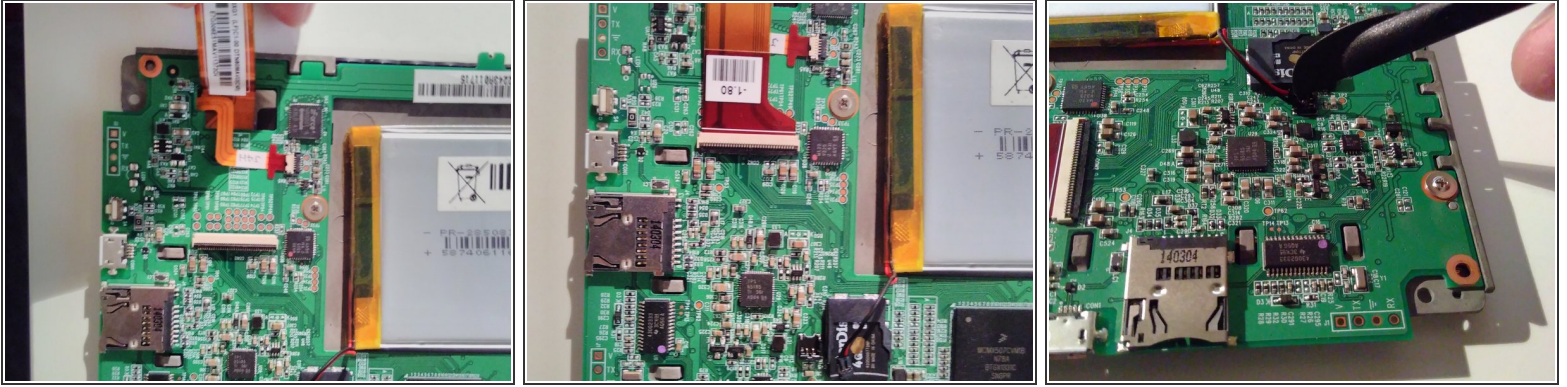
- Squeeze something between the print board and the screen to take it off. The screen is glued at certain spots, so the screen will scatter in pieces.
- After you separated the two you end up with a screen in a black frame. Make sure that there is no more glass sticking to the back of the print board.
- Next, take the broken screen out of the black frame by pushing it out with your fingers.

Step 5 — Put the new screen in



- Take of the protective plastic from the cover
- Put the black frame on the screen
- Pull the cables through the print board
- Click the print board on the two pins of the black frame. One of them is indicated on the picture with a pink arrow

Step 6 — connect the new screen



- First connect the small connector, then the bigger one. Push the cables all the way in the connectors and close them. Make sure you push the cables in far enough. Close the small connector by pushing the white part of the connector down towards the cable and close the big connector by pushing the black part down away from the cable
- Once the screen is reconnected you can reconnect the battery by pushing the connector back in from the top down (see third picture).
- Fix the screen on the board by screwing the screws back in place

Step 7 — test + reassembly



- put the tolino back in it's back cover. Mind that the on switch fits well on the switch of the plastic cover (see blue circle on picture)
- Flip the on switch once to see if the screen works. Also test the touch and the backlight. If one of them does not work, take the back cover off again and reconnect the cables of the screen.
- If everything works screw the screen in place (see red circles)
- click the front cover on again and you're done!

To reassemble your device, follow these instructions in reverse order.