



# TomTom GO 500 Display or Digitizer Replacement

Replace the broken display screen or digitizer on your TomTom GO 500.

Written By: Jennie Chang



---

## INTRODUCTION

If the device's screen is experiencing problems in its visuals, such as discoloration or image distortion, your device may need a display replacement. Otherwise, if the device does not register touches then you may want to replace the digitizer. Confirm the device is powered off before starting the disassembly.



### TOOLS:

- [T5 Torx Screwdriver](#) (1)
  - [iFixit Opening Tools](#) (1)
  - [Precision Tweezers Set](#) (1)
  - [Phillips #000 Screwdriver](#) (1)
-

## Step 1 — TomTom GO 500 Opening the Device



- Unscrew the two 3mm screws at the base of the device using the Torx T5 screwdriver.

## Step 2



- Using the plastic opening tools, insert one opening tool into the gap between the screen casing and the motherboard casing. Then insert the other tool into one of the adjacent sides and slide it around the top.
- ⓘ There are 14 latches that need to be undone.
- ⚠ The latches break easily during the opening process so we recommend purchasing a new screen casing if they break.

### Step 3



- With the screen casing unlatched, locate the right side where the two connectors are.

### Step 4



- Unlatch the connectors using the plastic opening tool.
- i** The orange rectangular connector may have come off in the process of removing the screen casing.

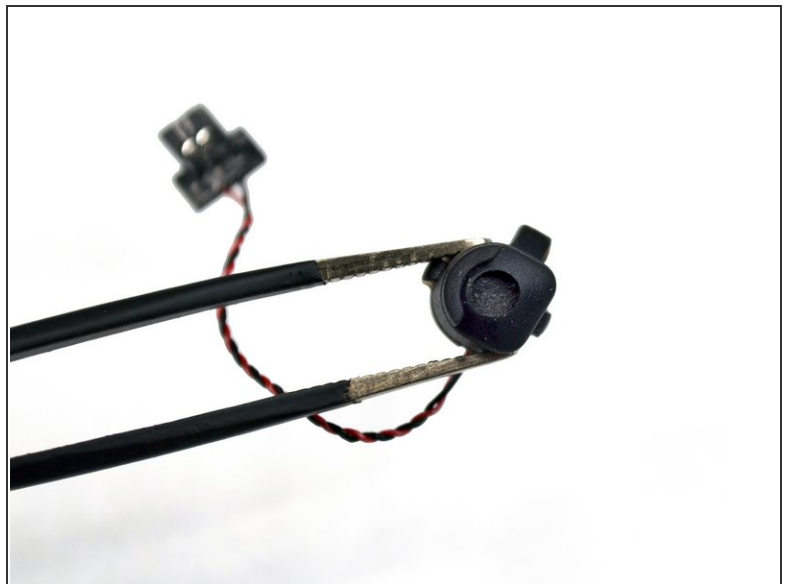
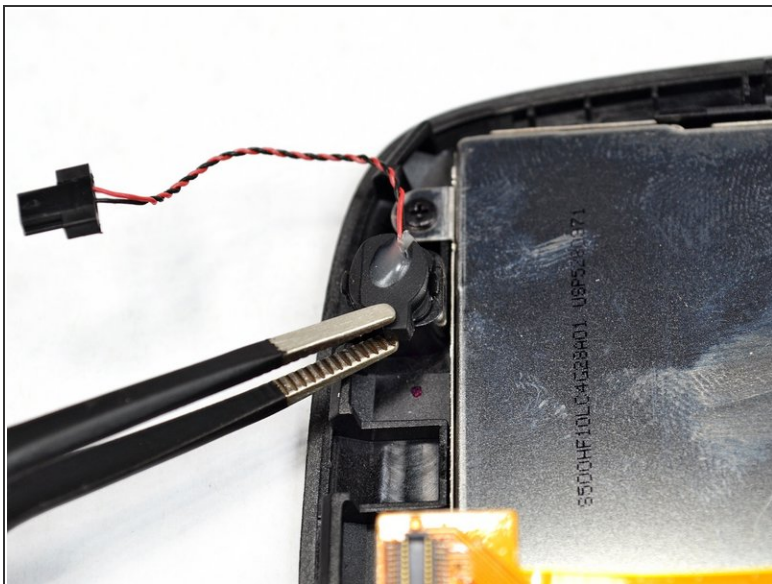


## Step 5



- Separate the screen casing from the motherboard casing.

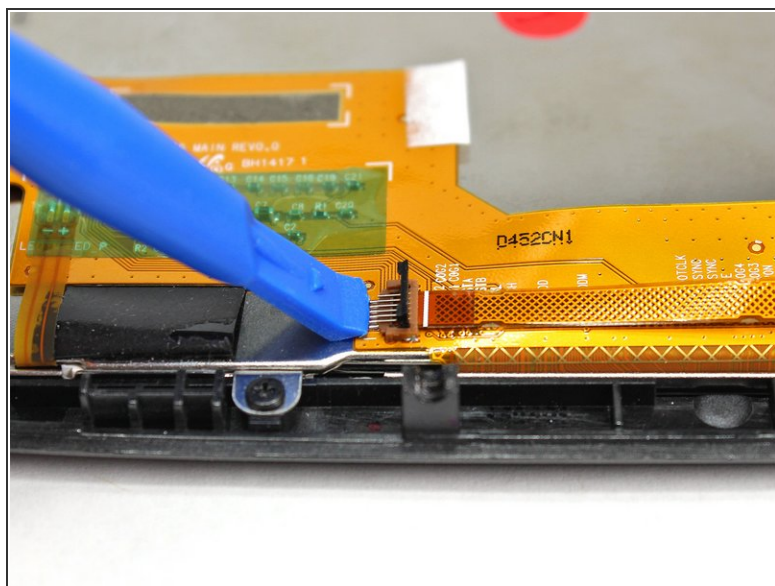
## Step 6 — Display or Digitizer



- Remove the microphone on the left side of the screen casing using tweezers.

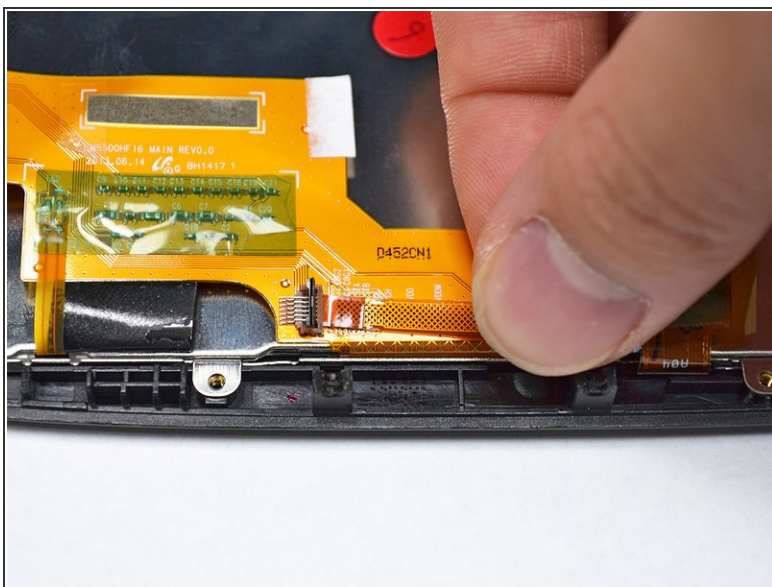
⚠ Use tweezers with rounded tips to avoid damaging the microphone.

## Step 7



- Lift up the small black tab on the orange connector using a plastic opening tool. This releases the strip connecting the display to the digitizer.

## Step 8



- Slide the connector strip out from the tab.



## Step 9



- Unscrew the eight 2.5mm screws along the perimeter of the display using the Phillips #000 screwdriver.

## Step 10



- Separate the display from the digitizer. The display is now fully removed from the device.

To reassemble your device, follow these instructions in reverse order.