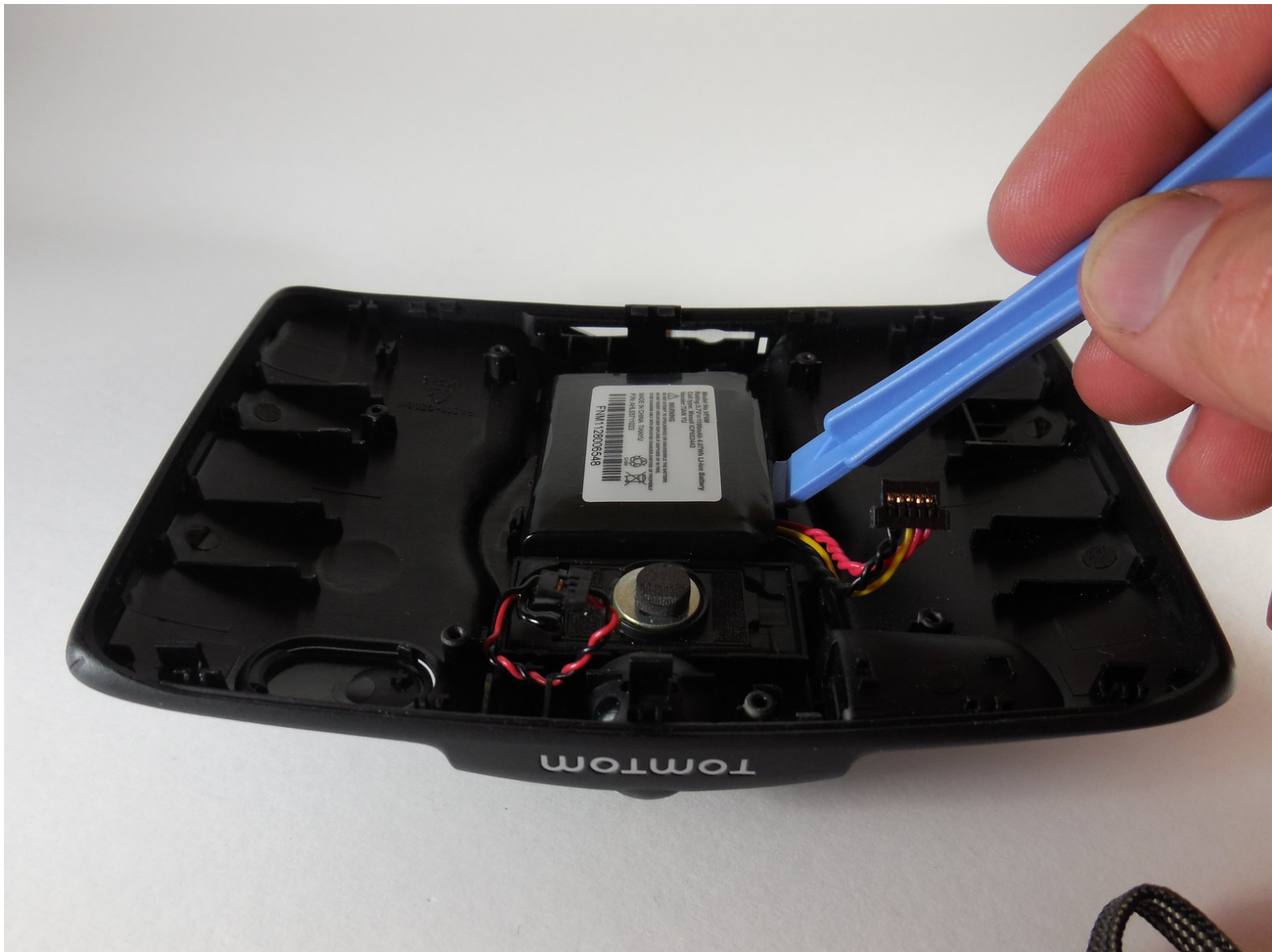




TomTom GO Live 1535M Battery Replacement

In this guide we will disassemble the device to remove the battery.

Written By: Mathias Sagide





TOOLS:

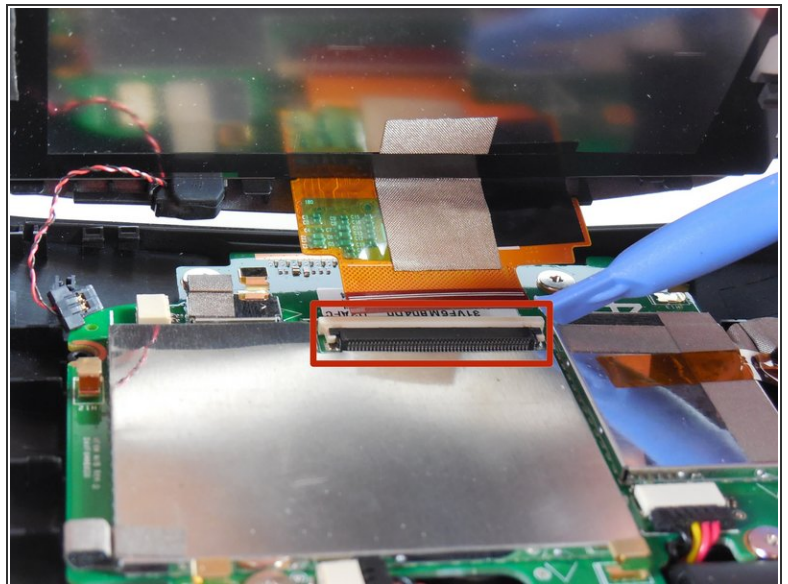
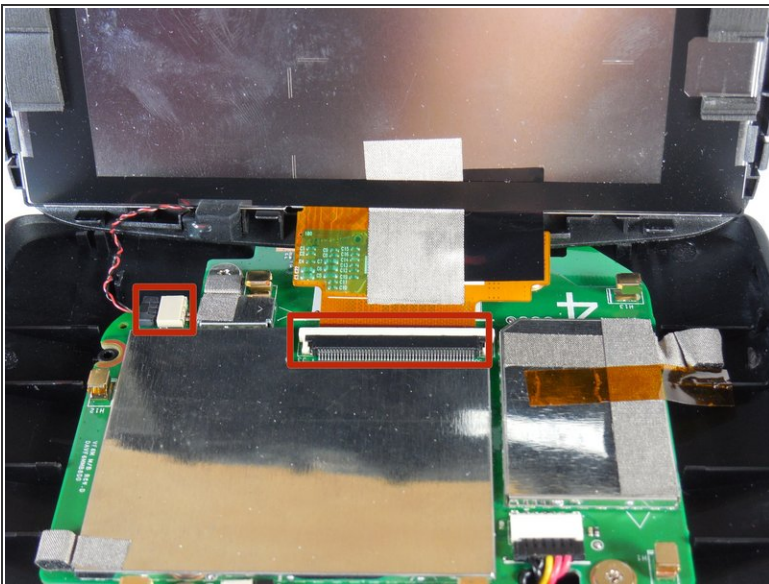
- [64 Bit Driver Kit](#) (1)
- [Phillips #00 Screwdriver](#) (1)
- [iFixit Opening Tools](#) (1)
- [Tweezers](#) (1)

Step 1 — Screen



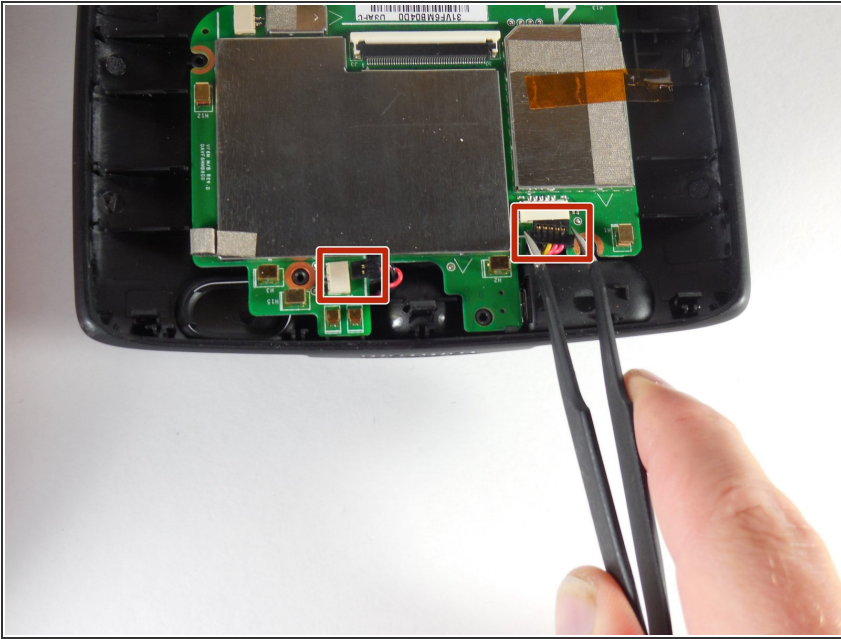
- Slip a small opening tool underneath the screen, gently sliding it around the outside edge.
- ⓘ It may be easier to start at the corners.

Step 2 — Cables



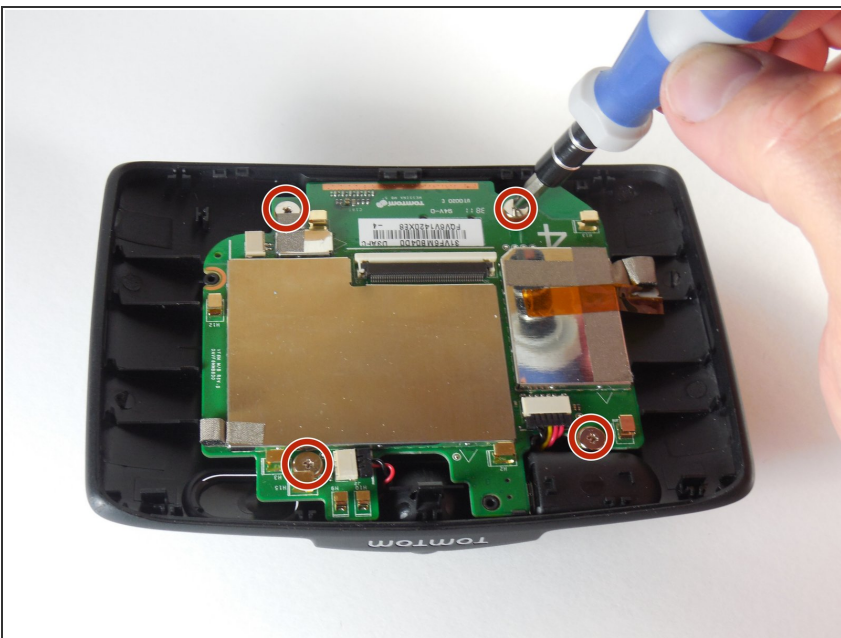
- Carefully remove the reset button cable (located on the left) and the ribbon cable.
- Remove the screen and set it aside.

Step 3 — Logic Board Cables



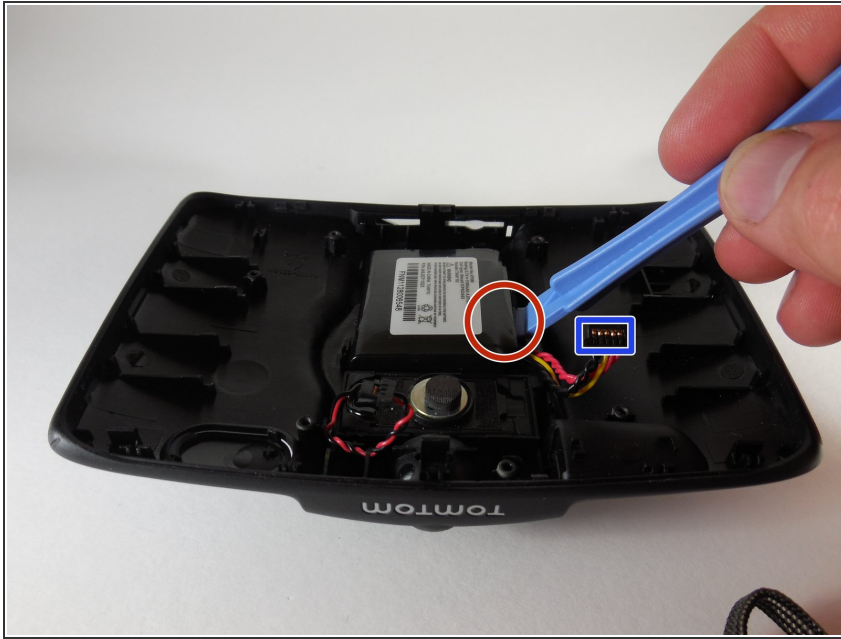
- Remove the logic board cables.
- ⚠ We highly advise that a pair of tweezers are used for this step to ensure no part is damaged.

Step 4 — Screws



- Remove the 3.6mm screws with a Phillips Screwdriver.
- After removing the screws simply lift the logic board from the base.

Step 5 — Battery



- Simply lift the battery up and out of the base.
- Remove the cable.
- Replace the battery.

To reassemble your device, follow these instructions in reverse order.