



# TomTom GO Live 1535M Screen Replacement

In this guide we will disassemble the device to remove the screen so that it can be replaced.

Written By: Mathias Sagide



---

## INTRODUCTION

Please check out the TomTom GO Live 1535M Troubleshooting Guide before taking the device apart to ensure you are following the correct repair procedure.



### TOOLS:

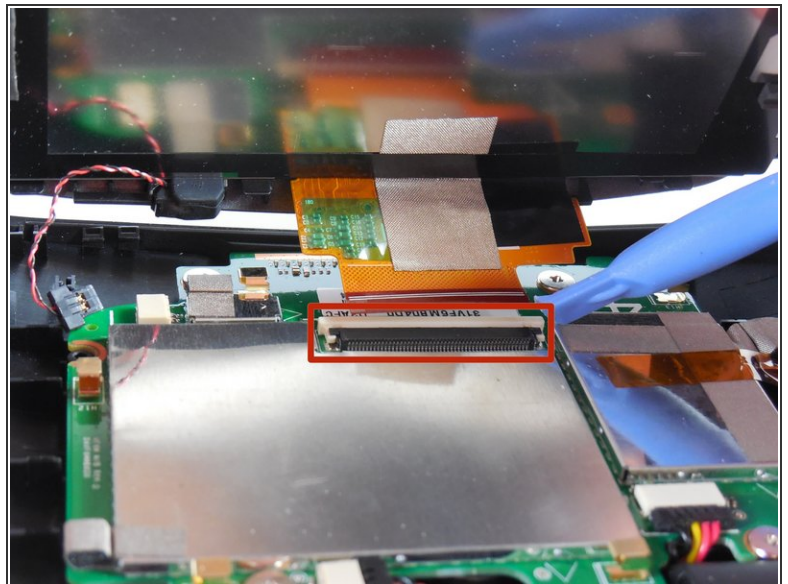
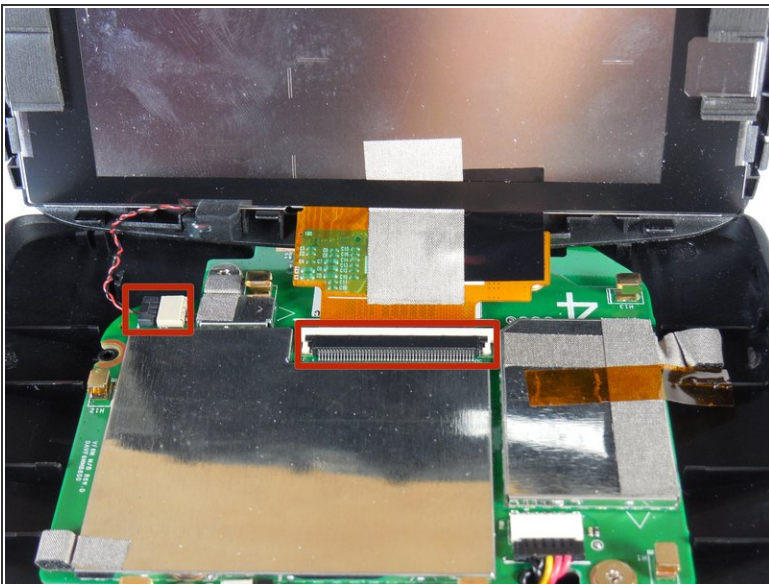
- [iFixit Opening Tools](#) (1)
-

## Step 1 — Screen



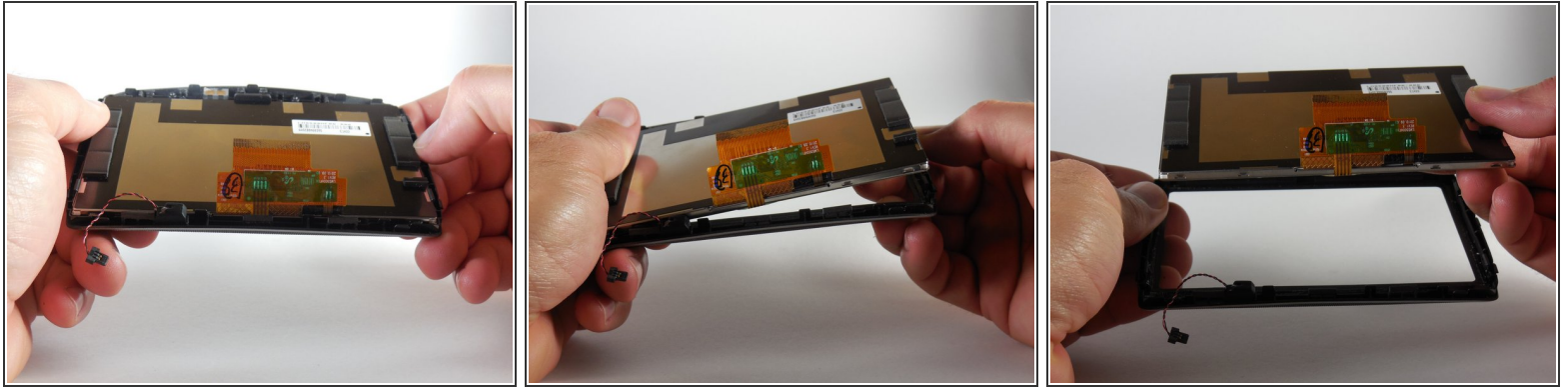
- Slip a small opening tool underneath the screen, gently sliding it around the outside edge.
- ❗ To do this, it may be easier to start at the corners.

## Step 2 — Cables



- Carefully remove the reset button cable (located on the left) and the ribbon cable.

### Step 3 — Removing the Screen



- The screen is simply removed by pushing it up-and-out of the outside rim (denoted by the box).
- ⓘ As you remove the screen, you may hear a 'tearing' sound. Do not panic, as this is just the leftover substance that holds the screen in place. It will re-stick when the screen is placed back.
- If you need to find a replacement screen, please click the link here. [Link text](#)

To reassemble your device, follow these instructions in reverse order.