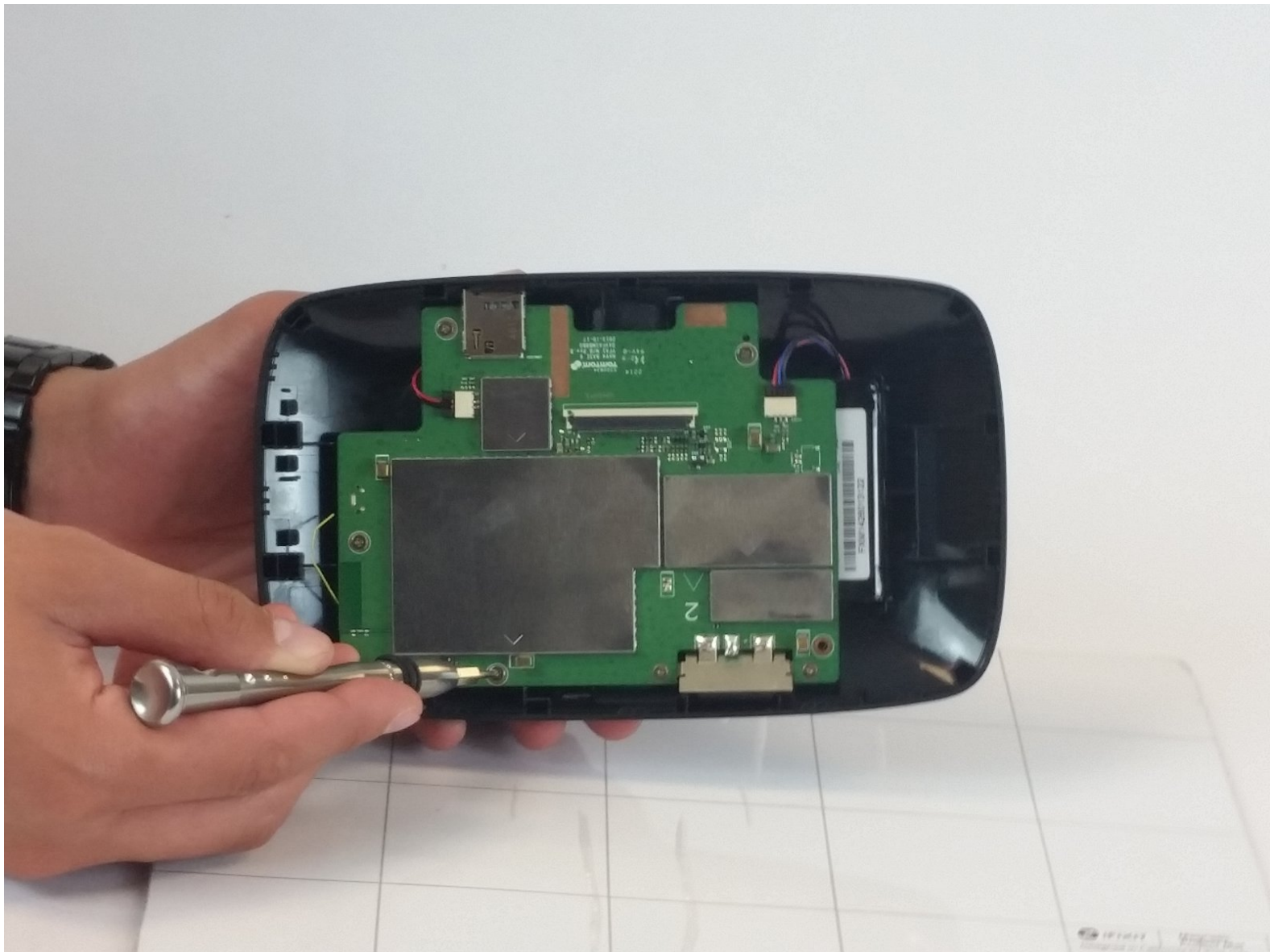




# TomTom Go 60 S Motherboard Replacement

Over time the TomTom Go 60 S motherboard's wires may come apart and make the device stop working. This guide will show you how to replace the motherboard with a new one.

Written By: Ambermarie Dawdy



---

## INTRODUCTION

This guide is to help instruct how to replace the motherboard of the TomTom Go 60 S. The motherboard in the main circuit for the device.



### TOOLS:

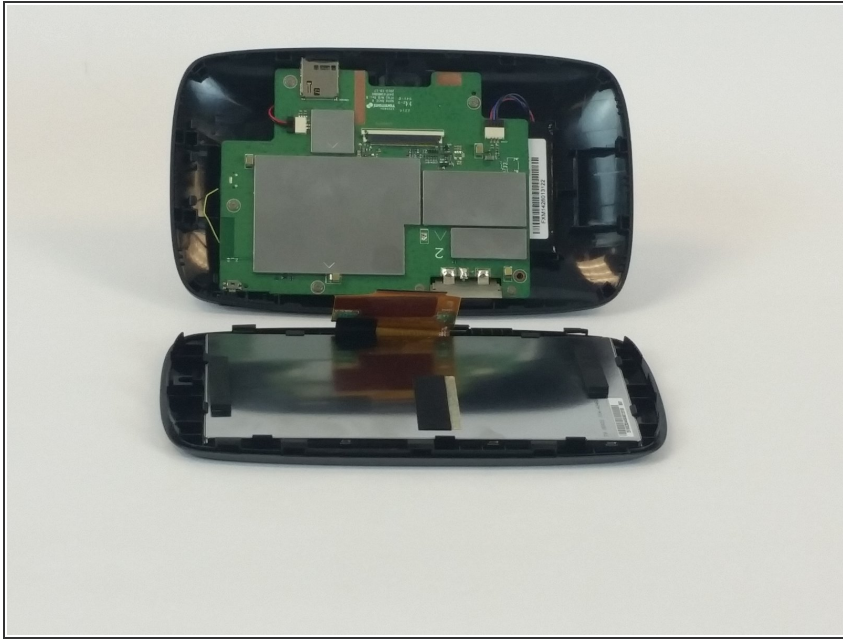
- [iFixit Opening Tools](#) (1)
  - [Phillips #000 Screwdriver](#) (1)
-

## Step 1 — Motherboard



- Use the iFixit opening tool to pry open the TomTom Go 60 S. Start from a corner and drag the tool around the device.

## Step 2



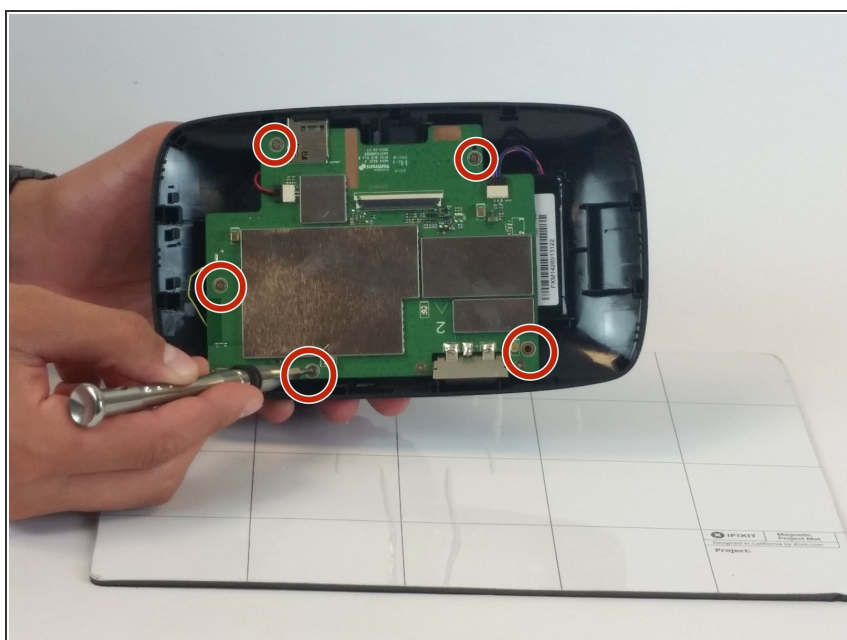
- Carefully pull the back cover apart from the front cover. Be careful not to pull too hard because there are two sets of wires connecting the device

## Step 3



- Once the two covers are separated, use your fingers, to gently disconnect the wires that are connected to the motherboard from the back cover.

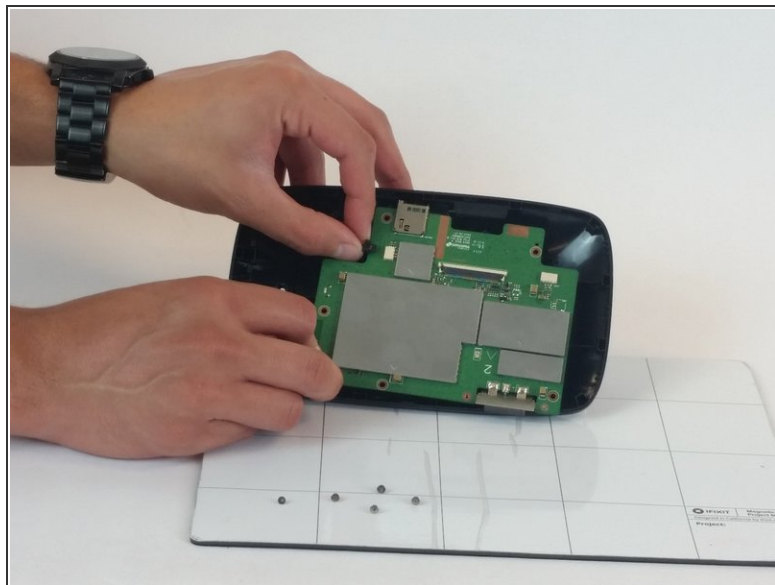
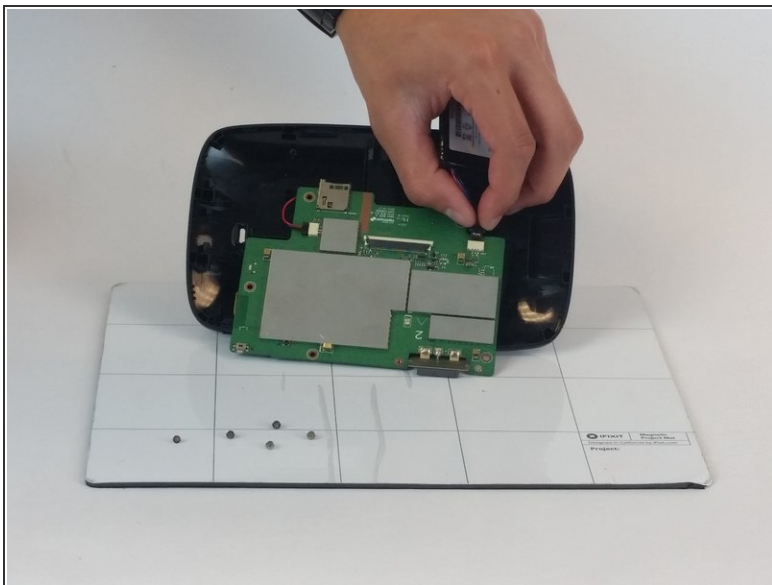
## Step 4



- Next, you must remove the motherboard from the front screen.
- Use a Phillips #000 screwdriver to unscrew the screws.

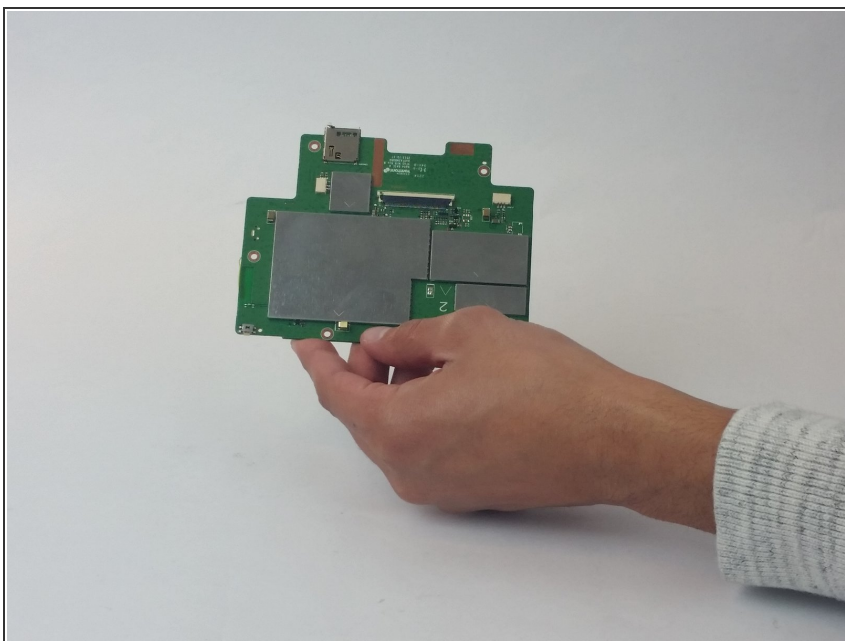


## Step 5



- Separate the motherboard from the front cover, you must disconnect the wires connecting the two.

## Step 6



- The motherboard is now disconnected from the front assembly

To reassemble your device, follow these instructions in reverse order.