



TomTom Go Blue and Me Disassembly

Tomtom Go Blue&Me dissassembly guide. This helps replacing the innards and battery

Written By: hjheins



INTRODUCTION

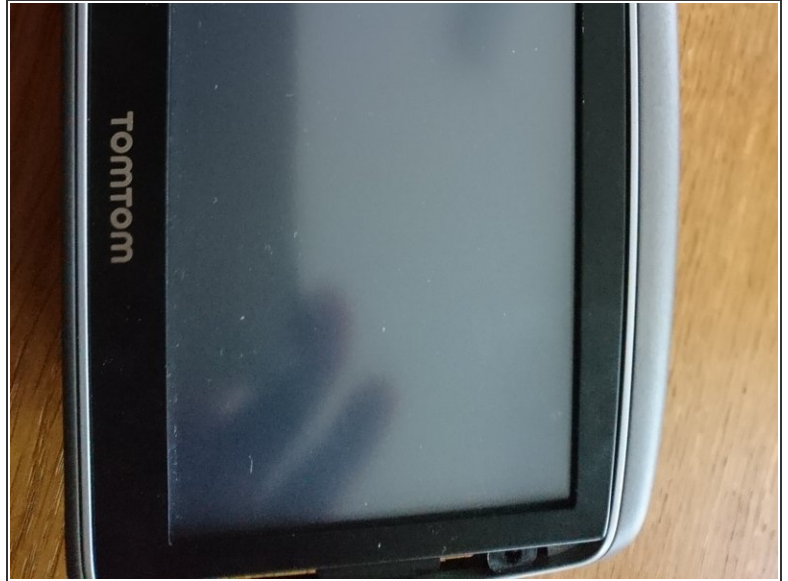
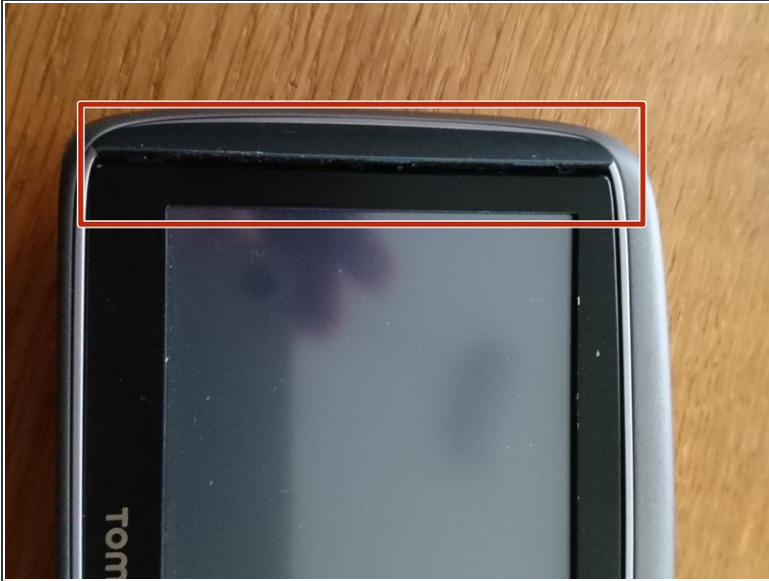
The Tomtom Go Blue&Me is specific to certain models of Fiat, Alfa Romeo, Lancia, Jeep and Chrysler. This model is basically a Tomtom, with a "custom" boot screen showing the brand of the car it is connected to. The pedestal/stand that connects it to the car, is only the power supply. For the data connection, Bluetooth is used.



TOOLS:

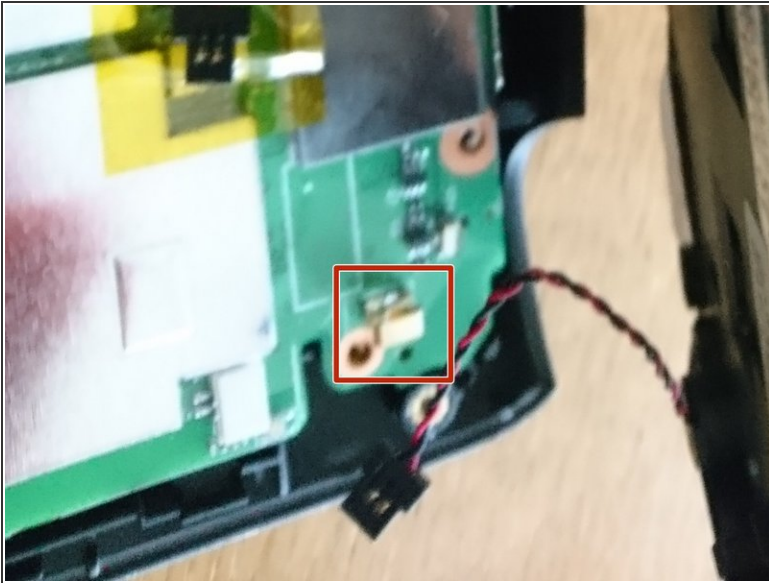
- [Flathead Screwdriver](#) (1)
 - [Spudger](#) (1)
 - [T5 Torx Screwdriver](#) (1)
 - [Blow Dryer](#) (1)
-

Step 1 — Remove the bezels



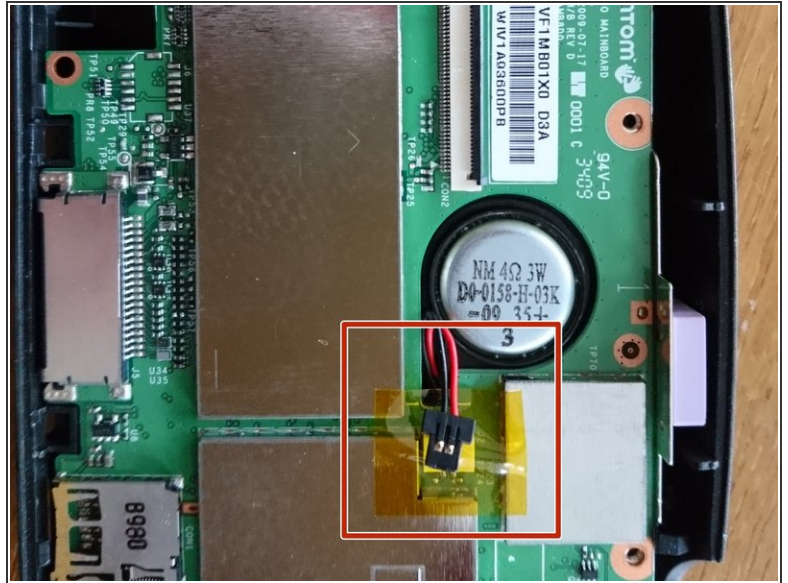
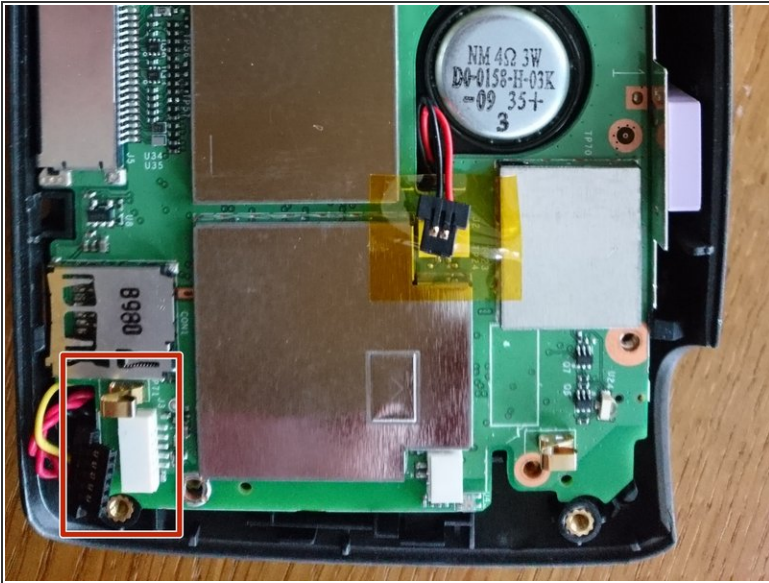
- Use a flat head screwdriver or plastic spatula to remove the bezels from the side of the screen.
- Now the torx screws are visible

Step 2 — Disconnect screen from mainboard



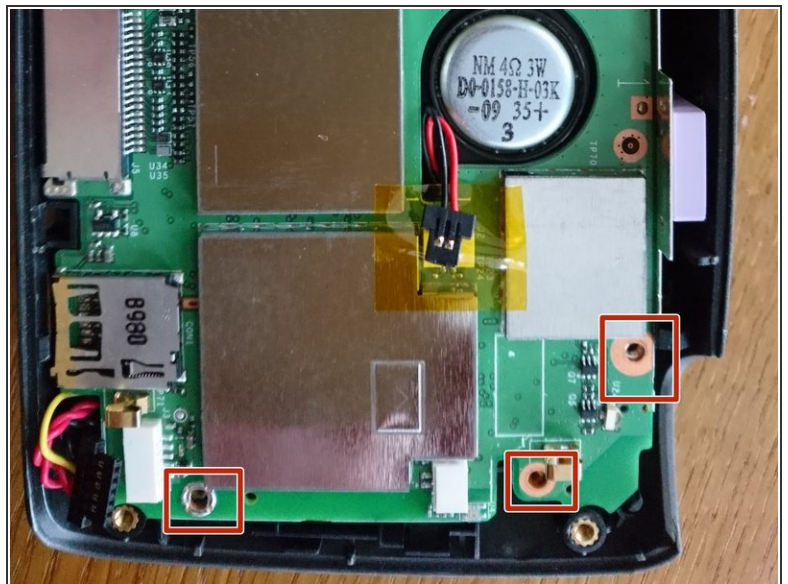
- When the screws are out, the screen is separated from the back of the housing.
- the screen is still connected with a flat cable and a power cable
- The power cable should be pulled first
- The flat cable can be disconnected by lifting up the black part of the connector.

Step 3 — Disconnect battery and loudspeaker



- Next, the main board should be disconnected from the battery
- and from the loud speaker

Step 4 — Battery and loudspeaker



- You can now unscrew the mainboard

Step 5 — access to battery and loudspeaker



- When you now lift out the mainboard, you have access to the battery and loudspeaker.
- The battery is glued in. you need to heat it up to get it out.

Step 6 — On/Off button



- This little piece of plastic was my reason for opening it up. The longer leg was broken. I glued it with superglue and put it back. so far this seems feasible
- Please note the broken bits in the holes at the end of the legs: you can not actually take this out without breaking it! so be ware!

To reassemble your device, follow these instructions in reverse order.