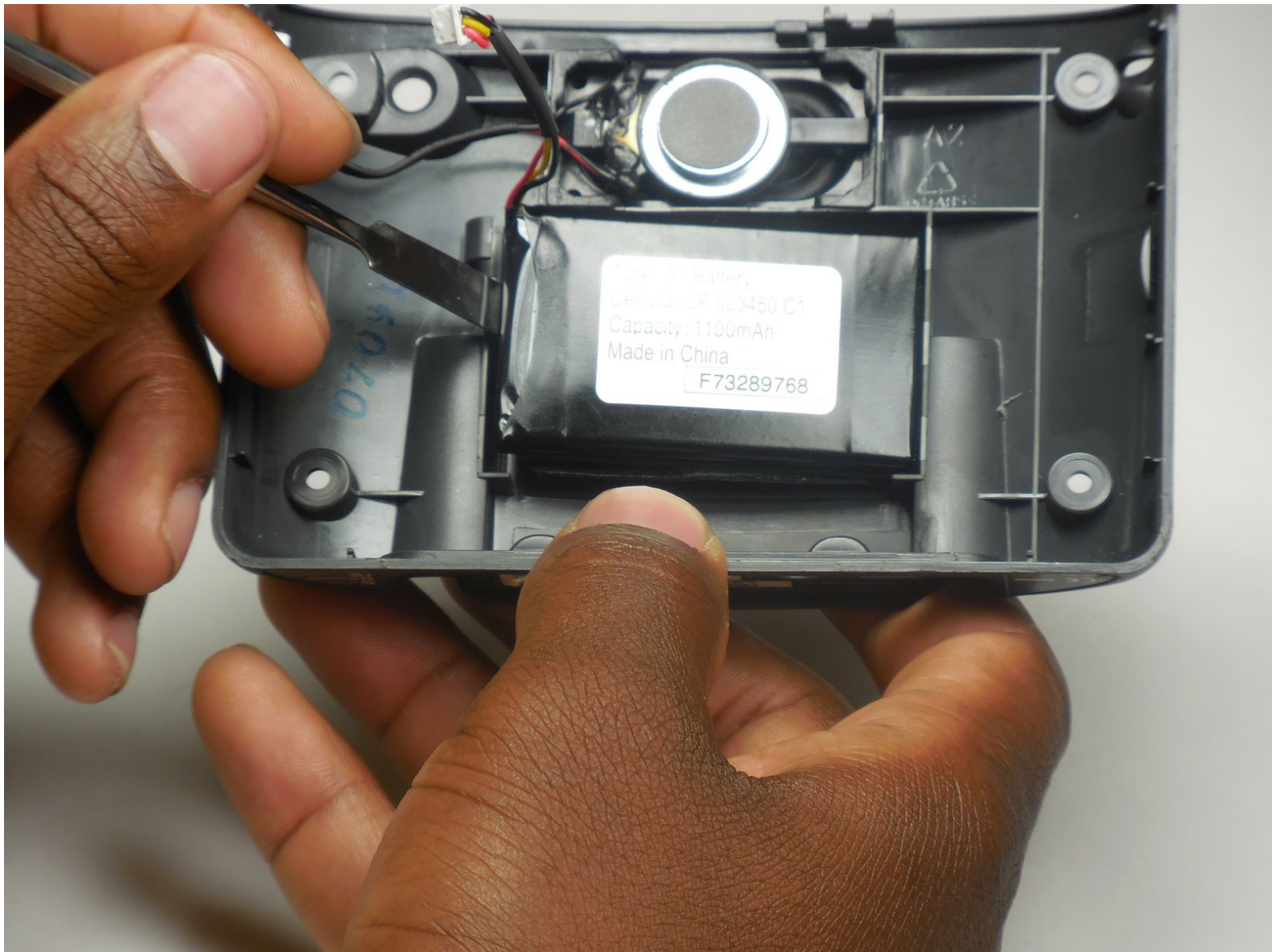




TomTom One XL Battery Replacement

Replace the battery of the TOMTOM XL if the battery is dead or malfunctioning.

Written By: DeVhan



INTRODUCTION

This guide will teach you how to replace the battery of the TOMTOM XL if the battery is dead or malfunctioning.



TOOLS:

- [1.41in x 12yd double sided tape](#) (1)
 - [iFixit Tech Knife](#) (1)
-

Step 1 — Back Panel



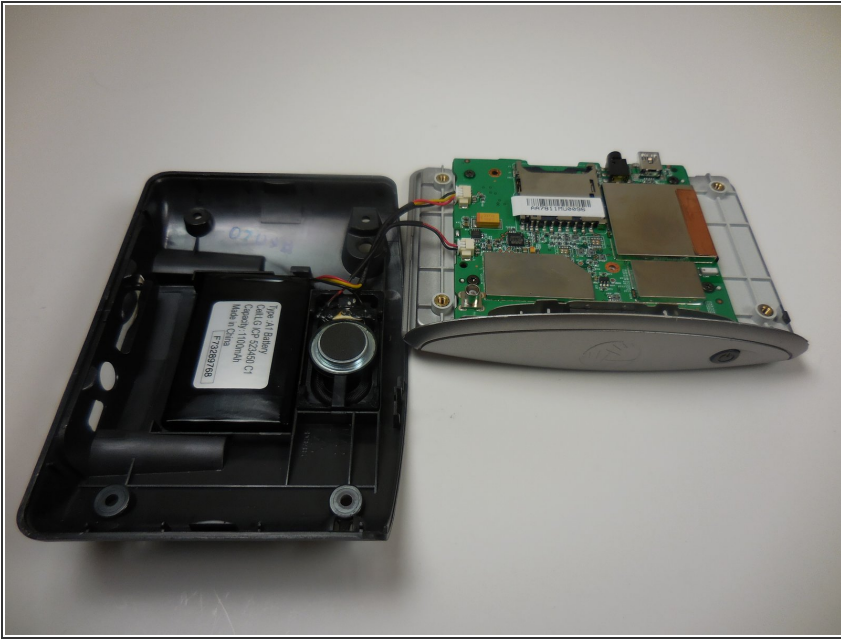
- Remove the 4 .4mm screws on the back of the device.

Step 2



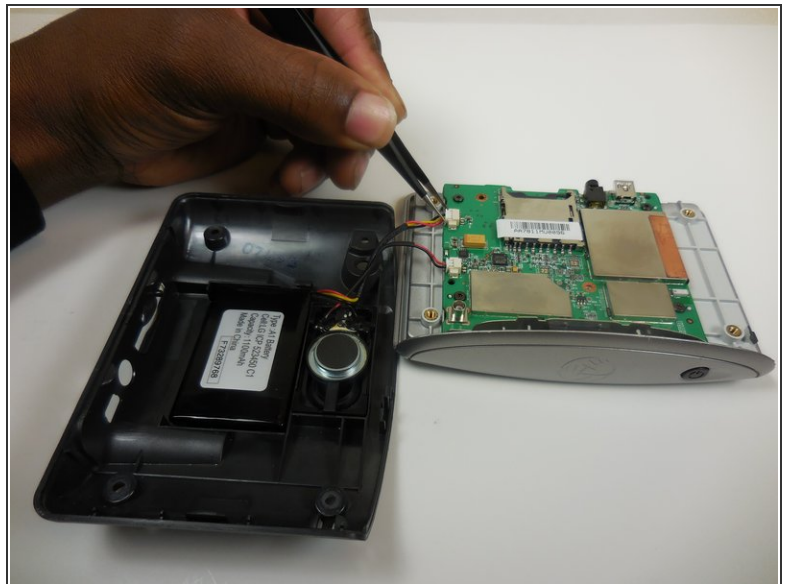
- Using the palate knife tool, pry the back from the LCD screen. Apply a moderate pressure to separate them.
- ⓘ You can rotate TOMTOM XL to make prying back off easier.
- ⚠ Be careful not to injure the two wires connecting the pieces.

Step 3



- After prying both halves apart, they will be connected by two wires.
- Carefully set the two halves next to each other making sure not to stress or damage the wires.

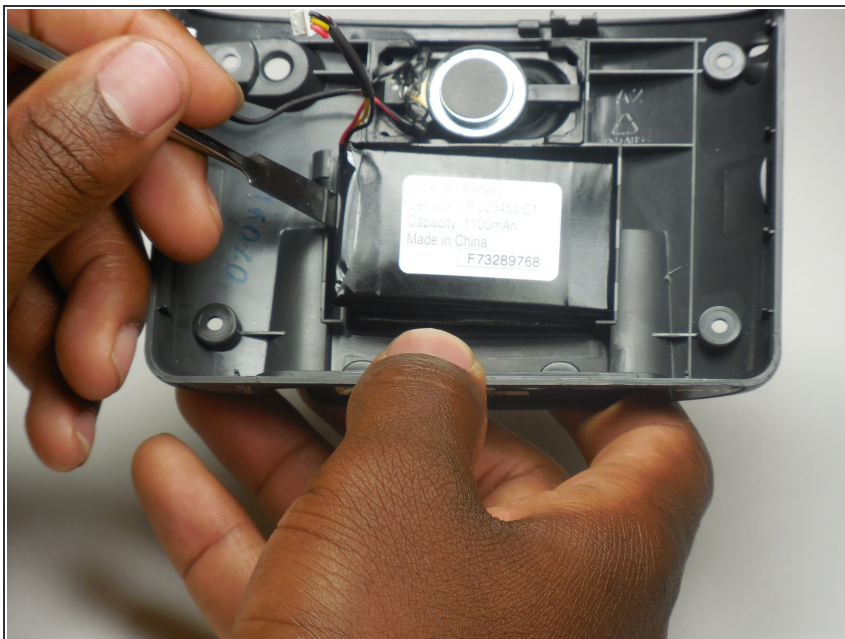
Step 4



- Using the tweezers separate the wires connecting the battery and speaker to the mother board.

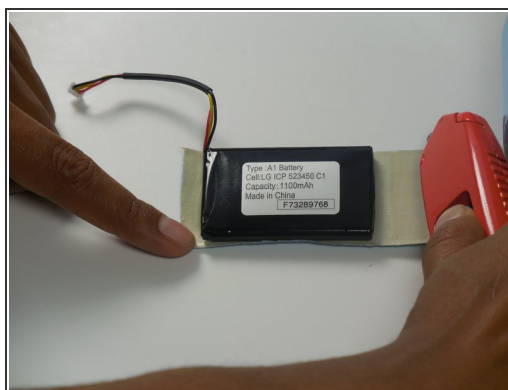
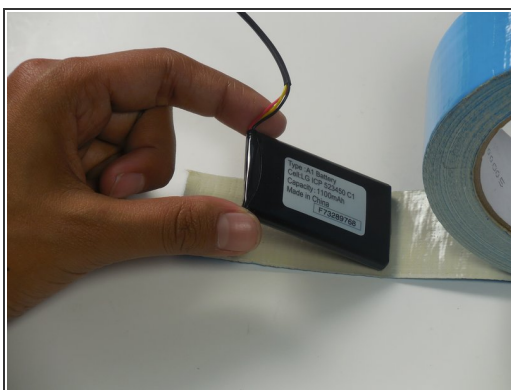
⚠ Be gentle while pulling the wires out, the plugs are easily injured.

Step 5 — Battery



- Using metal palate knife pry the battery from the back panel.

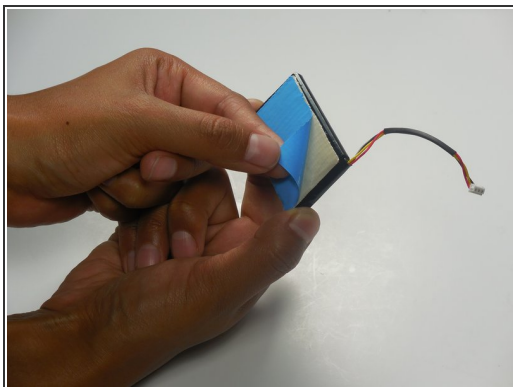
Step 6



- Place the backside of the battery on the sticky side of the double sided tape.
- Using the tech knife, trim the extra tape to the size of the battery.

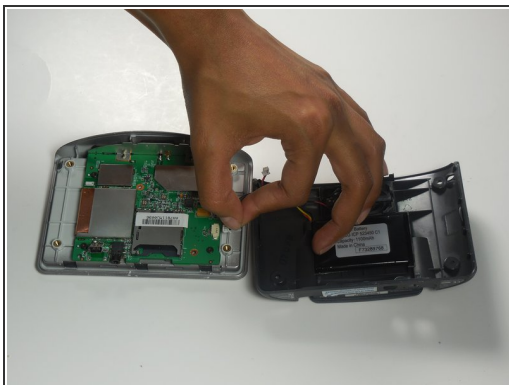
⚠ The tech knife is sharp, be careful when cutting the tape.

Step 7



- Remove the back of the double sided tap.
- Place the new battery back inside the back panel of TOMTOM XL.
- ⓘ Make sure the wire from the battery is going in the correct direction.

Step 8



- Reconnect the battery ribbon cable to its port.

To reassemble your device, follow these instructions in reverse order.