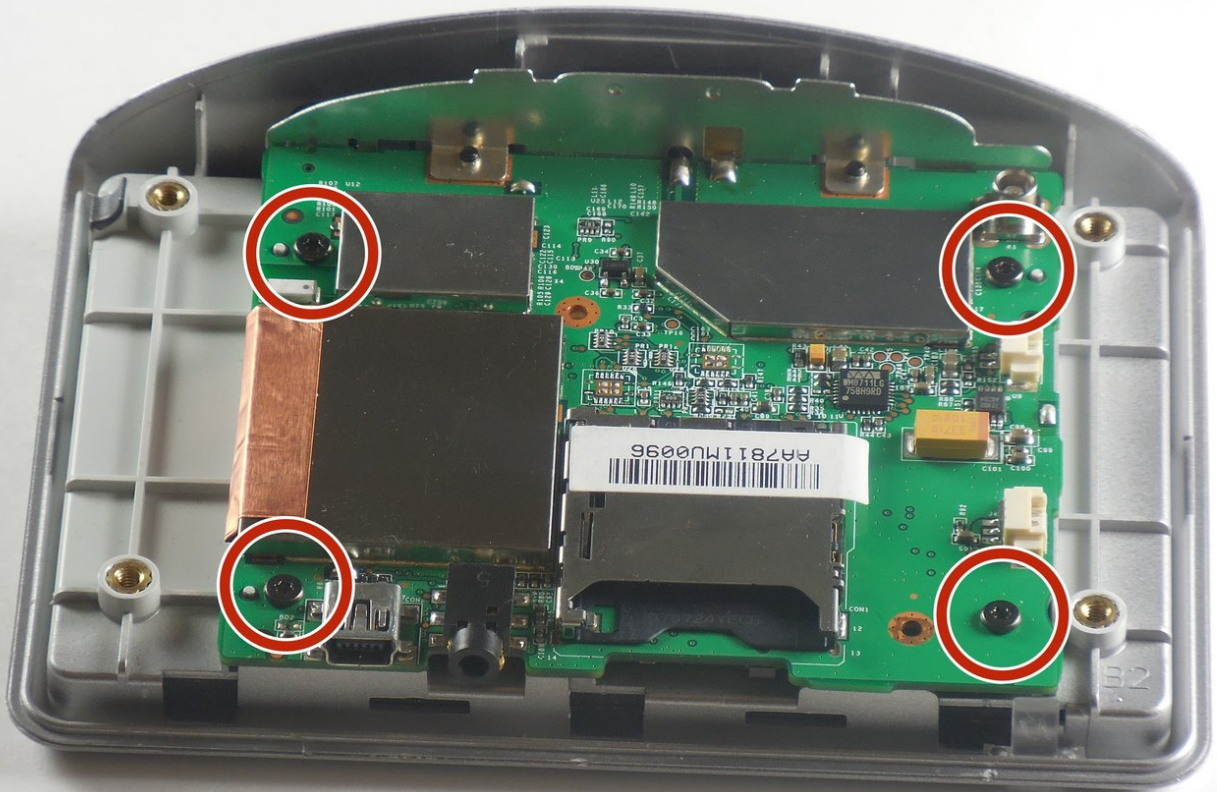




# TomTom One XL Power Button Replacement

In the event that the power button becomes obstructed or damaged it may prevent the functionality of the device. This guide will run you through the disassembling process so any obstruction may be removed or the button may be replaced.

Written By: Jesse



## INTRODUCTION

This guide will teach you how to disassemble your TomTom One XL and expose the power button for cleaning or repair.



### TOOLS:

- [T6 Torx Screwdriver](#) (1)



### PARTS:

- [Replacement Power Button for TomTom One XL](#) (1)

## Step 1 — Back Panel



- Remove the 4 .4mm screws on the back of the device.

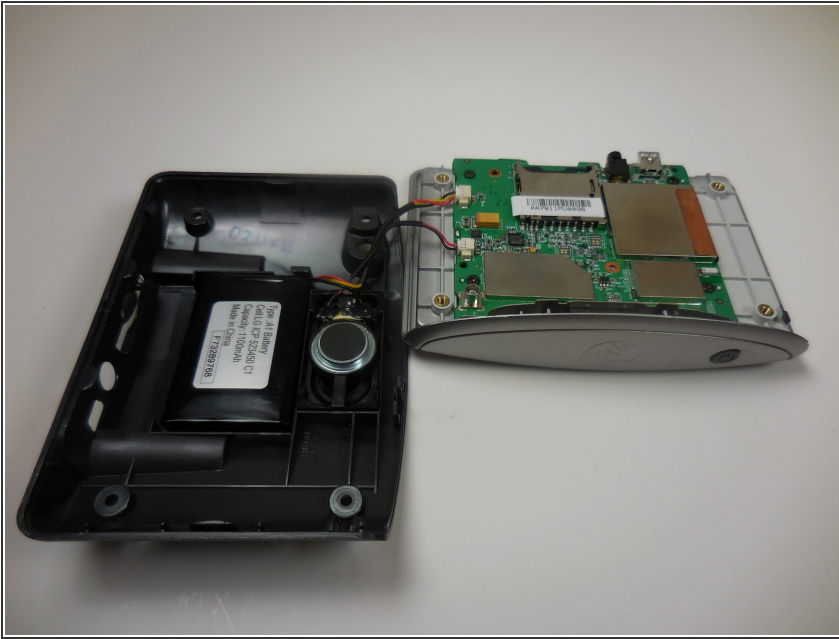
## Step 2



- Using the palate knife tool, pry the back from the LCD screen. Apply a moderate pressure to separate them.
- ⓘ You can rotate TOMTOM XL to make prying back off easier.
- ⚠ Be careful not to injure the two wires connecting the pieces.

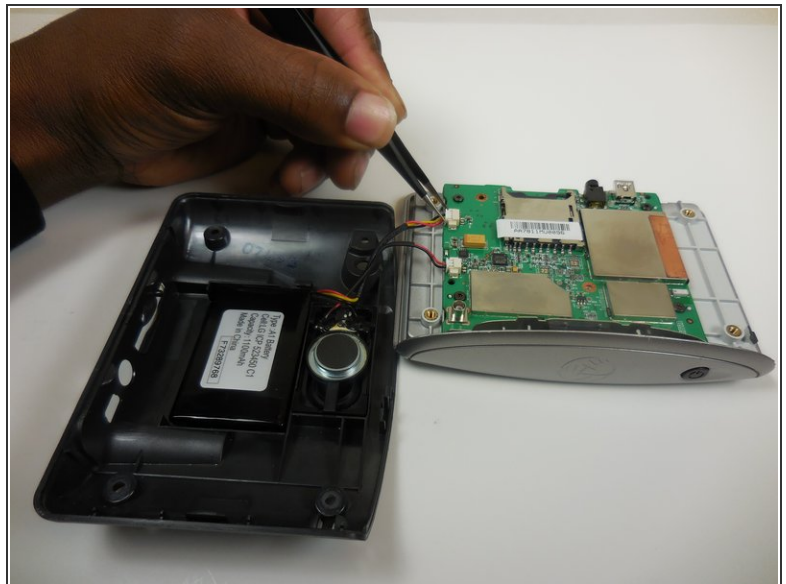


## Step 3



- After prying both halves apart, they will be connected by two wires.
- Carefully set the two halves next to each other making sure not to stress or damage the wires.

## Step 4



- Using the tweezers separate the wires connecting the battery and speaker to the mother board.

⚠ Be gentle while pulling the wires out, the plugs are easily injured.

## Step 5 — Power Button



- Using a Torx 6 screwdriver, remove the 4 .5mm screws connecting the motherboard to the screen assembly.

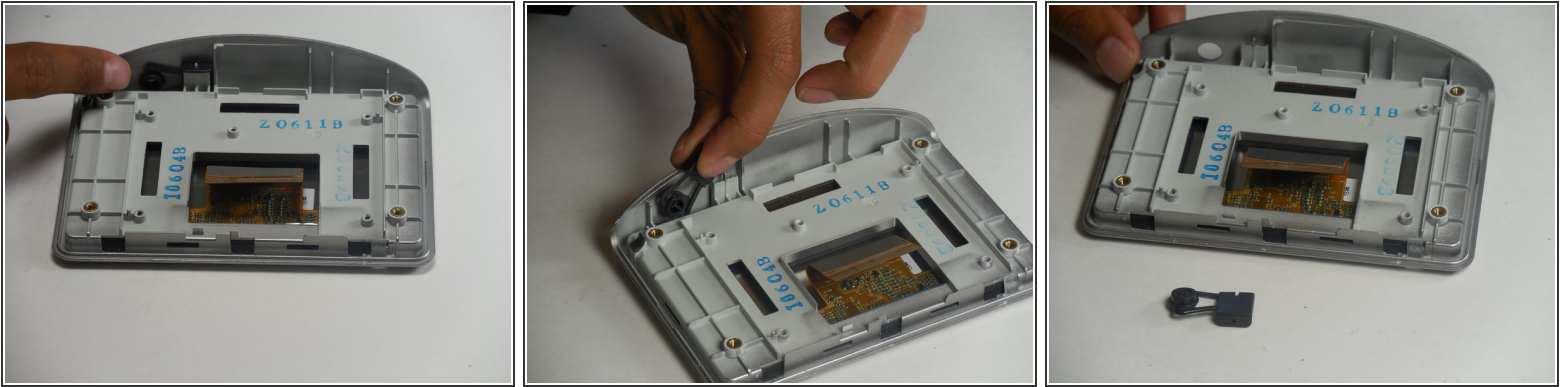
⚠ The motherboard is connected to the screen assembly via a ribbon wire. After removing the screws, be careful not to damage the wire or the port.

## Step 6



- Detach the ribbon wire from it's port on the back of the motherboard.

## Step 7



- Now the power button is exposed and any obstructions can be easily removed.

**i** If you want to replace the button it can easily be popped out using your hands.

To reassemble your device, follow these instructions in reverse order.