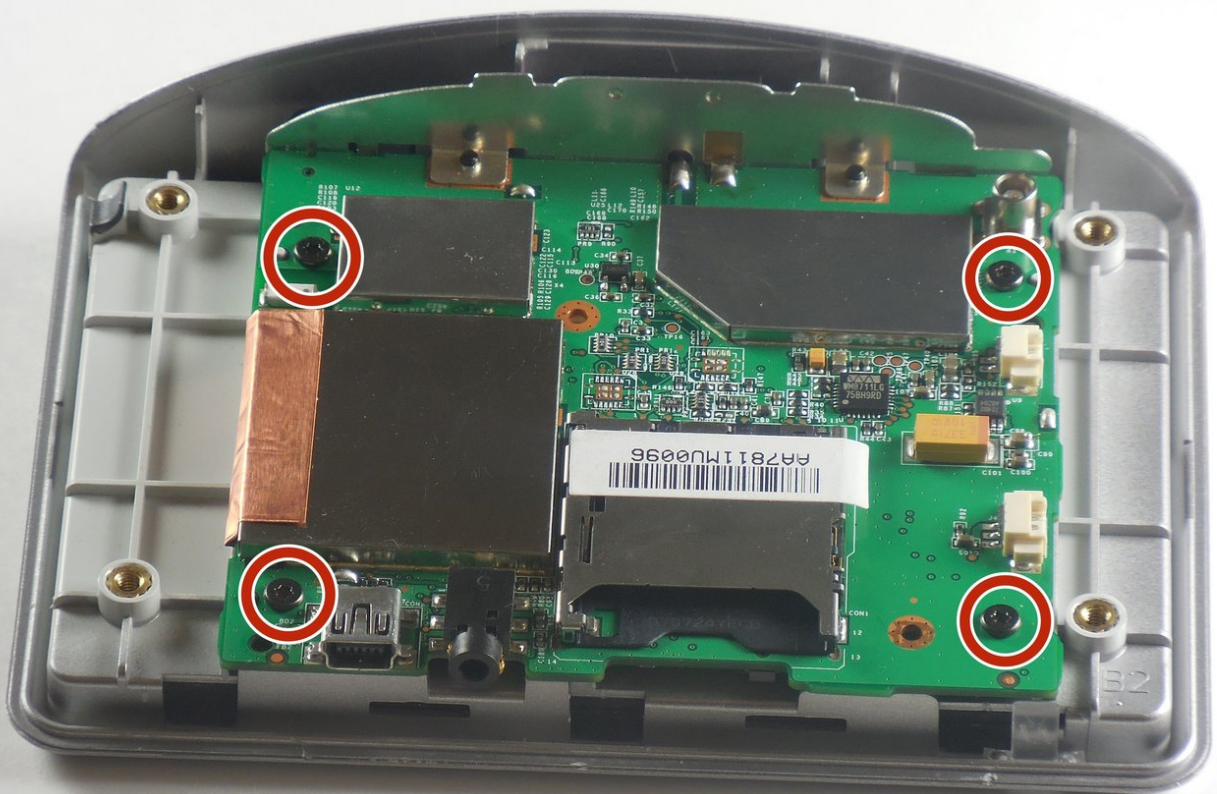




# TomTom One XL Screen Replacement

This guide will focus on the steps you take once the device is disassembled to remove and potentially replace the screen to your Tom Tom ONE XL.

Written By: DeVhan



---

## INTRODUCTION

Before beginning this guide you should have completed guides on removing the back cover and separating the circuit board from the front cover.

---

### **TOOLS:**

- [Palate-knife](#) (1)
  - [T6 Torx Screwdriver](#) (1)
-

## Step 1 — Back Panel



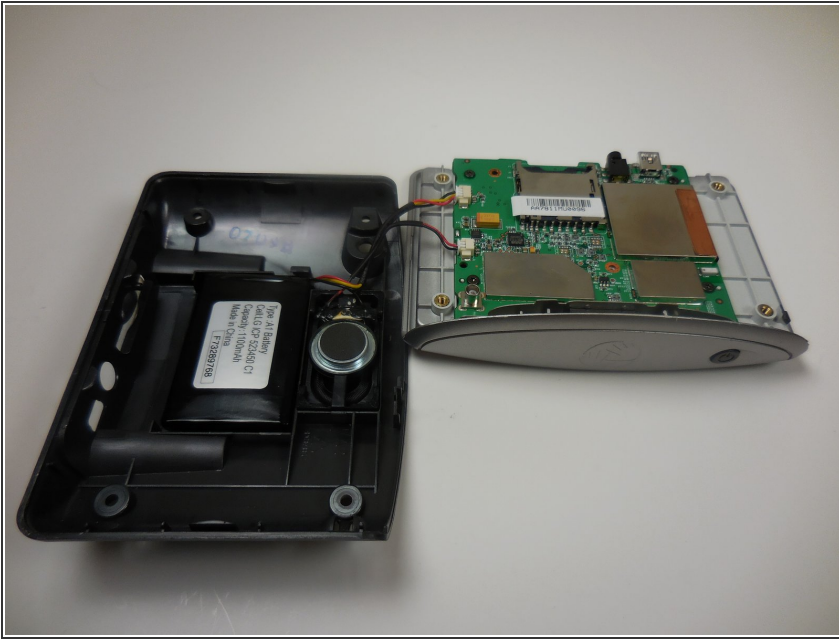
- Remove the 4 .4mm screws on the back of the device.

## Step 2



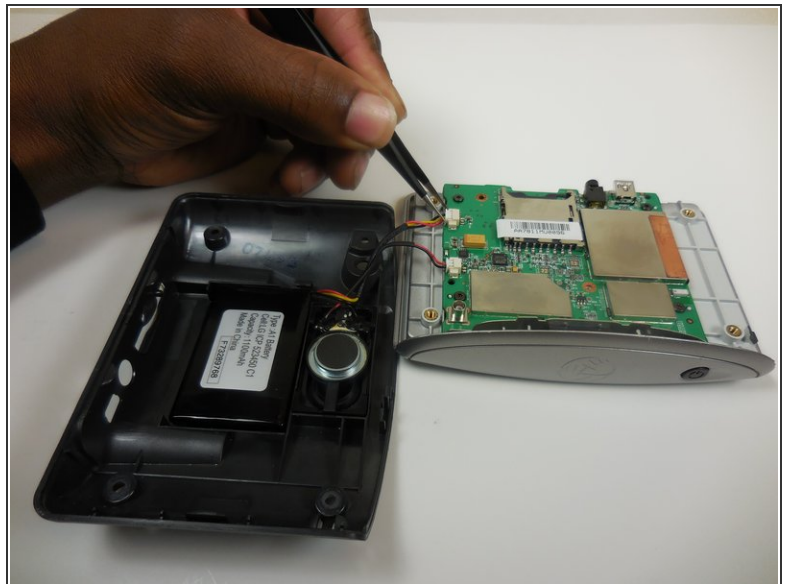
- Using the palate knife tool, pry the back from the LCD screen. Apply a moderate pressure to separate them.
- ⓘ You can rotate TOMTOM XL to make prying back off easier.
- ⚠ Be careful not to injure the two wires connecting the pieces.

## Step 3



- After prying both halves apart, they will be connected by two wires.
- Carefully set the two halves next to each other making sure not to stress or damage the wires.

## Step 4



- Using the tweezers separate the wires connecting the battery and speaker to the mother board.

⚠ Be gentle while pulling the wires out, the plugs are easily injured.



## Step 5 — Screen



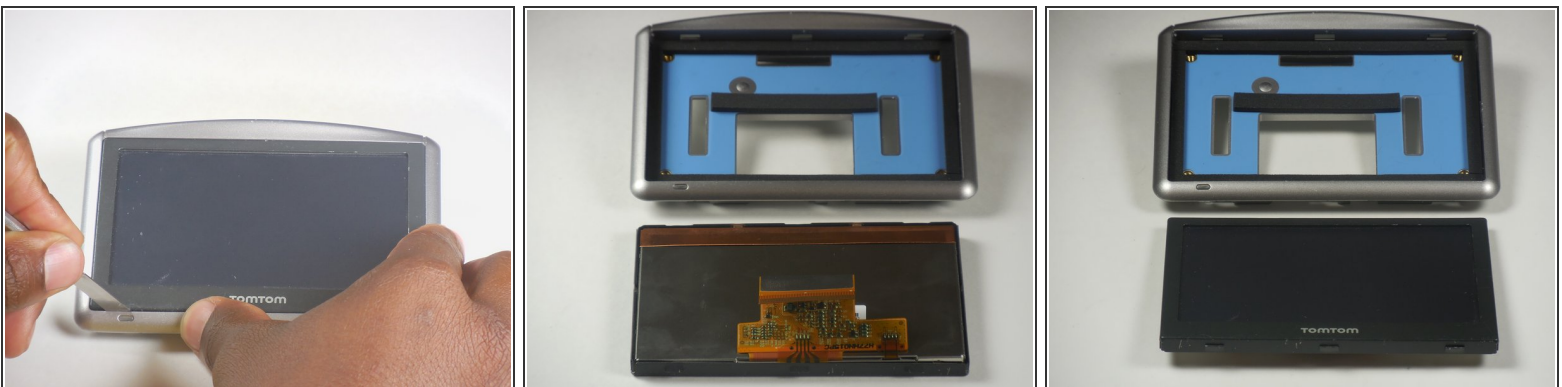
- Locate the 4 .4mm screws connecting the circuit board to the front panel.
- Use the T6 Torx screwdriver and remove the four screws.

## Step 6



- Locate the ribbon cable connecting the front panel to the circuit board.
  - Locate the white tab locking the ribbon in place.
  - Using precision tweezers push the left and right side of the tab forward.
  - Gently pull the ribbon to disconnect the circuit board from the front panel.
- i** If gently pulling on the ribbon doesn't release it then the tab hasn't been pushed far enough forward.

## Step 7



- Use the palate knife to pry the screen away from the front panel.
  - Pry between the light gray board and the black boarder of the TOMTOM XL screen.
- i** Use moderate pressure when prying, slide the palate knife back and forth, and eventually the screen should pop out.

To reassemble your device, follow these instructions in reverse order.