



# TomTom Runner Back Panel Replacement Guide

This guide helps to walk you through removing and replacing the back panel for your TomTom Runner Watch.

Written By: Madison Metzиг



---

## INTRODUCTION

This guide shows how to remove and replace the back panel of your watch. It will show up in most of the other guides as well. See the other specific guides for more information on the part of the watch you are wanting to replace.



### TOOLS:

- [Heavy-Duty Spudger](#) (1)
  - [T4 Torx Screwdriver](#) (1)
  - [T5 Torx Screwdriver](#) (1)
-

## Step 1 — Wristband



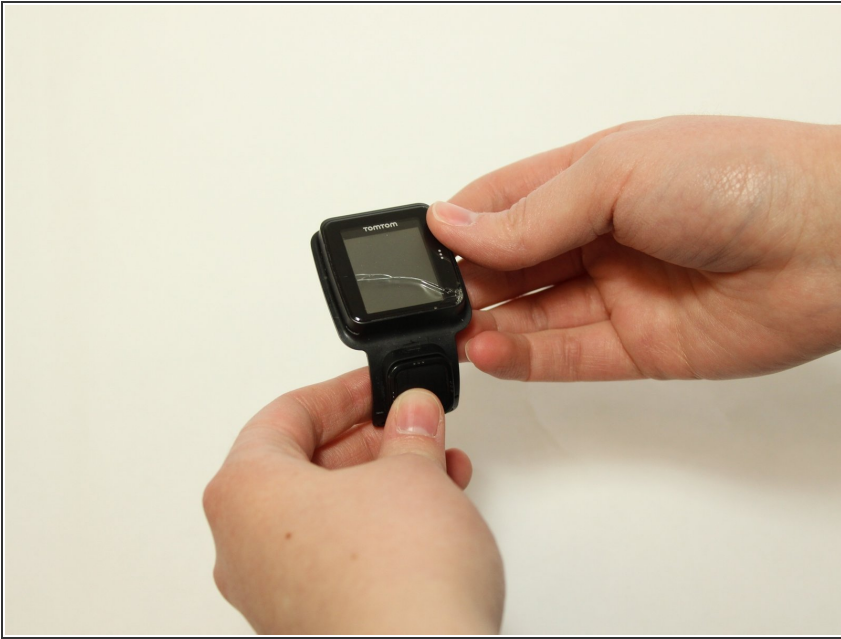
- First, lift the bottom part of the band to start removing the wristband from the button area of the watch.

## Step 2



- Continue to lift up on the band until the screen of the watch becomes loose from the band.
  - ⓘ You may need to apply a small amount of force downward on the face of the screen.
- Continue to pull up on the wristband until it is completely off the watch.

## Step 3 — Back Panel



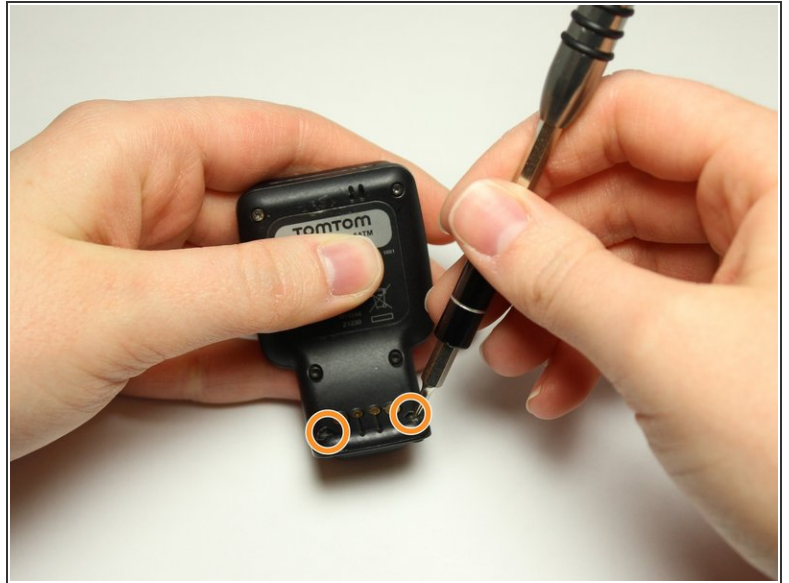
- Grab the watch once it is separated from the wristband.

## Step 4



- Flip over the watch and remove the four 3.0 mm Torx head screws with a T4 Torx head screwdriver.

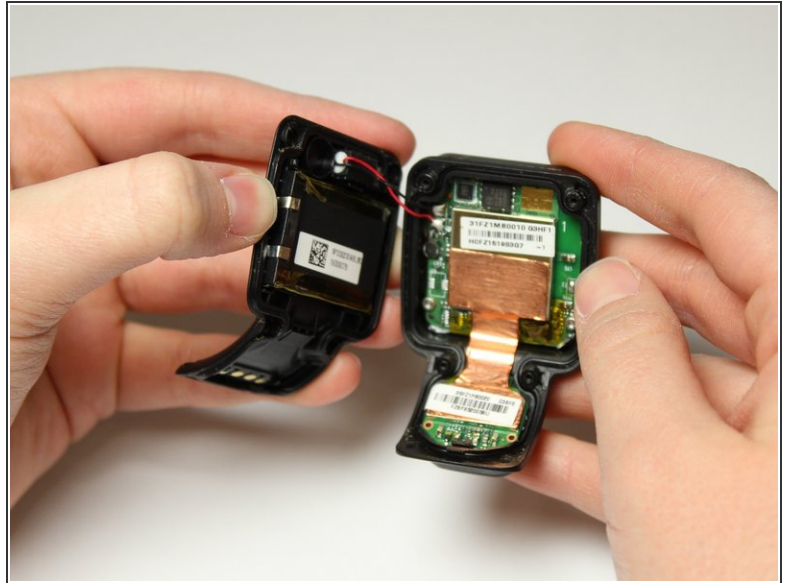
## Step 5




- Remove the two 3.0 mm Torx screws from the front. Use a T4 Torx screwdriver to remove the screws.
- The two 3.0 mm Torx screws are painted blue at the end. These screws have screw holders around them that will also need to be removed.
- Unscrew the screws from the front of the watch casing and the screw holders fall out from the back of the watch casing.



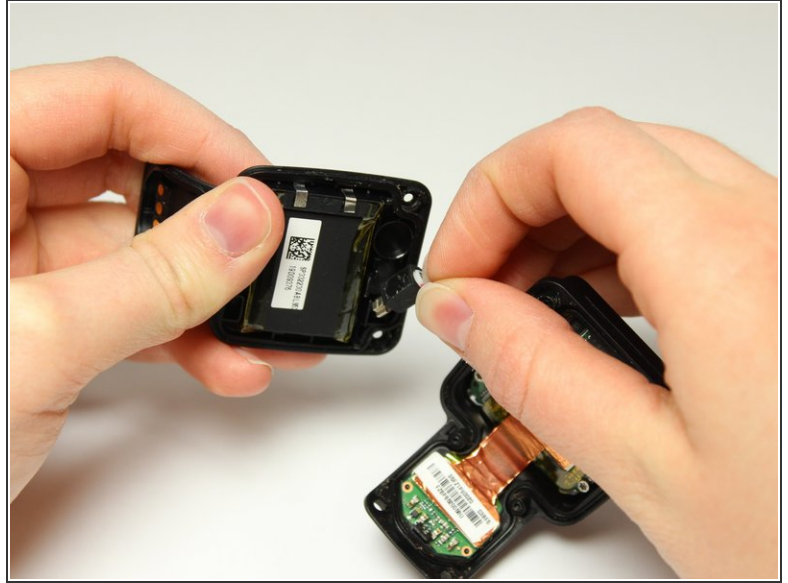
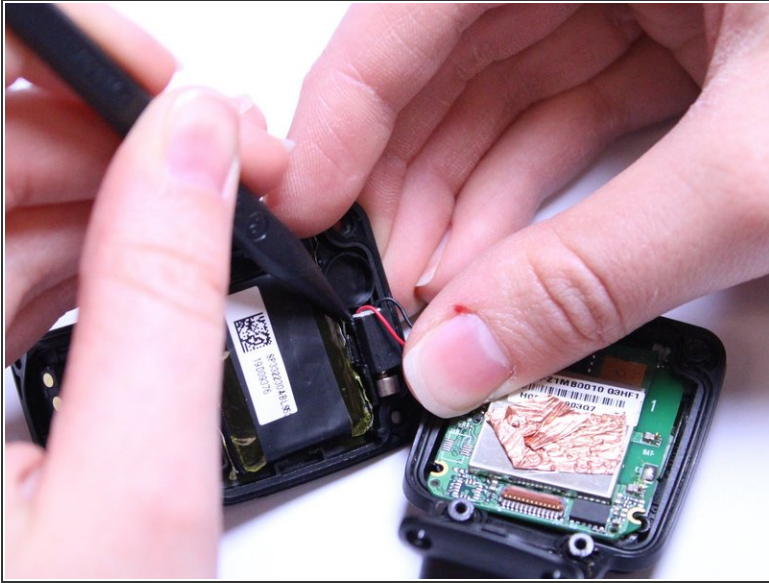
## Step 6



- Gently pull the back panel away from the front panel.

 Do not to pull too fast or too hard. There are red and black wires connected to the vibrator component that should not be ripped.

## Step 7



- Gently wiggle the black box vibrator component away from the back panel with your fingers or a Spudger tool.
  - ⚠ Be gentle with the red and black wires. You do not want them to rip or pop out.
- ⓘ The vibrator component is the small black box with the silver metal part at end. The black box is glued down, so it will take a little force to free it and it will be sticky.

This step is complete once the back and front panels are separated from each other. To reassemble your device, follow these instructions in reverse order.